

190

EAST 98TH STREET

BETWEEN WINTHROP ST & CLARKSON AVE
BROOKSVILLE | BROOKLYN



190

EAST 98TH STREET

BETWEEN WINTHROP ST & CLARKSON AVE
BROWNSVILLE | BROOKLYN


SIZE: 6,520 SF Ground Floor
+ Basement

FRONTAGE: 50'

CEILING HEIGHT: 12'

POSSESSION: January 1, 2025

ASKING RENT: Upon Request

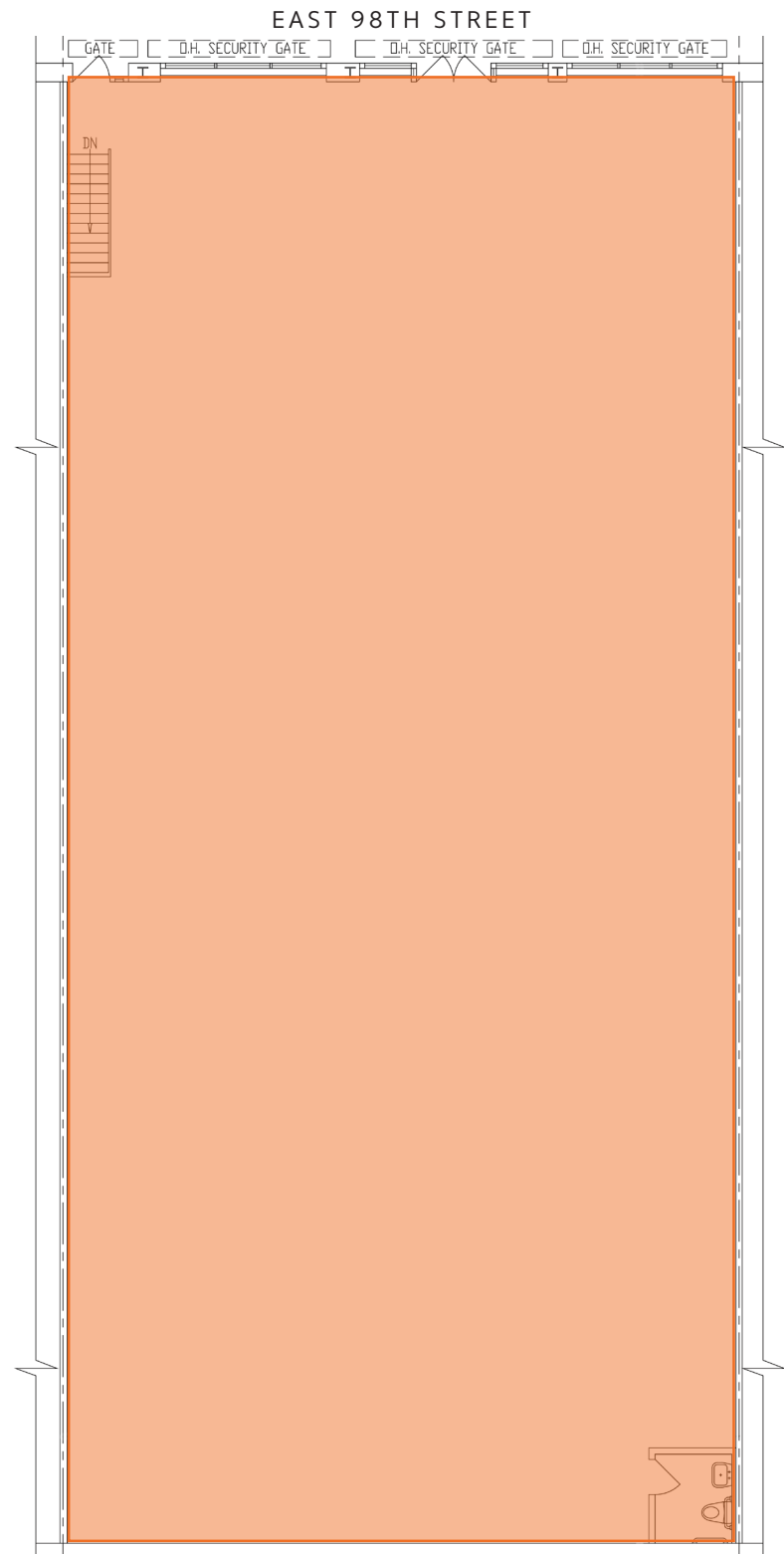
TRANSPORTATION: 

HIGHLIGHTS:

- High foot traffic area
- Dense residential neighborhood
- Neighboring tenants include: *Dollar Tree, Santander, C-Town, WOODStack, Dollar General, Golden Krust, Family Dollar, Asceng, Total Wireless, Blink, Popeye's, Papa John's, Pioneer Supermarket*



All information supplied in this marketing presentation and/or flyer is from sources deemed reliable and is furnished subject to errors, omissions, modifications, removal of listings from sale/lease and to any listing condition. Any square footage, dimensions, floor plans and/or technical data set forth are approximations and are subject to further elaboration/confirmation.



190

EAST 98TH STREET

RETAIL SITE PLAN:



190
E 98TH STREET

BETWEEN WINTHROP ST & CLARKSON AVE
BROWNSVILLE | BROOKLYN

FOR MORE INFORMATION,
PLEASE CONTACT:

JESSICA SAADIA

347.977.0185 | JSaadia@ksrny.com

FREDDY SOUID

917.968.0329 | FSouid@ksrny.com

JACK KHASKI

917.355.0559 | JackK@ksrny.com

ALBERT MANOPLA

212.380.8369 | AManopla@ksrny.com

