



Office Building For Sale

**2136 THE ALAMEDA
SAN JOSE, CA 95126**

PROPERTY HIGHLIGHTS

- Perfect owner/user office building with great curb appeal & character located on tree lined The Alameda, a busy commercial thoroughfare and access route to the Downtown San Jose.
- Old world charm inside and outside with beautiful mahogany wood trim and oak hardwood floors throughout.
- + 3,400 SF freestanding office offering flexibility for multi or single tenant occupancy.
- Easy access to Hwy. 17/280 and 101 - minutes to San Jose International Airport
- Nearby retail amenities – close to Restaurants, Valley Fair & Santana Row
- Blocks from the Santa Clara University campus
- On-site + street parking available
- Lot Size : ± 7,145 SF (.16 acres)
- Zoning: CO
- Sale price: \$2,399,000
- Call to schedule an appointment to tour

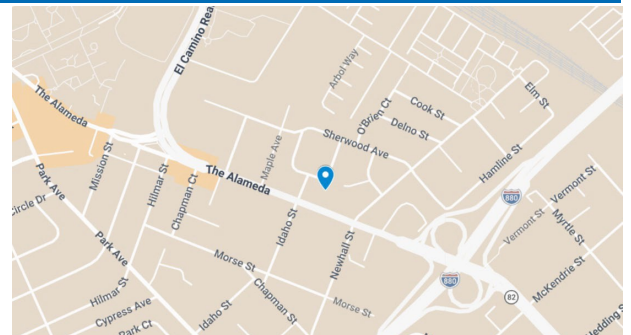
For more information, please contact:

Nancy Morse CCIM, MCR, SIOR

Senior Managing Director
CA RE License #00983283
t 408-987-4175
nancy.morse@nmrk.com

Patty Steele

Senior Managing Director
CA RE License #00839635
t 408-982-8463
patty.steele@nmrk.com



NEWMARK

Space Photos



For more information, please contact:

Nancy Morse CCIM, MCR, SIOR

Senior Managing Director
CA RE License #00983283
t 408-987-4175
nancy.morse@nmrk.com

Patty Steele

Senior Managing Director
CA RE License #00839635
t 408-982-8463
patty.steele@nmrk.com

Space Photos



For more information, please contact:

Nancy Morse CCIM, MCR, SIOR

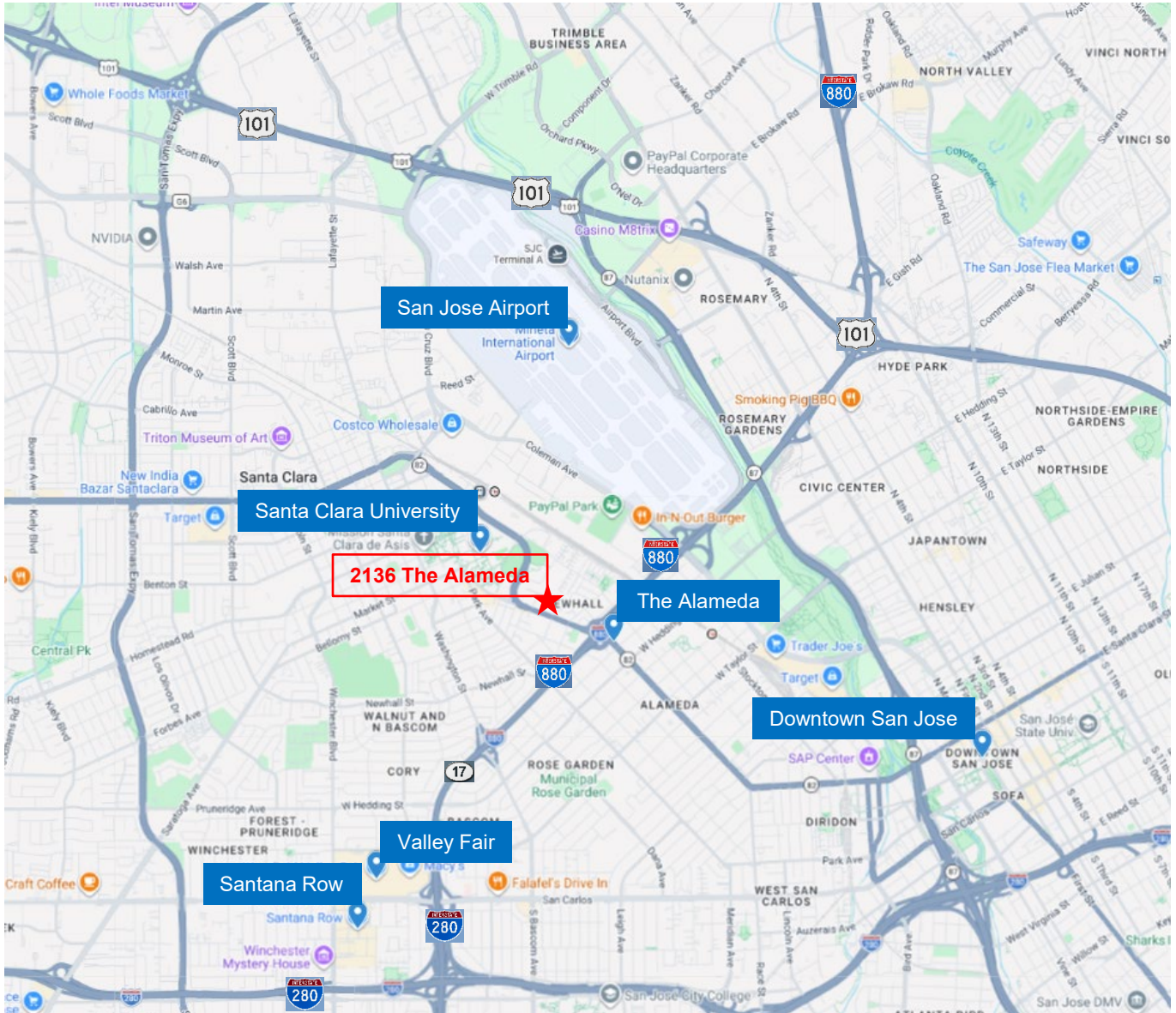
Senior Managing Director
CA RE License #00983283
t 408-987-4175
nancy.morse@nmrk.com

Patty Steele

Senior Managing Director
CA RE License #00839635
t 408-982-8463
patty.steele@nmrk.com

NEWMARK

Amenities Map



For more information, please contact:

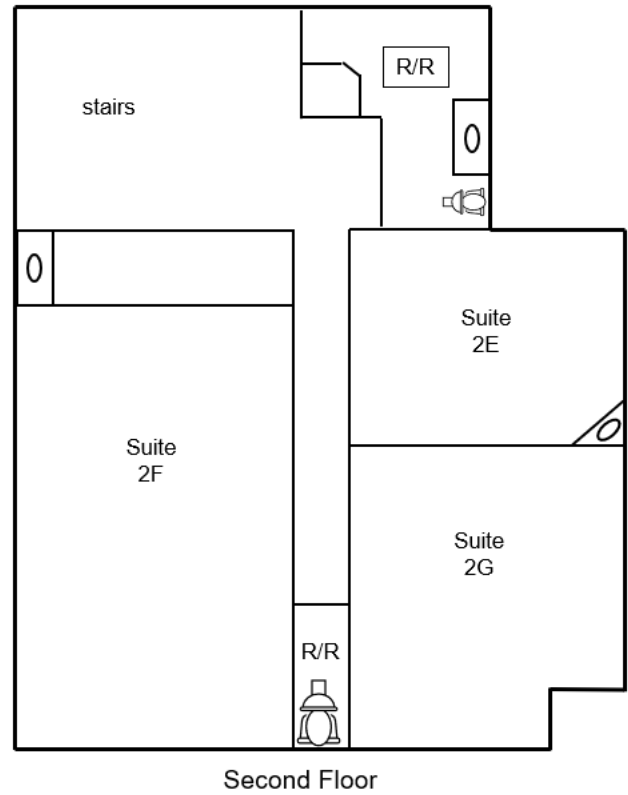
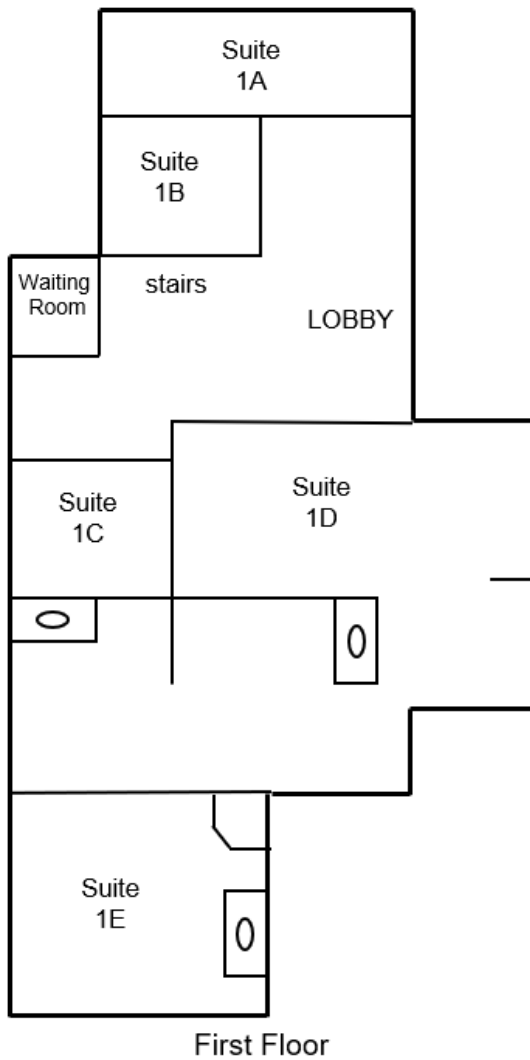
Nancy Morse CCIM, MCR, SIOR

Senior Managing Director
CA RE License #00983283
t 408-987-4175
nancy.morse@nmrk.com

Patty Steele

Senior Managing Director
CA RE License #00839635
t 408-982-8463
patty.steele@nmrk.com

Floor Plan



For more information, please contact:

Nancy Morse CCIM, MCR, SIOR

Senior Managing Director

CA RE License #00983283

t 408-987-4175

nancy.morse@nmrk.com

Patty Steele

Senior Managing Director

CA RE License #00839635

t 408-982-8463

patty.steele@nmrk.com

3055 Olin Ave, Suite 2200
San Jose, CA 95128



NEWMARK

The information contained herein has been obtained from sources deemed reliable but has not been verified and no guarantee, warranty or representation, either express or implied, is made with respect to such information. Terms of sale or lease and availability are subject to change or withdrawal without notice.

nmrk.co