



ANNA COMMERCIAL PAD - 3.69 AC

📍 SWC Rosamond Pkwy & Hwy 75, Anna, TX

TROY MORGAN, CCIM
214-466-1543
TROY@STRUCTURECOMMERCIAL.COM

ROB EXLINE
214-466-1553
ROB@STRUCTURECOMMERCIAL.COM

ANNA COMMERCIAL PAD - 3.69 AC

📍 SWC Rosamond Pkwy & Hwy 75, Anna, TX

HIGHLIGHTS

- 3.69 AC w/ Hwy 75 frontage
- C1- Commercial Zoning
- Located in one of the fastest growing cities in the metroplex!

AREA RETAILERS



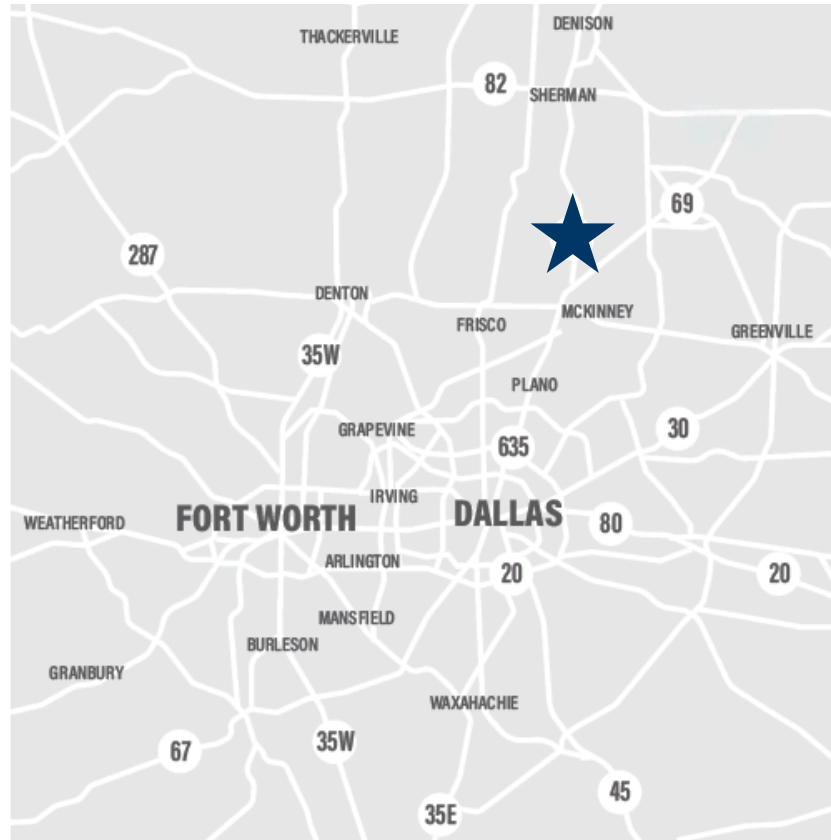
TRAFFIC COUNTS

 Hwy 75 59,606 VPD ('22)

DEMOGRAPHICS

	3 Mile	5 Mile	10 Mile
Population	24,957	53,349	100,573
Average HH Inc	\$99,969	\$114,354	\$124,200
Households	7,900	17,044	32,188

* 2024 CoStar Estimates



ANNA COMMERCIAL PAD - 3.69 AC

📍 SWC Rosamond Pkwy & Hwy 75, Anna, TX



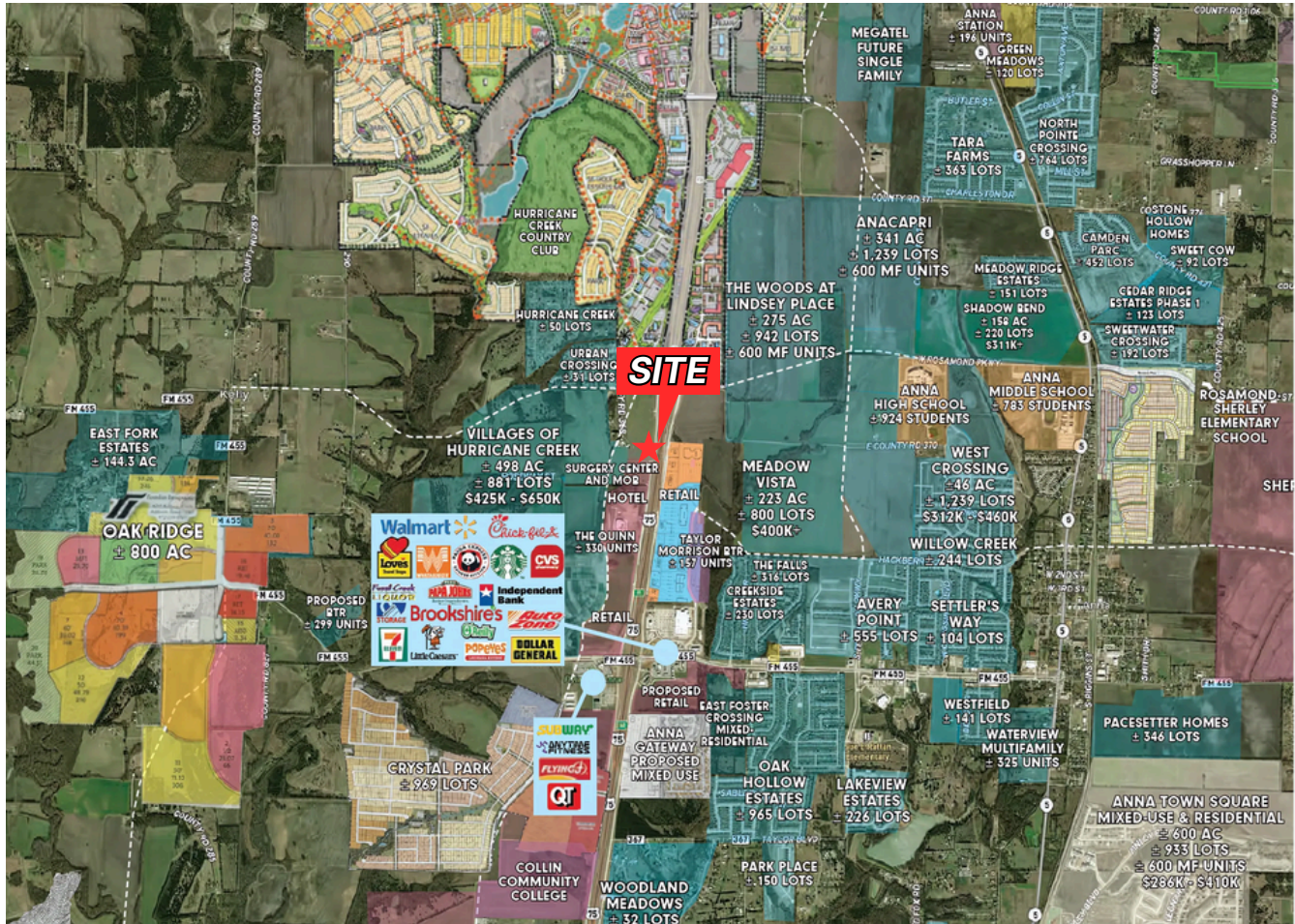
TROY MORGAN, CCIM
ROB EXLINE

214-466-1543
214-466-1553

TROY@STRUCTURECOMMERCIAL.COM
ROB@STRUCTURECOMMERCIAL.COM

ANNA COMMERCIAL PAD - 3.69 AC

📍 SWC Rosamond Pkwy & Hwy 75, Anna, TX



ANNA COMMERCIAL PAD - 3.69 AC

📍 SWC Rosamond Pkwy & Hwy 75, Anna, TX

