



SUITE SUMMARY

Available SF: 4,950-5,537

Lease Rate: Upon request

Utilities: Electric - ConEd
Water - \$30.00 / MO

Exposure: North, South,
East and West
Overlooks Broadway

Features: Hardwood floors
Original mosaic tile

- 19 Windows for ample natural light
- Central Air Park views
- Pre-built office with 4-6 meeting rooms
- HVAC
- Wet Pantry

BUILDING OVERVIEW

At 25th and Broadway, this beautiful Gilded Age building offers unique office spaces overlooking Madison Square Park and Nomad Piazza

- Classic architecture
- High ceilings
- Great light
- High-speed Internet
- On-site business center
- Conference rooms
- 24/7 access
- On-site management

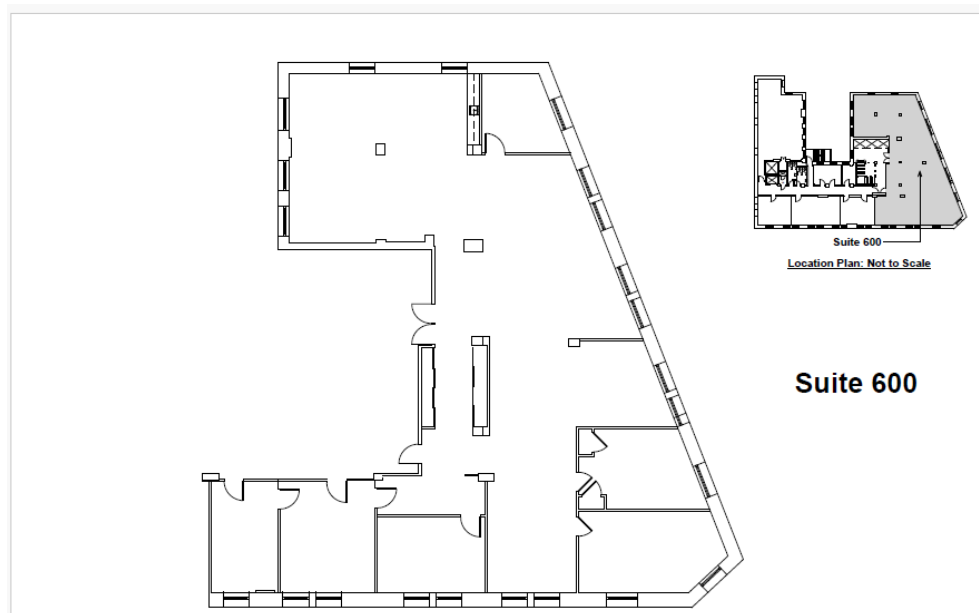
LOCATION OVERVIEW

Conveniently located near



OFFICE SPACE FOR LEASE

1123 Broadway, Suite 600



Suite 600



kewmanagement.com

Jonathan Cohen
Director of Leasing
(212) 255-3346
jcohen@kewmanagement.com