

1377 TEFFT COURT
SALINE, MICHIGAN

INDUSTRIAL FOR SALE
18,278 Square Feet Available



**SIGNATURE
ASSOCIATES**
KNOW SIGNATURE | KNOW RESULTS

CORPORATE IMAGE BUILDING



PROPERTY FEATURES

- 18,278 square feet available
- 3,078 square feet office space that includes skylights in the entrance lobby and main conference room
- 15,200 square feet clear span warehouse
- 14' – 17' clear height
- (2) 12' x 10' grade level doors
- The shop area has a metal roof, and the office area has a singled roof that was replaced in November 2023
- Fire suppression throughout
- Located on 3.84 acres with 20 parking spaces
- Room for expansion and additional parking
- Sale Price: \$2,193,360 (\$120.00/sq. ft.)



For more information, please contact:

JAY CHAVEY
(248) 948 4196
jchavey@signatureassociates.com

DRAKE FILIPPIS
(248) 799 3161
dfilippis@signatureassociates.com

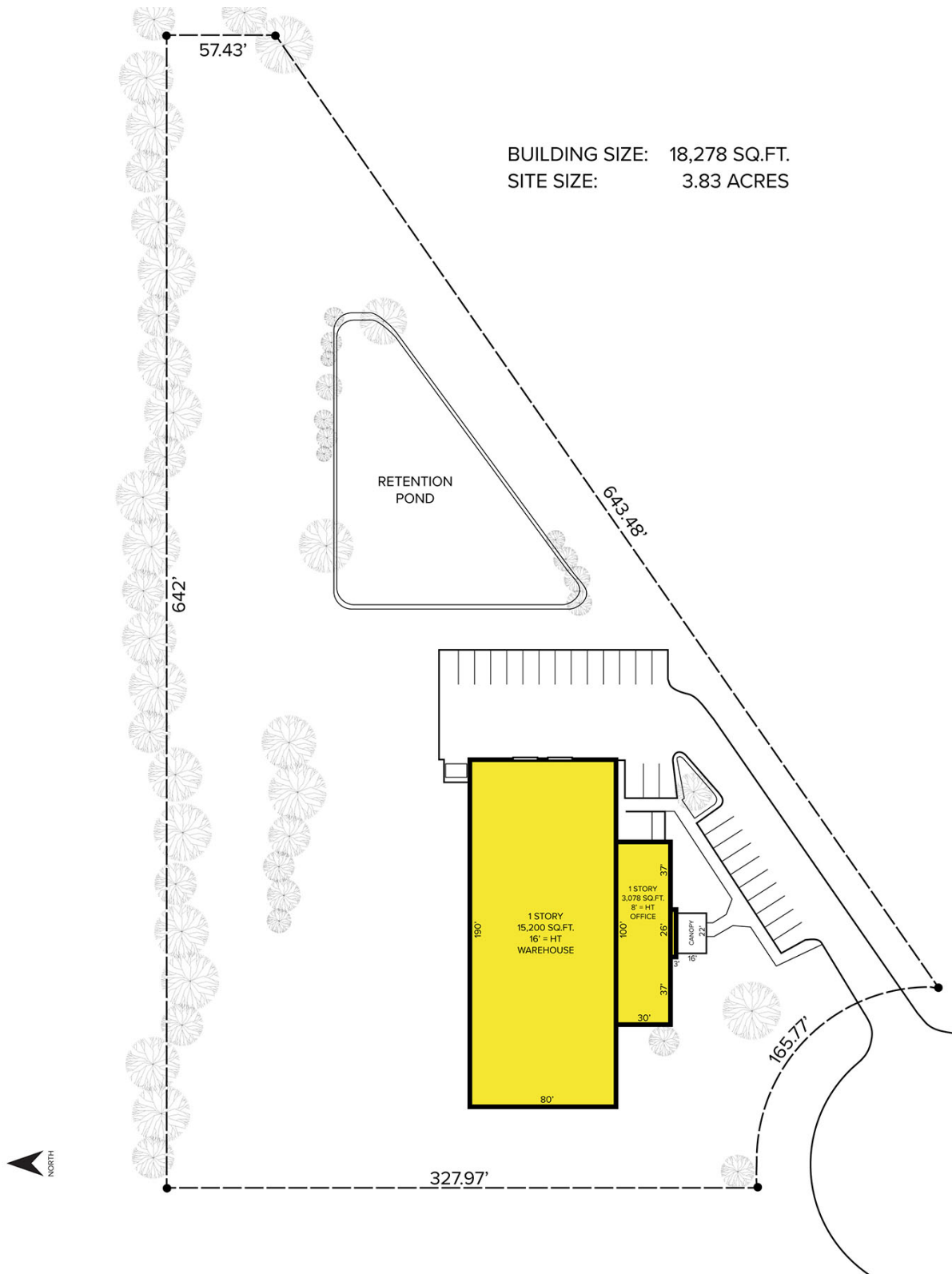
SIGNATURE ASSOCIATES
One Towne Square, Suite 1200
Southfield, MI 48076
www.signatureassociates.com

1377 Tefft Court – Saline, Michigan

Industrial For Sale

18,278
Square Feet
AVAILABLE

Site Plan



For more information, please contact:

JAY CHAVEY
(248) 948 4196

jchavey@signatureassociates.com

DRAKE FILIPPIS
(248) 799 3161

dfilippis@signatureassociates.com

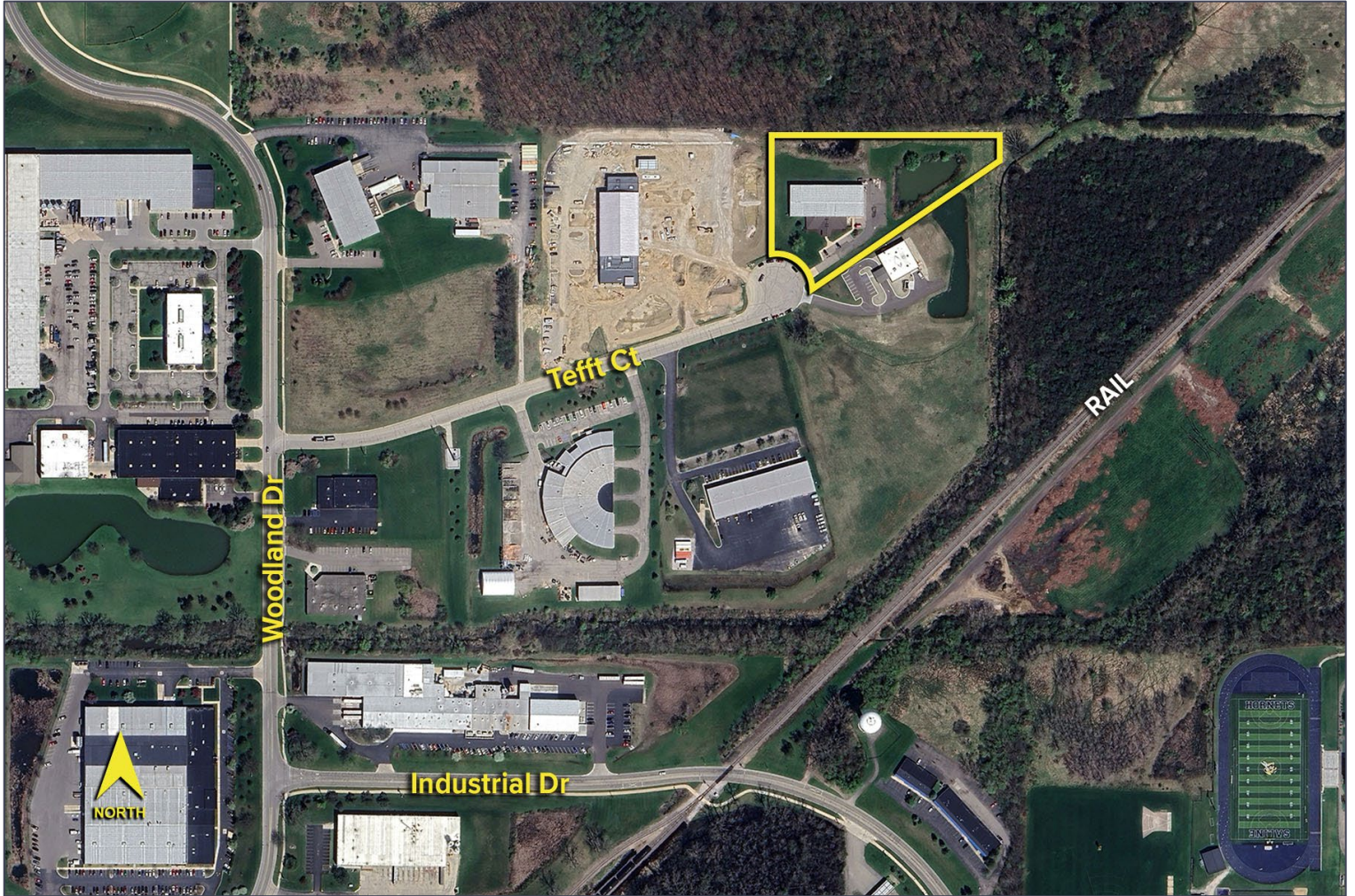
SIGNATURE ASSOCIATES
One Towne Square, Suite 1200
Southfield, MI 48076
www.signatureassociates.com

1377 Tefft Court – Saline, Michigan

Industrial For Sale

18,278
Square Feet
AVAILABLE

Aerial



For more information, please contact:

JAY CHAVEY
(248) 948 4196

jchavey@signatureassociates.com

DRAKE FILIPPIS
(248) 799 3161

dfilippis@signatureassociates.com

SIGNATURE ASSOCIATES
One Towne Square, Suite 1200
Southfield, MI 48076
www.signatureassociates.com