



1979 10th Ave N

1979 10th Ave N, Lake Worth Beach, FL 33461

COMPASS



Ross Kuflik

Compass Fort Lauderdale
1200 E Las Olas Blvd, Fort Lauderdale, FL 33301
ross.kuflik@compass.com
(631) 532-9189



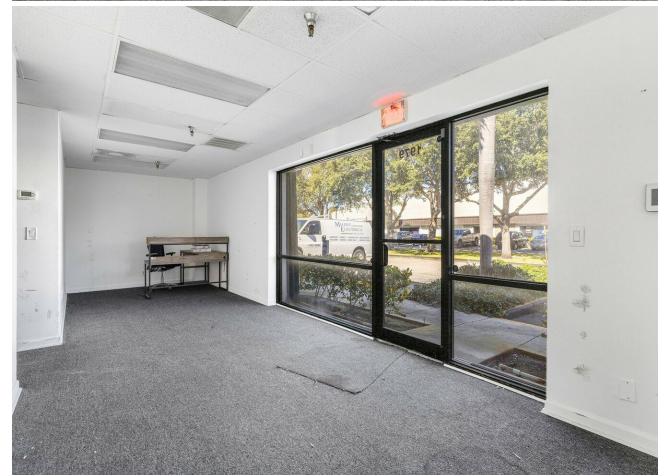
1979 10th Ave N

\$1,100,000

Great opportunity for an in user or investor or 1031 exchange. 1979 10th Ave N, Lake Worth Beach condo, offers almost 3600 SF of functional warehouse space, air conditioned store front. Property has 1 rear bay door, 1 front entrance, a bathroom, plumbing for a second bathroom, and high 23 feet ceiling height. The property is in good condition and location is excellent as it is near I-95 and major airports. To schedule all showings. All sized are estimated and responsibility of the buyer to confirm. It's one unit, 1 story....

Great opportunity for an in user or investor or 1031 exchange. 1979 10th Ave N, Lake worth Beach offers almost 3600 SF of functional warehouse space, air conditioned store front. Property has 1 bay door, 1 front entrance, a bathroom, plumbing for a second bathroom, and high 23 feet ceiling height. The property is in good condition and location is excellent as it is near I-95 and major airports. To schedule all showings. All sized are estimated and responsibility of the buyer to confirm. It's one unit, 1 story....

- HI CEILING HEIGHT, CLOSE TO I 95, CLOSE TO P B I INTL AIRPORT, GOOD CONDITION,



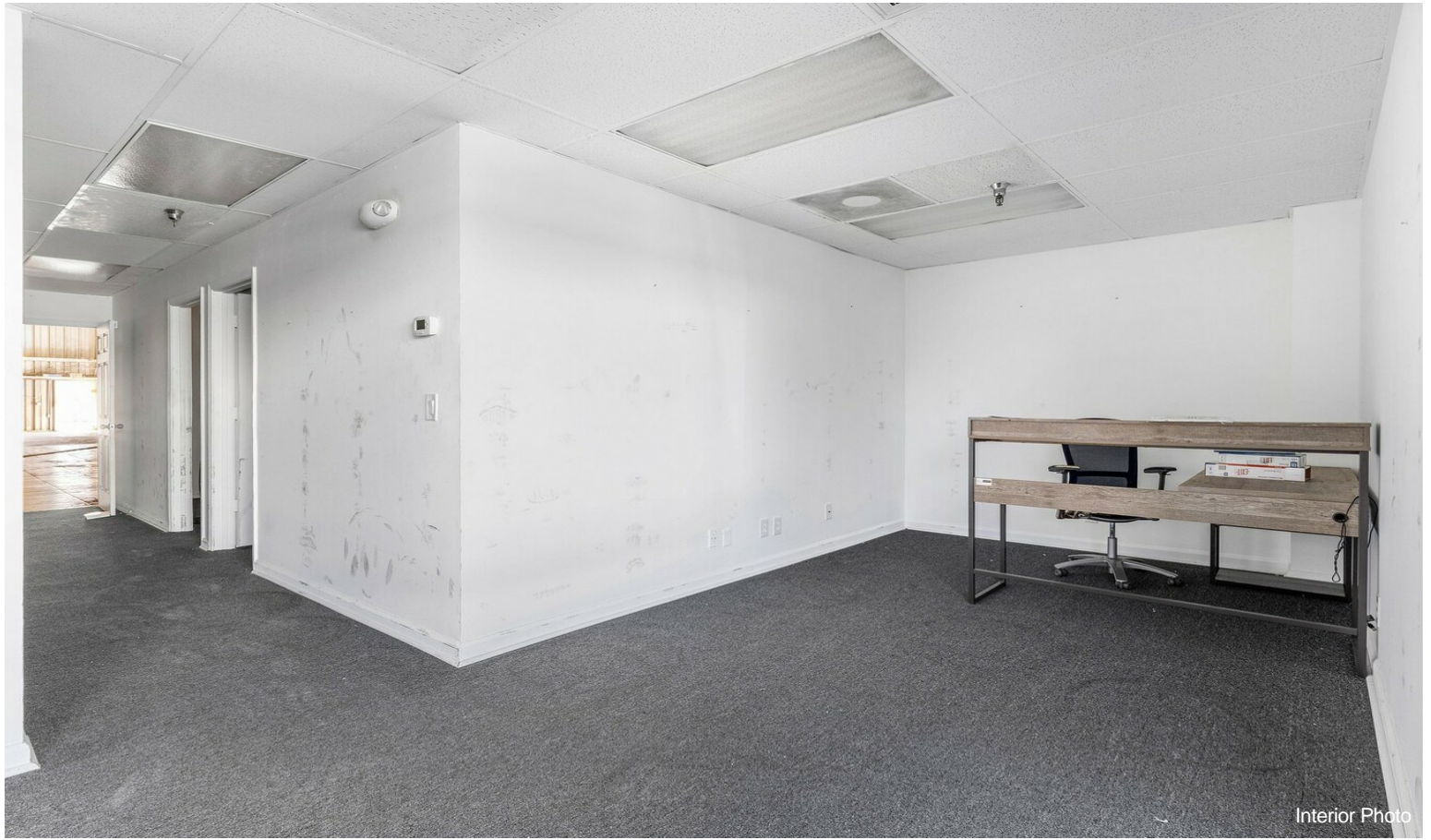
Price:	\$1,100,000
Unit Size:	3,600 SF
No. Units:	1
Total Building Size:	3,600 SF
Property Type:	Flex
Property Subtype:	Light Distribution
Sale Type:	Investment
Building Class:	B
Floors:	1
Typical Floor Size:	3,600 SF
Year Built:	1979



1979 10th Ave N, Lake Worth Beach, FL 33461

Great opportunity for an in user or investor or 1031 exchange. 1979 10th Ave N, Lake Worth Beach condo, offers almost 3600 SF of functional warehouse space, air conditioned store front. Property has 1 rear bay door, 1 front entrance, a bathroom, plumbing for a second bathroom, and high 23 feet ceiling height. The property is in good condition and location is excellent as it is near I-95 and major airports. To schedule all showings. All sized are estimated and responsibility of the buyer to confirm. It's one unit, 1 story.

Property Photos



Interior Photo

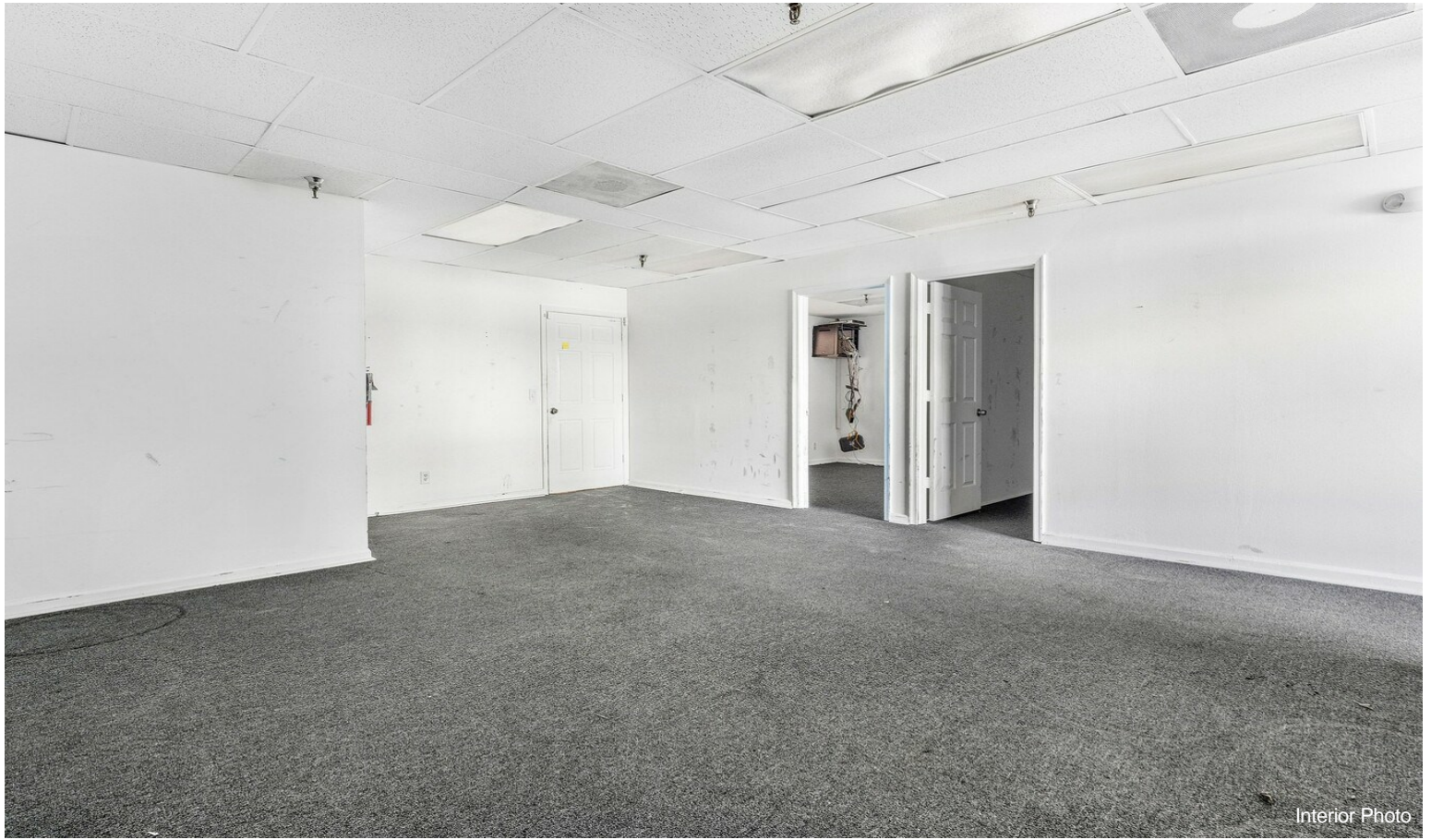


Interior Photo

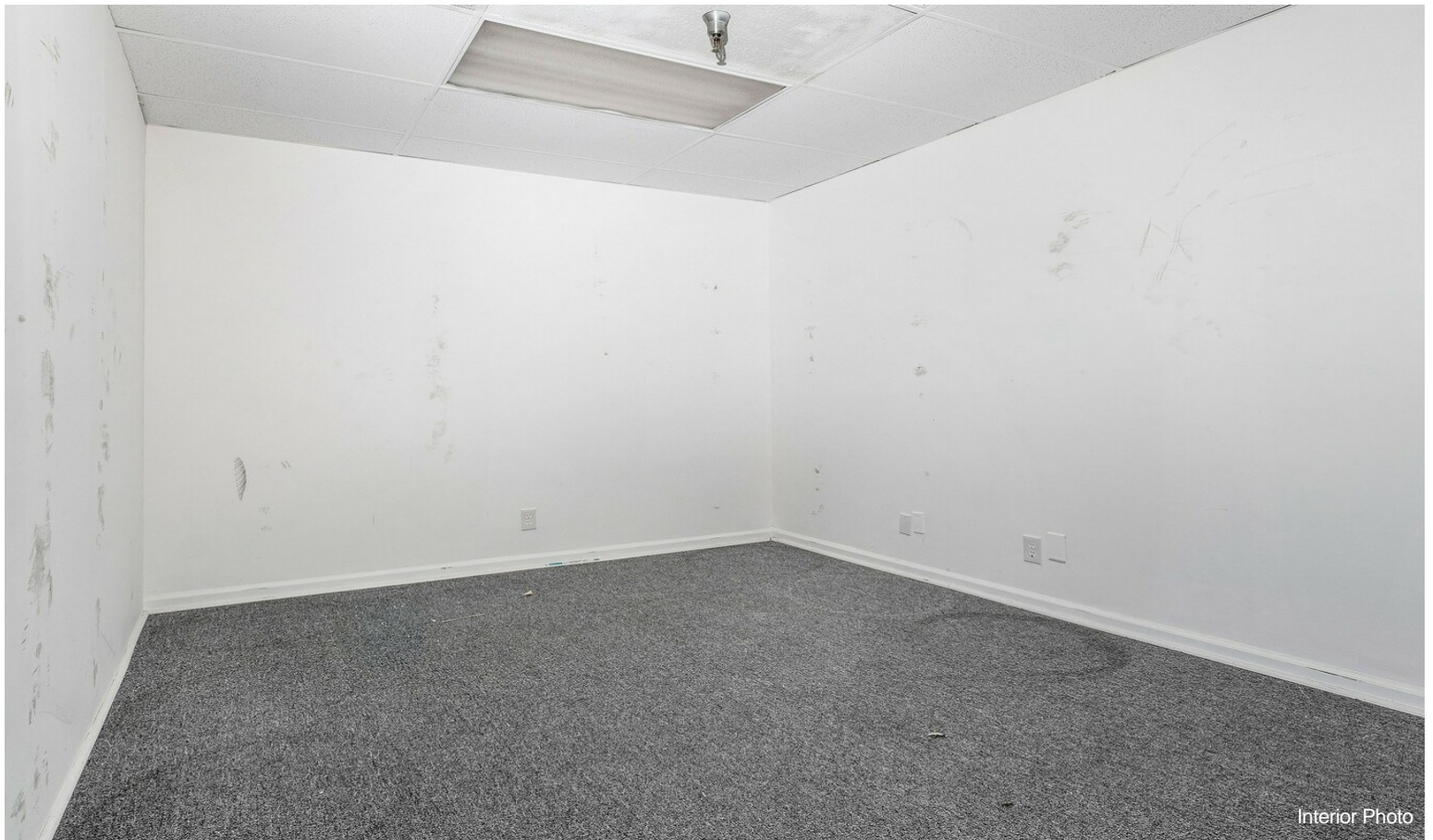
Property Photos



Property Photos



Interior Photo

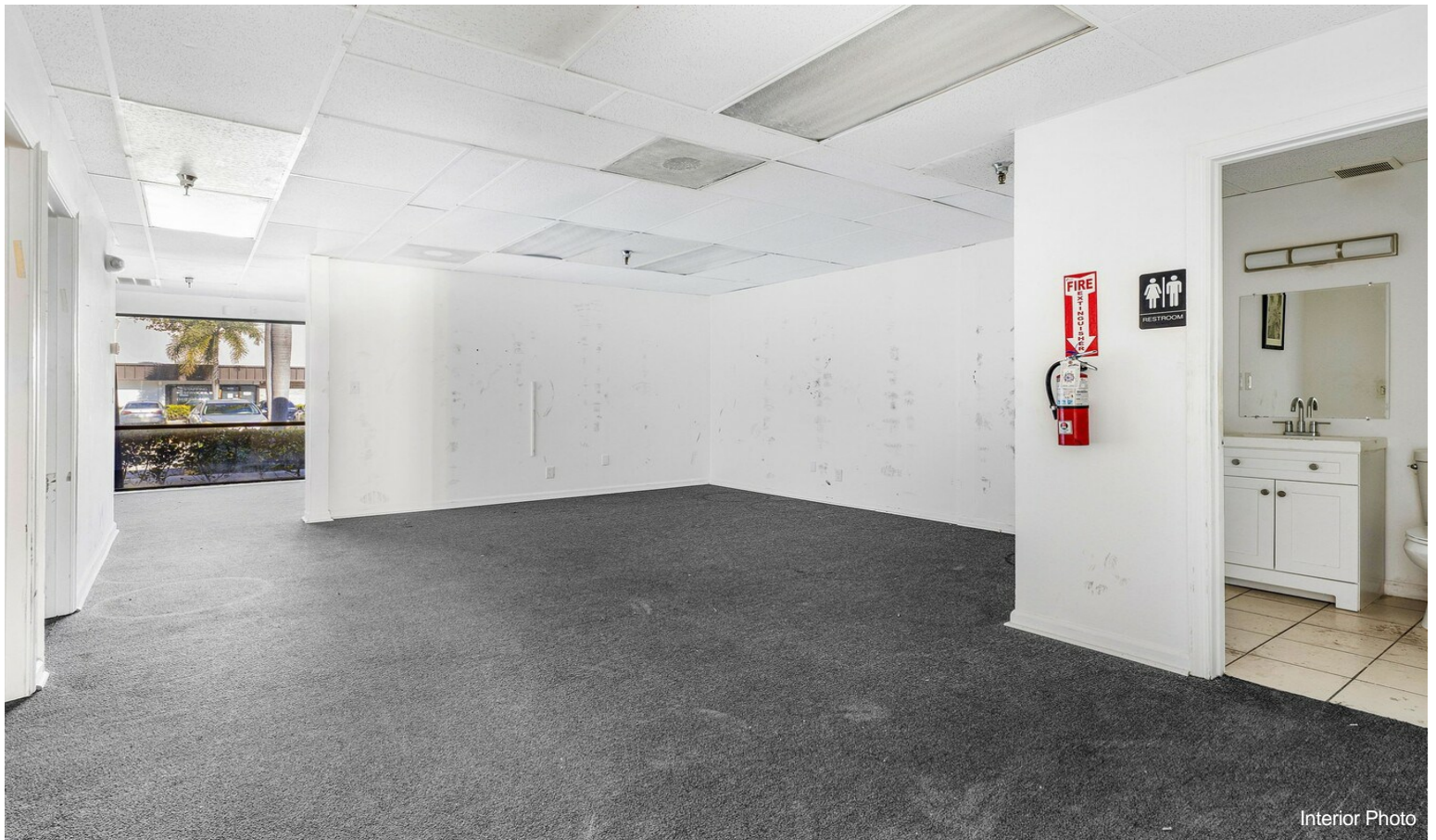


Interior Photo

Property Photos



Interior Photo



Interior Photo

Property Photos



Interior Photo



Interior Photo

Property Photos



Interior Photo



Interior Photo

Property Photos



Interior Photo



Building Photo

Property Photos

