



REDUCED PRICE

Colliers

Accelerating success.

FOR SUBLEASE

CONTACT US

Bart McIntosh

Associate

+1 434 284 4005

bart.mcintosh@colliers.com

Peter Jefferson Place I Suite 350

675 Peter Jefferson Pkwy, Charlottesville, VA

This attractive Class A office is located in a park-like setting with immediate accessibility to I-64 the 250 Bypass and just minutes from Downtown Charlottesville. The mixed-use campus boasts lakes extensive walking trails a market-leading hospital, Hilton Garden Inn, a new multi-family complex, art museum, and The ACAC Wellness & Fitness Center.

- 4,829 rentable square feet of class A office
- 3rd-floor unit with abundant natural light and excellent views of the park
- Open floor plan with private offices, multiple conference rooms, and a large kitchen
- The building includes a beautiful exterior patio seating area overlooking the park and amazing walking trails around the lake.
- Attractive two-story atrium lobby with marble tile flooring and glass panels welcomes you and your clients to the building
- **\$28.50 PSF full-service**
- Available immediately

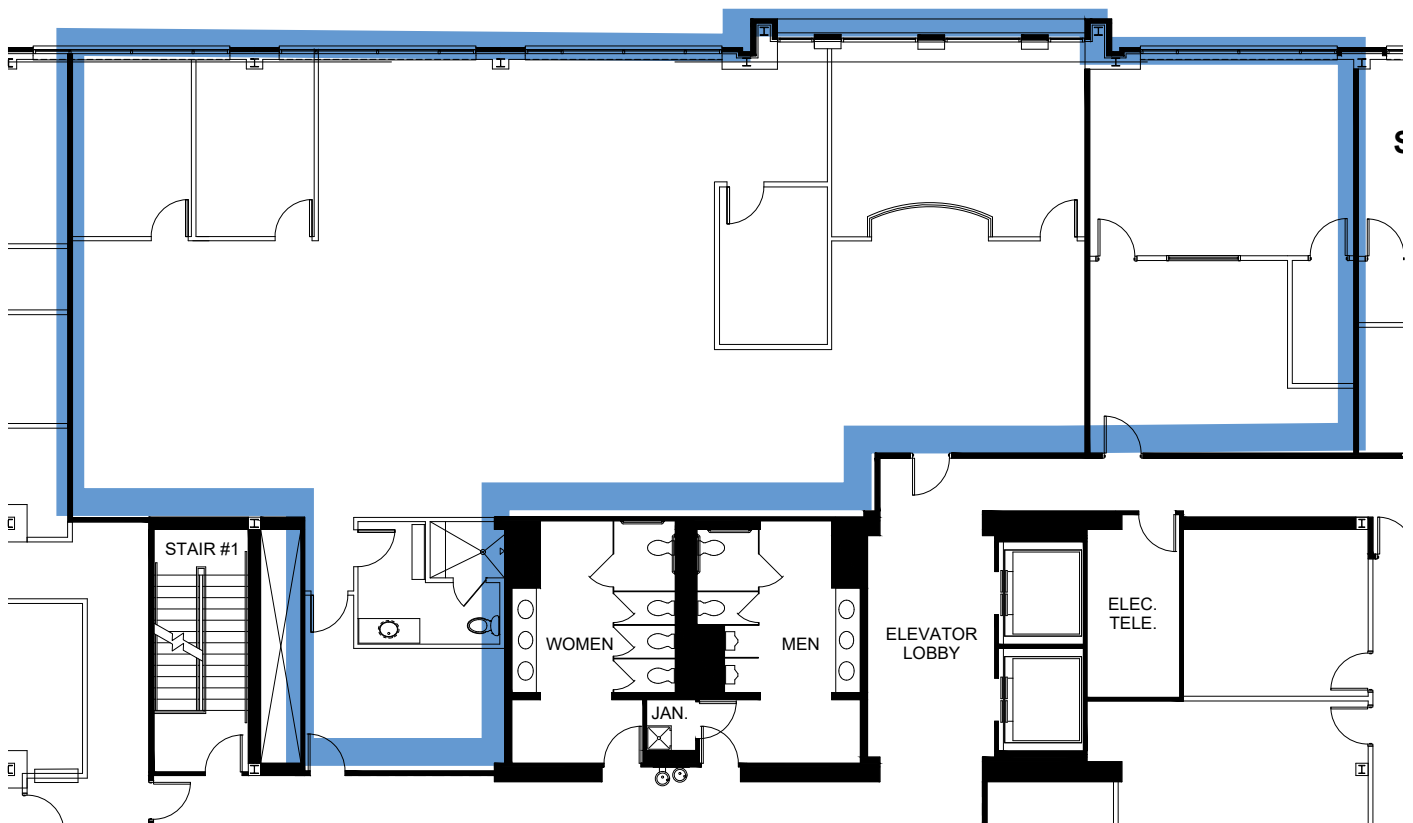
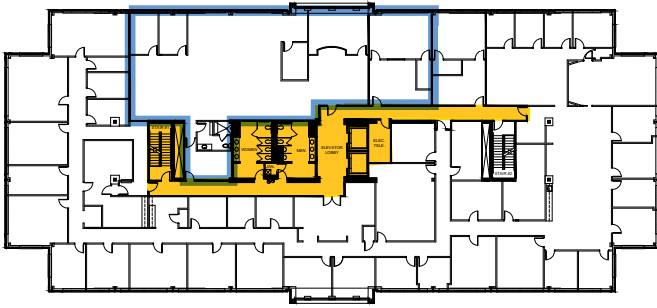
Colliers

701 E Water St, Suite 301

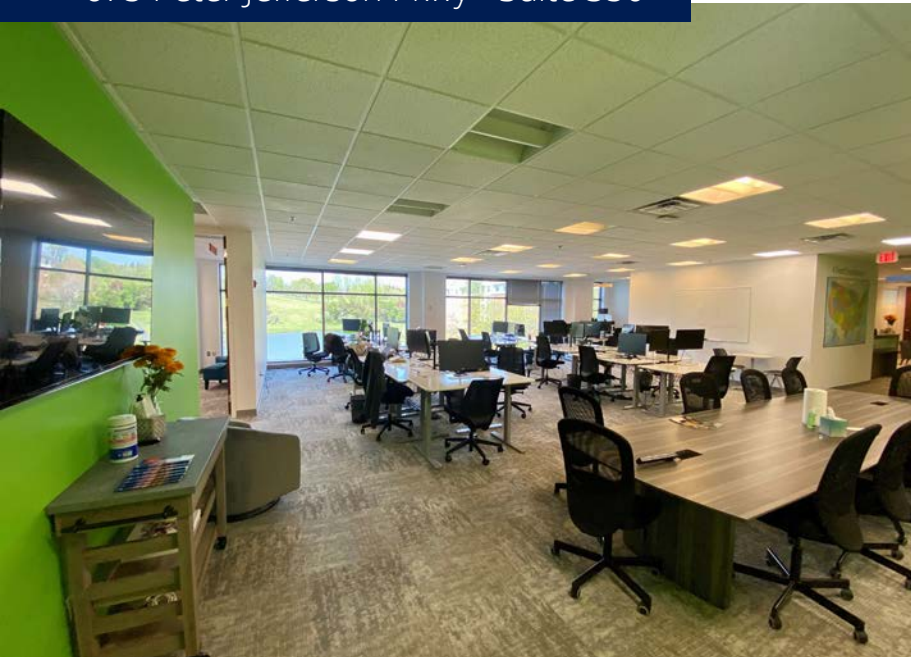
Charlottesville, VA

P: +1 434 974 7377

4,829 RSF



675 Peter Jefferson Pkwy - Suite 350



675 Peter Jefferson Pkwy - Suite 350

Pantops Shopping Center

 **DOLLAR TREE**



Aaron's

HANGRY HUT



2024 Demographics

	1 miles	3 miles	5 miles
Population	3,378	27,521	97,226
Daytime Population	7,816	34,565	132,882
Households	1,799	13,081	40,155
Average Household Income	\$123,402	\$127,624	\$114,641

Copyright © 2025 Colliers International. Information herein has been obtained from sources deemed reliable, however its accuracy cannot be guaranteed. The user is required to conduct their own due diligence and verification.

CONTACT US

Bart McIntosh

Associate

+1 434 284 4005

bart.mcintosh@colliers.com

Colliers

701 E Water St, Suite 301

Charlottesville, VA

P: +1 434 974 7377