



# New To Market

**Minutes from the Vibe of  
Everything Asbury Park**

## Office/Creative Studio Space For Sale or Lease

- 910 4th Avenue, Asbury Park, NJ
- +/-14,400 SF building, +/-0.344-acre lot
- One drive-in door with ground level access to the +/-3,120 SF garage / warehouse
- Built 1920 / Renovated 2007
- Separately metered utilities
- Elevator and stairwell access
- Private bathrooms
- Onsite parking for 15 vehicles
- Call for sale or lease pricing

**Doug Twyman, SIOR**

Licensed RE Salesperson  
+1 732 236 8899  
[Doug.Twyman@colliers.com](mailto:Doug.Twyman@colliers.com)

**Chidi Egesionu**

Licensed RE Salesperson  
+1 732 734 0492  
[Chidi.Egesionu@colliers.com](mailto:Chidi.Egesionu@colliers.com)



Colliers International NJ LLC  
10 Woodbridge Center Dr., Suite 1010  
Woodbridge, NJ 07095  
P: +1 782 807 0400  
[colliers.com](http://colliers.com)

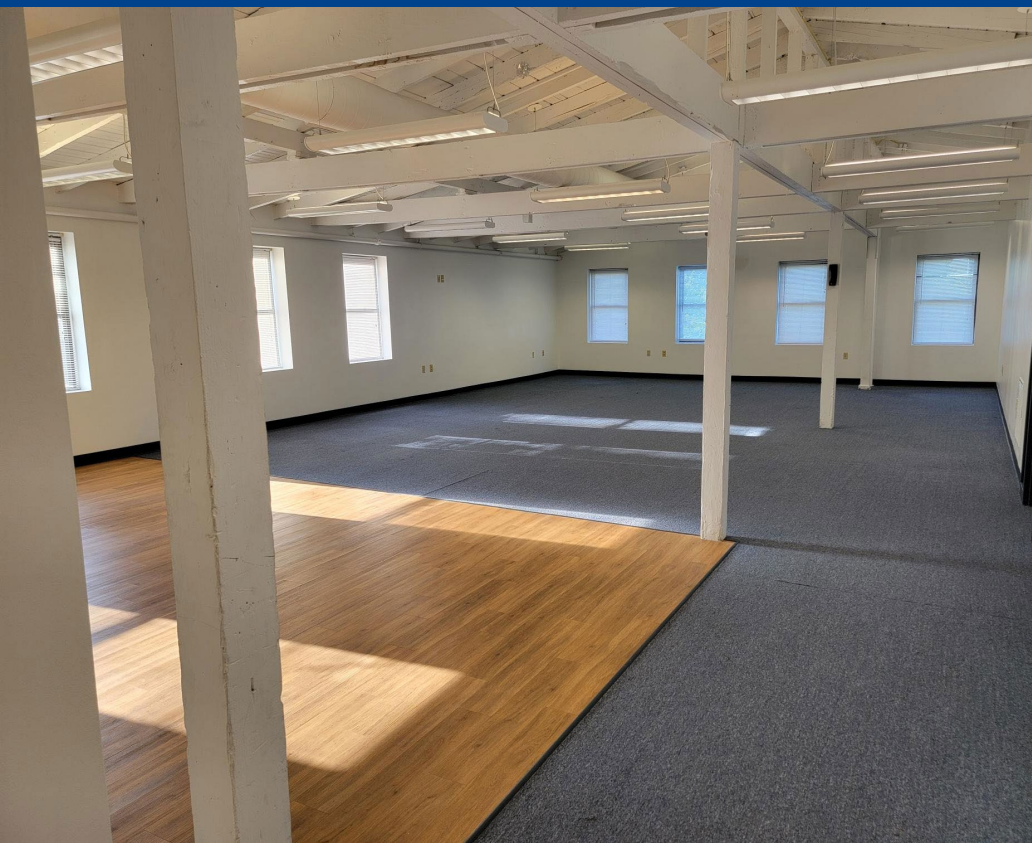




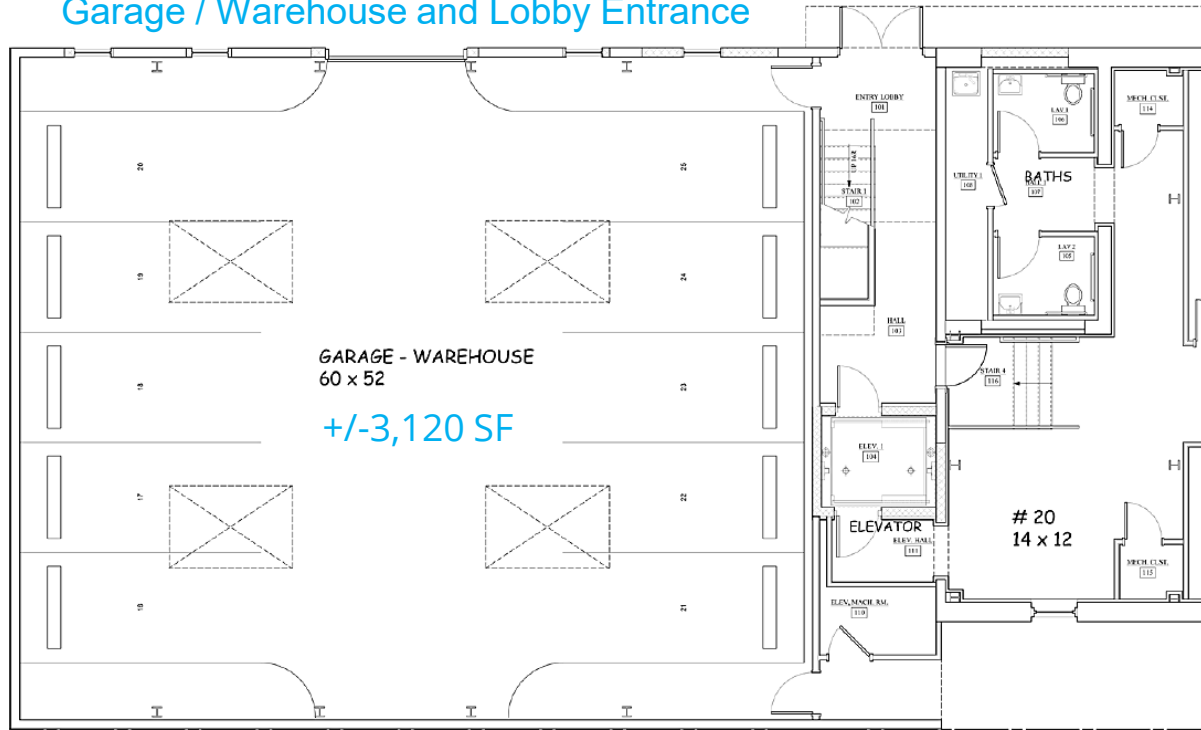
## The Area

Asbury Park has transformed into one of New Jersey's most dynamic coastal hubs. With its buzzing boardwalk, bold arts scene, and year-round energy, it's a destination that draws both locals and out-of-towners.

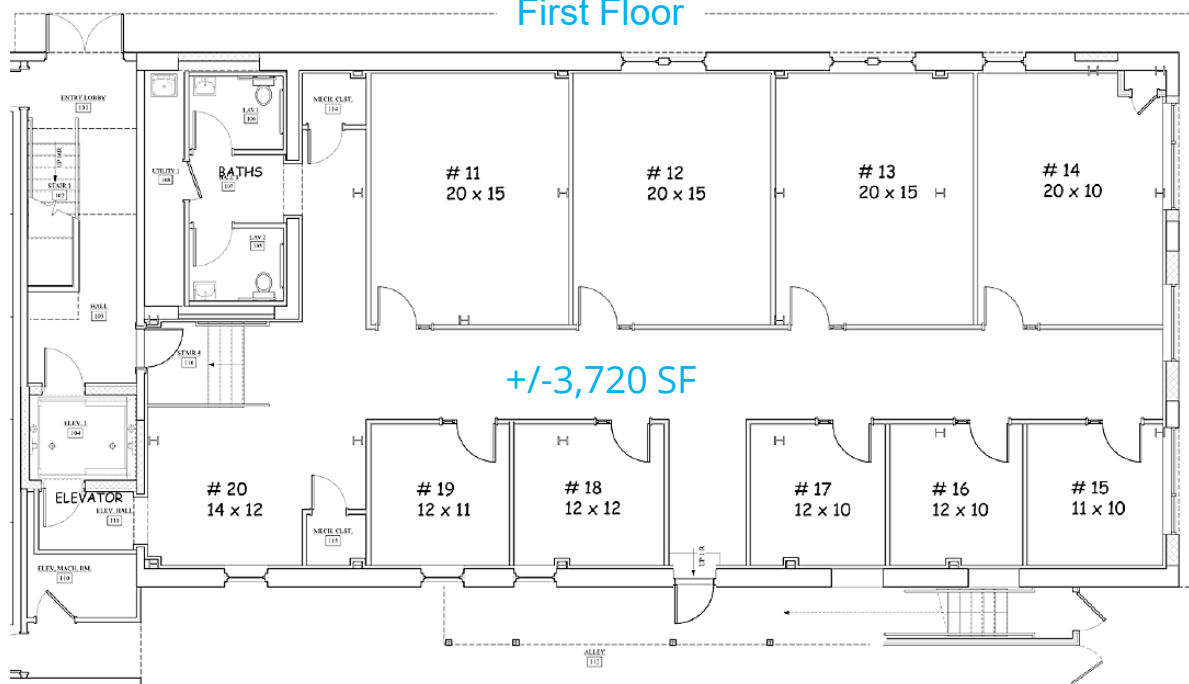
From creative pop-ups to renowned food festivals, this is a place where events, culture, and business thrive side by side. Independent retailers, flourishing restaurants, and iconic music venues create an atmosphere unlike anywhere else on the Jersey Shore.



## Garage / Warehouse and Lobby Entrance



## First Floor



## Zoning: Business District

- Stores and shops for the conduct of a retail trade or services
- Personal services
- Restaurants
- Art galleries, art studios
- Artist live/work studios
- Convenience stores
- Business, secretarial, and trade schools
- Instructional schools
- Health and fitness clubs
- Business and professional offices, and banks
- Medical offices



## Second Floor

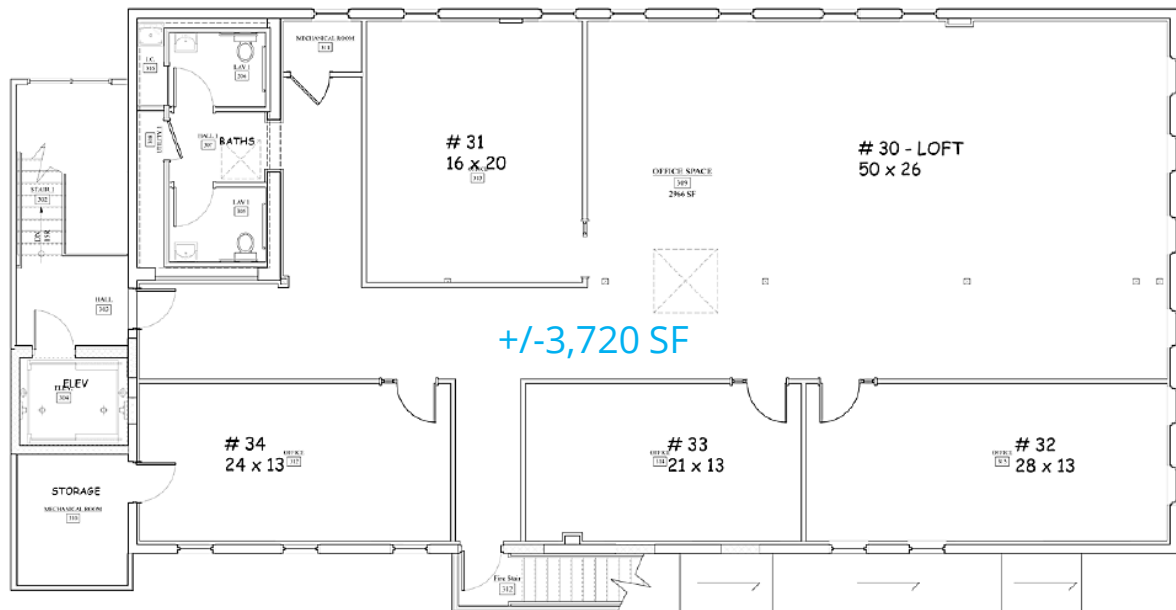


+/-3,720 SF

## Location

Steps from the sand and minutes from NYC transit routes, Asbury Park offers the perfect blend of beach-town vibes and urban edge – ideal for businesses looking to grow in a city full of character and momentum.

## Third Floor



+/-3,720 SF

## Demographics

(5 Mile Radius)

- Total Population: 136,764
- Total Households: 58,768
- Median Household Income: \$100,647
- Average Household Income: \$137,221
- Per Capita Income: \$59,082
- Total Businesses: 6,064
- Total Daytime Population: 133,537

Source: Esri, U.S. Census

Colliers

# Location

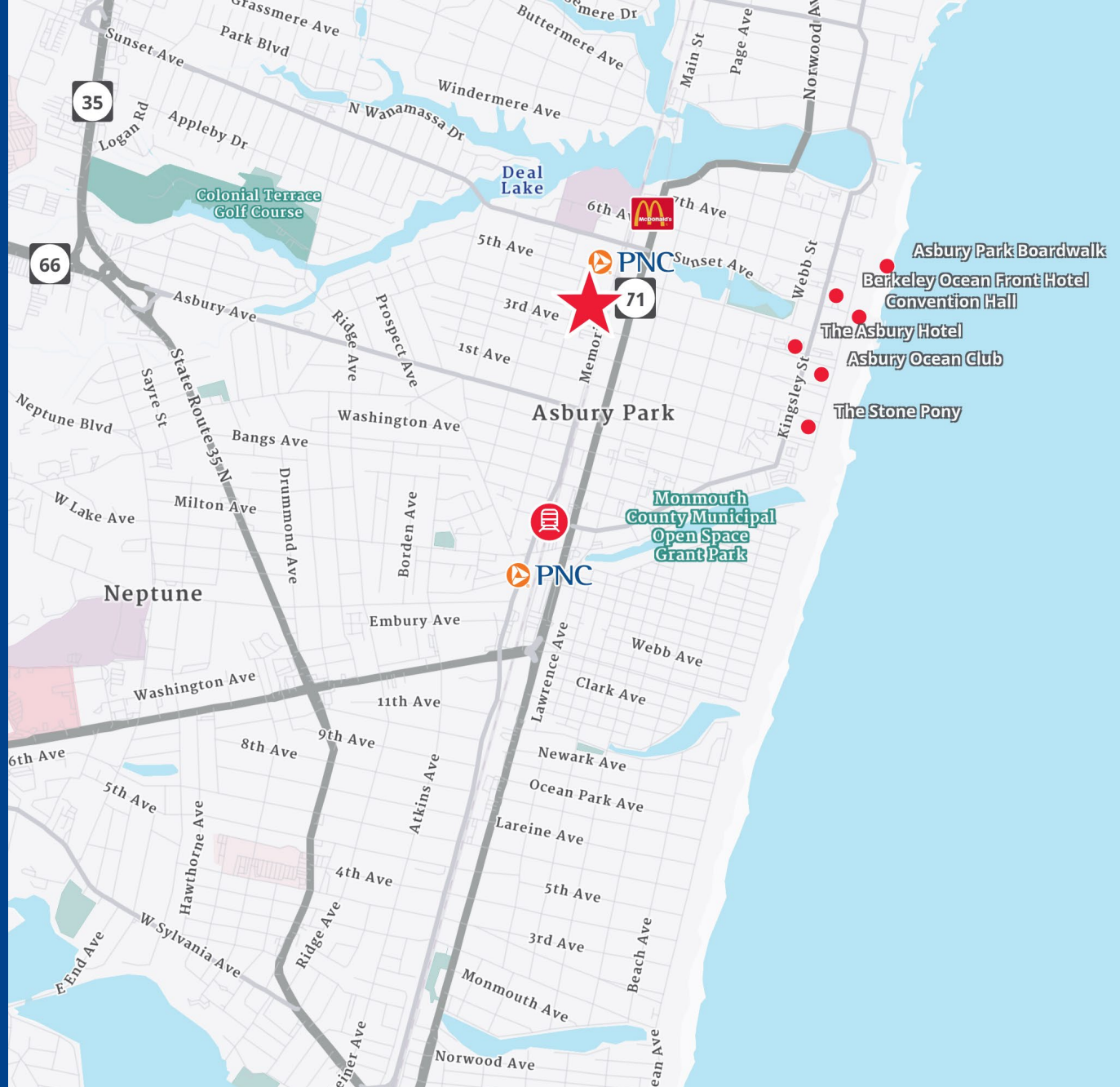
- 910 4<sup>th</sup> Avenue is a short distance to/from the Asbury Park Boardwalk
- Convenient to nearby restaurants, shopping and nightlife
- Close to NJ Transit Asbury Park Station, Routes 71, 66, 33, 35 & 18

## Doug Twyman, SIOR

Licensed Broker Salesperson  
+1 732 236 8899  
[doug.twyman@colliers.com](mailto:doug.twyman@colliers.com)

## Chidi Egesionu

Licensed Salesperson  
+1 732 734 0492  
[chidi.egesionu@colliers.com](mailto:chidi.egesionu@colliers.com)



**Colliers International NJ LLC**  
10 Woodbridge Center Dr., #1010  
Woodbridge, NJ 07095  
P: +1 732 807 0400

[colliers.com](http://colliers.com)

This document/email has been prepared by Colliers for advertising and general information only. Colliers makes no guarantees, representations or warranties of any kind, expressed or implied, regarding the information including, but not limited to, warranties of content, accuracy and reliability. Any interested party should undertake their own inquiries as to the accuracy of the information. Colliers excludes unequivocally all inferred or implied terms, conditions and warranties arising out of this document and excludes all liability for loss and damages arising there from. This publication is the copyrighted property of Colliers and /or its licensor(s). © 2025. All rights reserved. This communication is not intended to cause or induce breach of an existing listing agreement. *Colliers International NJ LLC*