

NEW ON THE MARKET!
±1,029 to ±1,713 Square Feet Available

MEDICAL/OFFICE FOR LEASE AND SALE



3131 S. BASCOM AVENUE | SAN JOSE, CA.

HIGHLIGHTS:

- Condo Conversion in Progress
- Lease Now, Finalize Condo Purchase Later
- Planned Upgrades, including Elevator
- Picture Shows Planned Renovations
- Parking Ratio 3.3/1,000 SF
- Proximity to The Pruneyard, Downtown Campbell & Good Samaritan Hospital
- Great Location Near Intersection of Hwy 17 & 85
- Please Call for More Information

Please Contact Exclusive Agents:

BRIAN COSTELLO
Senior Vice President
+ 1 408.316.7447
bcostello@ritchiecommercial.com
DRE License No. 01914680

JANA GLUCKMAN
Vice President
+ 1 408.529.7988
jgluckman@ritchiecommercial.com
DRE License No. 00693034

RITCHIE Commercial
RESPONSIBLE REAL ESTATE

34 W. SANTA CLARA STREET, SAN JOSE, CA 95113
DRE # 01209214 | www.ritchiecommercial.com
1 408.971.2700 f 1 408.971.1600

San Francisco | San Jose | Santa Cruz | Walnut Creek

The information contained herein has been obtained from sources we deemed reliable. We cannot, however assume responsibility for its accuracy.

NEW ON THE MARKET!

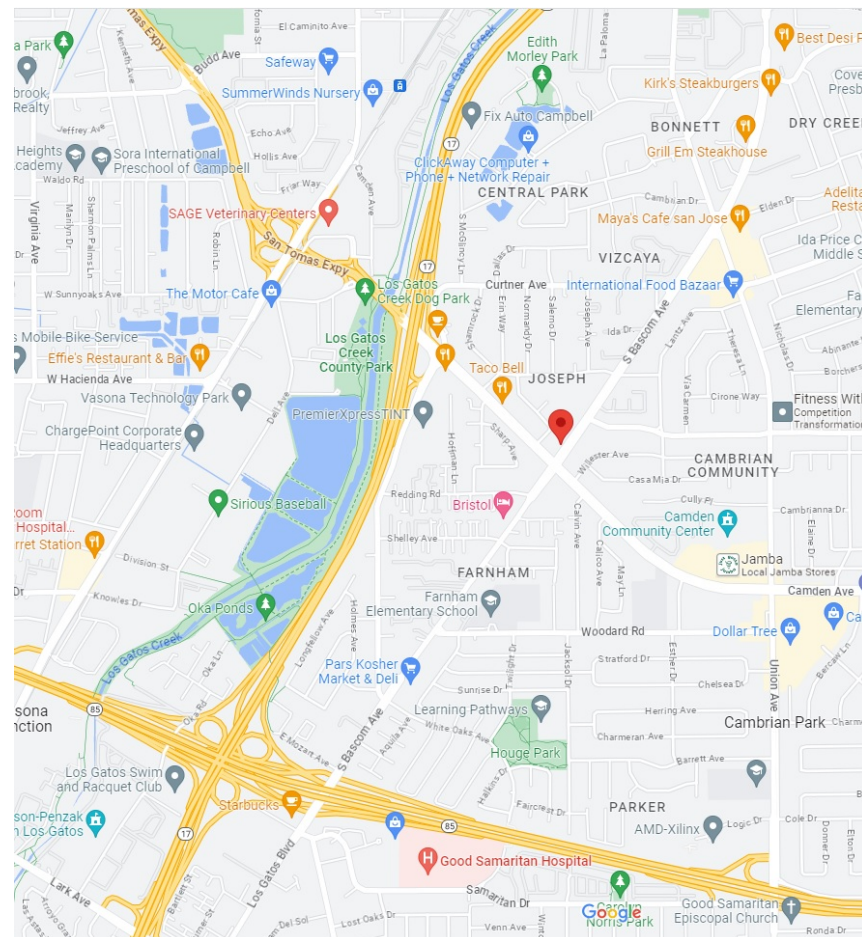
±1,029 to ±1,713 Square Feet Available

MEDICAL/OFFICE FOR LEASE/SALE

SUITES AVAILABLE:

SUITE	SQUARE FEET	MONTHLY RENT NNN	SALE PRICE/PSF
100*	1,286	\$1.75	\$795
110	1,075	\$1.75	\$690
120	1,029	\$1.75	\$690
130*	1,049	\$1.75	\$795
150	1,400	\$1.75	\$690
220	1,522	\$1.75	\$690
200	1,577	\$1.75	\$690
250	1,713	\$1.75	\$690

* Note: Suites 100 and Suite 130 are fully improved dental offices



3131 S. BASCOM AVENUE | SAN JOSE , CA.

Please Contact Exclusive Agents:

BRIAN COSTELLO
Senior Vice President
+ 1 408.316.7447
bcostello@ritchiecommercial.com
DRE License No. 01914680

JANA GLUCKMAN
Vice President
+ 1 408.529.7988
jgluckman@ritchiecommercial.com
DRE License No. 00693034

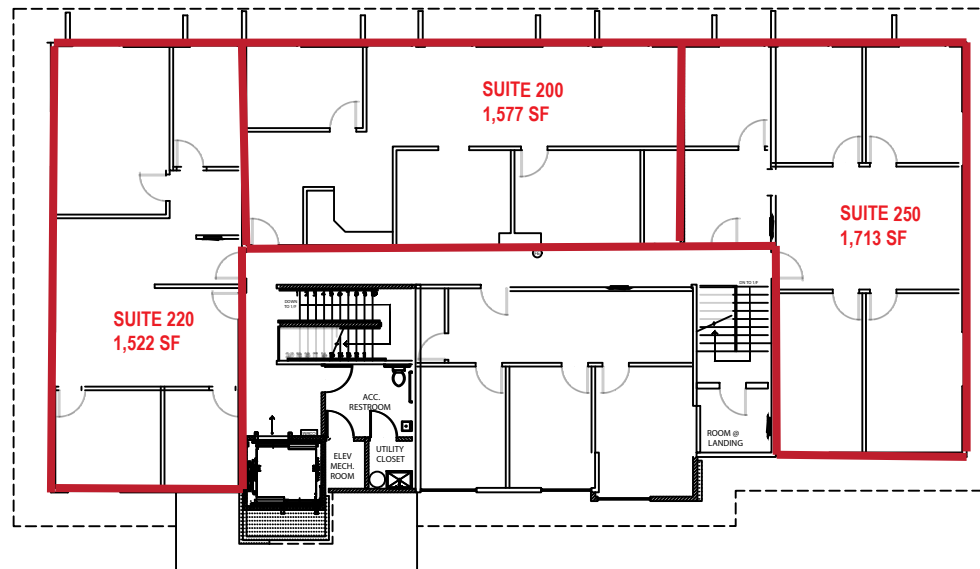
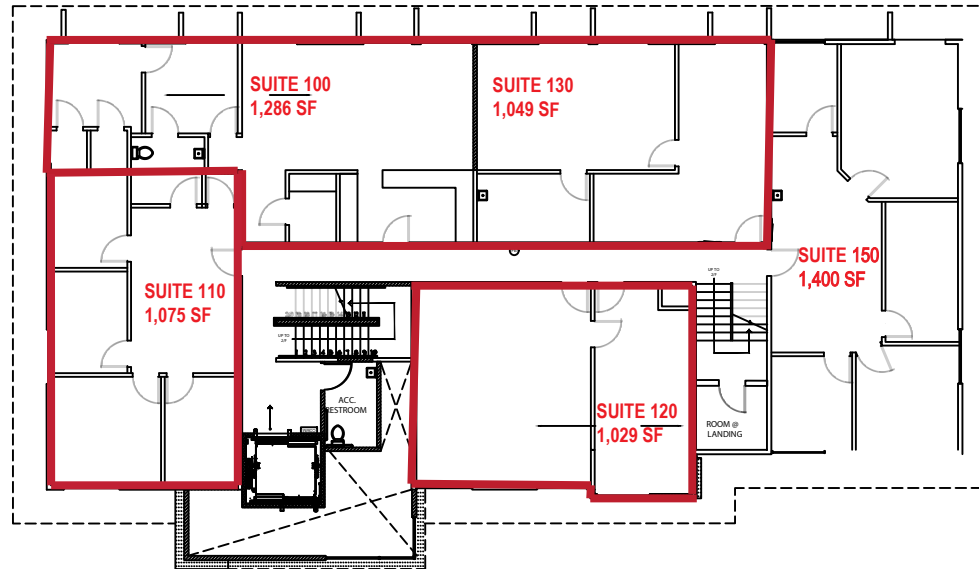
RITCHIE Commercial
RESPONSIBLE REAL ESTATE

34 W. SANTA CLARA STREET, SAN JOSE, CA 95113
DRE # 01209214 | www.ritchiecommercial.com
1 408.971.2700 f 1 408.971.1600

San Francisco | San Jose | Santa Cruz | Walnut Creek

The information contained herein has been obtained from sources we deemed reliable. We cannot, however assume responsibility for its accuracy.

3131 S. BASCOM AVENUE | SAN JOSE, CA. Floor Plans



Please Contact Exclusive Agents:

BRIAN COSTELLO
Vice President
+ 1 408.316.7447
bcostello@ritchiecommercial.com
DRE License No. 01914680

JANA GLUCKMAN
Vice President
+ 1 408.529.7988
jgluckman@ritchiecommercial.com
DRE License No. 00693034

RITCHIE Commercial
RESPONSIBLE REAL ESTATE

34 W. SANTA CLARA STREET, SAN JOSE, CA 95113
DRE # 01209214 | www.ritchiecommercial.com
1 408.971.2700 f 1 408.971.1600

San Francisco | San Jose | Santa Cruz | Walnut Creek

The information contained herein has been obtained from sources we deemed reliable. We cannot, however assume responsibility for its accuracy.