

FOR SALE IN APACHE JUNCTION

OUTSTANDING ±2,800 SF RETAIL LOCATION W/ GATED YARD



SALE PRICE | \$600,000

306 S IRONWOOD DR | APACHE JUNCTION, AZ 85120

PAUL WOODS
O 480.966.2301
M 480.420.7460
pwoods@cpiaz.com

REX GRISWOLD
O 480.966.2301
M 480.244.7222
rgriswold@cpiaz.com

ANDY JAFFE
D 480.214.1132
M 602.330.8777
ajaffe@cpiaz.com



COMMERCIAL PROPERTIES INC.

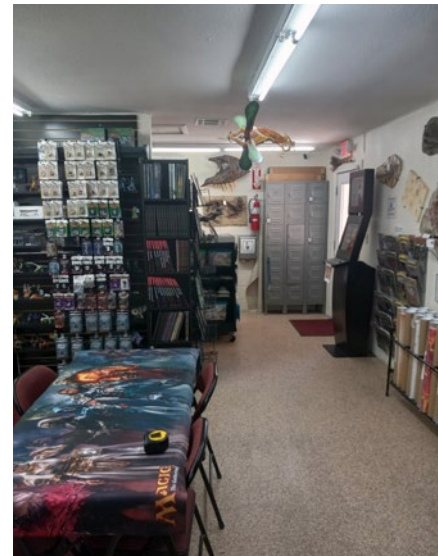
Locally Owned. Globally Connected. CORFAC INTERNATIONAL

2323 W. University Dr, Tempe, AZ 85281
8777 N. Gainey Center Dr, Ste 245, Scottsdale, AZ 85258
480.966.2301 | WWW.CPIAZ.COM

ABOUT THE PROPERTY

Explore the potential of this exceptional retail property located at 306 S Ironwood Dr in Apache Junction, AZ. Offering a spacious 2,800 square feet of retail area, along with a small gated yard and approx. 90-square-foot storage unit, this property caters to a variety of business needs. With B-1 General Commercial zoning, it provides flexibility for diverse ventures. Additionally, the property features a yard for additional storage, enhancing its utility. Moreover, enjoy the advantage of 99 feet of frontage on Ironwood, providing excellent visibility. Don't miss the opportunity to establish your business in this thriving commercial location.

- Free Standing Building
- Great Retail Frontage on Ironwood
- Gated Yard and Shed for Additional Storage
- Large Area for Retail Sales
- Large Additional Area for Offices or Materials
- Fully Air-Conditioned Throughout
- Up-Front Parking
- 200 Amps, Single Phase Power



306 S IRONWOOD DR, STE 1 | APACHE JUNCTION, AZ 85120

ADDRESS 306 S Ironwood Dr
Apache Junction, AZ 85120

LOT SIZE ±11,761 SF

BUILDING SIZE ± 2,800 SF

YEAR BUILT 1978

FRONTAGE 99' on Ironwood Dr

PARKING (10) Car Parking

TENANCY Single

APN 101-09-1020

ZONING B-1

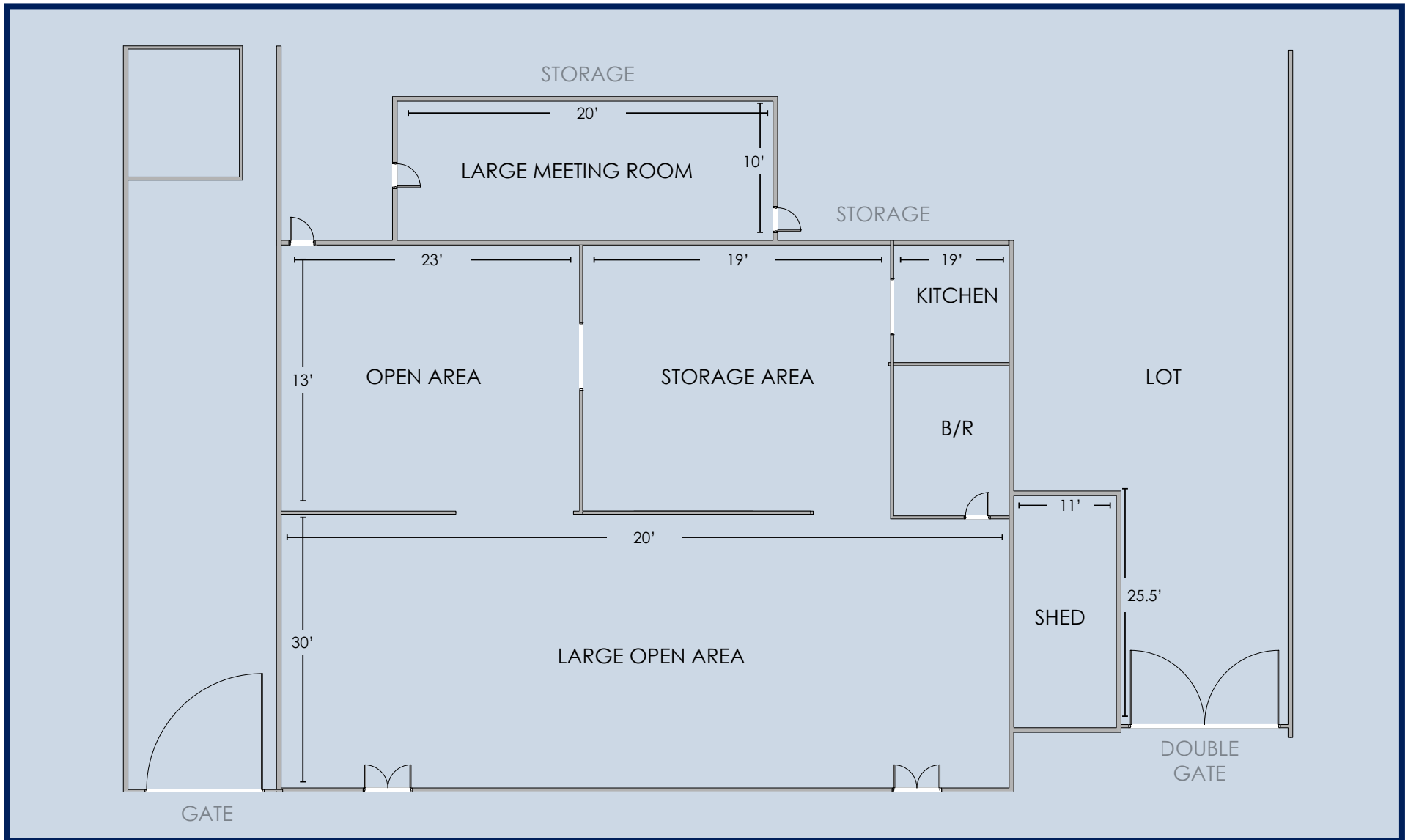
POWER 100V / 200 AMPS, 1-Phase

COOLING Fully Air Conditioned

CLEAR HEIGHT 10' Clear Height

SALE PRICE \$600,000.00





306 S IRONWOOD DR, STE 1 | APACHE JUNCTION, AZ 85120

