

317-333 PARK STREET
TROY, MICHIGAN

INDUSTRIAL FOR LEASE
7,442 Square Feet Available



**SIGNATURE
ASSOCIATES**
KNOW SIGNATURE | KNOW RESULTS

EXCELLENT ACCESS TO MAJOR CORRIDORS



PROPERTY FEATURES

- 7,442 square feet available
- 2,500 square feet office
- 18' clear height
- (1) 12' x 10' grade level door
- Flex office/warehouse space featuring a large office build-out, warehouse area, and mezzanine for added storage or workspace
- Perfect for professional services, light distribution, tech firms, and growing businesses seeking a well-located, move-in-ready flex space
- Lease Rate: \$11.50/sq. ft. Gross



For more information, please contact:

MARVIN PETROUS
(248) 359 0647
mpetrous@signatureassociates.com

ANATOLA SESI
(248) 359 0629
asesi@signatureassociates.com

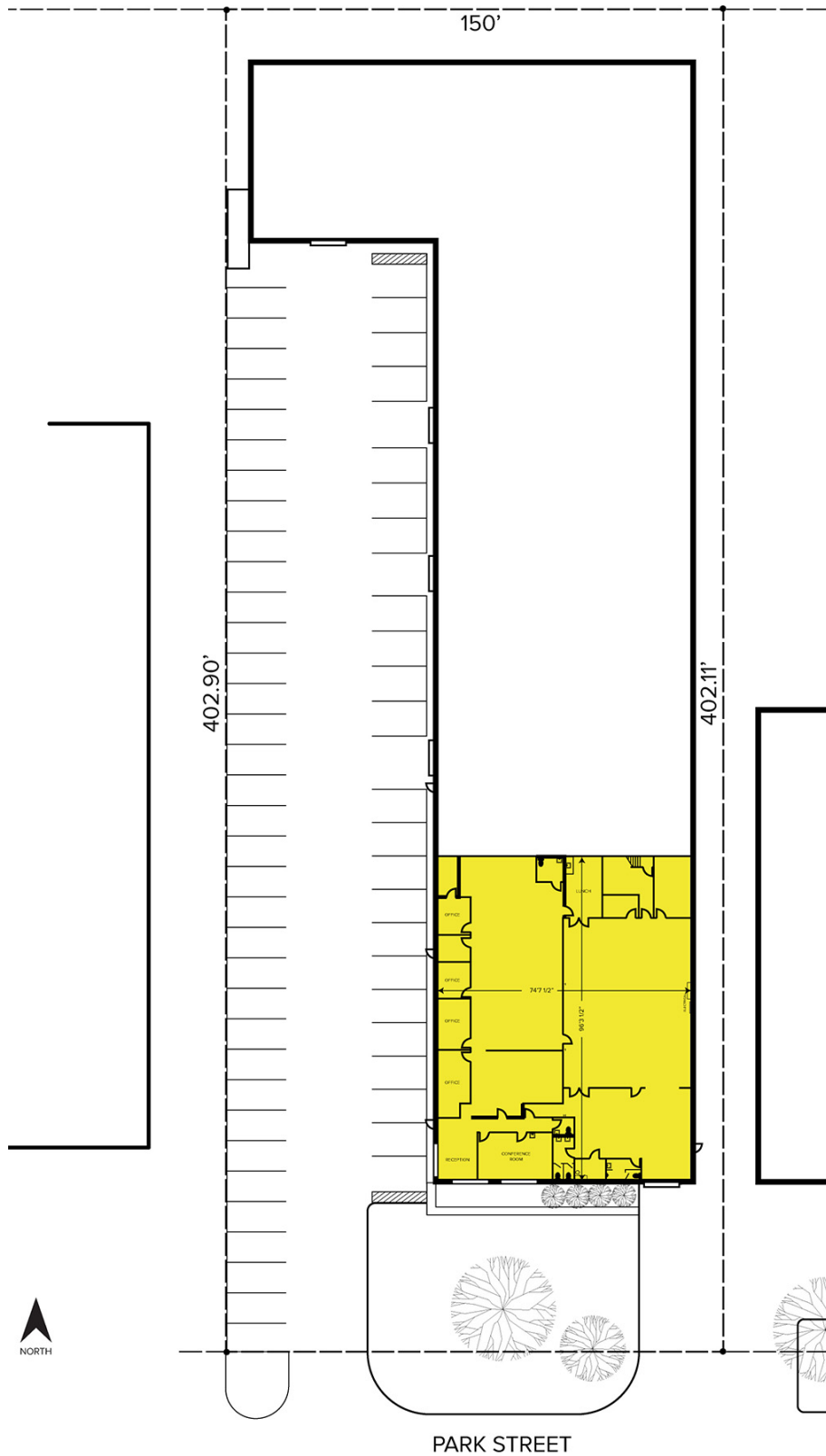
SIGNATURE ASSOCIATES
One Towne Square, Suite 1200
Southfield, MI 48076
www.signatureassociates.com

317 – 333 Park Street - Troy, Michigan

Industrial For Lease

7,442
Square Feet
AVAILABLE

Site Plan



For more information, please contact:

MARVIN PETROUS
(248) 359 0647

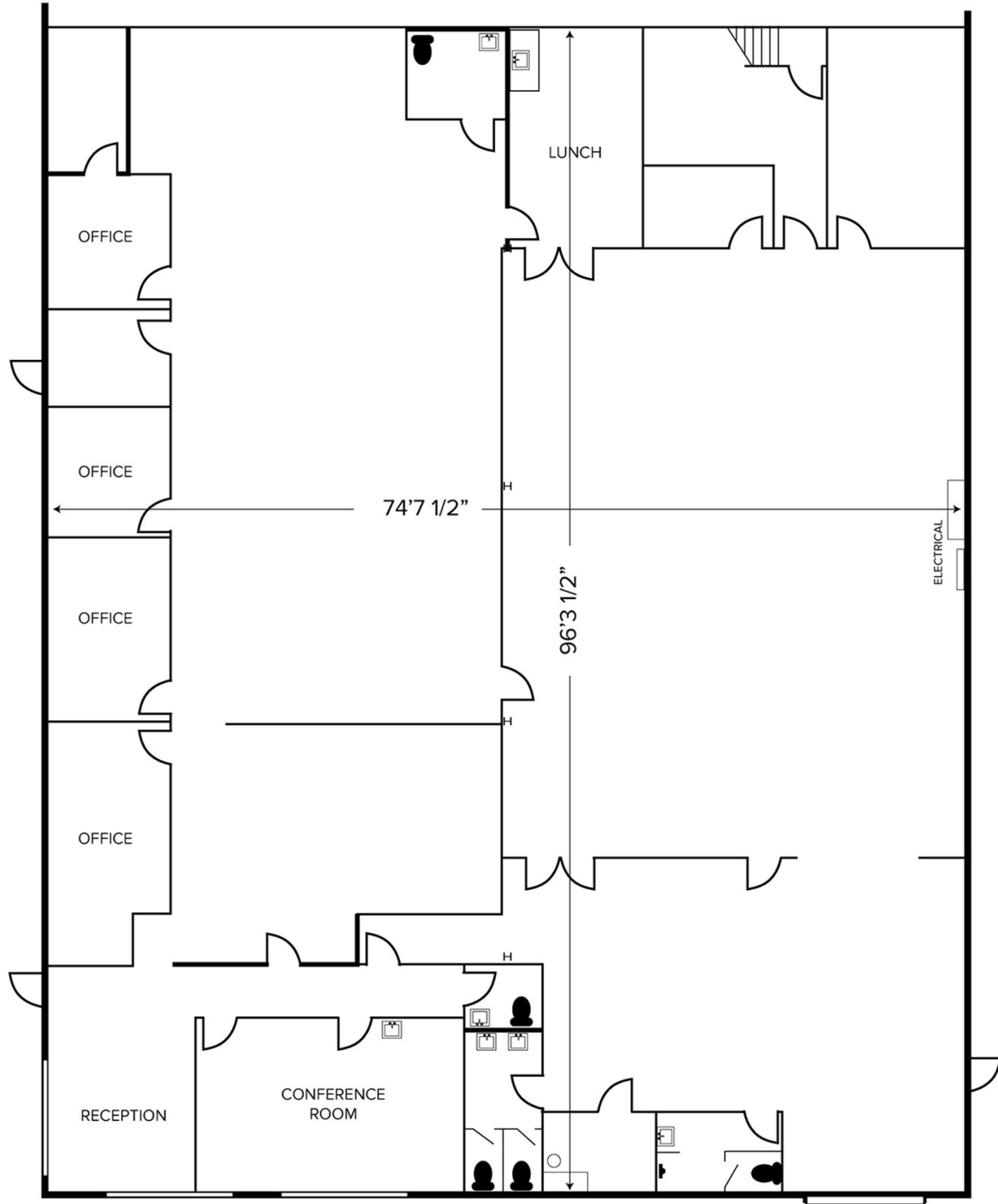
mpetrous@signatureassociates.com

ANATOLA SESI
(248) 359 0629

asesi@signatureassociates.com

SIGNATURE ASSOCIATES
One Towne Square, Suite 1200
Southfield, MI 48076
www.signatureassociates.com

Floor Plan



For more information, please contact:

MARVIN PETROUS
(248) 359 0647
mpetrous@signatureassociates.com

ANATOLA SESI
(248) 359 0629
asesi@signatureassociates.com

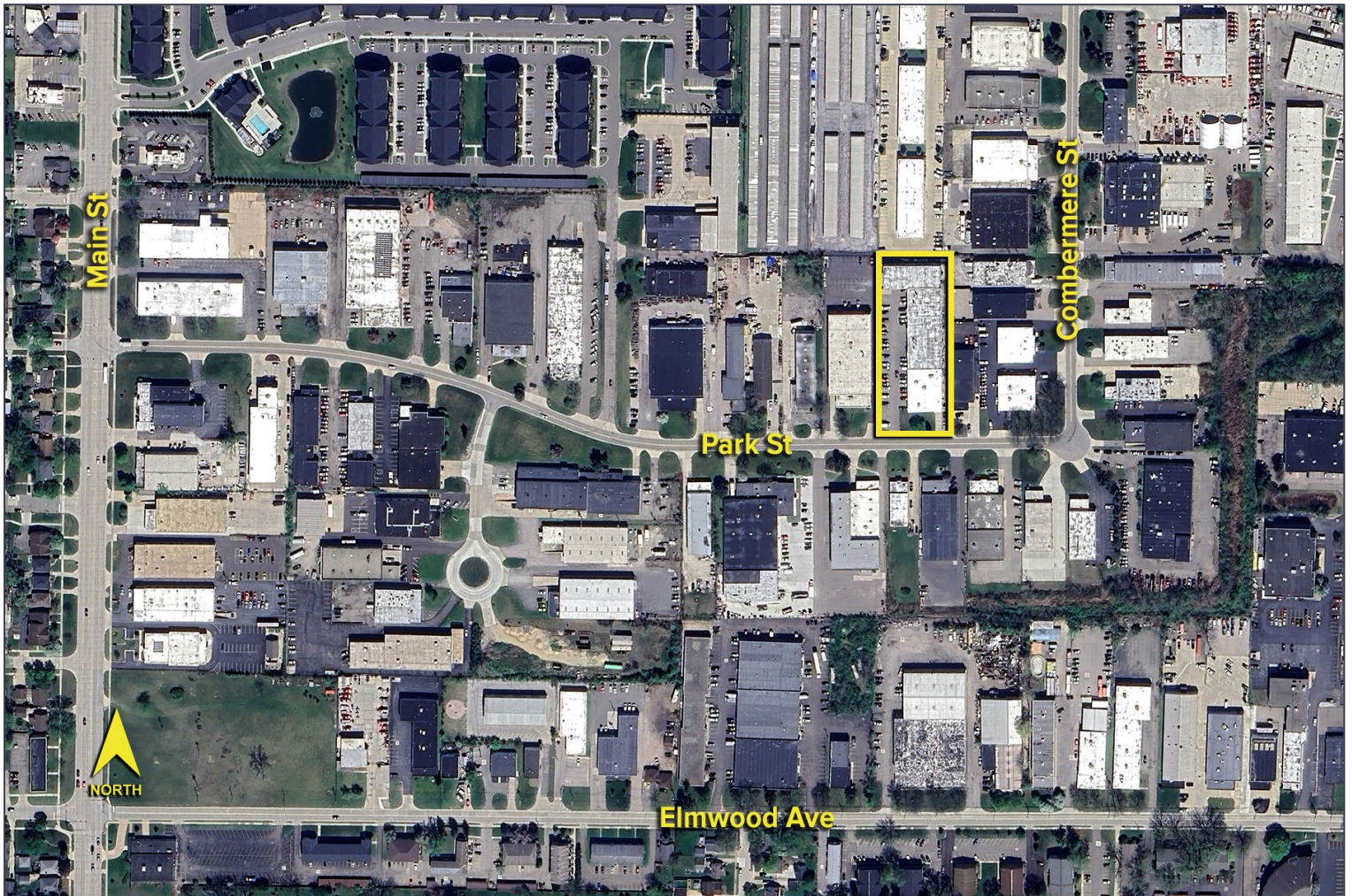
SIGNATURE ASSOCIATES
One Towne Square, Suite 1200
Southfield, MI 48076
www.signatureassociates.com

317 – 333 Park Street - Troy, Michigan

Industrial For Lease

7,442
Square Feet
AVAILABLE

Aerial



For more information, please contact:

MARVIN PETROUS
(248) 359 0647

mpetrous@signatureassociates.com

ANATOLA SESI
(248) 359 0629

asesi@signatureassociates.com

SIGNATURE ASSOCIATES
One Towne Square, Suite 1200
Southfield, MI 48076
www.signatureassociates.com