

FINAL BUILDING PLANS
FOR
LAKE MONROE COMMERCE CENTER
BUILDING A
1101 MONROE ROAD
SANFORD, FLORIDA 32771

OWNER/ DEVELOPER:

TODD PEMBERTON
103 HIGHLINE DRIVE
LONGWOOD, FLORIDA 32750
TELEPHONE (407) 831-6688
E-MAIL: melissa@pembertonattachements.com

ENGINEER:

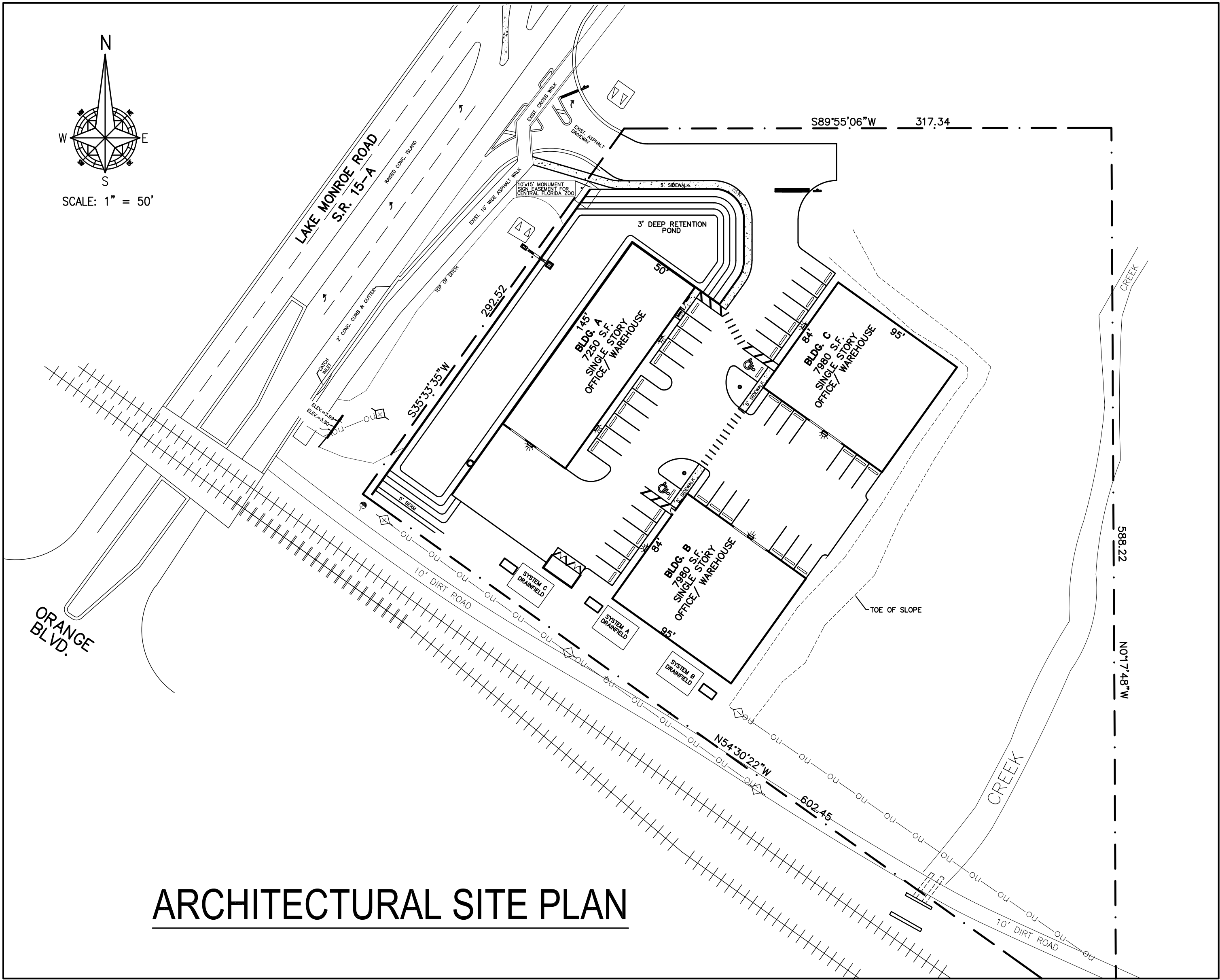
CASTILLO ENGINEERING SERVICES, LLC
2925 WEST S.R. 434 SUITE 111
LONGWOOD, FLORIDA 32779
TELEPHONE: (407) 289-2575
E-MAIL: rick@castillope.com
CONTACT: RICK CASTILLO, P.E.

PROJECT MANAGER:

JHR CONSULTANTS, INC.
478 EAST ALTAMONTE DRIVE, SUITE 162
ALTAMONTE SPRINGS, FLORIDA 32701
TELEPHONE: (407) 262-9176
FAX: (407) 262-9170
E-MAIL: jackreynolds@embarqmail.com
CONTACT: JACK REYNOLDS

SURVEYOR:

SCOTT'S SURVEYING SERVICES, INC.
8 S. HWY. 17-92, SUITE 8-A
DEBARY, FLORIDA
TELEPHONE (386) 668-7332
E-MAIL: s_survey@bellsouth.net
CONTACT: SCOTT BECHIR



ARCHITECTURAL SITE PLAN

APPLICABLE CODES

- 2017 6th ed. FLORIDA BUILDING CODE (BUILDING)
- 2017 6th ed. FLORIDA BUILDING CODE (PLUMBING)
- 2017 6th ed. FLORIDA BUILDING CODE (MECHANICAL)
- 2017 6th ed. FLORIDA BUILDING CODE (ACCESSIBILITY)
- 2017 6th ed. FLORIDA BUILDING CODE (ENERGY CONSERVATION)
- 2017 6th ed. FLORIDA FIRE PREVENTION CODE
- 2014 NATIONAL ELECTRICAL CODE
- ALL APPLICABLE STATE, FEDERAL AND LOCAL CODES & ORDINANCES WILL APPLY

DESIGN CRITERIA

CONSTRUCTION TYPE: TYPE II B, UNPROTECTED, NON FIRE SPRINKLED
SINGLE STORY BUILDING NON COMBUSTIBLE
BUILDING EAVE HEIGHTS: 19'-10" TO 22'-0"
MIXED OCCUPANCY CLASS: BUSINESS (B), STORAGE (S-2)
SINGLE TENANT BUILDING
OCCUPANCY LOAD:
BUSINESS 840/100 = 8 PEOPLE
WAREHOUSE 500 GROSS S.F./ PERSON 6,410/500 = 13 PEOPLE
OCCUPANCY LOAD = 21 PEOPLE

NOTES TO CONTRACTOR:

- THIS IS A BUILDER'S SET OF DRAWINGS PREPARED TO A LEVEL OF COMPLETION SATISFACTORY FOR BUILDING PERMIT PURPOSES AND CODE COMPLIANCE ONLY. THESE PLANS ARE ADEQUATE FOR CONSTRUCTION BY A LICENSED KNOWLEDGEABLE AND EXPERIENCED CONTRACTOR FAMILIAR WITH THIS TYPE OF CONSTRUCTION AND 2017 FLORIDA BUILDING CODE, 6TH EDITION.
- THE GENERAL CONTRACTOR AND HIS SUB CONTRACTORS SHALL CAREFULLY STUDY AND COMPARE CITY OF SANFORD APPROVED CONSTRUCTION DOCUMENTS FURNISHED BY THE ENGINEER AND THE OWNER PRIOR TO START OF CONSTRUCTION. ANY ERRORS, INCONSISTENCIES OR OMISSIONS DISCOVERED DURING PLAN REVIEW OR CONSTRUCTION SHALL BE REPORTED TO THE DESIGN PROFESSIONAL IMMEDIATELY. ANY FAILURE TO REPORT SUCH DISCOVERIES SHALL BE THE CONTRACTOR'S LIABILITY.

INDEX OF DRAWINGS

BUILDING PLANS

| | | |
|--------|---|--------------------------|
| CS | 1 | COVER SHEET |
| S-1 | 2 | FOUNDATION PLAN |
| A-1 | 3 | LIFE SAFETY & FLOOR PLAN |
| A-2 | 4 | ELEVATIONS |
| MECH-1 | 5 | ELECTRIC AND PLUMBING |
| MECH-2 | 6 | HVAC |

CITY STAMPS

COVER SHEET

LAKE MONROE COMMERCE CENTER
1101 MONROE ROAD
SANFORD, FLORIDA 32771

JHR CONSULTANTS, INC.
312 FOREST AVE
ALTAMONTE SPRINGS, FL 32701
TELEPHONE: (407) 262-9176
FAX: (407) 262-9170
E-MAIL: jackreynolds@embarqmail.com



CASTILLO ENGINEERING
SERVICES, LLC
COA 2845
2925 WEST S.R. 434, SUITE 111
LONGWOOD, FLORIDA 32779
TELEPHONE: 407-289-2575

DATE: 07/09/19

SCALE: NTS

DRAWN: JHR

SHEET NAME:

CS

SHEET: 1 OF 6