

38200-38210 VAN DYKE AVE  
STERLING HEIGHTS, MICHIGAN

RETAIL FOR SALE OR LEASE  
12,000 Square Feet Available



**SIGNATURE  
ASSOCIATES**  
KNOW SIGNATURE | KNOW RESULTS



## PROPERTY FEATURES

- 12,000 square feet available
- Excellent opportunity to own on Van Dyke Ave
- Ample parking and large monument sign
- Perfect for showroom with some private office
- Contact broker for more details
- Lease Rate: Contact Broker
- Sale Price: \$1,450,000 (\$120.83/sq. ft.)



For more information, please contact:

**RICHARD PIFER**  
(248) 799 3158  
rpifer@signatureassociates.com

**PETER VANDERKAAY**  
(248) 359 3837  
pvanderkaay@signatureassociates.com

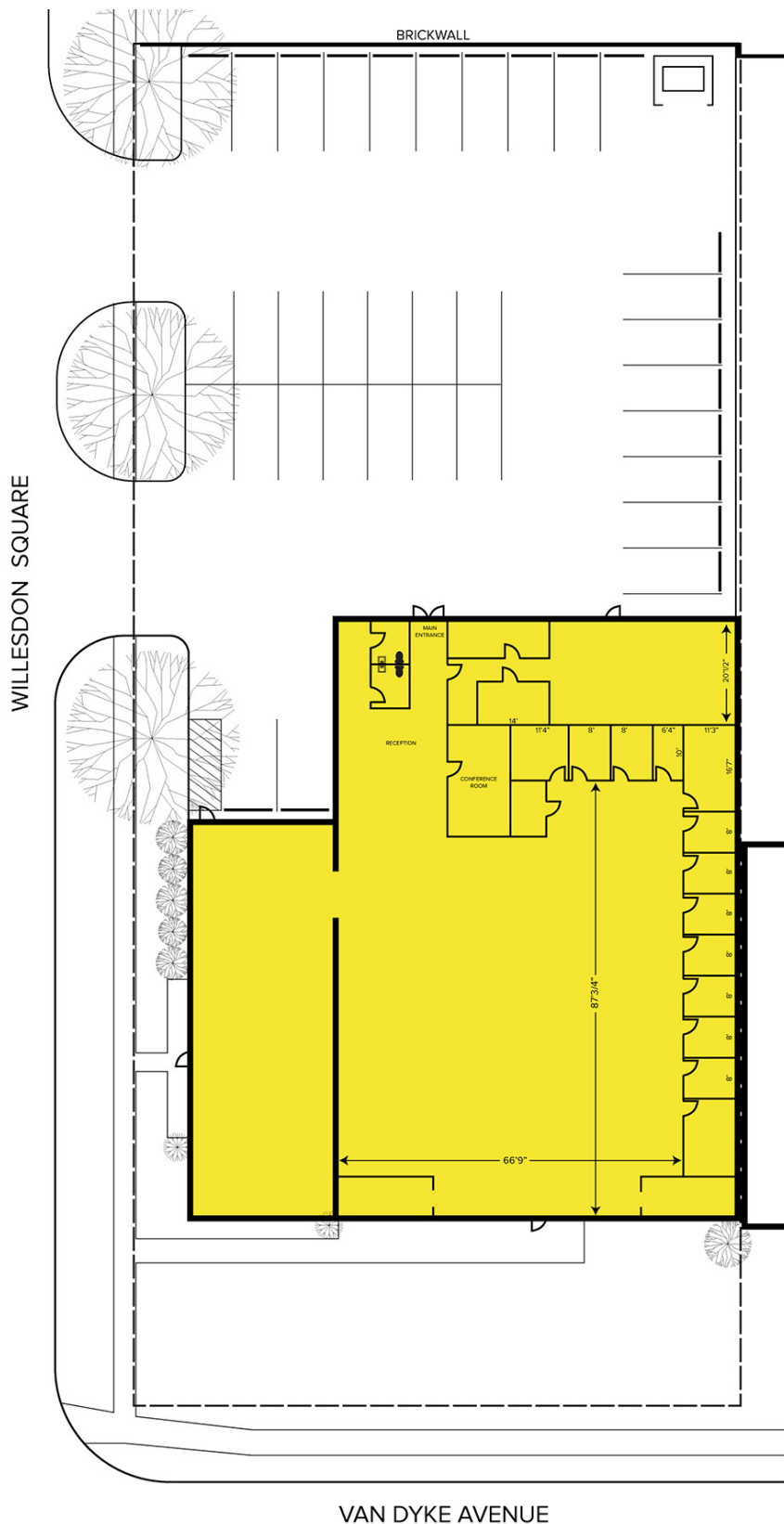
**SIGNATURE ASSOCIATES**  
One Towne Square, Suite 1200  
Southfield, MI 48076  
www.signatureassociates.com

# 38200-38210 Van Dyke Ave. – Sterling Heights, MI

Retail For Sale or Lease

12,000  
Square Feet  
AVAILABLE

## Site Plan



For more information, please contact:

**RICHARD PIFER**

(248) 799 3158

[rpifer@signatureassociates.com](mailto:rpifer@signatureassociates.com)

**PETER VANDERKAAY**

(248) 359 3837

[pvanderkaay@signatureassociates.com](mailto:pvanderkaay@signatureassociates.com)

**SIGNATURE ASSOCIATES**

One Towne Square, Suite 1200

Southfield, MI 48076

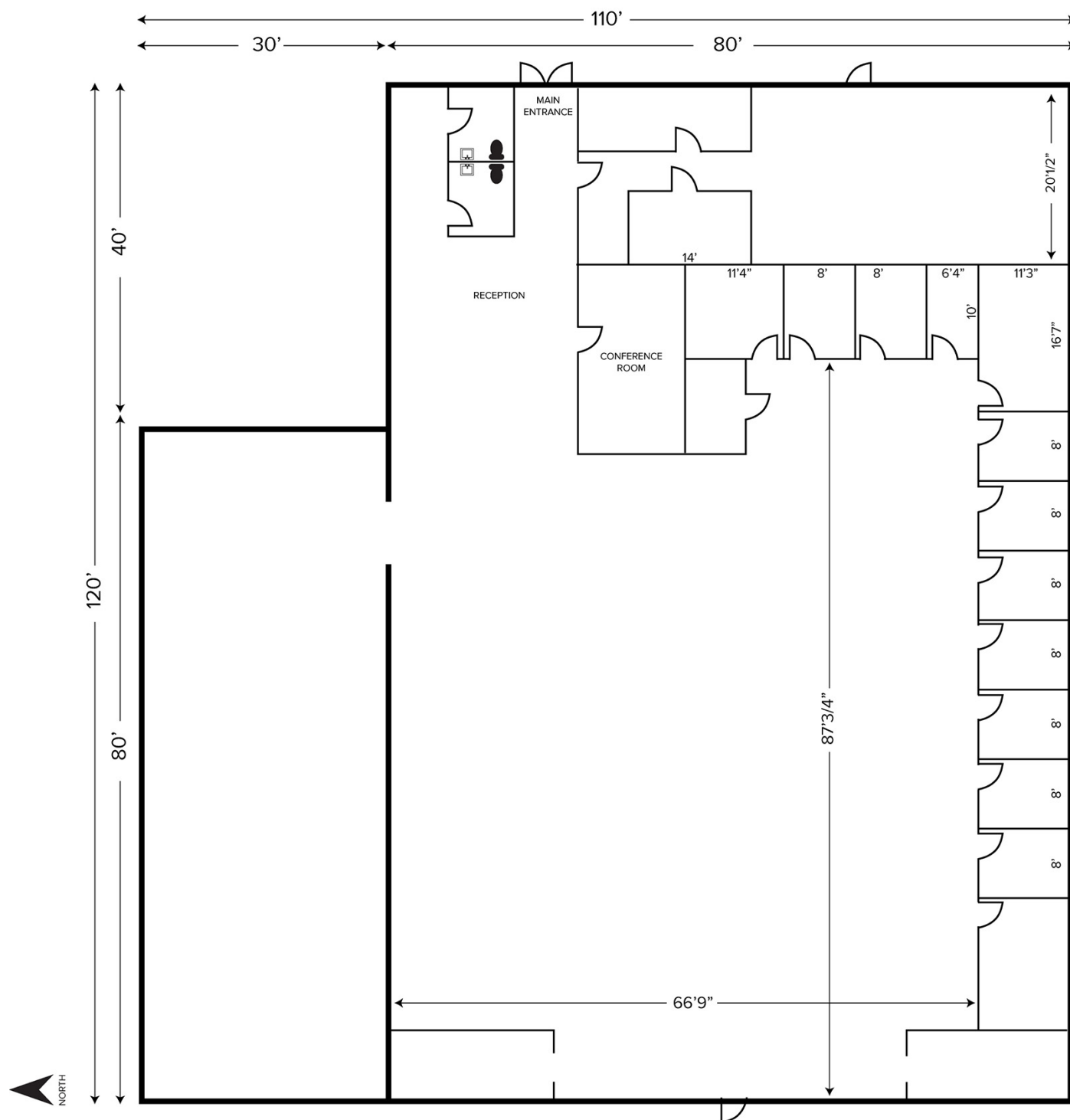
[www.signatureassociates.com](http://www.signatureassociates.com)

# 38200-38210 Van Dyke Ave. – Sterling Heights, MI

Retail For Sale or Lease

12,000  
Square Feet  
AVAILABLE

## Floor Plan



For more information, please contact:

**RICHARD PIFER**  
(248) 799 3158  
rpifer@signatureassociates.com

**PETER VANDERKAAY**  
(248) 359 3837  
pvanderkaay@signatureassociates.com

**SIGNATURE ASSOCIATES**  
One Towne Square, Suite 1200  
Southfield, MI 48076  
www.signatureassociates.com



# 38200-38210 Van Dyke Ave. – Sterling Heights, MI

Retail For Sale or Lease

12,000  
Square Feet  
AVAILABLE

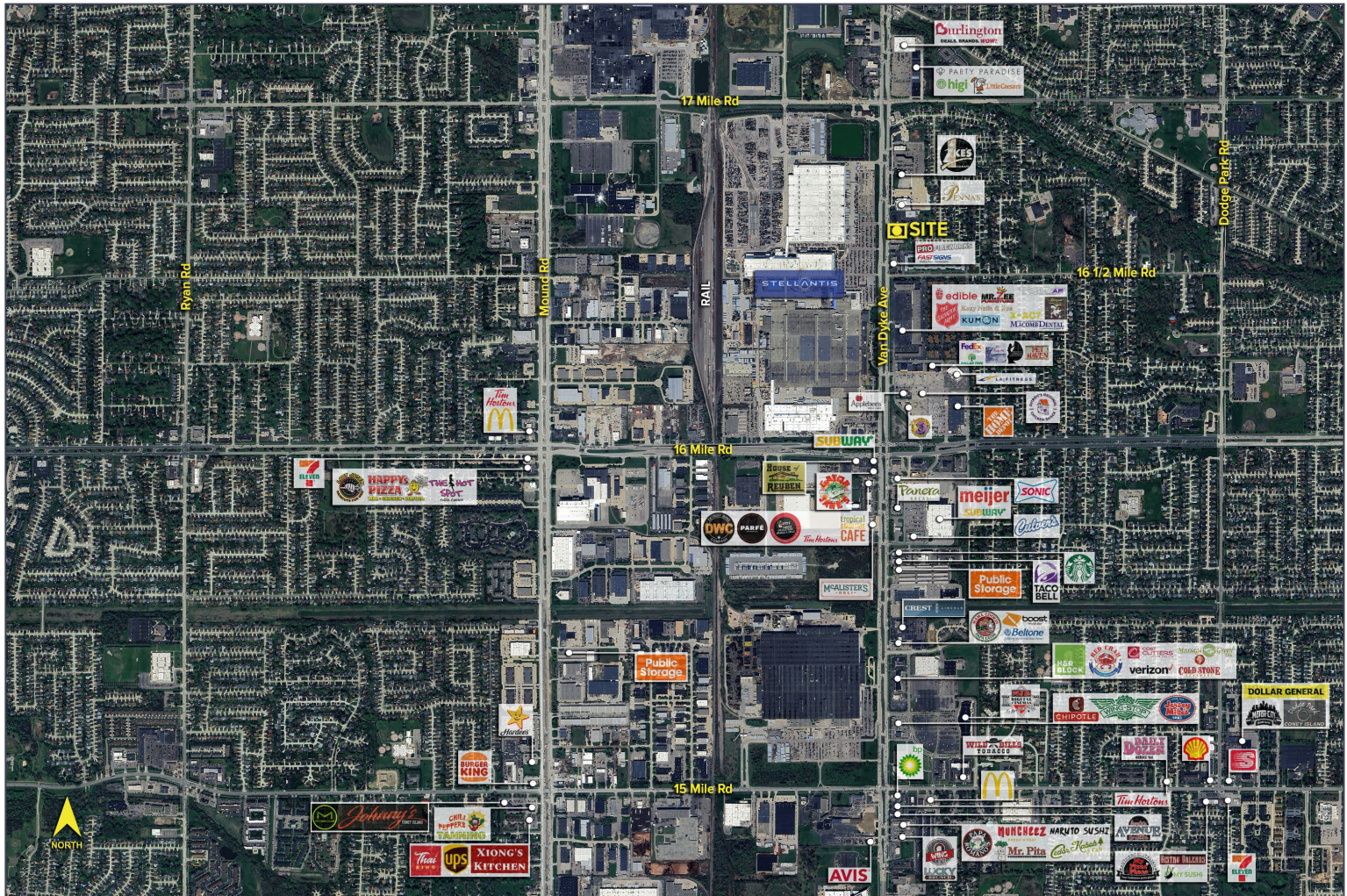


## DEMOGRAPHICS

	POPULATION	MED. HH INCOME
1 MILE	7,269	\$81,098
3 MILE	95,245	\$81,109
5 MILE	279,349	\$82,807

## TRAFFIC COUNTS (TWO-WAY)

83,696	Van Dyke Ave. N of 17 Mile Rd.
83,187	Van Dyke Ave. S of 17 Mile Rd.
16,415	17 Mile Rd. E of Van Dyke Ave.
26,074	17 Mile Rd. W of Van Dyke Ave.



For more information, please contact:

**RICHARD PIFER**

(248) 799 3158

[rpifer@signatureassociates.com](mailto:rpifer@signatureassociates.com)

**PETER VANDERKAAY**

(248) 359 3837

[pvanderkaay@signatureassociates.com](mailto:pvanderkaay@signatureassociates.com)

**SIGNATURE ASSOCIATES**

One Towne Square, Suite 1200

Southfield, MI 48076

[www.signatureassociates.com](http://www.signatureassociates.com)

Information is subject to verification and no liability for errors or omissions is assumed. Price is subject to change and listing withdrawal.