

2111 E. Ivanhoe Pl.

East Side - Milwaukee, WI 53202

JOSEPH
PROPERTY DEVELOPMENT LLC

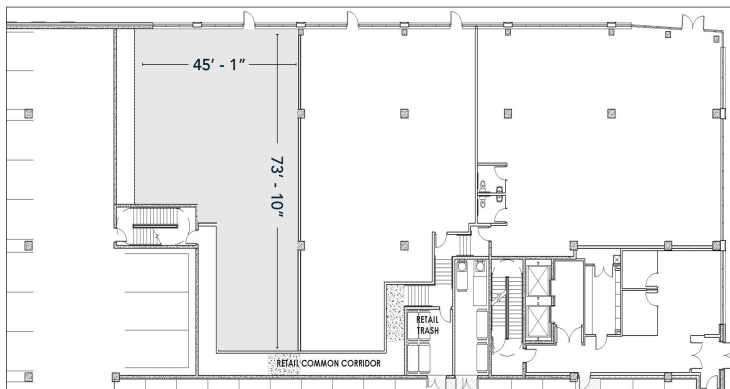


PROPERTY ATTRIBUTES

- » Spacious storefront retail, commercial, and/or office space.
- » Prominent location in the heart of the East Side.
- » One block from the Oriental Theatre and Columbia St. Mary's Hospital, and a few blocks from the University of Wisconsin Milwaukee Campus and Lake Michigan.
- » Building tenants include: Spectrum, Kwench Juice Cafe, and FedEx Office.
- » Area retailers include: Urban Outfitters, YogaSix, Beans & Barley, and Whole Foods.
- » Landlord may build to suit and/or provide Tenant Improvement package.
- » Flexible Terms.
- » Available immediately.

RETAIL STOREFRONT | 2,850 +/- RSF

BUILDING: Contour on Prospect is a new modern luxury mixed-use apartment building located in the heart of the East Side which offers excellent retail and restaurant options. This commercial space features an open concept with very tall ceilings.



CURRENT CONDITION: Grey box condition with concrete subfloor, electrical panel, storefront glass and sprinkler system already installed. Contemporary commercial storefront. Ready for tenant-specific finishes.



FOR MORE INFORMATION, CONTACT:

Nathan Bernstein | 414.988.7883

nathan@josephpropertydevelopment.com |