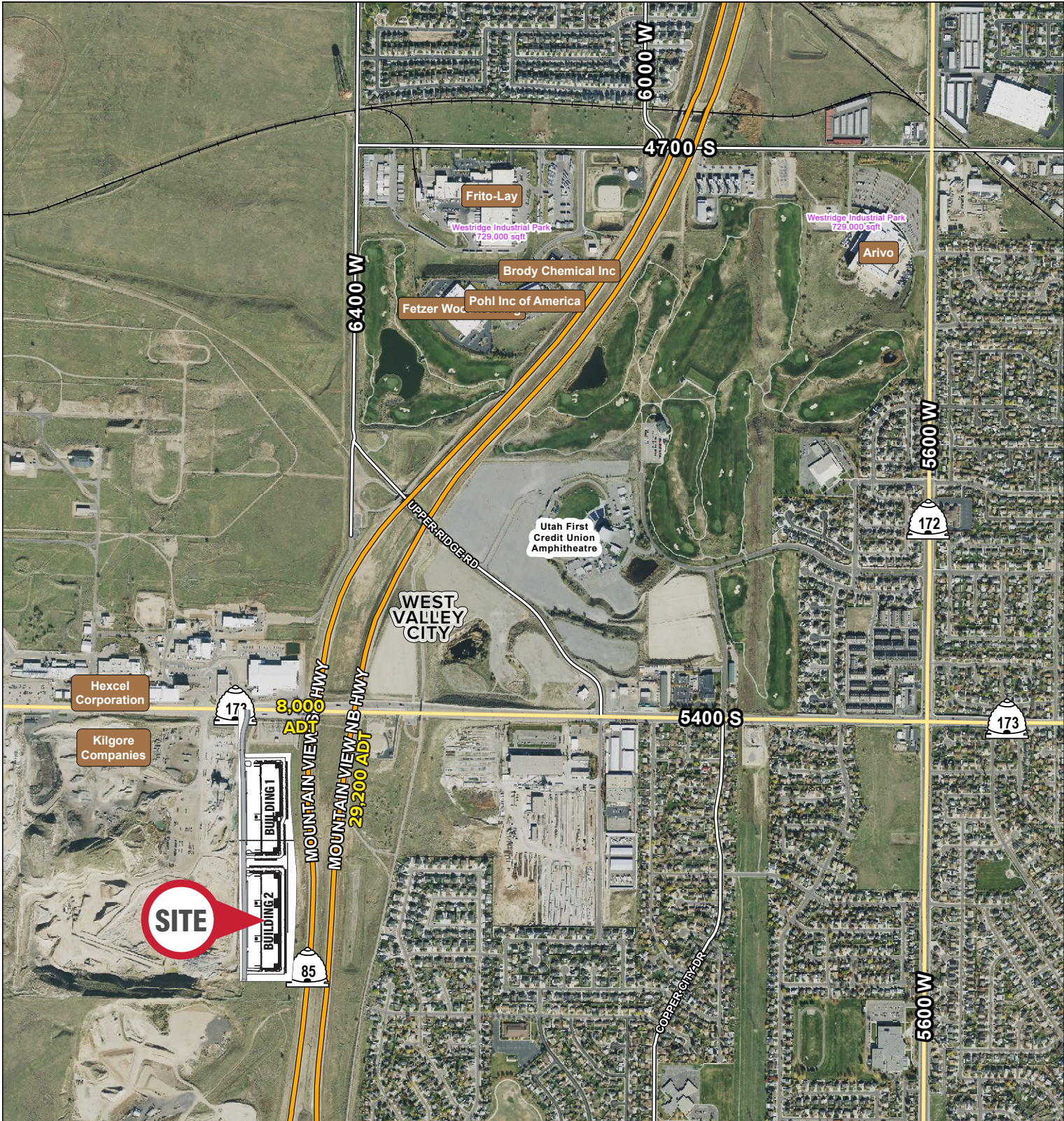


MOCA MOUNTAIN VIEW BUSINESS PARK

6507 West 5400 South | West Valley City, UT 84118



Contact

SKYLER PETERSON, SIOR
Executive Vice President
m 801.656.7354
speterson@legendcommercial.com

TRE BOURDEAUX, SIOR
Vice President
m 801.824.0397
tbourdeaux@legendcommercial.com

PARKER TAGGART
Senior Associate
m 801.928.1815
ptaggart@legendcommercial.com



MOCA MOUNTAIN VIEW BUSINESS PARK

6507 West 5400 South | West Valley City, UT 84118

Scan For 3D Walkthrough

Property Highlights

- Total Available: 147,791 SF
- Divisible: 18,480-147,791 SF
- Office: BTS Class A Creative Office Space
- Eight (8) 14'x16' Grade Level Doors
- Forty-Six (46) 9'x10' Dock Doors
- Twenty-Six (26) - 45K LB Rated Air Bag Dock Levelers With 20" Steele Faced Bumper
- Dock Curtains Have MAX 100 Vinyl
- TS150 Dock Doors With R-14 Insulation Value. 3" Tracks With Heavy Duty Rollers, Track Guards On Every Overhead Door
- Clear Height: 32'
- 7" Concrete Slab Thickness
- Power: 3000 Amp 480/277 V | 3-Phase | 4-Wire (Expandable To 6000 Amp)
- Sixteen (16) Gas Forced Heaters
- Column Spacing: 56'x52'6"
- Speed Bay: 60'
- Building Depth: 165'
- Truck Court: 125'
- Truck Apron: 60'
- ESFR Sprinkled
- Roof: 60 Mil TPO Roof With R-30 Insulation & Solar Provision Installed In The Gear
- Galvanized Ceilings And Painted Walls For Ambient Lighting
- 279 Parking Stalls
- Construction Type: Precast Concrete Tilt 2" Insulated Panels
- Belt FM Global Compliant
- Project Acreage: 26.81 Acres
- Zoning: M - Manufacturing
- High-Image Corporate Business Park Environment
- Completion Date: August 2025
- Access: Easy Access To Mountain View Corridor (5400 South)

Contact

SKYLER PETERSON, SIOR
Executive Vice President
m 801.656.7354
speterson@legendcommercial.com

TRE BOURDEAUX, SIOR
Vice President
m 801.824.0397
tbourdeaux@legendcommercial.com

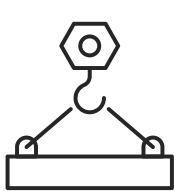
PARKER TAGGART
Senior Associate
m 801.928.1815
ptaggart@legendcommercial.com



© Legend Commercial. All rights reserved. All information contained herein is from sources deemed reliable; however, no representation or warranty is made to the accuracy thereof.

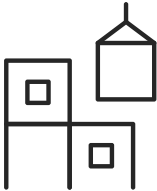
MOCA MOUNTAIN VIEW BUSINESS PARK

6507 West 5400 South | West Valley City, UT 84118



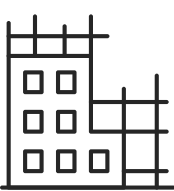
Concrete Slab

7" Thick



Roof

60 Mil TPO Roof
With R-30 Insulation
& Solar Provision
Installed In The Gear



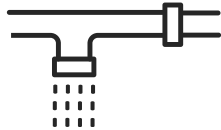
Construction Type

Precast Concrete
Tilt 2" Insulated
Panels



Power

3000 Amp Expandable
to 6000 Amp 480/277 V
| 3-Phase | 4-Wire



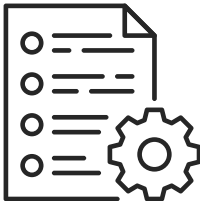
Sprinkled

ESFR



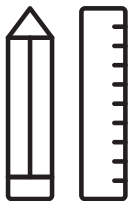
Belt FM

Global compliant



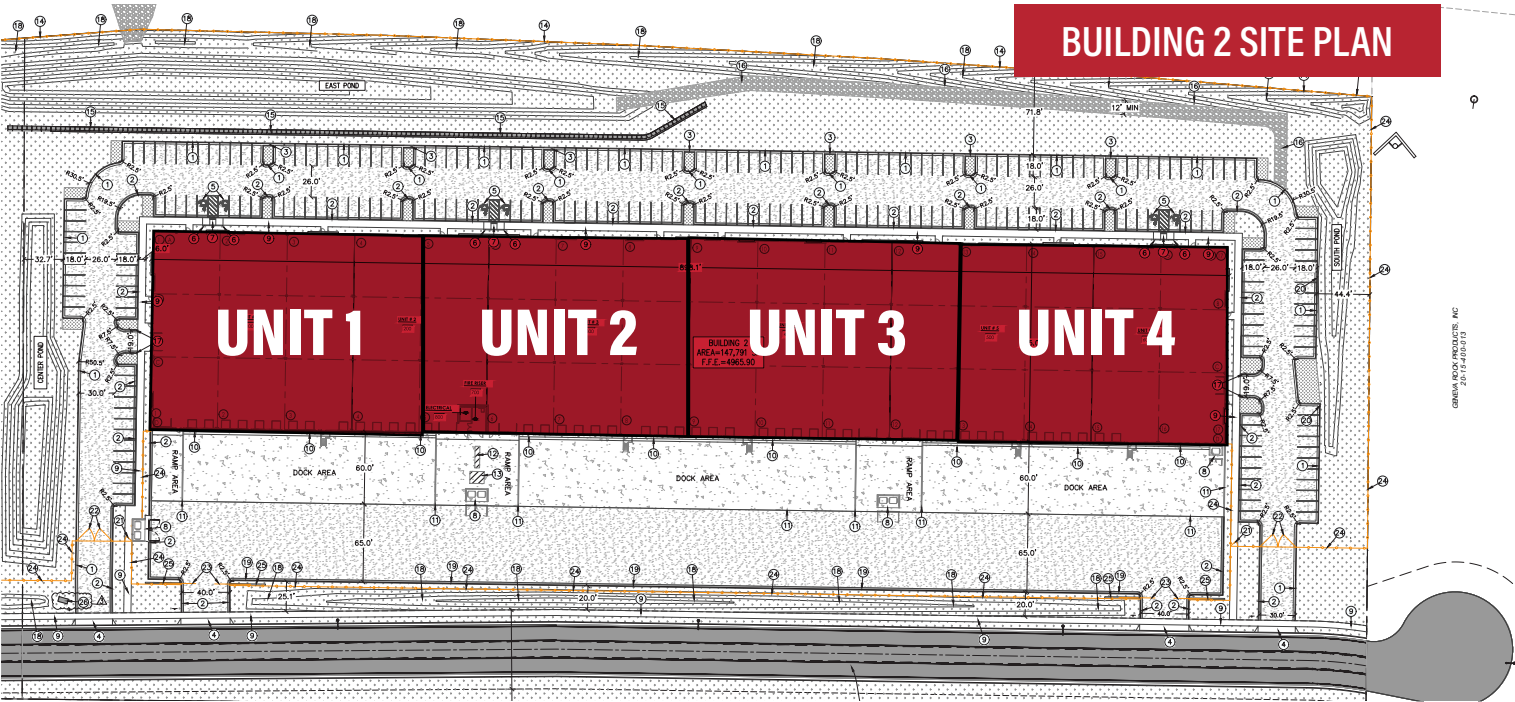
Zoning

M-Manufacturing

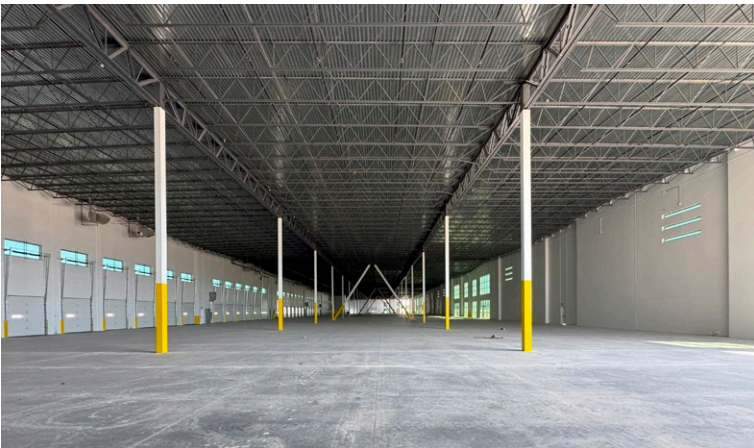


Clear Height

32'



Unit #	SF
100	36,947
200	36,947
300	36,947
400	36,947



Contact

SKYLER PETERSON, SIOR

Executive Vice President

m 801.656.7354

speterson@legendcommercial.com

TRE BOURDEAUX, SIOR

Vice President

m 801.824.0397

tbourdeaux@legendcommercial.com

PARKER TAGGART

Senior Associate

m 801.928.1815

ptaggart@legendcommercial.com

801.930.6750 | www.legendcommercial.com

2180 S 1300 E, Suite 240 | Salt Lake City, UT 84106

Contact

SKYLER PETERSON, SIOR

Executive Vice President

m 801.656.7354

speterson@legendcommercial.com

TRE BOURDEAUX, SIOR

Vice President

m 801.824.0397

tbourdeaux@legendcommercial.com

PARKER TAGGART

Senior Associate

m 801.928.1815

ptaggart@legendcommercial.com

801.930.6750 | www.legendcommercial.com

2180 S 1300 E, Suite 240 | Salt Lake City, UT 84106