



# SOUTH PARK GROUP

[www.southparkgroup.com](http://www.southparkgroup.com)



## FOR LEASE

### CREATIVE / PSYCHOTHERAPY OFFICE

714 N. La Brea Avenue, Suite 250

Los Angeles, California 90038

Unique, creative office with high ceilings and concrete floors and views over La Brea. Located near the La Brea and Melrose intersection.

#### **JACK RAVAN**

Tel. 323.782.1270

E. [jackravan@southparkgroup.com](mailto:jackravan@southparkgroup.com)

No. 00890189

#### **AVAILABLE SPACE**

**Size:** Approximately 320 rentable sqft

**Rate:** \$3.65 per sqft, Modified Gross

**Parking:** Ample onsite spaces

SOUTH PARK GROUP | 8322 Beverly Blvd., Suite 301 | Los Angeles, CA 90048

This information has been furnished by sources that we deem reliable, but for which we assume no liability. The information contained herein is given, in confidence, with the understanding that all negotiations pertaining to this property be handled through the submitting office. All measurements are approximate.

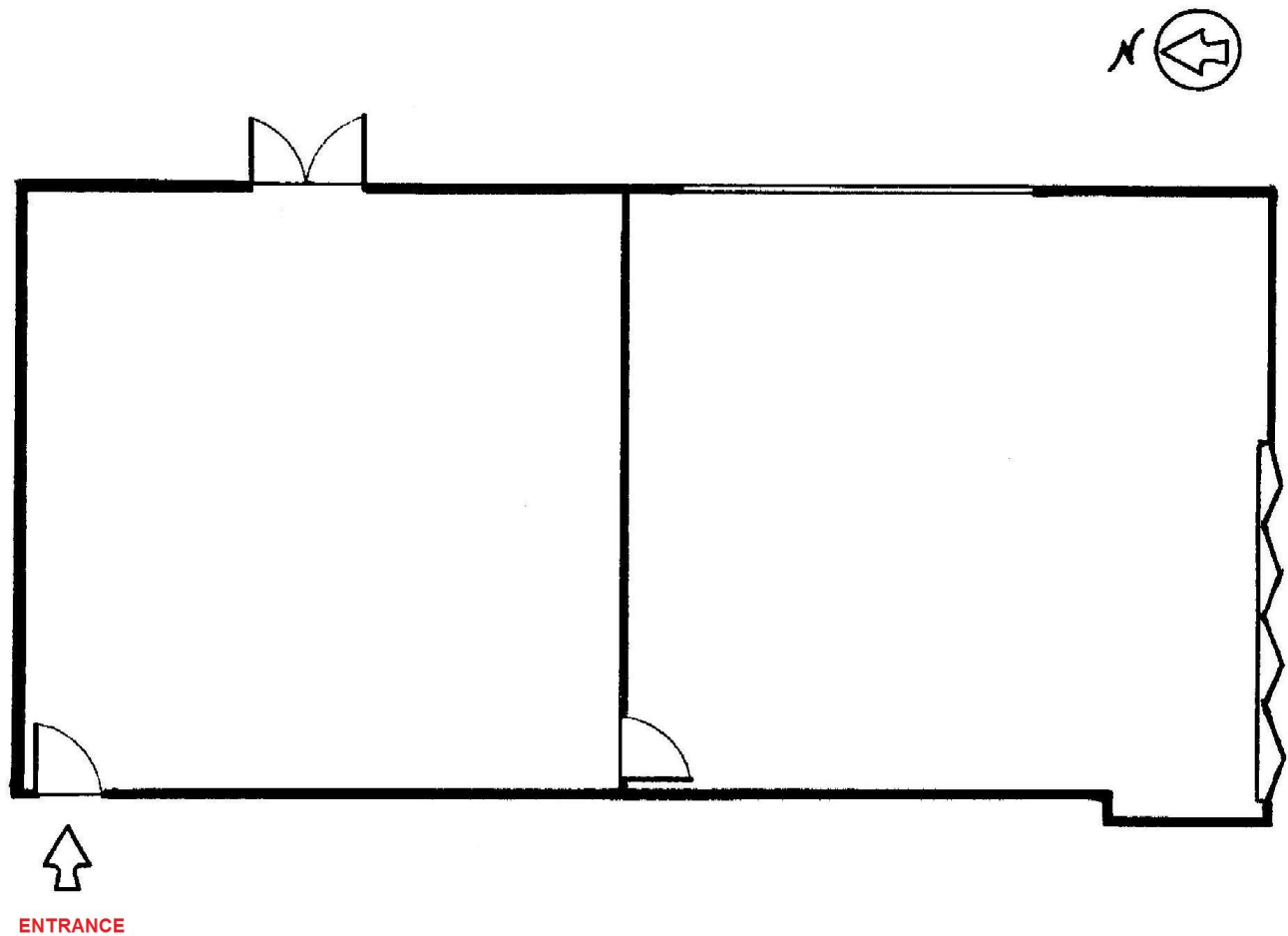


# SOUTH PARK GROUP

[www.southparkgroup.com](http://www.southparkgroup.com)

## FLOOR PLAN

714 N. La Brea Avenue, Suite 250, Los Angeles, California 90038



Not Drawn to Scale

**SOUTH PARK GROUP | 8322 Beverly Blvd., Suite 301 | Los Angeles, CA 90048**

This information has been furnished by sources that we deem reliable, but for which we assume no liability. The information contained herein is given, in confidence, with the understanding that all negotiations pertaining to this property be handled through the submitting office. All measurements are approximate.



# SOUTH PARK GROUP

[www.southparkgroup.com](http://www.southparkgroup.com)

## FOR LEASE

714 N. La Brea Ave., Suite 250, Los Angeles, California 90038



**SOUTH PARK GROUP | 8322 Beverly Blvd., Suite 301 | Los Angeles, CA 90048**

This information has been furnished by sources that we deem reliable, but for which we assume no liability. The information contained herein is given, in confidence, with the understanding that all negotiations pertaining to this property be handled through the submitting office. All measurements are approximate.