



±3,185 SF
FOR SUBLEASE

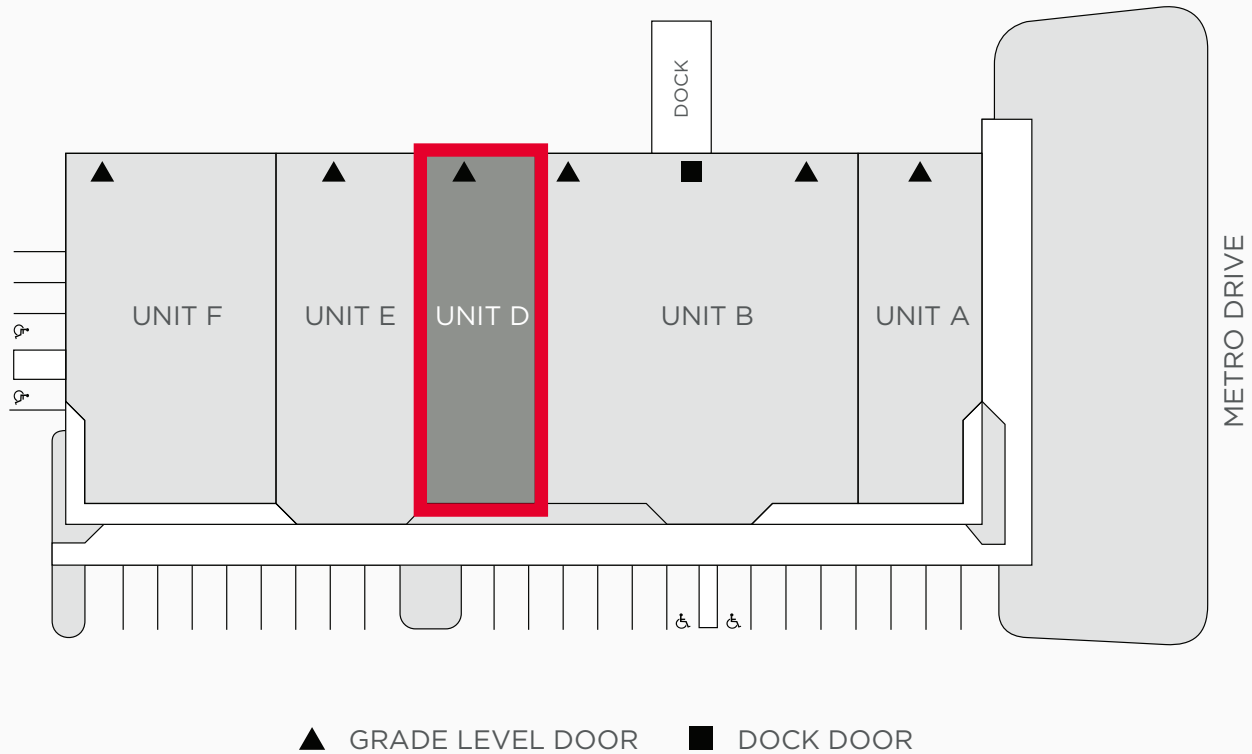
Thru June 30, 2028

3727 Metro Drive
Stockton, CA



STEVE DUNN
Senior Director
+1 209 992 0953
steve.dunn@cushwake.com

3727 METRO DRIVE

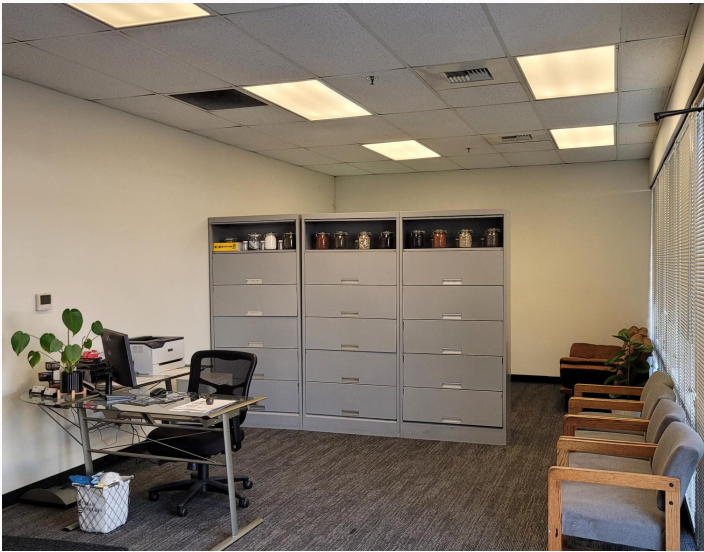


Property Highlights

BUILDING SIZE	±26,464 SF	POWER	110 / 208 volt
AVAILABLE	Unit D ±3,185 SF	FIRE SUPPRESSION	0.33 / 3,000
SUBLEASE TERM	Thru 06/30/2028	ZONING	I-L, Limited Industrial (City of Stockton)
GRADE LEVEL DOORS	One (1)	YEAR BUILT	1990
CLEAR HEIGHT	14'	ASKING RATE	Contact Broker
LIGHTING	LED		

3727 METRO DRIVE

Property Photos





3727 Metro Drive



**For more information,
you may contact**

STEVE DUNN
Senior Director
+1 209 992 0953
steve.dunn@cushwake.com

©2024 Cushman & Wakefield. All rights reserved. The information contained in this communication is strictly confidential. This information has been obtained from sources believed to be reliable but has not been verified. NO WARRANTY OR REPRESENTATION, EXPRESS OR IMPLIED, IS MADE AS TO THE CONDITION OF THE PROPERTY (OR PROPERTIES) REFERENCED HEREIN OR AS TO THE ACCURACY OR COMPLETENESS OF THE INFORMATION CONTAINED HEREIN, AND SAME IS SUBMITTED SUBJECT TO ERRORS, OMISSIONS, CHANGE OF PRICE, RENTAL OR OTHER CONDITIONS, WITHDRAWAL WITHOUT NOTICE, AND TO ANY SPECIAL LISTING CONDITIONS IMPOSED BY THE PROPERTY OWNER(S). ANY PROJECTIONS, OPINIONS, OR ESTIMATES ARE SUBJECT TO UNCERTAINTY AND DO NOT SIGNIFY CURRENT OR FUTURE PROPERTY PERFORMANCE.