

1,300 SF | INDUSTRIAL | CHATSWORTH

1,300
SQUARE FEET

\$1.75/mo
APPROX RENT/SF

\$2,275/mo
BASE RENT

(818) 717-0200
www.tscorealestate.com

PROPERTY ADDRESS

**9860 OWENSMOUTH AVE, UNIT 3
CHATSWORTH, CA 91311**

COMMERCIAL TYPE: **Multi-Tenant Industrial**

LEASE TYPE: **Gross** AVAILABLE: **8/1/2025**

DESCRIPTION

**Unit Size (approximate): 1,300 square feet Industrial
Space WAREHOUSE | ONE OFFICE**

Restroom: One (sink & toilet)
Power: 100-Amp 3-Phase Service
Parking: (3) Spaces
Overhead Door: Ground Level about 10'x10'
Evaporative Cooler & Space Heater in Warehouse
Warehouse Clearance is 12'

Tenant pays for its own electricity, gas (heating), telephone,
internet. Water & Trash reimbursed through CAMs
Please no woodworkers, welders, marijuana or automotive use

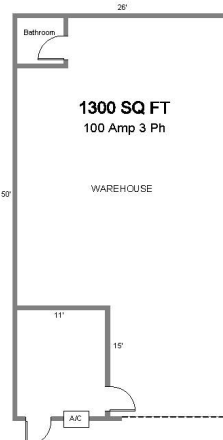
* Subject to Credit and Financial Review.
* Monthly Estimated CAM Fee: \$120.00
* Term: 1 to 3 Years
* Security Deposit Amount will be determined upon review of
credit report, bank statements and/or Business Financial
Statements

AMENITIES

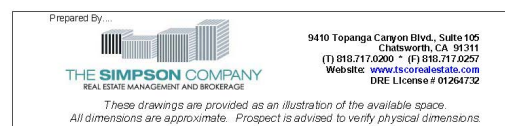
• 10' x 10' Overhead Door

RENTAL TERMS

Monthly Base Rent	\$2,275.00
Security Deposit	Based on Financials
Estimated CAM FEE	\$120.00



Unit 3
9860 Owensmouth Avenue
Chatsworth, CA 91311



9860-3 VSD - 7/10/2014



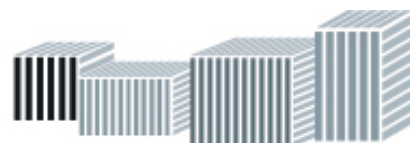
AVAILABLE
INDUSTRIAL WAREHOUSE
818-717-0200
JEREMY WACKER

THE SIMPSON COMPANY
REAL ESTATE MANAGEMENT AND BROKERAGE
SPECIALIZING IN MULTI-TENANT INDUSTRIAL PROPERTIES
tscorealestate.com

FOR LEASING INFORMATION
JEREMY WACKER 818-717-0200 x17

JWacker@tsco-re.com

DRE License 01986677



THE SIMPSON COMPANY
REAL ESTATE MANAGEMENT AND BROKERAGE
CORP DRE LICENSE 01264732