

Nalimb

11620  
RED RUN  
BOULEVARD

REISTERSTOWN, MD 21136



Lineage®





## VALUE

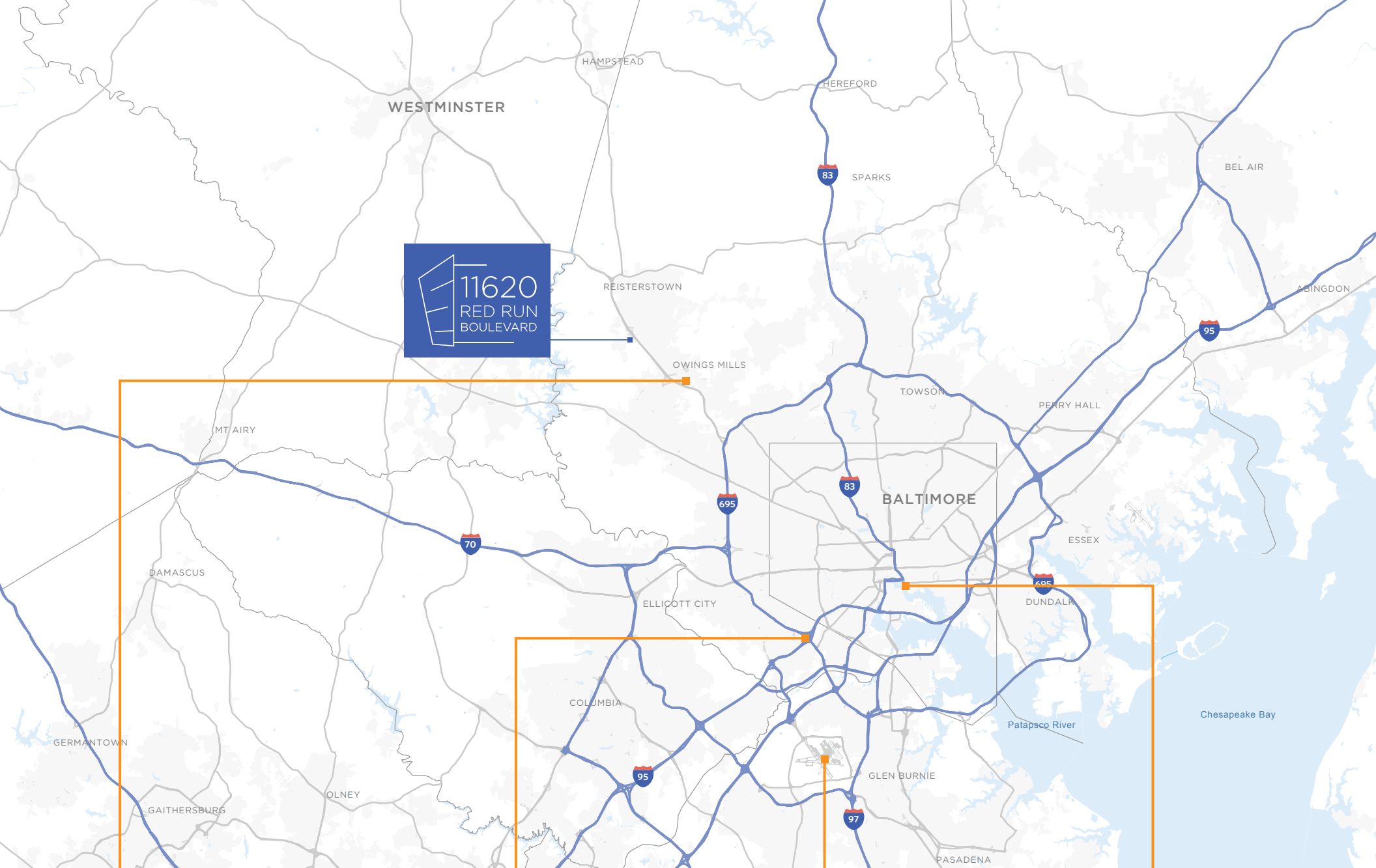
Choose the most competitive pricing

## PROPERTY HIGHLIGHTS

- Turn-key Class A office building
- 2-story office building totalling  $\pm 40,000$  SF
- Built in 2011
- Plug-n-Play
- Furniture by Herman Miller included
- Parking Ratio: 4/1,000 SF
- Available: First Floor - 3,000-20,000 SF
- Lease Rate: \$23.00/SF, Full Service
- Access: 7 minutes to I-795 and 9 minutes to I-695
- Minutes from Owings Mills and Reisterstown
- On-site Property Management
- Additional storage or fitness area within tenant suite







11620  
RED RUN  
BOULEVARD



**4 MILES**  
to Owings Mills Metro



**17 MILES**  
to I-95



**24 MILES**  
to BWI Airport



**23 MILES**  
to Inner Harbor



# LOCATION

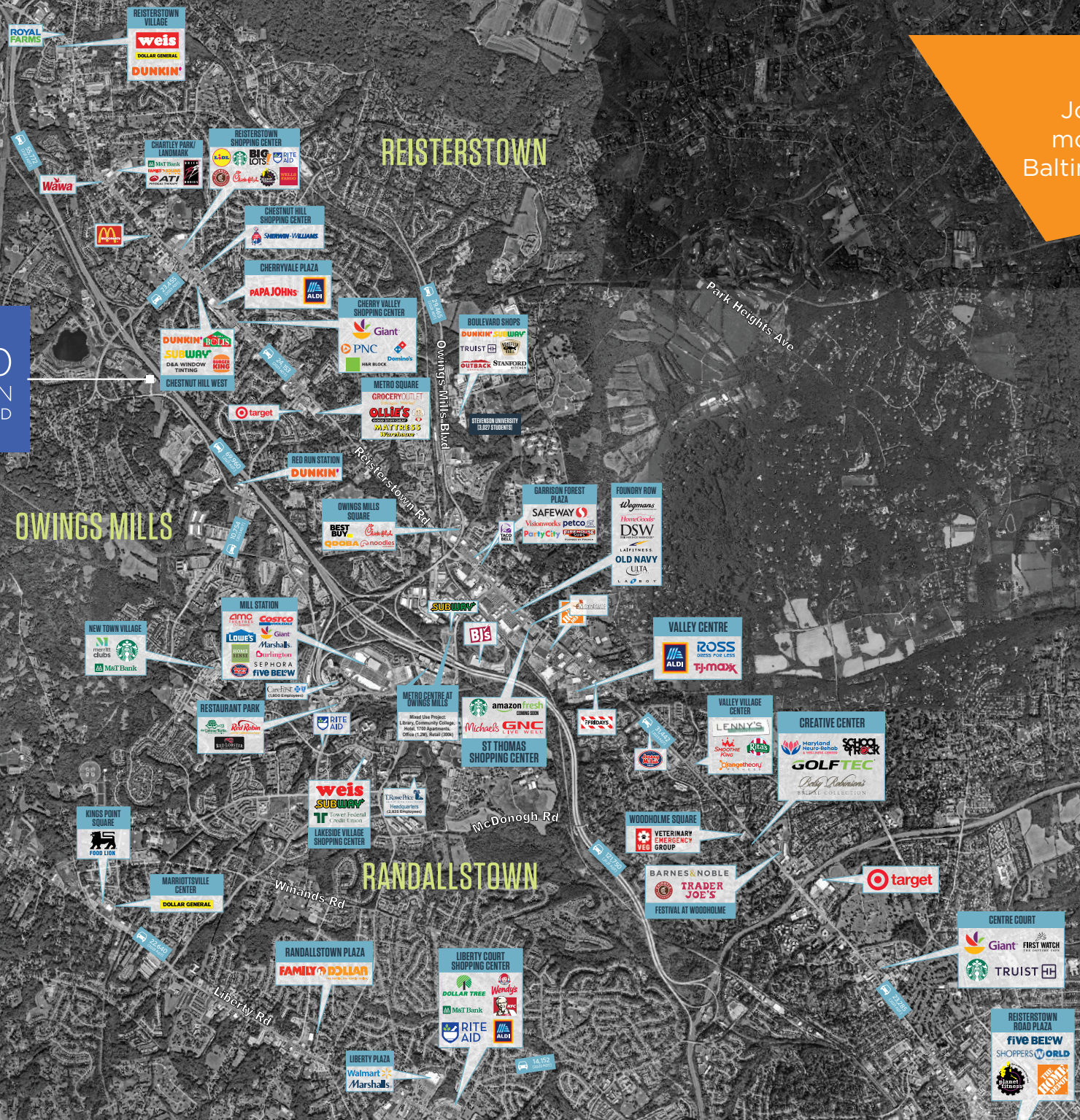
Join one of the most accessible Baltimore suburbs

11620 RED RUN BOULEVARD

## REISTERSTOWN

## OWINGS MILLS

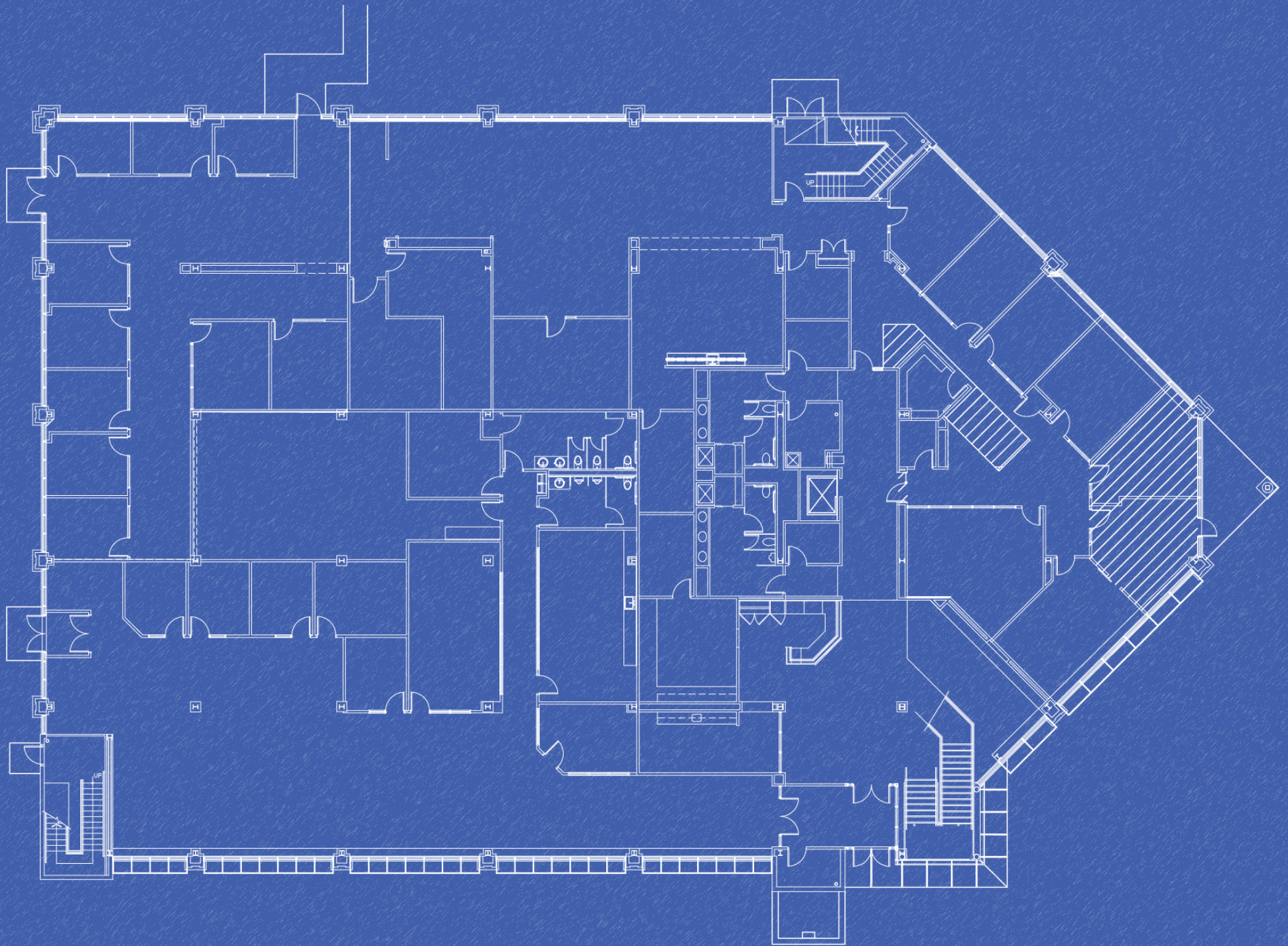
## RANDALLSTOWN











**FLOOR PLAN**





For more information, please contact:

**CHRIS WRIGHT**

[cwright@klnb.com](mailto:cwright@klnb.com)

443-914-2600

**MIKE MULL**

[mmull@gardnercr.com](mailto:mmull@gardnercr.com)

443-585-3999

100 West Road | Suite 505 | Towson, MD | 21204

While we have no reason to doubt the accuracy of any of the information supplied, we cannot, and do not, guarantee its accuracy. All information should be independently verified prior to a purchase or lease of the property. We are not responsible for errors, omissions, misuse, or misinterpretation of information contained herein and make no warranty of any kind, express or implied, with respect to the property or any other matters.