



**Keegan & Coppin**  
COMPANY, INC.

FOR LEASE

**5679 REDWOOD DRIVE, UNITS A & B  
ROHNERT PARK, CA 94928**

**Warehouse**



Go beyond broker.

REPRESENTED BY:

**MIKE THOMASON, SREA**  
**LIC # 01330583 (707) 664-1400, EXT 309**  
**MTHOMASON@KEEGANCOPPIN.COM**



# WAREHOUSE SPACE FOR LEASE



5679 REDWOOD DRIVE  
UNITS A & B

**WAREHOUSE SPACE  
FOR LEASE**

## PROPERTY INFORMATION

### HIGHLIGHTS

- 2,500 +/- Sq Ft
- Reception Area
- Two (2) Separate Restrooms
- Bonus Mezzanine Space
- Warehouse has 17' Clear Height
- Two (2) Grade Level Roll-Up Doors
- 400 Amp/3 Phase Power
- Great Space for Distribution or Light Manufacturing
- Restrooms Recently Redone
- Interior Freshly Painted

### LEASE TERMS

#### RATE

\$1.35 PSF

#### TERMS

Gross + PG&E  
3-5 year lease term preferred

#### PARKING

On-site

## SUBJECT SPACE DESCRIPTION

2,500+/- Sq Ft

Attractive concrete building that is fully sprinklered, has two grade level doors, two separate restrooms, reception area, bonus mezzanine space, and 400 amp/phase 3 power. **Automotive uses acceptable.**

Available now.

Keegan & Coppin Co., Inc.  
1201 N McDowell Boulevard  
Petaluma, CA 94954  
www.keegancoppin.com  
(707) 664-1400

The above information, while not guaranteed, has been secured from sources we believe to be reliable. Submitted subject to error, change or withdrawal. An interested party should verify the status of the property and the information herein.

REPRESENTED BY:

**MIKE THOMASON, SREA**  
LIC # 01330583 (707) 664-1400, EXT 309  
MTHOMASON@KEEGANCOPPIN.COM



# WAREHOUSE SPACE FOR LEASE

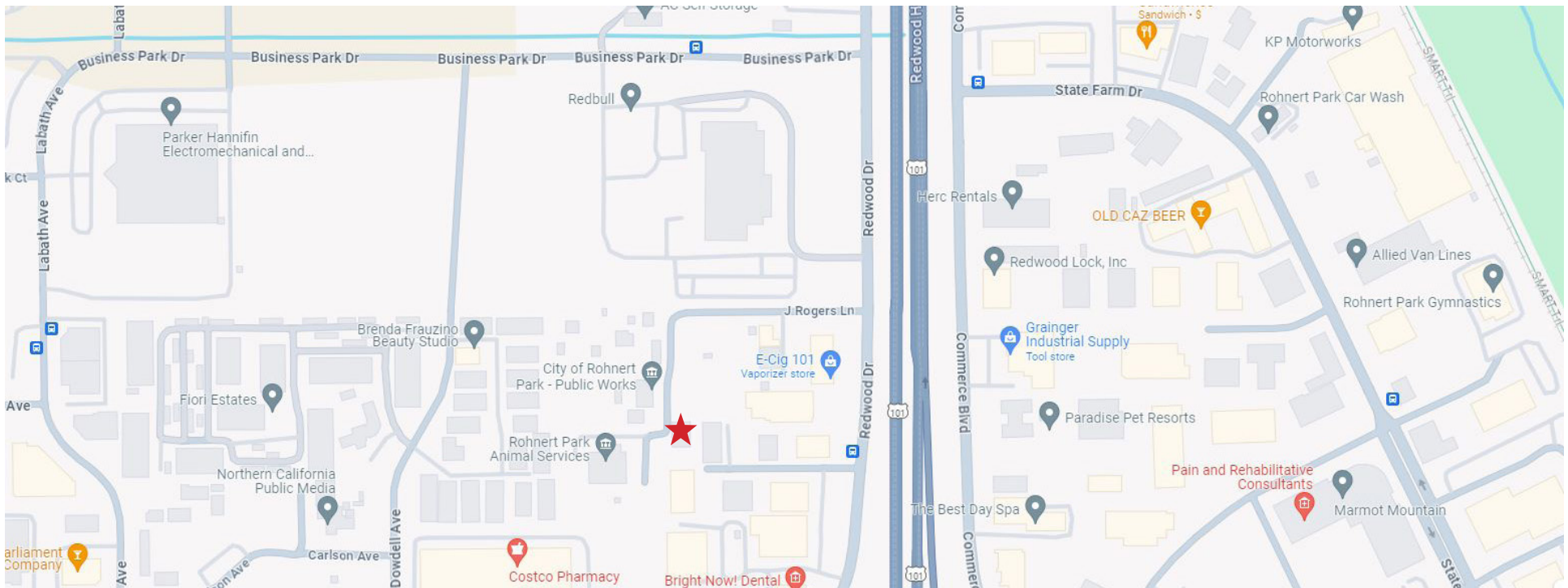


5679 REDWOOD DRIVE  
UNITS A & B

**WAREHOUSE SPACE  
FOR LEASE**

## DESCRIPTION OF AREA

Property is the 4th building of a four-building complex on one parcel. Located on Redwood Drive in Rohnert Park, which is a major Thoroughfare. Close to numerous retail opportunities and easy access to Highway 101.



Keegan & Coppin Co., Inc.  
1201 N McDowell Boulevard  
Petaluma, CA 94954  
[www.keegancoppin.com](http://www.keegancoppin.com)  
(707) 664-1400

The above information, while not guaranteed, has been secured from sources we believe to be reliable. Submitted subject to error, change or withdrawal. An interested party should verify the status of the property and the information herein.

REPRESENTED BY:

**MIKE THOMASON, SREA**  
LIC # 01330583 (707) 664-1400, EXT 309  
[MTHOMASON@KEEGANCOPPIN.COM](mailto:MTHOMASON@KEEGANCOPPIN.COM)

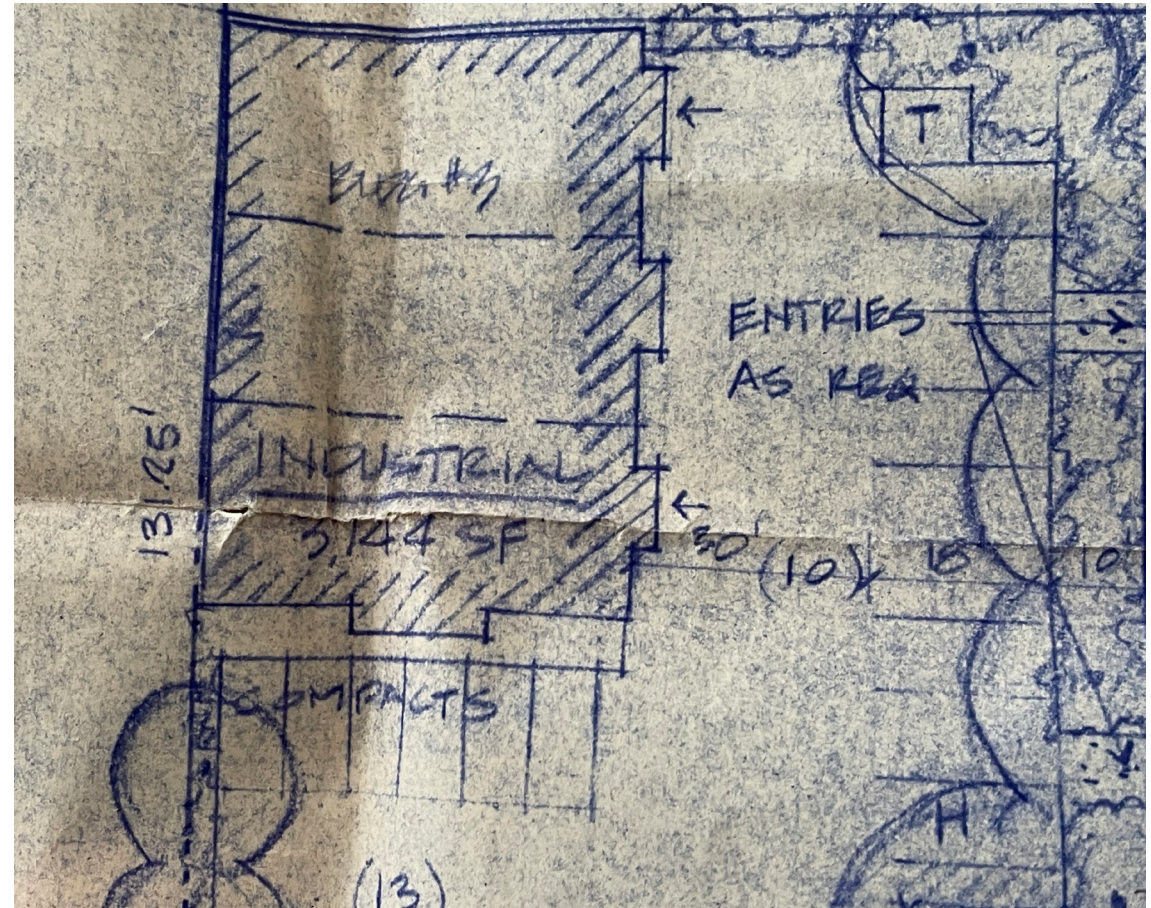
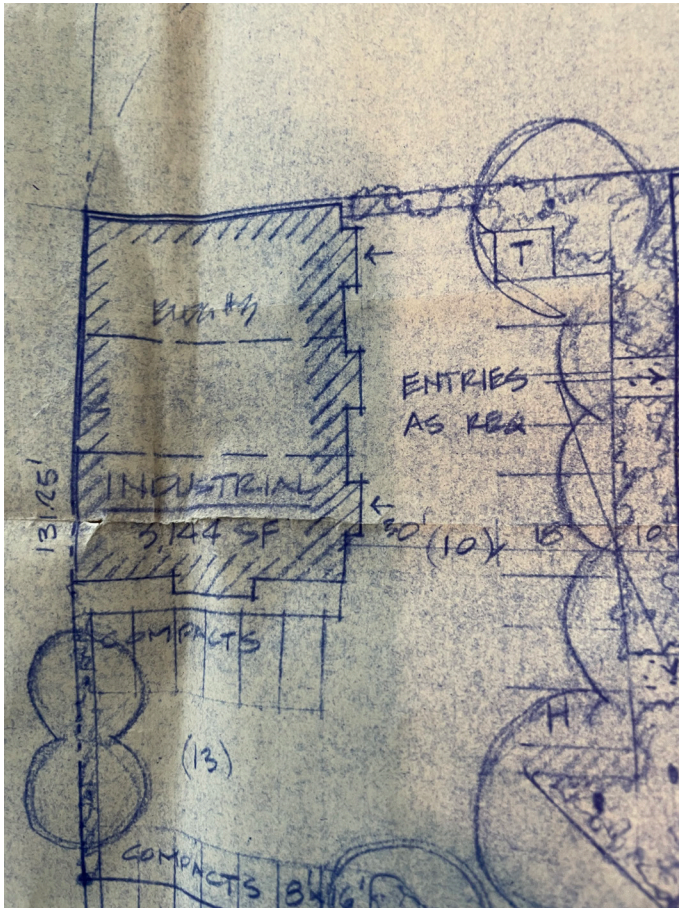


# 5679 REDWOOD DRIVE, UNITS A & B FLOOR PLAN



5679 REDWOOD DRIVE  
UNITS A & B

WAREHOUSE SPACE  
FOR LEASE



Keegan & Coppin Co., Inc.  
1201 N McDowell Boulevard  
Petaluma, CA 94954  
www.keegancoppin.com  
(707) 664-1400

The above information, while not guaranteed, has been secured from sources we believe to be reliable. Submitted subject to error, change or withdrawal. An interested party should verify the status of the property and the information herein.

REPRESENTED BY:

MIKE THOMASON, SREA  
LIC # 01330583 (707) 664-1400, EXT 309  
MTHOMASON@KEEGANCOPPIN.COM

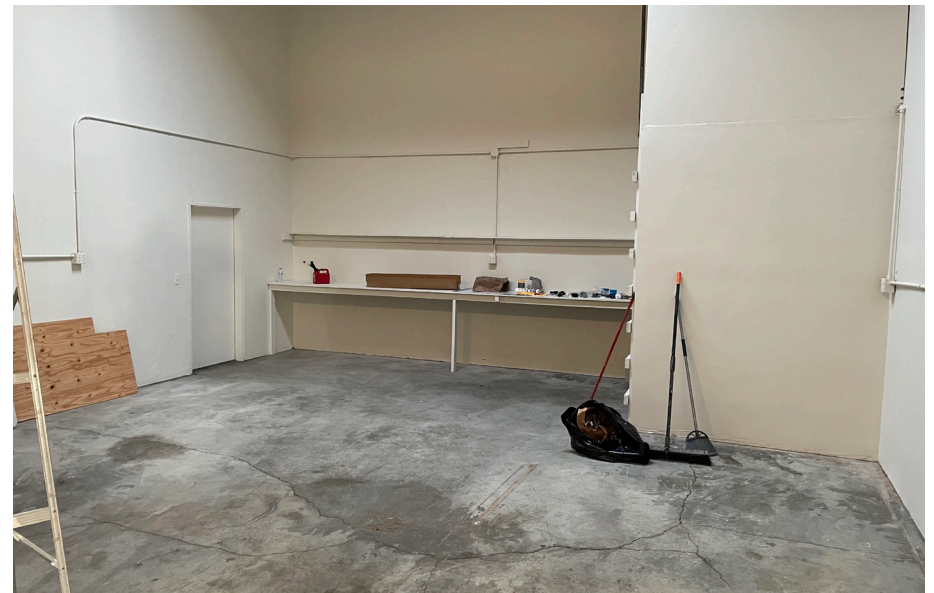


# 5679 REDWOOD DRIVE, UNITS A & B PHOTOS



5679 REDWOOD DRIVE  
UNITS A & B

**WAREHOUSE SPACE  
FOR LEASE**



**PRESENTED BY:**

**MIKE THOMASON, SREA**  
**KEEGAN & COPPIN CO., INC.**  
LIC # 01330583 (707) 664-1400, EXT 309  
MTHOMASON@KEEGANCOPPIN.COM

The above information, while not guaranteed, has been secured from sources we believe to be reliable. Submitted subject to error, change or withdrawal. An interested party should verify the status of the property and the information herein.