

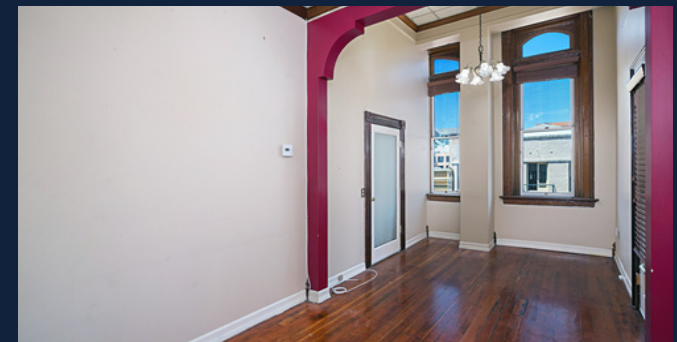
CAST  
CAPITAL PARTNERS

# Louis Bank of Commerce

835-837 Fifth Avenue San Diego, CA 92101

## OFFICE AND RETAIL SPACES FOR LEASE

- Open Floor Plans & High Ceilings
- Original wood floors & exposed brick walls
- Turnkey Suites Available
- Prime Retail/Restaurant space on 5th Avenue



835-837 FIFTH AVENUE SAN DIEGO, CA 92101

# SUITES AVAILABLE FOR LEASE

## RETAIL **\$3.50/SF NNN**

SUITE 100 4,232 RSF

## OFFICE **\$1.75-\$3.00/SF FS**

SUITE 102 268 SF

SUITE 205 769 RSF

SUITE 207 1,633 RSF

SUITE 301 339 RSF

SUITE 304-306 947 SF  
*\*can be demised to 300 SF*

SUITE 307 313 RSF

SUITE 312 501 RSF

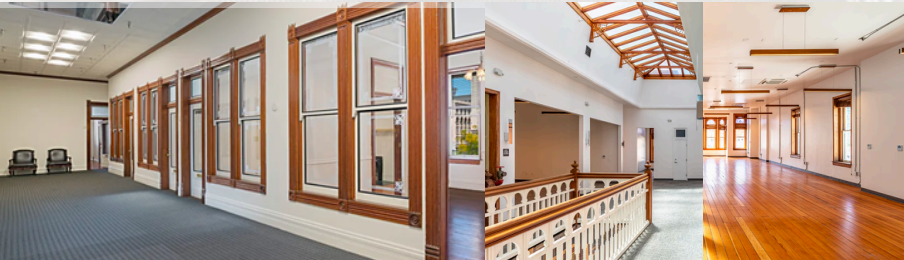
SUITE 314 325 RSF

SUITE 315 309 RSF

SUITE 400 ±4,421 RSF



*\*Conceptual Rendering*



### **BRET MORRISS**

Managing Partner

619-870-8665  
Bret.Morriss@Cast-Cap.com  
CA Lic. 02037074

### **RYAN KING**

Partner

619-567-2677  
Ryan.King@Cast-Cap.com  
CA Lic. 01885401

### **JOSH SIMMS**

Director

619-500-7473  
Josh.Simms@Cast-Cap.com  
CA Lic. 02080261

### **CARRIE DUDA**

Senior Associate

619-489-5373  
Carrie.Duda@Cast-Cap.com  
CA Lic. 02199169

## CAST CAPITAL PARTNERS

5090 Shoreham Place, Suite 100,  
San Diego, CA 92122