

# 4951 FM 1283, PIPE CREEK, TX FOR SALE

4951 FM 1283, Pipe Creek, TX 78063



## OFFERING SUMMARY

<b>SALE PRICE:</b>	\$699,000
<b>LOT SIZE:</b>	1.05 Acres
<b>BUILDING SIZE:</b>	10,204 SF
<b>ZONING:</b>	Commercial
<b>MARKET:</b>	Bandera County
<b>SUBMARKET:</b>	Pipe Creek
<b>PRICE / SF:</b>	\$68.50

## PROPERTY OVERVIEW

Mixed-use, multi-tenant Income Producing Hill Country investment property on 1.05+/- Acres. Tenant Mix: casual restaurant & bar, cabinet shop, taco-stand, welder, carpenter. On Corner near Medina Lake and Historic Bandera, Texas.

## PROPERTY HIGHLIGHTS

- Income Producing Mixed-use, multi-tenant Hill Country investment property
- Land is 1.05+/- Acres
- Tenant Mix: casual restaurant & bar, cabinet shop, taco-stand, welder, carpenter.
- On Corner Near Medina Lake and Historic Bandera, TX
- On Very Busy FM 1283
- Opportunity to grow Income

**KW COMMERCIAL**  
Boehm Commercial Group,  
PO Box 722  
Boerne, TX 78006

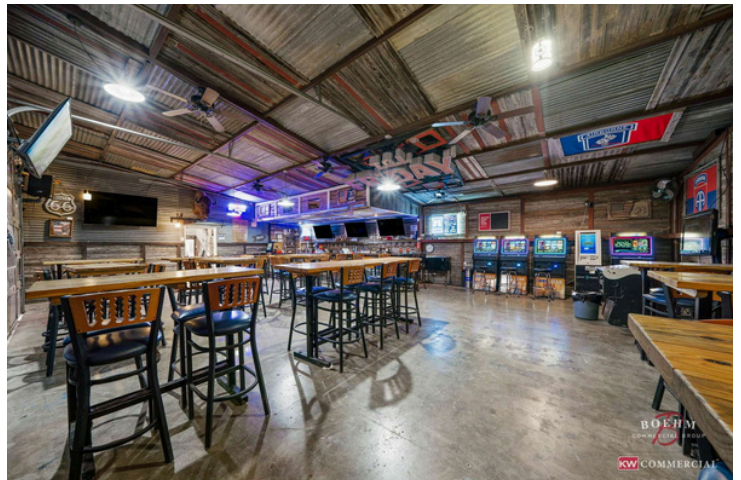
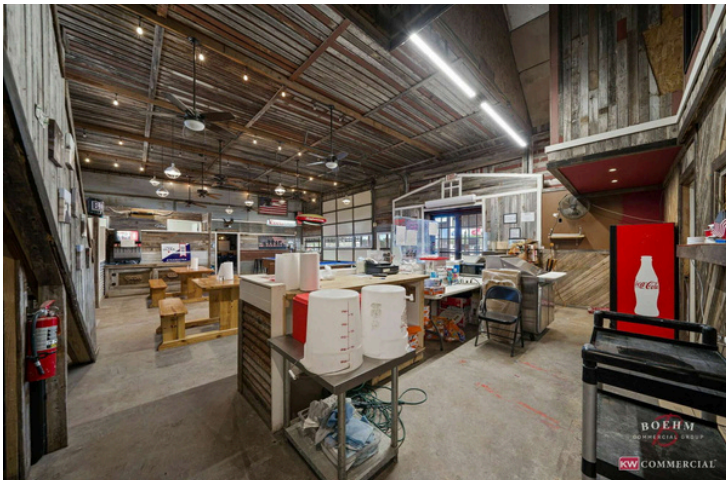
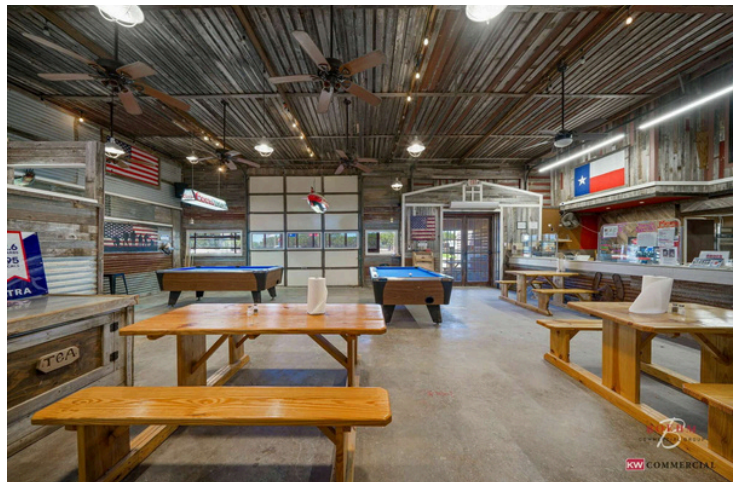
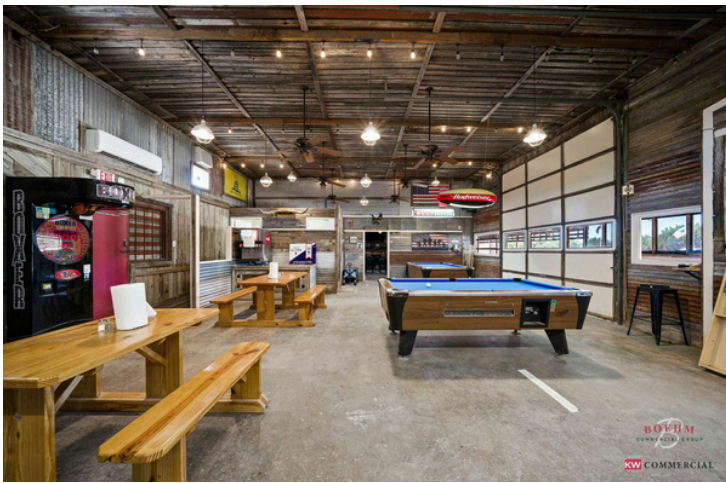
**GLEN BOEHM, CCIM, GRI**  
Director/Broker Associate  
O:210.213.6886  
C:210.213.6886  
glen@glenboehm.com  
TX #550654

**LANITA BRONIKOWSKY**  
Realtor  
C:830.777.3911  
lanita.bronikowsky@kw.com  
www.lanita.bonikowsky.com  
TX #791611

We obtained the information above from sources we believe to be reliable. However, we have not verified its accuracy and make no guarantee, warranty or representation about it. It is submitted subject to the possibility of errors, omissions, change of price, rental or other conditions, prior sale, lease or financing, or withdrawal without notice. We include projections, opinions, assumptions or estimates for example only, and they may not represent current or future performance of the property. You and your tax and legal advisors should conduct your own investigation of the property and transaction.

# 4951 FM 1283, PIPE CREEK, TX FOR SALE

4951 FM 1283, Pipe Creek, TX 78063



**KW COMMERCIAL**  
Boehm Commercial Group,  
PO Box 722  
Boerne, TX 78006

**GLEN BOEHM, CCIM, GRI**  
Director/Broker Associate  
O:210.213.6886  
C:210.213.6886  
glen@glenboehm.com  
TX #550654

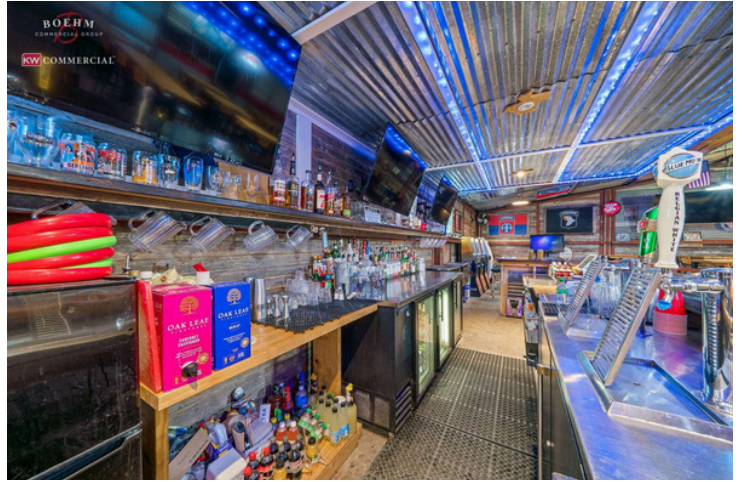
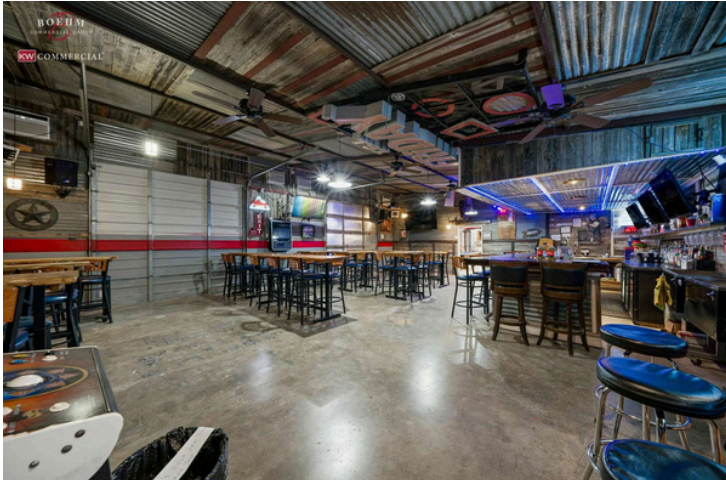
**LANITA BRONIKOWSKY**  
Realtor  
C:830.777.3911  
lanita.bronikowsky@kw.com  
www.lanita.bonikowsky.com  
TX #791611

We obtained the information above from sources we believe to be reliable. However, we have not verified its accuracy and make no guarantee, warranty or representation about it. It is submitted subject to the possibility of errors, omissions, change of price, rental or other conditions, prior sale, lease or financing, or withdrawal without notice. We include projections, opinions, assumptions or estimates for example only, and they may not represent current or future performance of the property. You and your tax and legal advisors should conduct your own investigation of the property and transaction.

Each Office Independently Owned and Operated [kwcommercial.com](http://kwcommercial.com)

# 4951 FM 1283, PIPE CREEK, TX FOR SALE

4951 FM 1283, Pipe Creek, TX 78063



**KW COMMERCIAL** Boehm  
Commercial Group, PO Box  
722 Boerne, TX 78006

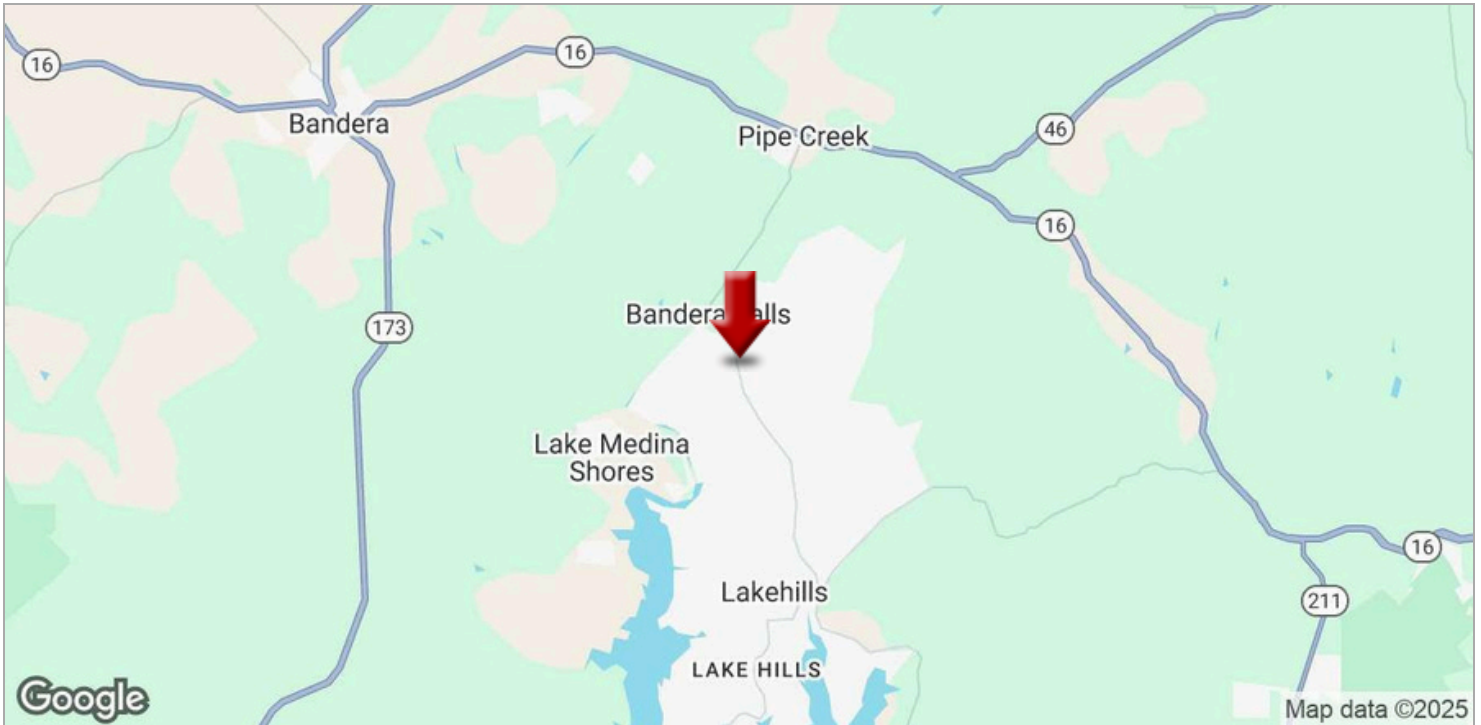
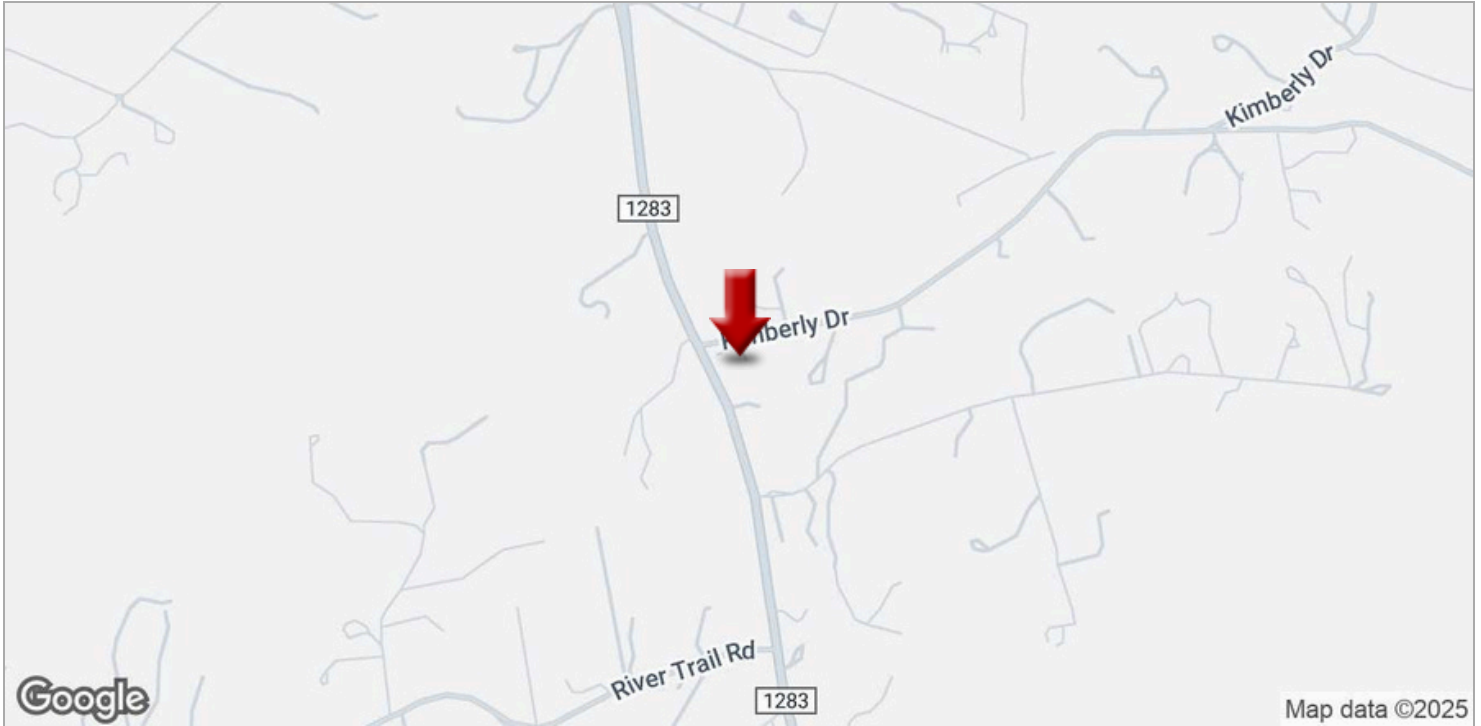
**GLEN BOEHM, CCIM, GRI**  
Director/Broker Associate  
O:210.213.6886  
C:210.213.6886  
glen@glenboehm.com  
TX #550654

**LANITA BRONIKOWSKY**  
Realtor  
C:830.777.3911  
lanita.bronikowsky@kw.com  
www.lanita.bronikowsky.com  
TX #791611

We obtained the information above from sources we believe to be reliable. However, we have not verified its accuracy and make no guarantee, warranty or representation about it. It is submitted subject to the possibility of errors, omissions, change of price, rental or other conditions, prior sale, lease or financing, or withdrawal without notice. We include projections, opinions, assumptions or estimates for example only, and they may not represent current or future performance of the property. You and your tax and legal advisors should conduct your own investigation of the property and transaction.

# 4951 FM 1283, PIPE CREEK, TX FOR SALE

4951 FM 1283, Pipe Creek, TX 78063



**KW COMMERCIAL**  
Boehm Commercial Group,  
PO Box 722  
Boerne, TX 78006

**GLEN BOEHM, CCIM, GRI**  
Director/Broker Associate  
O:210.213.6886  
C:210.213.6886  
glen@glenboehm.com  
TX #550654

**LANITA BRONIKOWSKY**  
Realtor  
C:830.777.3911  
lanita.bronikowskey@kw.com  
www.lanita.bonikowsky.com  
TX #791611

We obtained the information above from sources we believe to be reliable. However, we have not verified its accuracy and make no guarantee, warranty or representation about it. It is submitted subject to the possibility of errors, omissions, change of price, rental or other conditions, prior sale, lease or financing, or withdrawal without notice. We include projections, opinions, assumptions or estimates for example only, and they may not represent current or future performance of the property. You and your tax and legal advisors should conduct your own investigation of the property and transaction.



**,QIRUPDWLRQ \$ERXW %URNHUDJH 6HUFLFHV**  
 7H[DV ODZ UHTXLUHV DOO UHDO HVWDWH OLFHQVH KROGHUV WR JLYH WKH IROORZLQJ QIRUPDWLRQ  
 DERXW EURNHUDJH VHUFLFHV WR SURVSHFWLYH EX\HUV WHQDQVW VHOOHUV DQG ODQGORUGV



7<3(6 2) 5(\$/ (67\$7( /,&(16( +2/'56

Y \$ %52.(5 LV UHVSQRVLEOH IRU DOO EURNHUDJH DFUWLVWLVH LQFOXGLQJ DFWW SHUIRUPHG E\ VDOHV DJHQWV VSRQVUHG E\ WKH EURNHU  
 Y \$ 6\$/(6 \$\*(17 PXVW EH VSRQVUHG E\ D EURNHU DQG ZRUNV ZLWK FOLHQWV RQ EHKDOI RI WKH EURNHU

\$ %52.(5-6 0,1,080 '87,(6 5(48,5(' %< /\$: \$ FOLHQW LV WKH SHUVRQ RU SDUW\ WKDW WKH EURNHU UHSUHVVHQQW -

- Y 3XW WKH LQWHUHVW RI WKH FOLHQW DERYH DOO RWKHUV LQFOXGLQJ WKH EURNHU\ RZQ LQWHUHVWV
- Y ,QIRUP WKH FOLHQW RI DQ\ PDWHULDO LQIRUPDWLRQ DERXW WKH SURSHU\ RU WUDQVDFWLRQ UHFHLYHG E\ WKH EURNHU
- Y \$QVZHU WKH FOLHQW\ TXHVWLQV DQG SUHVHWV DQ\ RIWHU WR RU FRXQWU RIWHU IURP WKH FOLHQW DQG
- Y 7UHDW DOO SDUWLHV WR D UHDO HVWDWH WUDQVDFWLRQ KRQHVWO\ DQG IDLUO\

\$ /,&(16( +2/'5 &\$1 5(35(6(17 \$ 3\$57< ,1 \$ 5(\$/ (67\$7( 75\$16\$&7,21 -

~~\$6+ \$\*(17- )25- %8<(5 7(1\$17 - 7KH EURNHU EHFRRPHV WKH EX\HU WHQDQW V DJHQW E\ DJUHLQJ WR UHSUHVVHQQW WKH EX\HU XVXDOO\ WKURXJK D ZULWWHQ UHSUHVVHQDWLRQ~~  
 DJUHLPHQW \$Q RZQHU V DJHQW PXVW SHUIRUP WKH EURNHU\ PLQLXP GXWLHV DERYH DQG PXVW LQIRUP WKH RZQHU RI DQ\ PDWHULDO LQIRUPDWLRQ DERXW WKH  
 SURSHU\ RU WUDQVDFWLRQ NQRZQ E\ WKH DJHQW LQFOXGLQJ LQIRUPDWLRQ GLVFORVHG WR WKH DJHQW RU VXEDJHQW E\ WKH EX\HU RU EX\HU\ DJHQW

~~\$6- \$\*(17- )25- %8<(5 7(1\$17 - 7KH EURNHU EHFRRPHV WKH EX\HU WHQDQW V DJHQW E\ DJUHLQJ WR UHSUHVVHQQW WKH EX\HU XVXDOO\ WKURXJK D ZULWWHQ UHSUHVVHQDWLRQ~~  
 DJUHLPHQW \$ EX\HU V DJHQW PXVW SHUIRUP WKH EURNHU\ PLQLXP GXWLHV DERYH DQG PXVW LQIRUP WKH EX\HU RI DQ\ PDWHULDO LQIRUPDWLRQ DERXW WKH SURSHU\ RU  
 WUDQVDFWLRQ NQRZQ E\ WKH DJHQW LQFOXGLQJ LQIRUPDWLRQ GLVFORVHG WR WKH DJHQW E\ WKH VHOOHU RU VHOOHU\ DJHQW

~~\$6- \$\*(17- )25- %27+ - ,17(50(',\$5< 7R DFW DV DQ LQWHUHVTLU\ EHWZHHQ WKH SDUWLHV WKH EURNHU PXVW ILUUV REWDLQ WKH ZULWWHQ DJUHLPHQW RI HDFK-SDUW\ WR WKH~~  
 WUDQVDFWLRQ 7KH ZULWWHQ DJUHLPHQW PXVW VWDWH ZKR ZLOO SD\ WKH EURNHU DQG LQ FRQVSLFXRXV EROG RU XQGHUOLQH SULQW VHW IRUWK WKH EURNHU V REOLJDWLRQ  
 LQWHUHVTLU\ \$ EURNHU ZKR DFWV DV DQ LQWHUHVTLU\

- Y OXVW WUHDW DOO SDUWLHV WR WKH WUDQVDFWLRQ LPSDUWLDUO\ DQG IDLUO\
- Y OD\ ZLWK WKH SDUWLHV ZULWWHQ FRQVHWV DSSRLQW D GLIHHUHQW OLFHQVH KROGHU DVMRFDWHG ZLWK WKH EURNHU WR HDFK SDUW\ RZQHU DQG EX\HU WR FRPPXLFDWH  
 ZLWK SURYLGH RSLQLRQV DQG DGYLGH WR DQG FDUU\ RXW WKH LQVXUFWLRQV RI HDFK SDUW\ WR WKH WUDQVDFWLRQ
- Y OXVW QRW XQOHVV VSHFLILFDOO\ DXWKRULJHG LQ ZULWQJ WR GR VR E\ WKH SDUW\ GLVFORVH
- Y WKDW WKH RZQHU ZLOO DFFHSW D SULFH OHVV WKDQ WKH ZULWWHQ DVNLQJ SULFH
- Y WKDW WKH EX\HU WHQDQW ZLOO SD\ D SULFH JUHDWHU WKDQ WKH SULFH VXEPLWVHG LQ D ZULWWHQ RIWHU DQG
- Y DQ\ FRILGHQWLDUO\ LQIRUPDWLRQ RU DQ\ RWKHU LQIRUPDWLRQ WKDW D SDUW\ VSHFLILFDOO\ LQVXUFWW WKH EURNHU LQ ZULWQJ QRW WR GLVFORVH XQOHVV UHTXLUHG WR  
 GR VR E\ ODZ

~~\$6 68%\$\*(17 \$ OLFHQVH KROGHU DFWV DV D VXEDJHQW ZKHQ DLGLQJ D EX\HU LQ D WUDQVDFWLRQ ZLWKRXW DQ DJUHLPHQW WR UHSUHVVHQQW WKH EX\HU \$ VXEDJHQW FDQ DVVLW~~  
 WKH EX\HU EXW GRHV QRW UHSUHVVHQQW WKH EX\HU DQG PXVW SODFH WKH LQWHUHVW RI WKH RZQHU ILUUV

72 \$92, ' ,6387(6 \$// \$\*(17(0(176 %7:(1 <28 \$1' \$ %52.(5 6+28/' % ( ,1 :5,7,1\* \$1' &/(5\$/< (67\$7/,6+ -

- Y 7KH EURNHU\ GXWLHV DQG UHVSQRVLEOLWLVH WR \RX DQG \RXU REOLJDWLRQV XQGHU WKH UHSUHVVHQDWLRQ DJUHLPHQW
- Y :KR ZLOO SD\ WKH EURNHU IRU VHUFLFHV SURYLGHG WR \RX ZKHQ SD\PHQW ZLOO EH PDGH DQG KRZ WKH SD\PHQW ZLOO EH FDOFXODWHG

/,&(16(- +2/'5- &217\$&7- ,1)250\$7,21 - 7KLV QRWLHV LV EHLQJ SURYLGHG IRU LQIRUPDWLRQ SXUSRVHV ,W GRHV QRW FUHDWH DQ REOLJDWLRQ IRU \RX WR XVH WKH  
 EURNHU\ VHUFLFHV 3OHDVH DFNQRZOHGJH UHFHLSW RI WKLV QRWLHV EHZRZ DQG UHWDLQ D FRS\ IRU \RXU UHFRUGV

HOOHU :LOOLV 6DO SOWROL\ OF	/HJDO#NZFLW\YLHZ FRP	-
/LFHQVHG %URNHU %URNHU)LUP 1DPH /LFHQVH 1R (PDLO 3KRQH		
RU 3ULPDU\ \$VVXPHG %XVLQHVV 1DPH		
-RVHSK + 6ORDQ ,,, -	/HJDO#NZFLW\YLHZ FRP-	-
'HVLJQDWHG %URNHU RI)LUP /LFHQVH 1R (PDLO 3KRQH		
7RQ\ =DPRUD -U	/HJDO#.ZFLW\YLHZ FRP-	-
/LFHQVHG 6XSHUYLVRU RI 6DOHV \$JHQW /LFHQVH 1R (PDLO 3KRQH		
\$VVRFDLWH		
*OHQ %RHKP	JOHQ#JOHQERHKP FRP	-
6DOHV \$JHQW \$VVRFDLWH\ 1DPH /LFHQVH 1R (PDLO 3KRQH		
BBB	B	
%X\HU 7HQDQW 6HOOHU /DQGORUG ,QLWLDQV 'DWH		

5HJXODWHG E\ WKH 7H[DV 5HDO (VWDWH &RPLVVLRQ ,QIRUPDWLRQ DYDLDEOH DW ZZZ WUHF WH[DV J



# Information About Brokerage Services

Texas law requires all real estate license holders to give the following information about brokerage services to prospective buyers, tenants, sellers and landlords.

11-2-2015



## TYPES OF REAL ESTATE LICENSE HOLDERS:

- A **BROKER** is responsible for all brokerage activities, including acts performed by sales agents sponsored by the broker.
- A **SALES AGENT** must be sponsored by a broker and works with clients on behalf of the broker.

## A BROKER'S MINIMUM DUTIES REQUIRED BY LAW (A client is the person or party that the broker represents):

- Put the interests of the client above all others, including the broker's own interests;
- Inform the client of any material information about the property or transaction received by the broker;
- Answer the client's questions and present any offer to or counter-offer from the client; and
- Treat all parties to a real estate transaction honestly and fairly.

## A LICENSE HOLDER CAN REPRESENT A PARTY IN A REAL ESTATE TRANSACTION:

**AS AGENT FOR OWNER (SELLER/LANDLORD):** The broker becomes the property owner's agent through an agreement with the owner, usually in a written listing to sell or property management agreement. An owner's agent must perform the broker's minimum duties above and must inform the owner of any material information about the property or transaction known by the agent, including information disclosed to the agent or subagent by the buyer or buyer's agent.

**AS AGENT FOR BUYER/TENANT:** The broker becomes the buyer/tenant's agent by agreeing to represent the buyer, usually through a written representation agreement. A buyer's agent must perform the broker's minimum duties above and must inform the buyer of any material information about the property or transaction known by the agent, including information disclosed to the agent by the seller or seller's agent.

**AS AGENT FOR BOTH - INTERMEDIARY:** To act as an intermediary between the parties the broker must first obtain the written agreement of *each party* to the transaction. The written agreement must state who will pay the broker and, in conspicuous bold or underlined print, set forth the broker's obligations as an intermediary. A broker who acts as an intermediary:

- Must treat all parties to the transaction impartially and fairly;
- May, with the parties' written consent, appoint a different license holder associated with the broker to each party (owner and buyer) to communicate with, provide opinions and advice to, and carry out the instructions of each party to the transaction.
- Must not, unless specifically authorized in writing to do so by the party, disclose:
  - o that the owner will accept a price less than the written asking price;
  - o that the buyer/tenant will pay a price greater than the price submitted in a written offer; and
  - o any confidential information or any other information that a party specifically instructs the broker in writing not to disclose, unless required to do so by law.

**AS SUBAGENT:** A license holder acts as a subagent when aiding a buyer in a transaction without an agreement to represent the buyer. A subagent can assist the buyer but does not represent the buyer and must place the interests of the owner first.

## TO AVOID DISPUTES, ALL AGREEMENTS BETWEEN YOU AND A BROKER SHOULD BE IN WRITING AND CLEARLY ESTABLISH:

- The broker's duties and responsibilities to you, and your obligations under the representation agreement.
- Who will pay the broker for services provided to you, when payment will be made and how the payment will be calculated.

**LICENSE HOLDER CONTACT INFORMATION:** This notice is being provided for information purposes. It does not create an obligation for you to use the broker's services. Please acknowledge receipt of this notice below and retain a copy for your records.

Keller Willis San Antonio, Inc	547594	Legal@kwcityview.com	210.696.9996
Licensed Broker /Broker Firm Name or Primary Assumed Business Name	License No.	Email	Phone
Joseph H Sloan III	526284	Legal@kwcityview.com	210.696.9996
Designated Broker of Firm	License No.	Email	Phone
Tony Zamora Jr.	537135	Legal@Kwcityview.com	210.696.9996
Licensed Supervisor of Sales Agent/ Associate	License No.	Email	Phone
Lanita Bronikowsky	791611	lanita.bronikowsky@kw.com	830.777.3911
Sales Agent/Associate's Name	License No.	Email	Phone

\_\_\_\_\_  
Buyer/Tenant/Seller/Landlord Initials

\_\_\_\_\_  
Date