

# FORMER ADULT DAYCARE FOR LEASE

139 WOODFIELD DRIVE  
MACON, GA 31210  
BIBB COUNTY

±6,000 SF  
±0.86 ACRE

\$9/SF, NNN

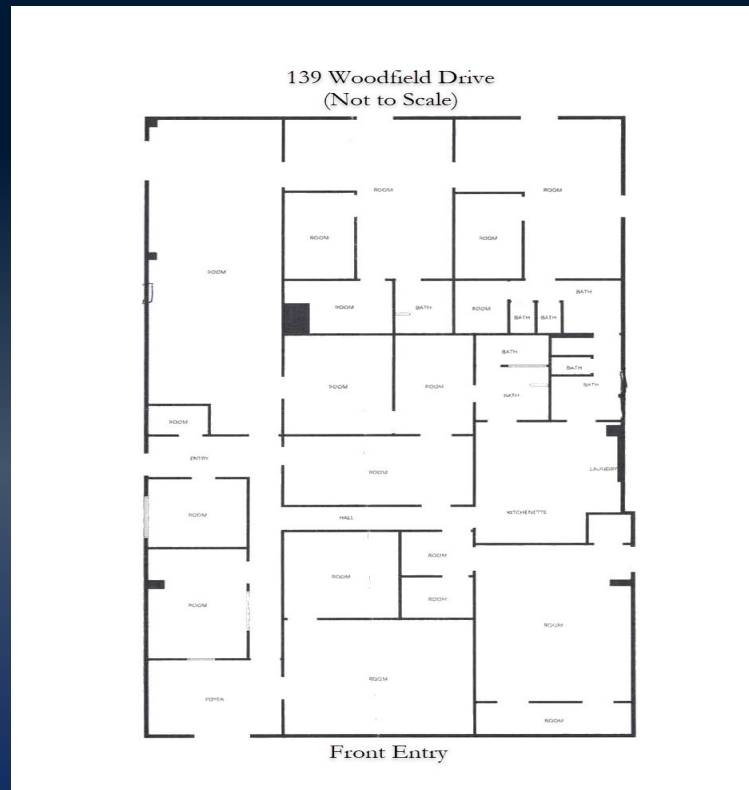


KEVIN HARKINS C: 478.338.0623  
KHARKINS@THESUMMITGROUPMACON.COM  
4124 ARKWRIGHT ROAD, SUITE 1, MACON, GA 31210  
O: 478.750.7507  
WWW.THESUMMITGROUPMACON.COM



## PROPERTY INFORMATION

- ±6,000 SF available
- Total building size : ±9,000 SF (contact agent regarding expansion opportunities)
- Situated on ±0.86 acre
- Multiple activity rooms and office spaces
- Includes a kitchenette, laundry room, and multiple restrooms
- Year built: 2000
- Zoned PDE (Planned Development)
- Conveniently located off Mercer University Drive (Hwy 74)



**139 WOODFIELD DRIVE**  
**MACON, GA 31210**  
**BIBB COUNTY**





# MAP



*The information contained herein has been compiled from various sources, both private and public. It is accurate and complete only to the extent to which The Summit Group has been able to ascertain from third party sources. As such, no warranty or guarantee is given or implied with regard to the accuracy or completeness of any information contained herein. Any interested party shall be required to conduct its own due diligence and investigations to verify, review, audit, or otherwise insure the information contained herein.*

