

611

S Westlake Ave
Los Angeles, CA 90057

Now For Sale
Eighty Units Hotel
Holiday Inn Express



Kotai Realty

Curt Wang

626-643-8181

wangcurt@yahoo.com

Rebecca Lin

626-988-7171

rebeccalin610@gmail.com



HOTEL OVERVIEW

Kotai Realty is pleased to present this investment opportunity at 611 S Westlake Ave Los Angeles CA 90057

Business and real estate together. Owner is retiring from the business. There is still 11 years of franchise contract remains with Holiday Inn Express, which is owned by InterContinental Hotels Group (IHG).

This hotel is operating in its full capacity. It made approximately gross 3.9 million (2025) 3.96 million (2023) 3.94 million (2022).

Their average daily rate is approximately \$180, occupancy rate is approximately 80%.





Property Overview

Address

**611 S Westlake Ave
Los Angeles, CA 90057**

APN:

5141-001-034

Use Code:

Hotel

Zoning:

LAC1

Lot size:

22457 square feet

Square Feet:

48630

Year Build:

1993

Pricing:

\$590,000/room or \$47,200,000

Parkings:

79

Number of Units:

80

Amenities:

Continental breakfast, gym, pool

Room Descriptions

There are five room types in this property, for a total of 80 rooms

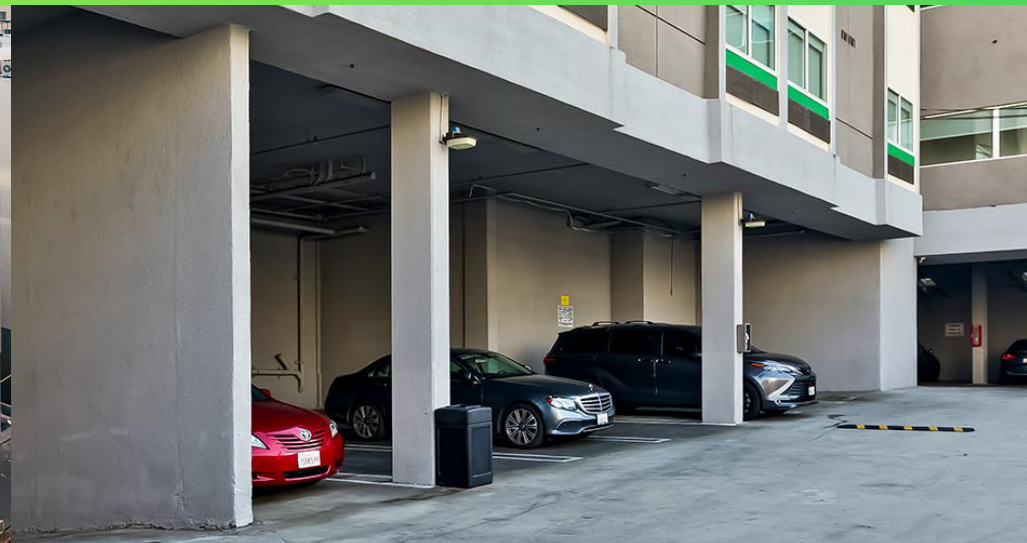
- Double Queen Suite : 4
- One King Suite : 11
- Standard Double Queen : 45
- Standard King : 17
- ADA Accessible : 3



Parking:

There are 79 parking spaces in total

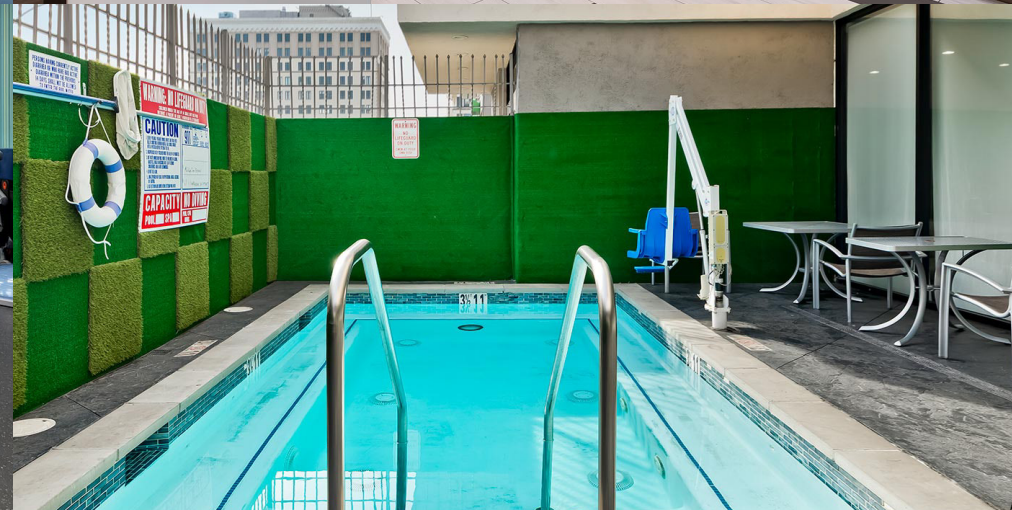
- 75 regular parking
- 2 handicap parking (Upper level)
- 2 handicap parking (Lower level)

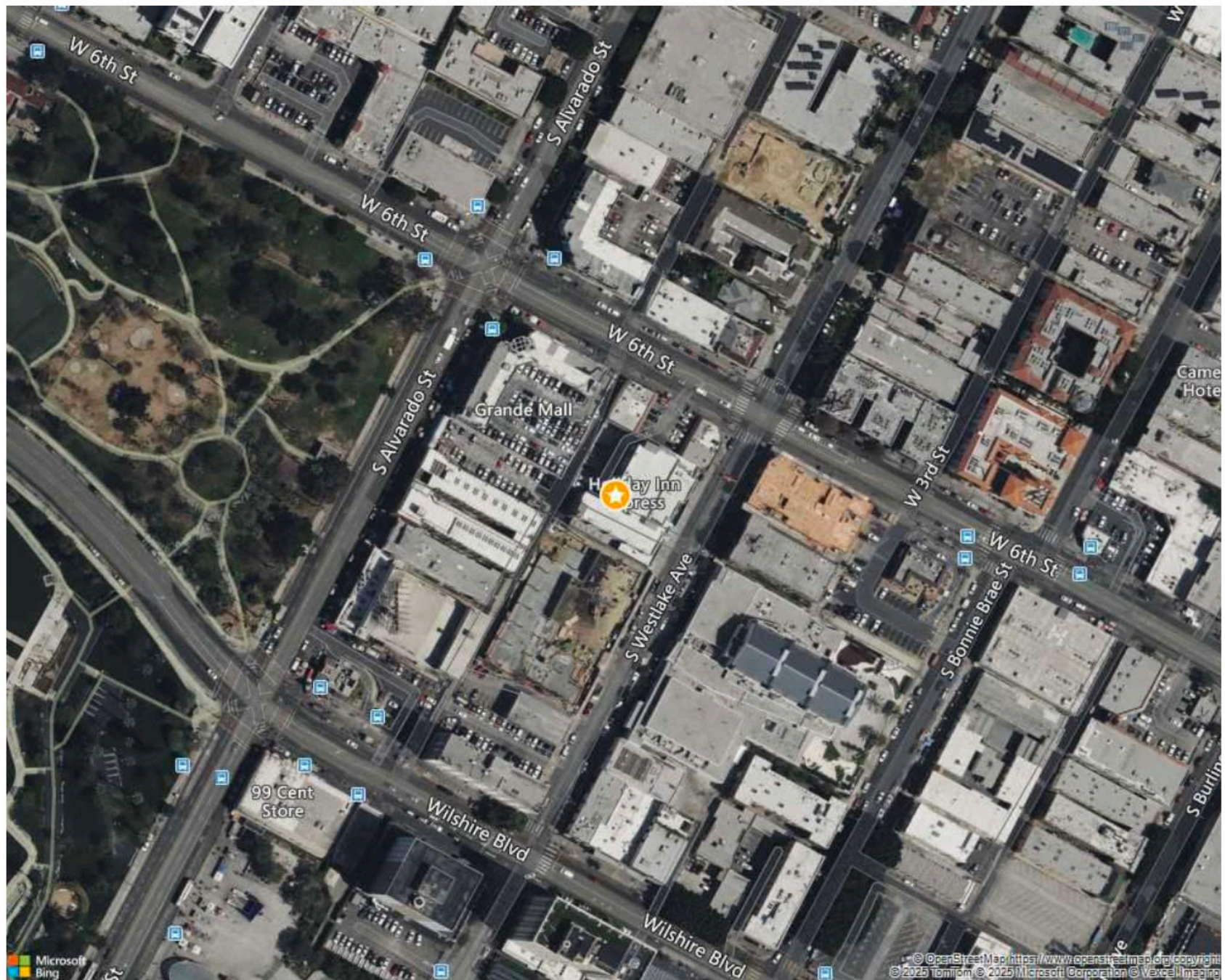


Amenities:

The hotel provides

- Continental breakfast
- Gym
- Pool





**611 S WESTLAKE AVE
LOS ANGELES, CA 90057-3501**

