

Barta Bailey

RETAIL PROPERTY FOR LEASE
431 NW 10TH STREET, OKLAHOMA CITY



VIDEO

Property Description

One of the most prominent properties in Midtown is now available for lease. Adjacent to an anchor restaurant space (Mezzo opening Spring '26), attached parking and visibility from multiple directions, this property is the perfect addition to Walker Avenue's successful retail corridor.

The available suite was originally developed as a TG&Y. The historic high ceilings and streamlined storefront are ideal for the next generation of retail to make their mark.

Property Highlights

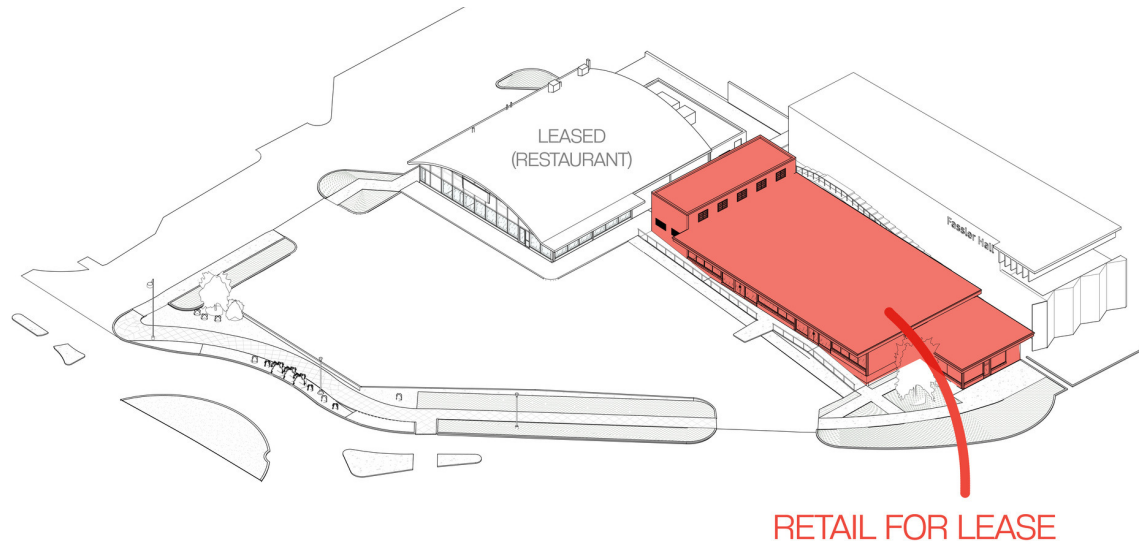
- Architecturally significant retail design
- Attached parking
- Sign opportunities
- Visibility to NW 10th Street and N Walker Ave.

Offering Summary

Lease Rate:	Negotiable (NNN)
Available SF:	1,391 - 6,538 SF
Lot Size:	24,690 SF
Building Size:	12,197 SF

Barta Bailey

AVAILABLE SUITES
431 NW 10TH STREET, OKLAHOMA CITY

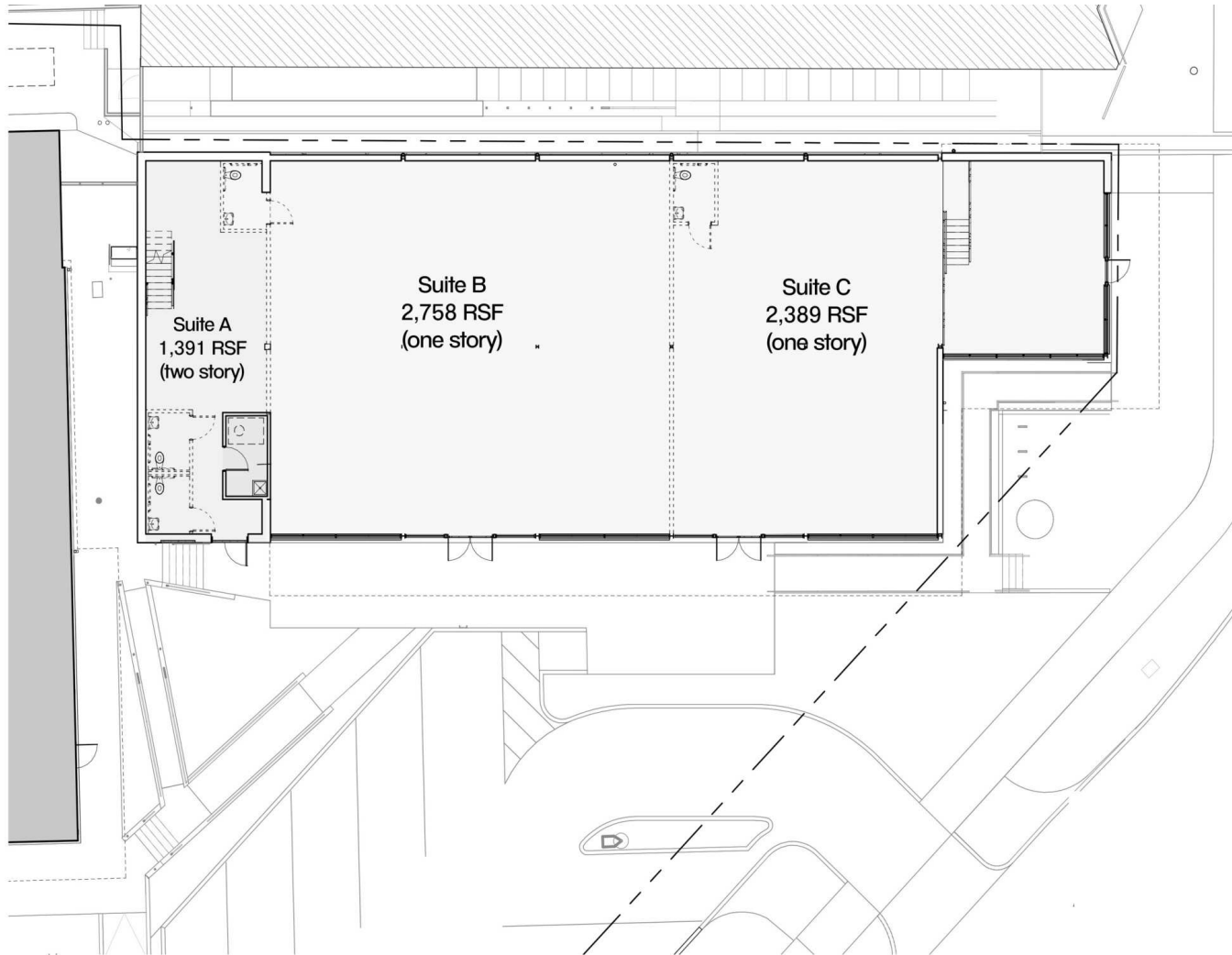


Lease Information

Lease Type:	NNN	Lease Term:	Negotiable
Total Space:	1,391 - 6,538 SF	Lease Rate:	Negotiable

Available Spaces

Suite	Tenant	Size (SF)	Lease Type	Lease Rate	Description
Retail Suite A	Available	1,391 - 6,538 SF	NNN	Negotiable	2-story space with additional exterior alley entry
Retail Suite B	Available	2,758 - 6,538 SF	NNN	Negotiable	North half of the south building on the site
Retail Suite C	Available	2,389 - 6,538 SF	NNN	Negotiable	South half of the south building on site. Includes NW 10th Street-facing entrance



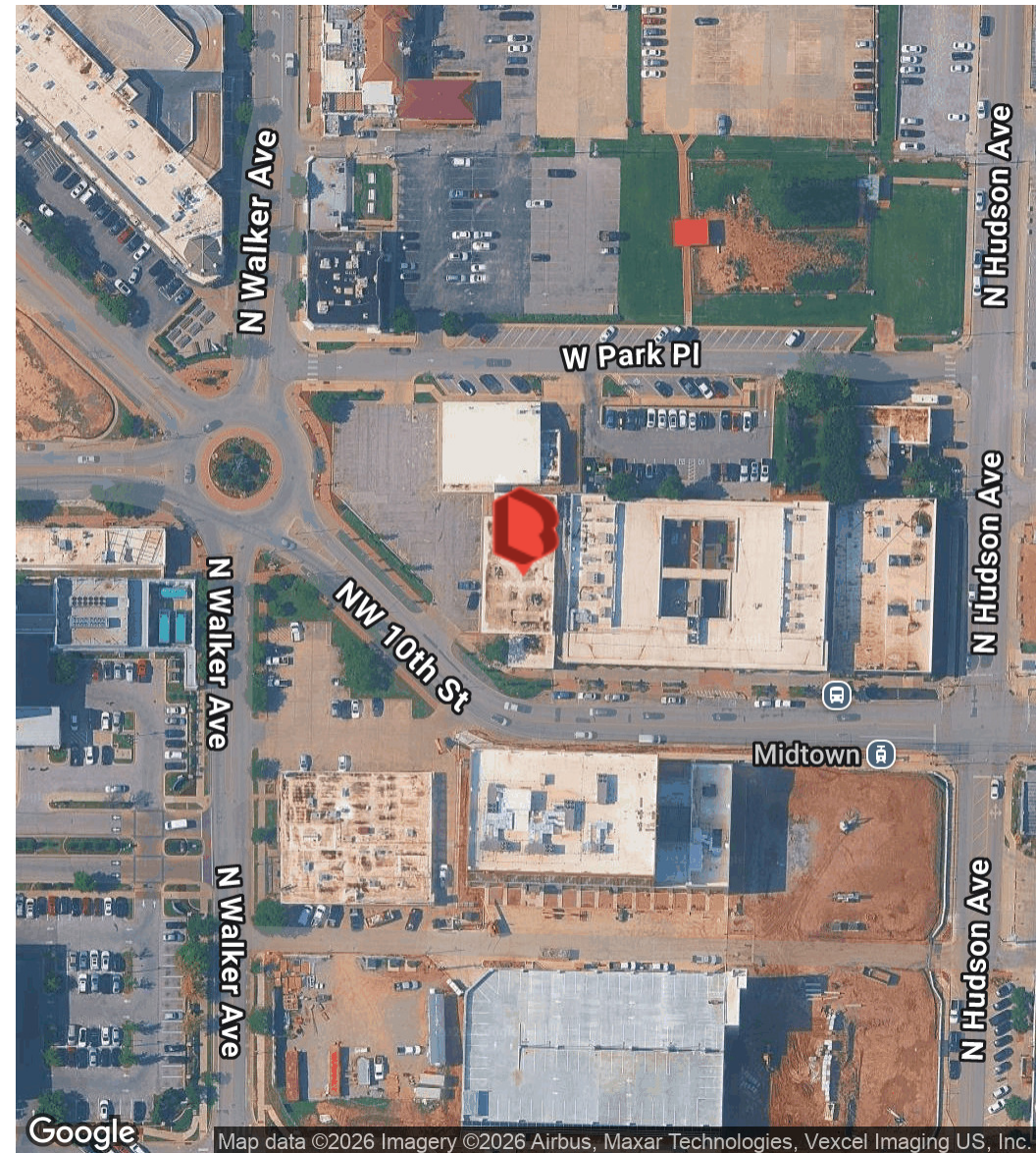
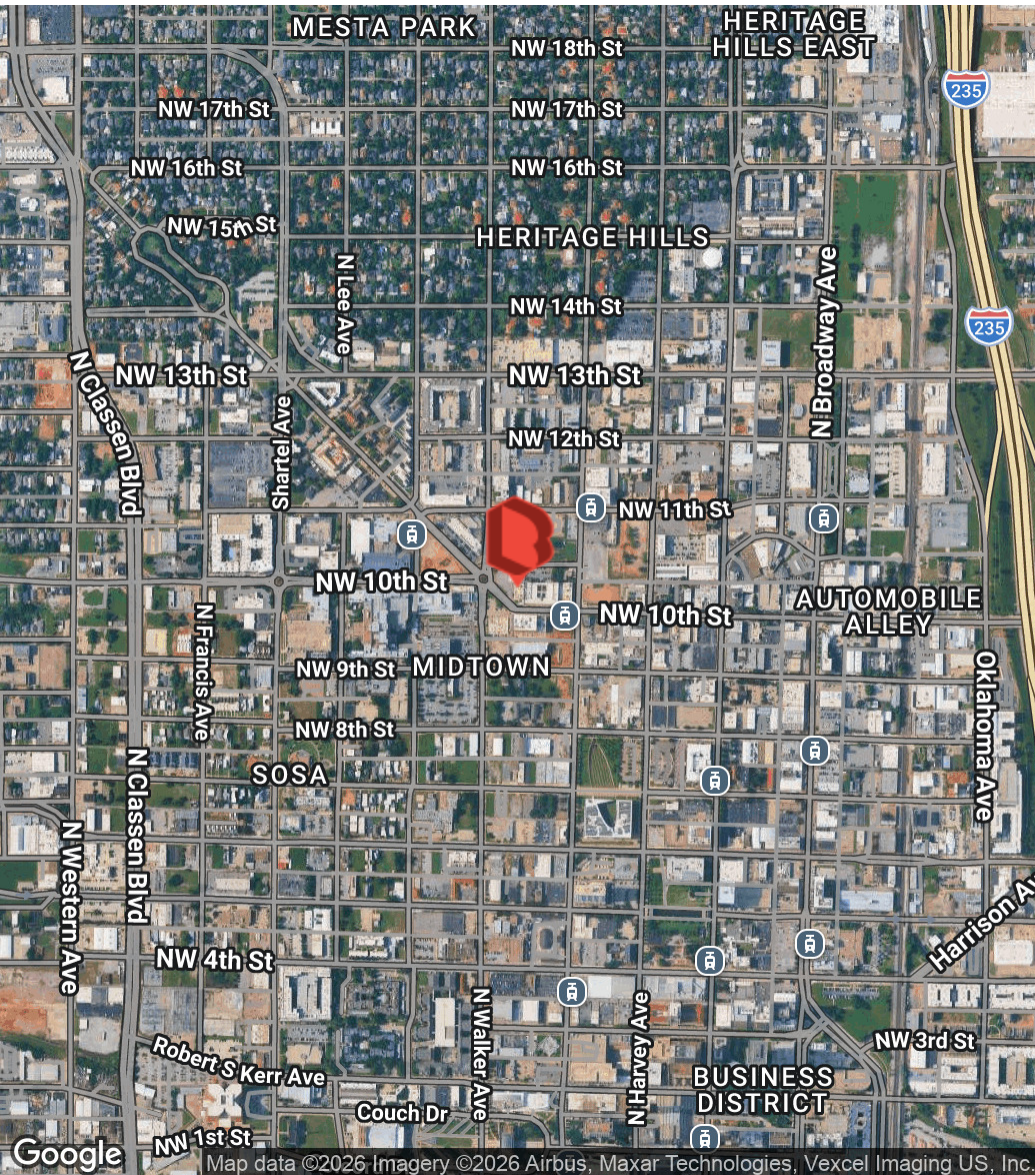
LEASE PLAN - BUILDING B 1ST FLOOR

SCALE: 1/16" = 1'-0"

Barta Bailey

LOCATION

431 NW 10TH STREET, OKLAHOMA CITY, OK



ALLISON BAILEY

405.620.3883

ALLISON@BARTABAILEY.COM

BARTABAILEY.COM