

THE MIDTOWNE

LEASING PACKAGE

2022

1155 PEACHTREE STREET
ATLANTA, GEORGIA 30309

THE MIDTOWNE





COMPENDIUM

- I. EXECUTIVE SUMMARY 3

- II. PROJECT DESCRIPTION 5
 - A.) MAP 6
 - B.) RENDERINGS 7
 - C.) FLOORPLANS 11

EXECUTIVE SUMMARY

EXECUTIVE SUMMARY

The Midtowne, bound by Peachtree, 14th, 13th, & Juniper Streets, is situated at main + main in Midtown Atlanta. At present, most pundits consider Midtown one of the nations most sought after corporate relocation addresses and Midtown's zip code 30309 one of the fastest growing high rise residential areas in the nation.

The Midtowne is being expanded at its base creating a new eye catching seven floor podium, additionally, The Midtowne will grow by six floors, from its original twenty one stories to twenty seven and when complete, will total 785,000 square feet of premium office atop fine eateries and luxury boutiques. Similar to The Dewberry Hotel in Charleston, which showcased Imperial Danby marble from Vermont, The Midtowne's facade and interior lobby will be re-clad with Fonta Da Moura, a similarly stunning white based marble discovered by The Dewberrys while on holiday in Portugal.

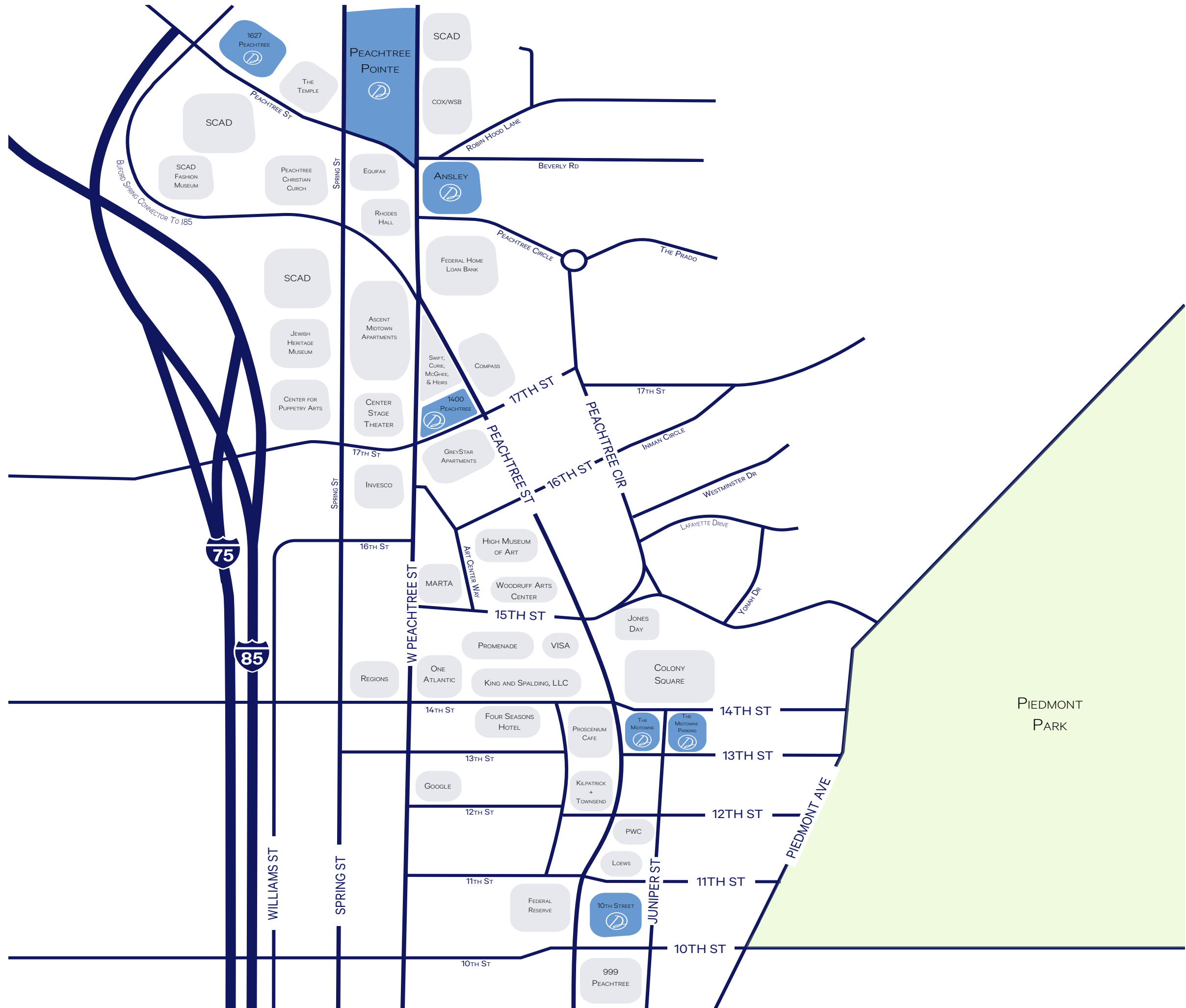
PROJECT SQUARE FOOTAGE

THE MIDTOWNE OFFICE TOWER:

Office:.....	745,000 SF
Retail:.....	40,000 SF
Total:.....	785,000 SF



PROJECT DESCRIPTION







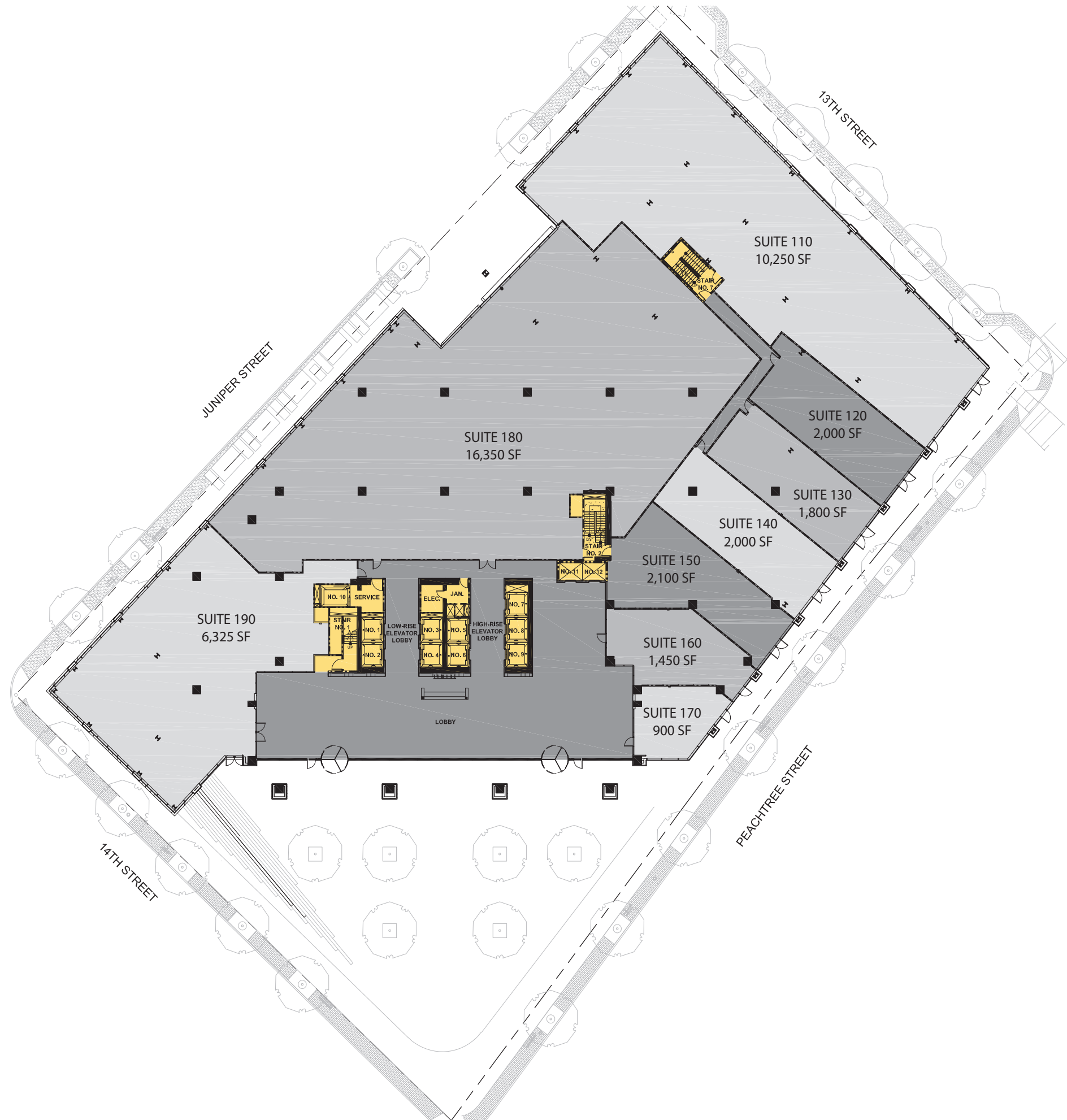




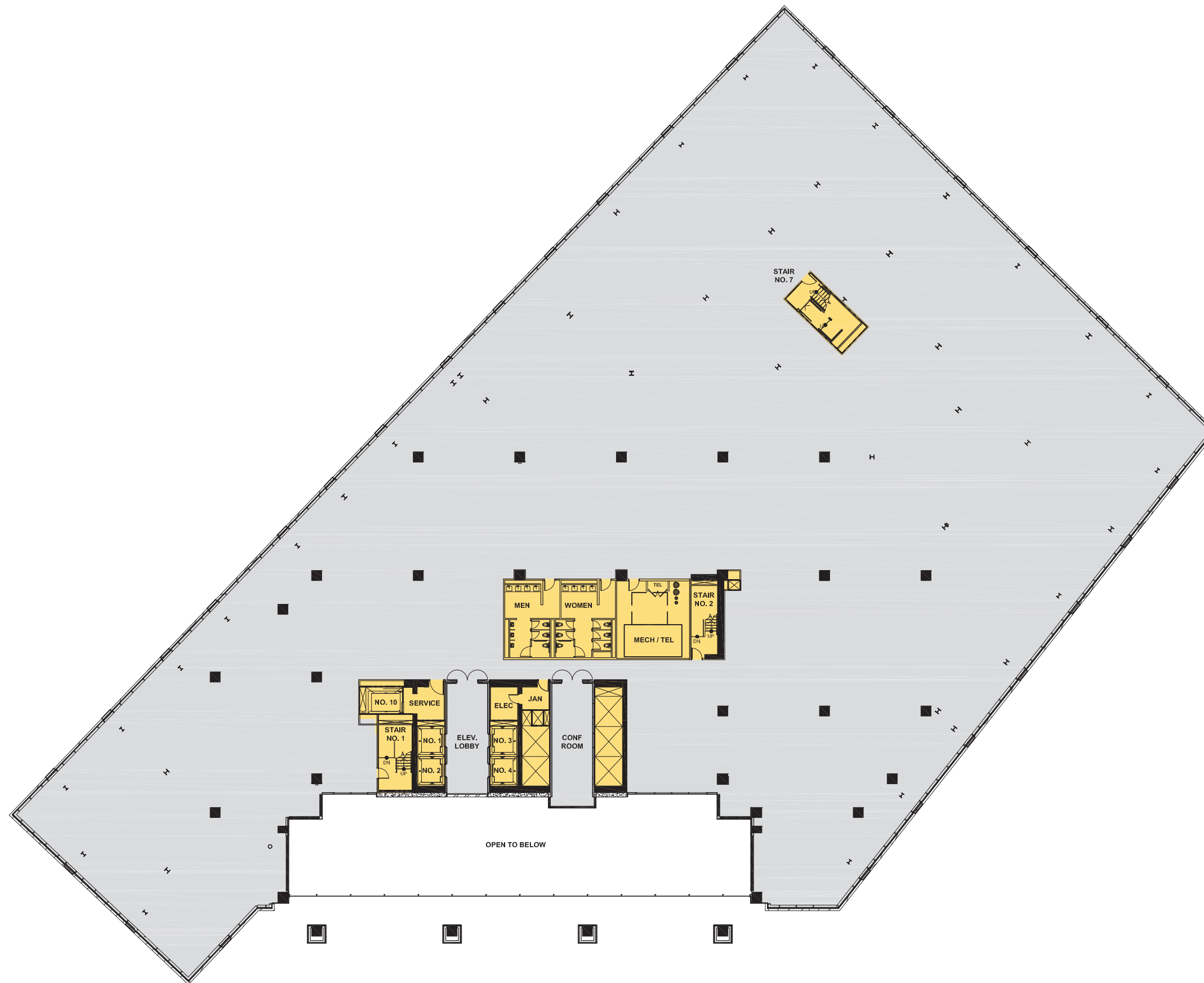
LEVEL B1



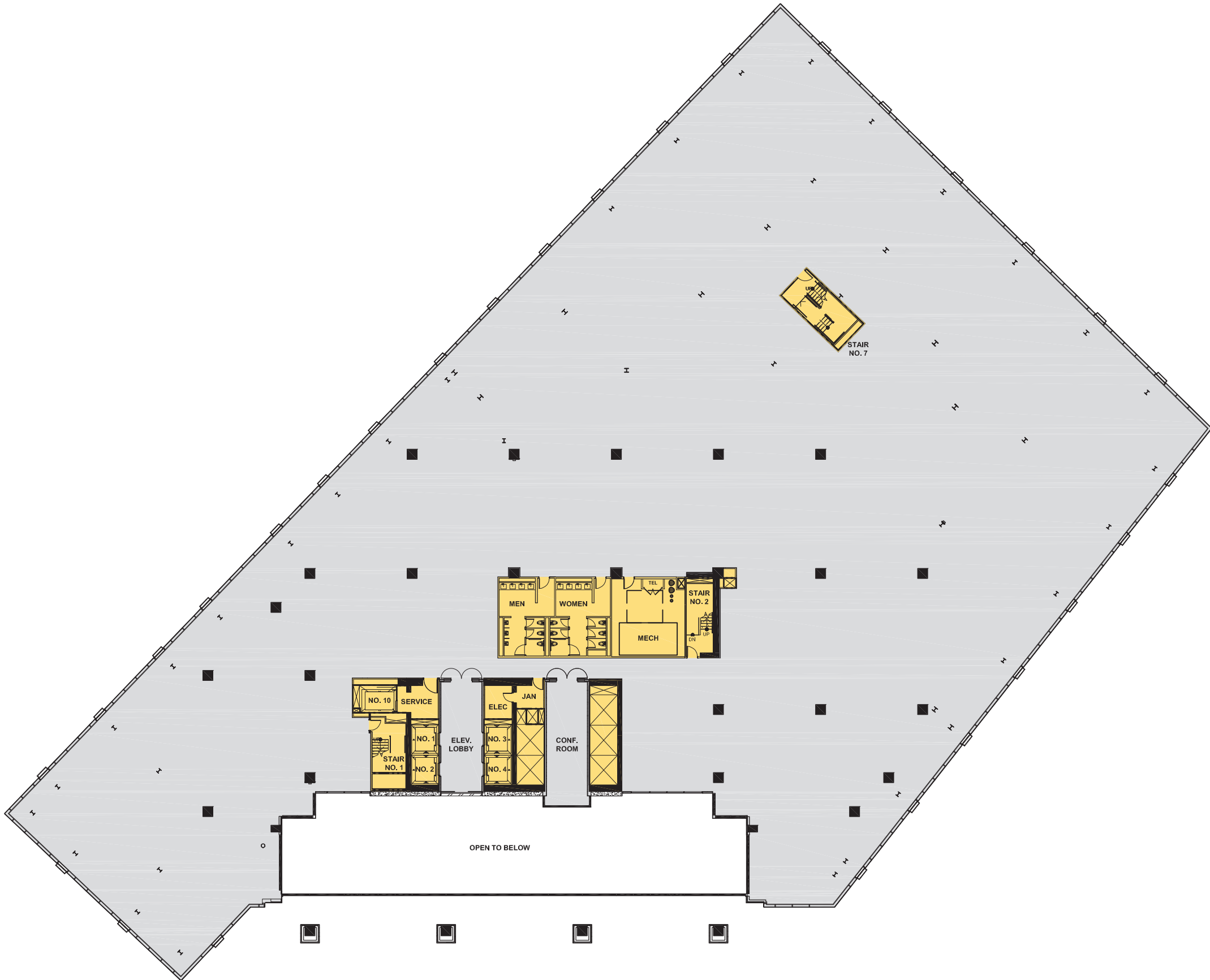
LEVEL 01



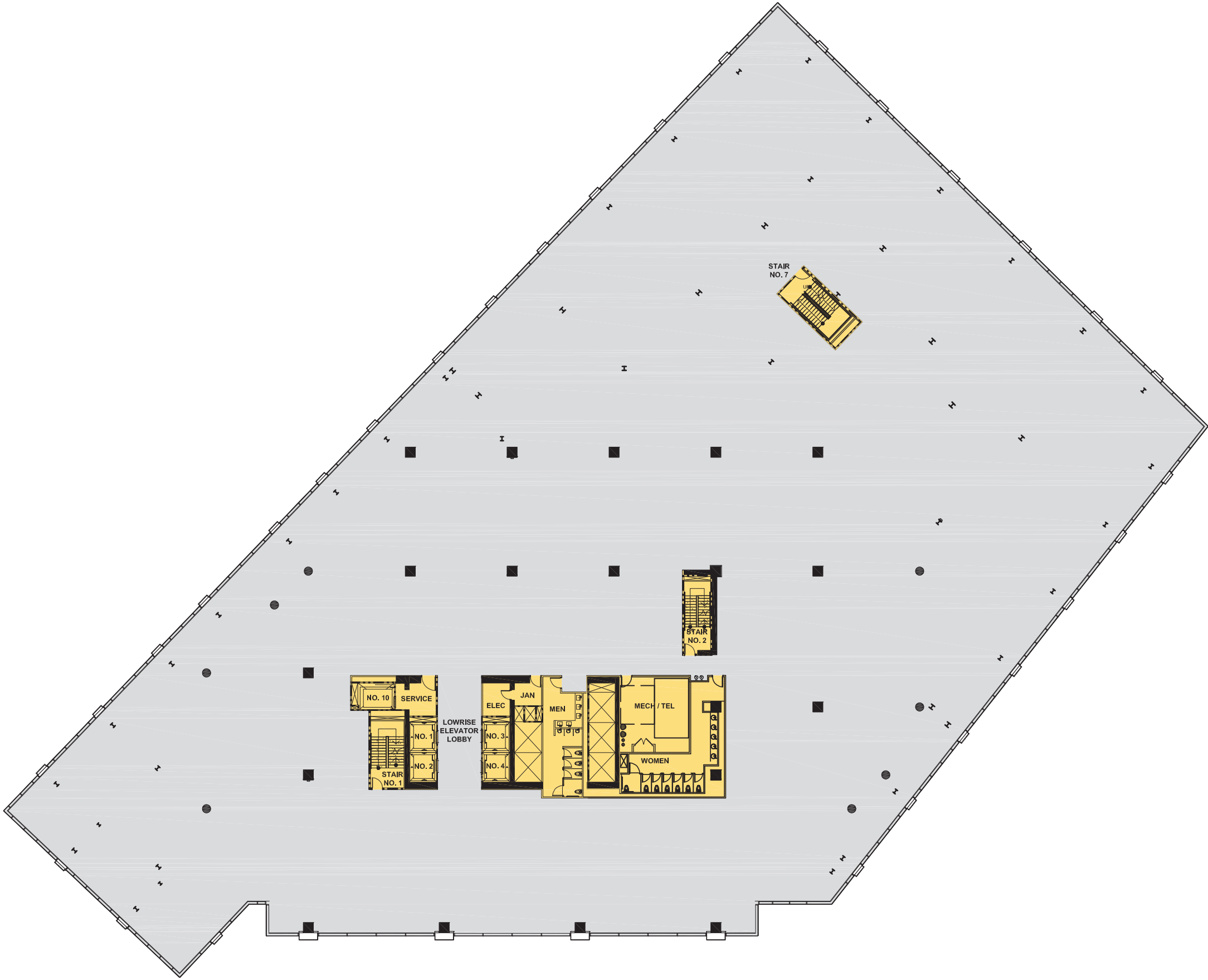
LEVEL 2
47,520 SF



LEVEL 3
47,630 SF

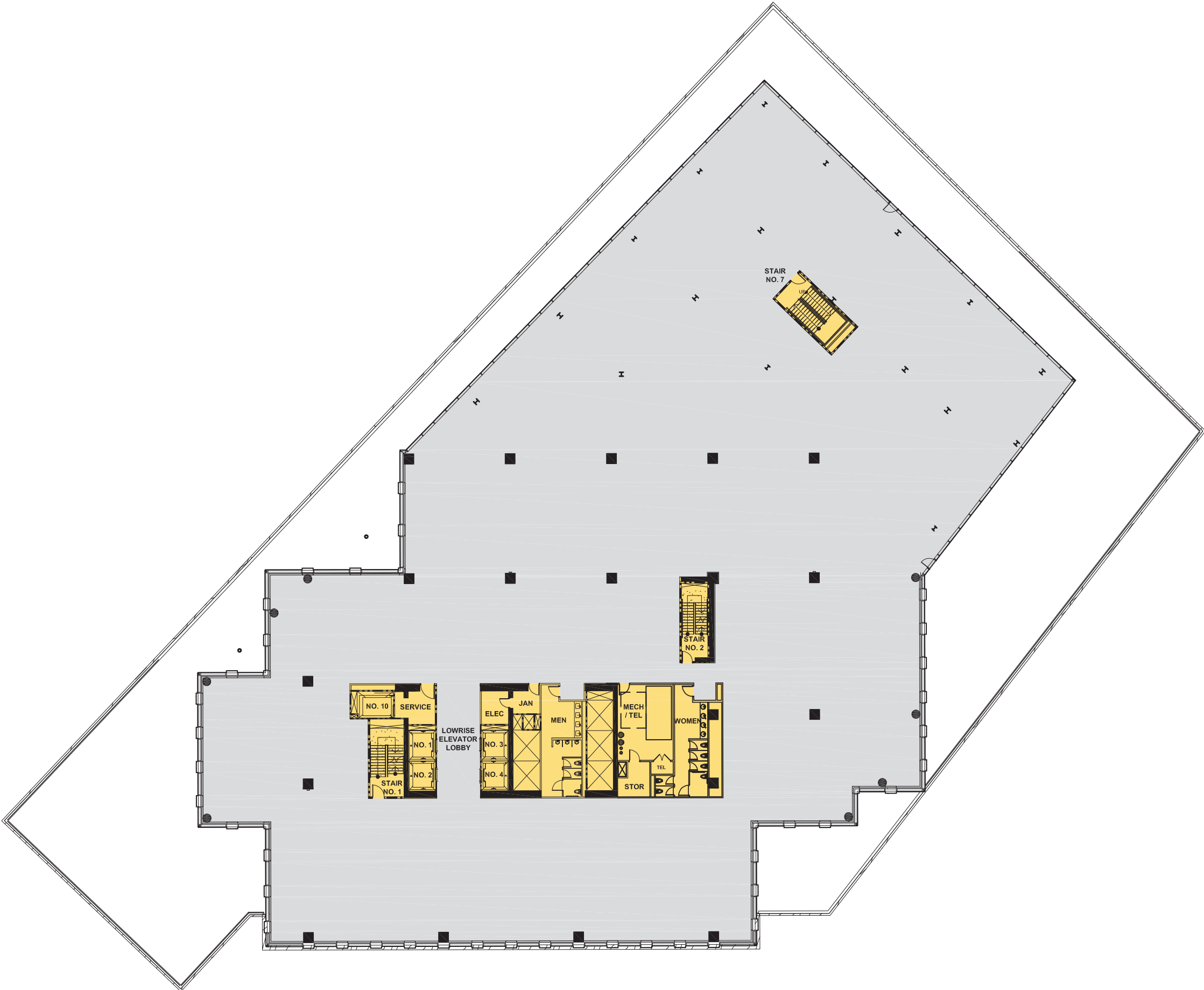


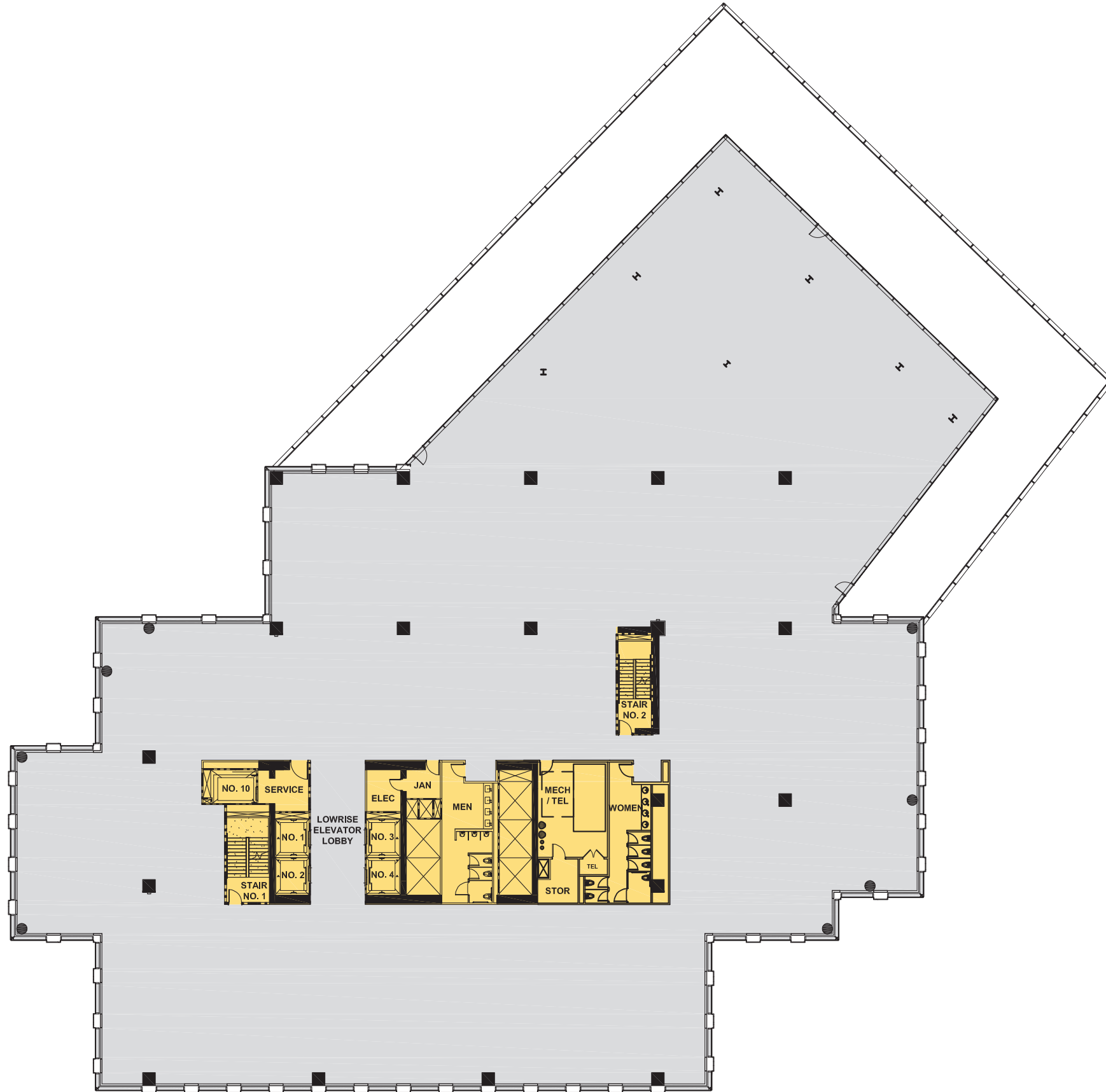
LEVELS 4-5
55,050 SF



LEVEL 6

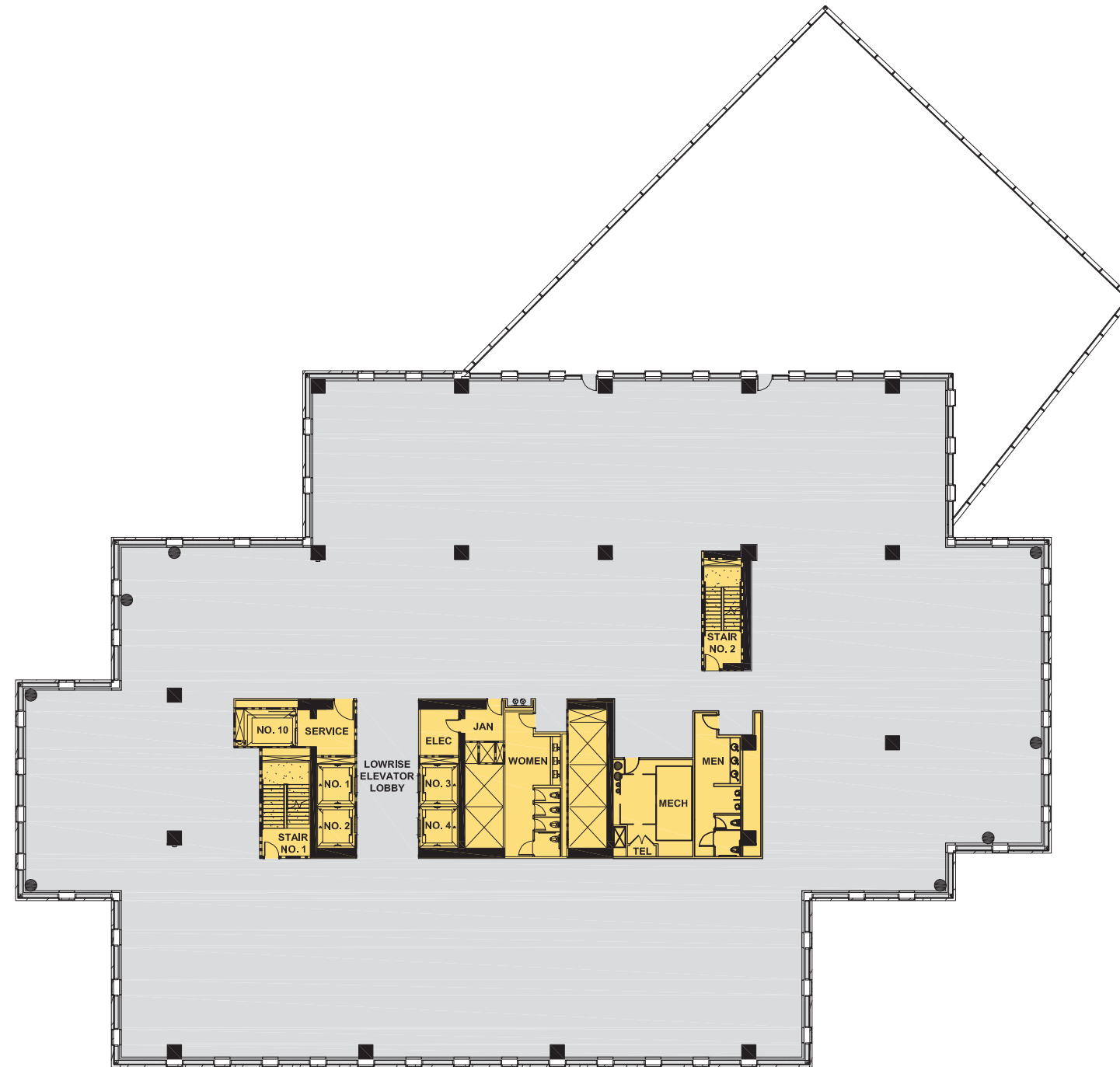
40,700 SF





LEVEL 8

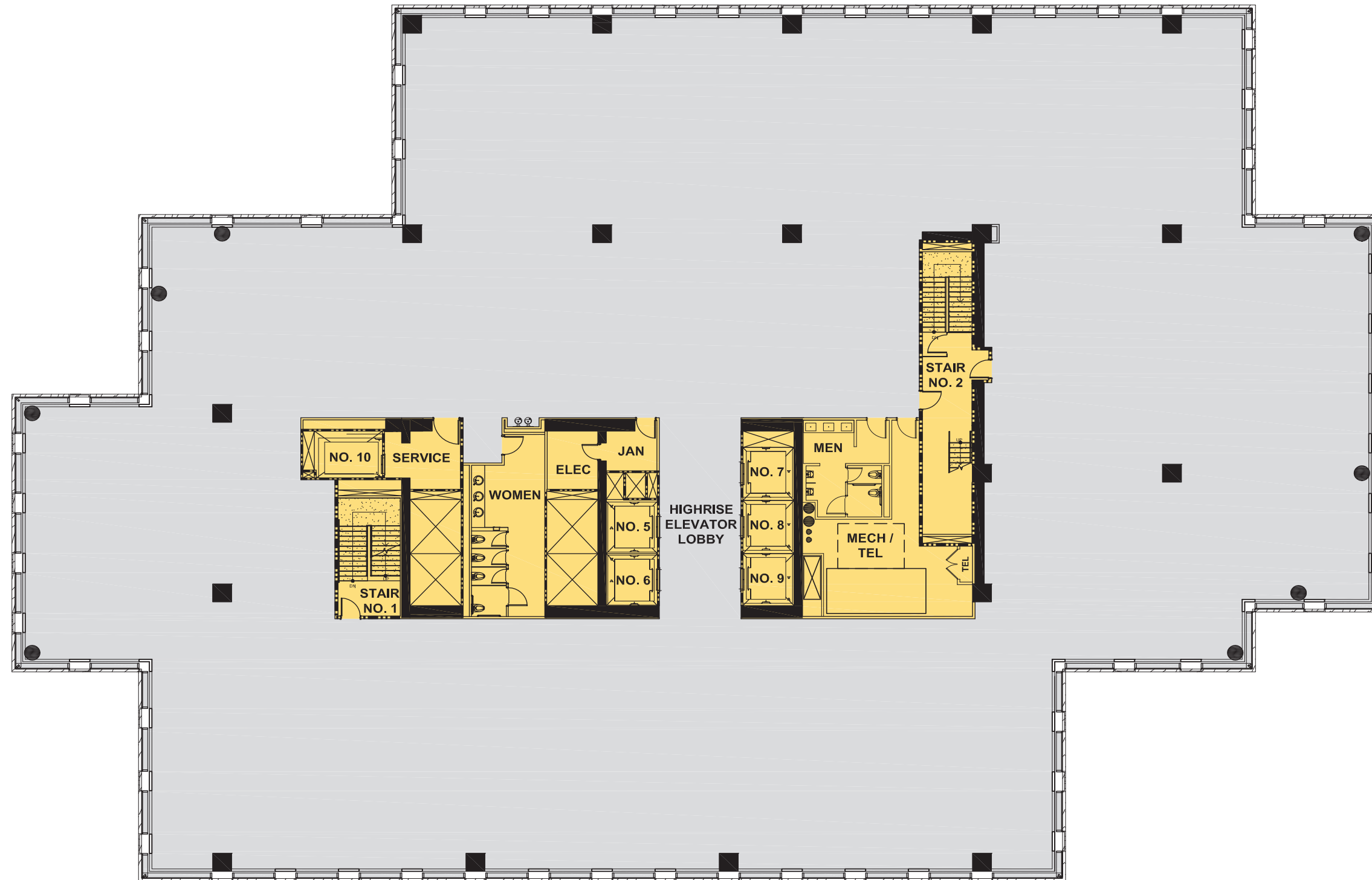
25,810 SF



LEVEL 9-11
24,080 SF



LEVEL 12
23,760 SF







LEVELS 16-19
24,420 SF



LEVEL 20
24,410 SF



LEVEL 21
24,410 SF



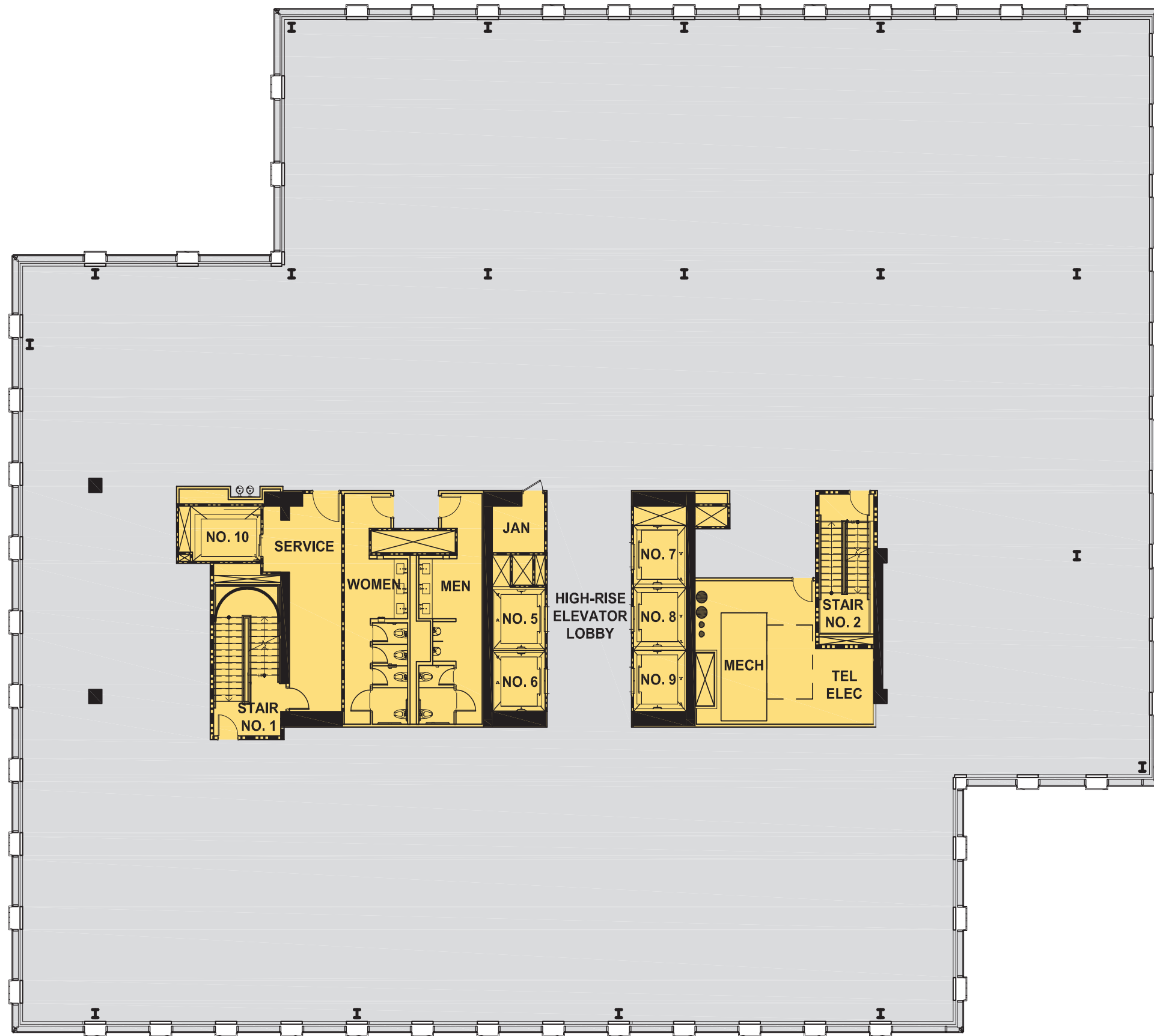
LEVEL 22
24,370 SF



LEVEL 23
23,810 SF

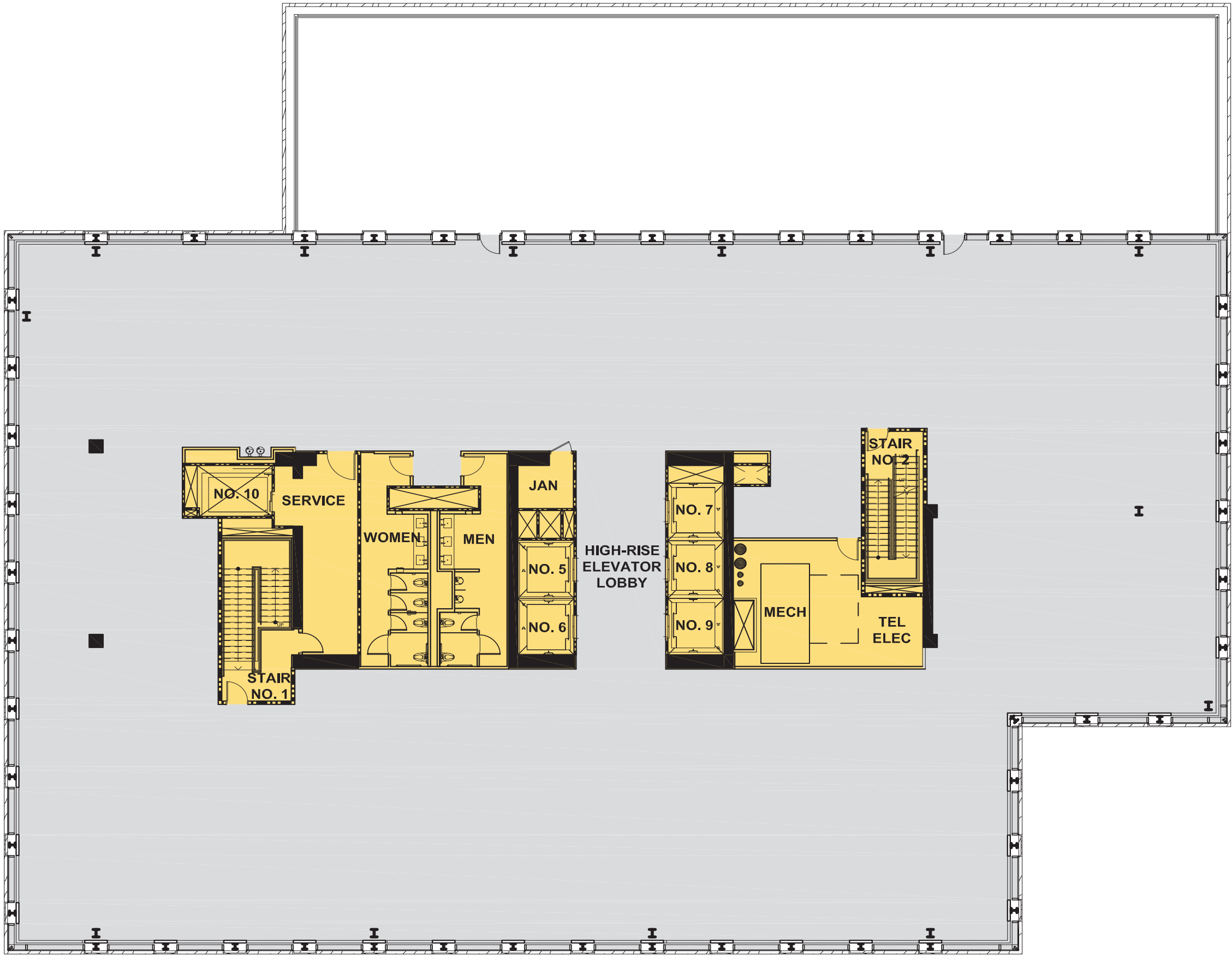


LEVELS 24-26
21,790 SF



LEVEL 27

19,060 SF



THE MIDTOWNE

LEASING PACKAGE

2022

1155 PEACHTREE STREET
ATLANTA, GEORGIA 30309

THE MIDTOWNE

