

For Lease

CBRE

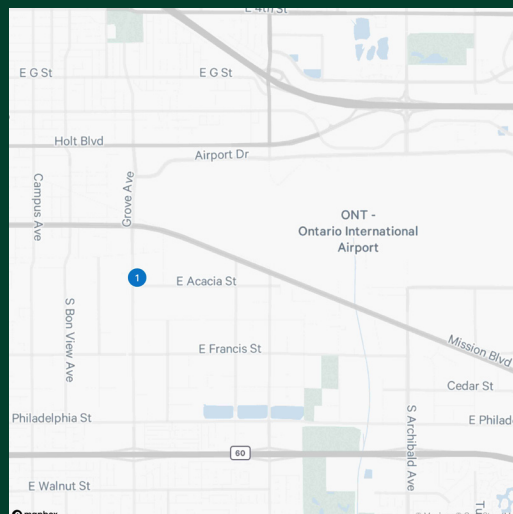
Industrial Showroom

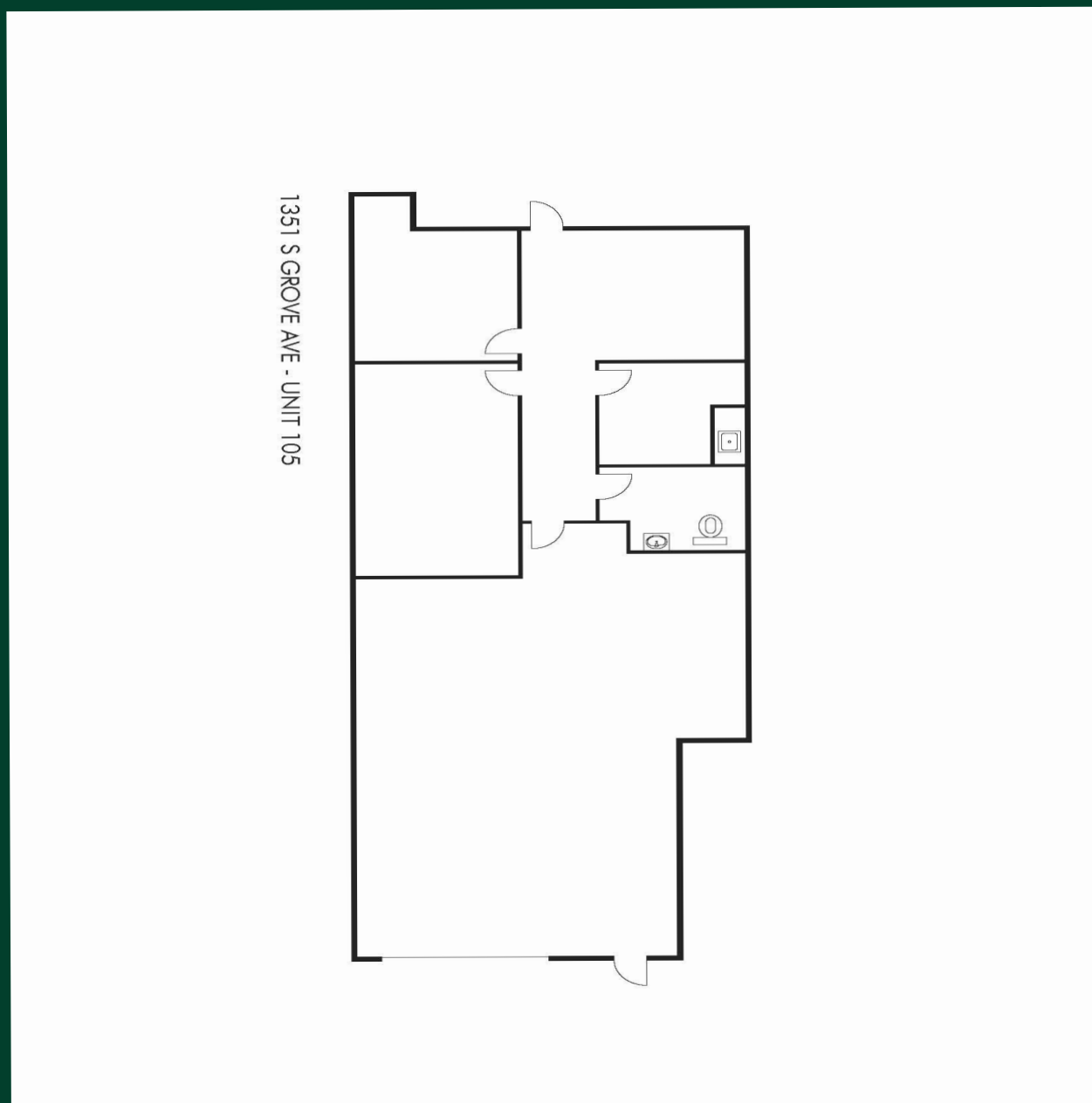
1351 S Grove Avenue, Unit 105, Ontario, CA 91761



Property Highlights

- 1,931 SF of Industrial Showroom
- 739 SF of Office Space
- 16' Minimum Warehouse Height
- Large Grade Level Loading Door
- Main Street Frontage Along Grove Avenue
- Ample 4:1,000 SF Parking Ratio
- Business Park Zoning Allows for Industrial, Flex and Office Applications (Tenant to Verify with City)





Contact Us

Nicholas Chang

Senior Vice President

+1 909 418 2014

Nicholas.Chang@cbre.com

Lic. 01344844

Richard Lee

Senior Vice President

+1 909 418 2010

Richard.Lee@cbre.com

Lic. 01757870

Justin Kuehn

First Vice President

+1 909 418 2013

Justin.Kuehn@cbre.com

Lic. 01966182

Sione Fua

Vice President

+1 909 418 2007

Sione.Fua@cbre.com

Lic. 02006432

© 2021 CBRE, Inc. All rights reserved. This information has been obtained from sources believed reliable, but has not been verified for accuracy or completeness. You should conduct a careful, independent investigation of the property and verify all information. Any reliance on this information is solely at your own risk. CBRE and the CBRE logo are service marks of CBRE, Inc. All other marks displayed on this document are the property of their respective owners, and the use of such logos does not imply any affiliation with or endorsement of CBRE. Photos herein are the property of their respective owners. Use of these images without the express written consent of the owner is prohibited.