

# TOK

COMMERCIAL

# 110 W MAIN STREET

OFFICE PROPERTY FOR LEASE | BOISE, ID 83712



## KEKAULA KANIHO

208.947.0853

kekaula@tokcommercial.com

## HIGHLIGHTS

Prime location in the heart of downtown on Main Street near St. Luke's downtown campus.

Walkable access to restaurants, coffee shops, retail, and other business services.

Historic building, built in 1905, with charming 2025 remodel.

Rare opportunity to lease fully furnished turn-key executive office space. Tenants to set up their own wifi.

Free on-site and street parking available.

24/7 access to building and tenant offices.

## SUITES:

Second Floor

Basement Level

## RSF:

500 SF

500 - 2,133 SF

## RATE:

\$800/Mo.

\$900 - \$3,300/Mo.

## BLDG. SIZE:

6,420 SF

## PROPERTY TYPE:

Executive Suites

## UTILITIES:

All included

## AVAILABILITY:

Immediately

## CONTACT



UPDATED: 1.12.2026

THIS PROPERTY IS EXCLUSIVELY MARKETED BY TOK BOISE LLC DBA TOK COMMERCIAL

This information was obtained from sources believed reliable but cannot be guaranteed. Any opinions or estimates are used for example only.

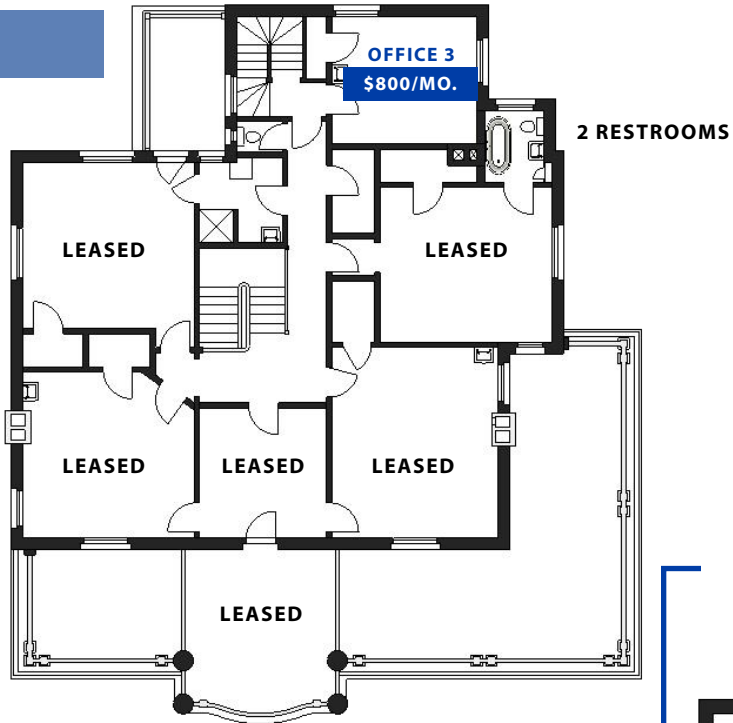


## DETAILS

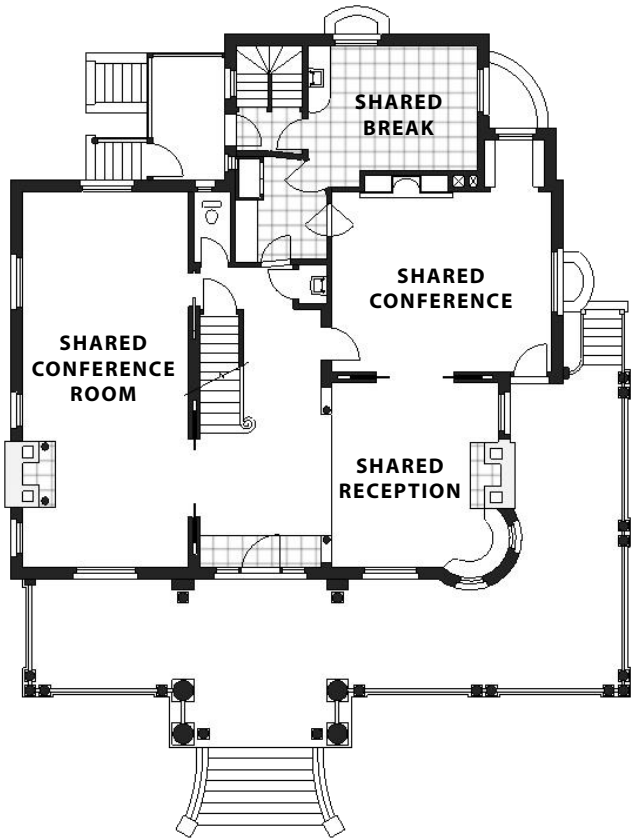


**TOK**COMMERCIAL.COM

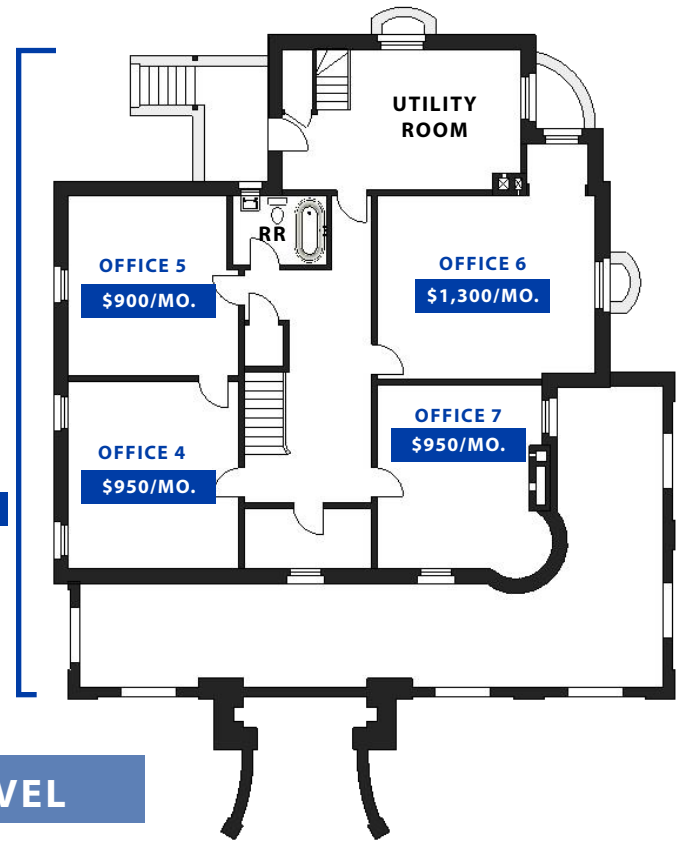
**SECOND FLOOR**



**GROUND FLOOR**



**FULL BASEMENT**  
\$3,300/MO.



**BASEMENT LEVEL**



GROUND FLOOR | COMMON AREAS



TOK  
COMMERCIAL



UPDATED: 1.12.2026

THIS PROPERTY IS EXCLUSIVELY MARKETING BY TOK BOISE LLC DBA TOK COMMERCIAL

This information was obtained from sources believed reliable but cannot be guaranteed. Any opinions or estimates are used for example only.

TOKCOMMERCIAL.COM



**GROUND FLOOR | COMMON AREAS**



**UPDATED: 1.12.2026**

THIS PROPERTY IS EXCLUSIVELY MARKETED BY TOK BOISE LLC DBA TOK COMMERCIAL

This information was obtained from sources believed reliable but cannot be guaranteed. Any opinions or estimates are used for example only.



SECOND FLOOR | OFFICES



UPDATED: 1.12.2026

THIS PROPERTY IS EXCLUSIVELY MARKETED BY TOK BOISE LLC DBA TOK COMMERCIAL  
This information was obtained from sources believed reliable but cannot be guaranteed. Any opinions or estimates are used for example only.



**BASEMENT LEVEL | OFFICES**



**TOK**  
COMMERCIAL



**UPDATED: 1.12.2026**

THIS PROPERTY IS EXCLUSIVELY MARKETED BY TOK BOISE LLC DBA TOK COMMERCIAL

This information was obtained from sources believed reliable but cannot be guaranteed. Any opinions or estimates are used for example only.

**TOK**COMMERCIAL.COM



**BODO**

THE STILL, Cafe Waves, PF CHANGS, WAREHOUSE FRESH MEATS, BONEFISH GRILL, LIQUID, FIVE GUYS, SLOW BY SLOW

Yump Simplot

**RESTAURANT ROW**

RED BEANER, Eureka!, FORK, JUNIPER, THE BUCKY

**THE FOWLER**

WYLDER, FORM & FUNCTION, BB

Marriott, MOD PIZZA, TRADER JOE'S, PANDA EXPRESS, SUSHI TRAIN

WinCo FOODS

ADA COUNTY COURTHOUSE

**SITE**

IDAHO STATE CAPITOL

WHOLE FOODS

Vandal's

AT&T, STRETCH LAB, ZUPAS, BANANO, TIN ROOF RESTAURANT

St Luke's

IDAHO ELKS REHAB

Broadway Ave

DONA LARSON PARK

FORT BOISE PARK