

FOR LEASE > OFFICE

# 2843 EYDE PARKWAY

EAST LANSING, MI 48823



## PROPERTY HIGHLIGHTS:

- OFFICE SPACE AVAILABLE
  - 5,784 SF FIRST FLOOR
  - 17,512 SF SECOND FLOOR
- TWO-STORY CLASS A OFFICE BUILDING
- ACROSS FROM MICHIGAN STATE UNIVERSITY
- SHORT DRIVE TO I-69, US-127 AND I-96
- WALKING DISTANCE TO RESTAURANTS, THE MICHIGAN ATHLETIC CLUB AND SPARROW HEALTH SCIENCE PAVILION
- FULL SERVICE LEASES
- PROFESSIONAL ON SITE MAINTENANCE STAFF
- TURN KEY OFFICES DESIGNED TO YOUR SPECIFICATIONS. PROFESSIONAL DESIGN SERVICE INCLUDED.
- CAN ACCOMMODATE LABORATORIES

## EYDE COMPANY

2947 Eyde Parkway | Suite #200  
East Lansing, MI 48823  
Phone: 517-819-0338

For More Information:

JIM RUNDALL

[jim.rundell@eydecompany.com](mailto:jim.rundell@eydecompany.com)



[www.eydecompany.com](http://www.eydecompany.com)

FOR LEASE > OFFICE

**2843 EYDE PARKWAY**

EAST LANSING, MI 48823



> EXTERIOR PROPERTY PHOTOS



**JIM RUNDELL**  
jim.rundell@eydecompany.com  
www.eydecompany.com



**EYDE COMPANY**  
2947 Eyde Parkway | Suite #200  
East Lansing, MI 48823  
Phone: 517-351-2480

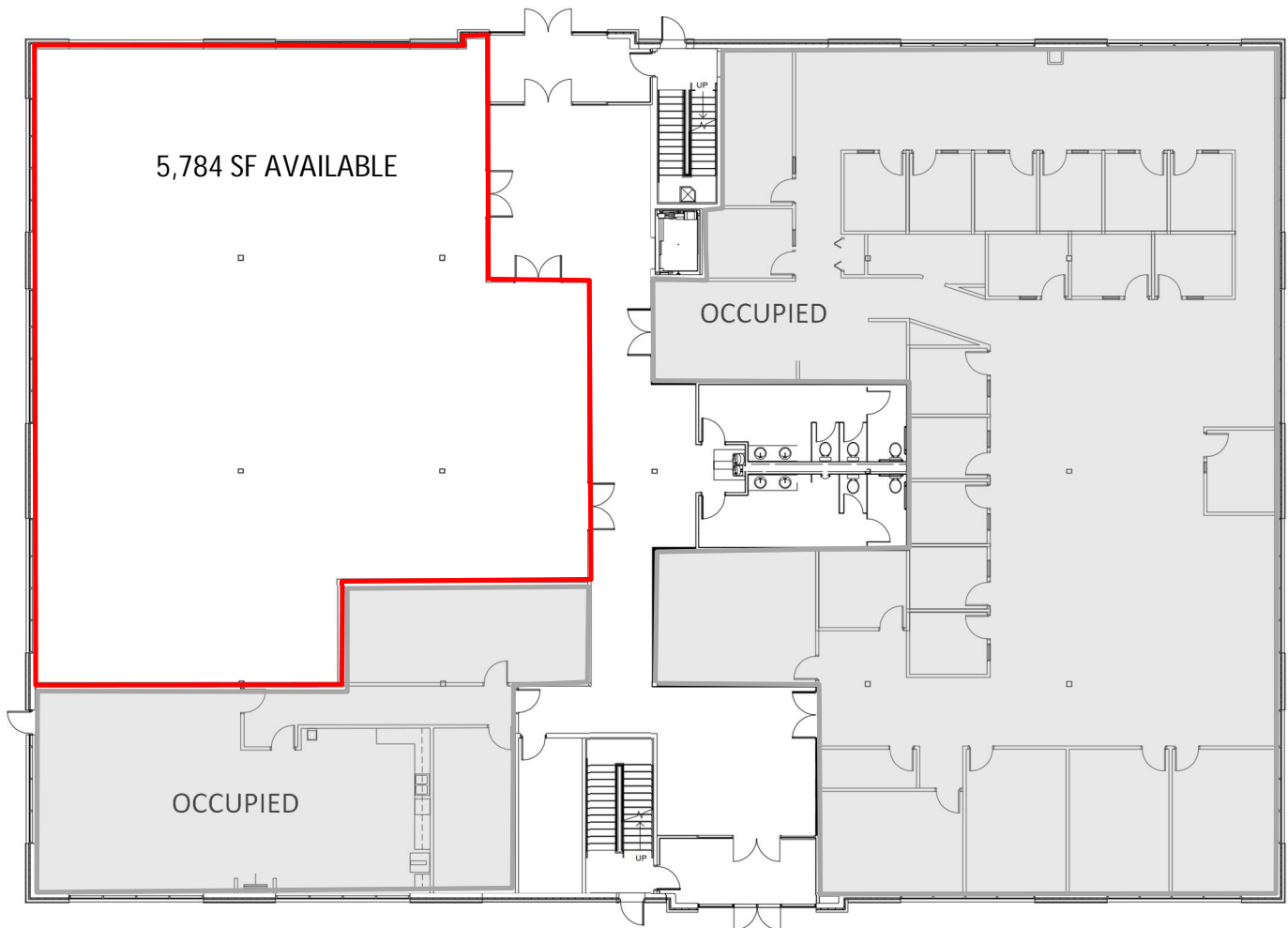
FOR LEASE > OFFICE

# 2843 EYDE PARKWAY

EAST LANSING, MI 48823



## > FIRST FLOOR PLAN



**JIM RUNDELL**  
jim.rundell@eydecompany.com  
www.eydecompany.com



**EYDE COMPANY**  
2947 Eyde Parkway | Suite #200  
East Lansing, MI 48823  
Phone: 517-351-2480

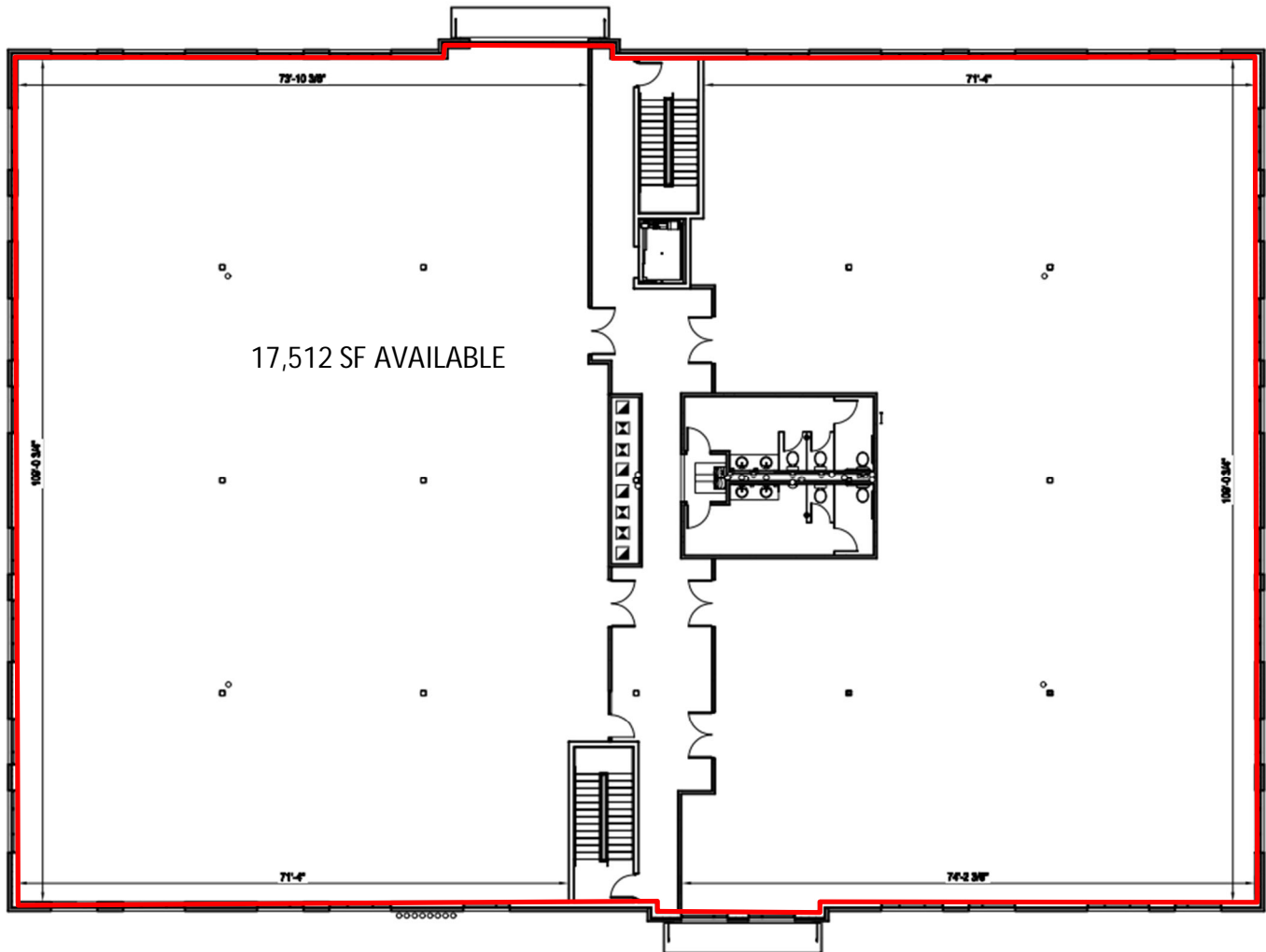
FOR LEASE > OFFICE

# 2843 EYDE PARKWAY

EAST LANSING, MI 48823



## > SECOND FLOOR PLAN



**JIM RUNDELL**

[jim.rundell@eydecompany.com](mailto:jim.rundell@eydecompany.com)

[www.eydecompany.com](http://www.eydecompany.com)



**EYDE COMPANY**

2947 Eyde Parkway | Suite #200

East Lansing, MI 48823

Phone: 517-351-2480

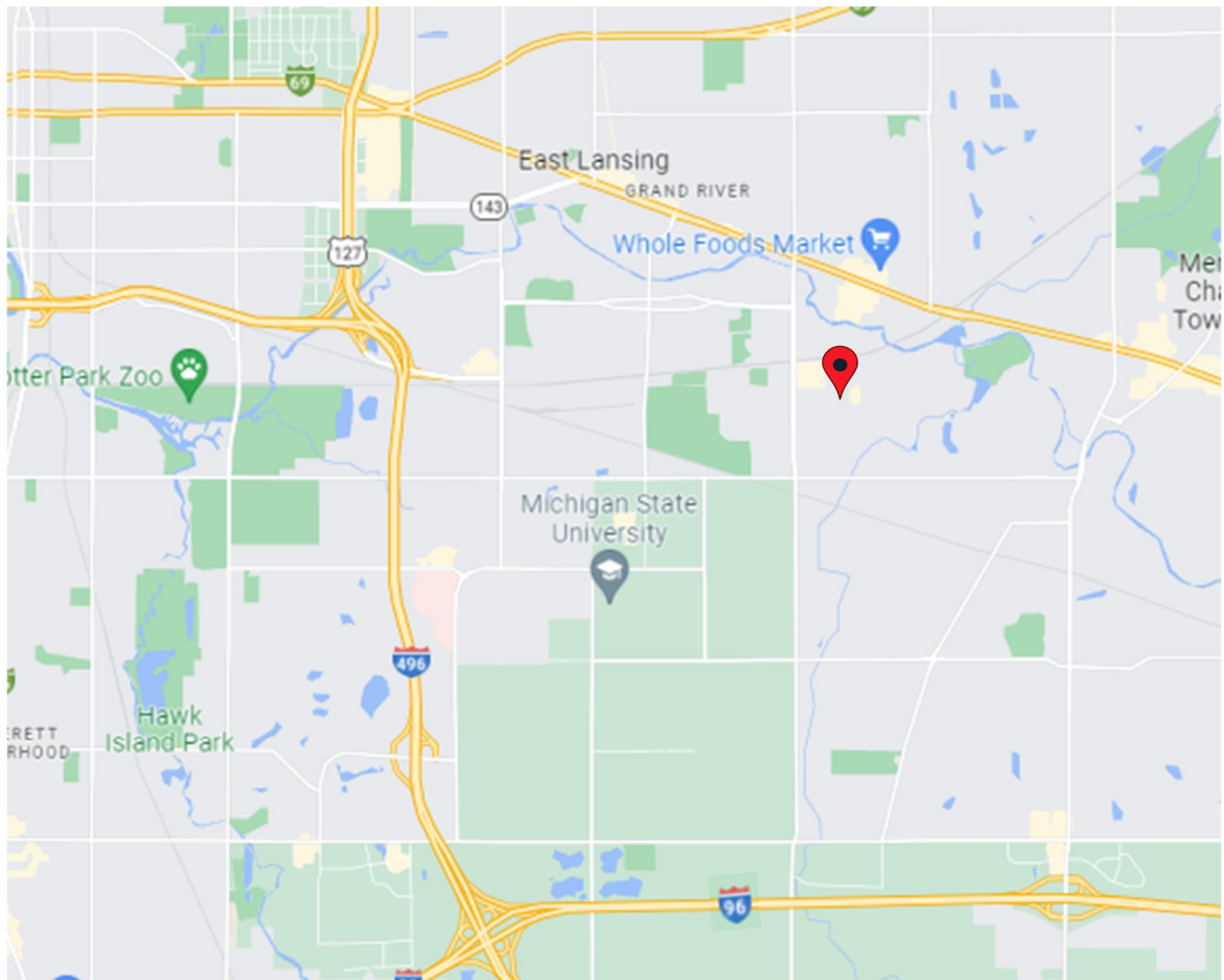
FOR LEASE > OFFICE

# 2843 EYDE PARKWAY

EAST LANSING, MI 48823



## > AERIAL MAP



**JIM RUNDELL**

[jim.rundell@eydecompany.com](mailto:jim.rundell@eydecompany.com)

[www.eydecompany.com](http://www.eydecompany.com)



**EYDE COMPANY**

2947 Eyde Parkway | Suite #200

East Lansing, MI 48823

Phone: 517-351-2480

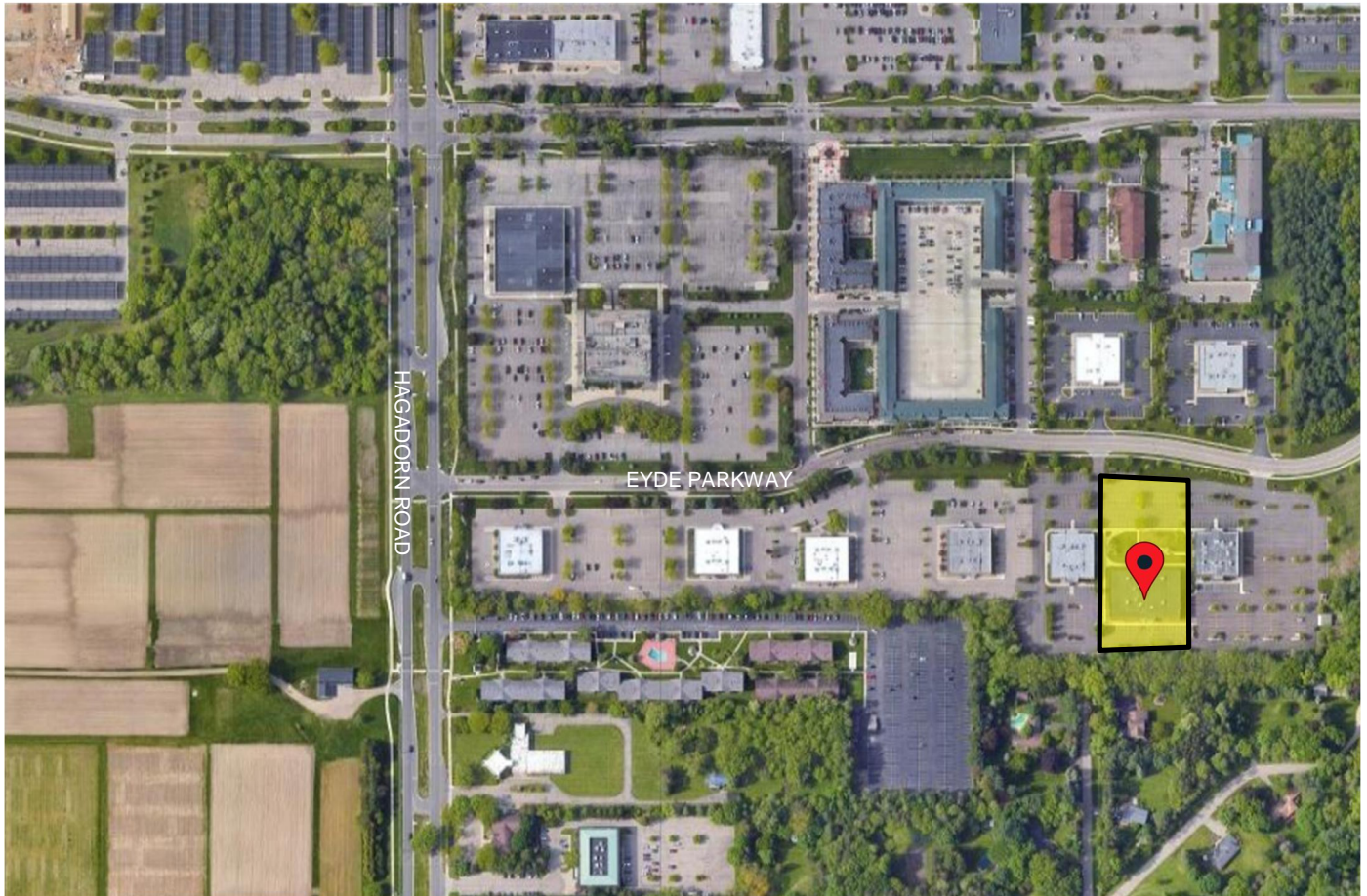
FOR LEASE > OFFICE

# 2843 EYDE PARKWAY

EAST LANSING, MI 48823



## > AERIAL MAP



**JIM RUNDELL**

[jim.rundell@eydecompany.com](mailto:jim.rundell@eydecompany.com)

[www.eydecompany.com](http://www.eydecompany.com)



**EYDE COMPANY**

2947 Eyde Parkway | Suite #200

East Lansing, MI 48823

Phone: 517-351-2480