

# Available for Sale

## 2236 Ridge Road West



- **Address:** 2236 Ridge Road West
- **Location:** Across the street from The Mall at Greece Ridge
- **Town/County:** Town of Greece
- **Zoning:** BR– Restricted Business Click [HERE](#) for Code information
- **Taxes:** Town & County: \$9,695.00, School: \$9,799.00
- **Land Area:** 0.39 Acres
- **Building Size:** 3,450 Square Feet
- **Sale/Lease Price:** \$850,000.00
- **Description:** Currently used as a medical office with patient space on the first floor and Administrative functions on the ground floor. Other possible uses include service uses, hospitality uses and retail uses. See Zoning link above for specific information.

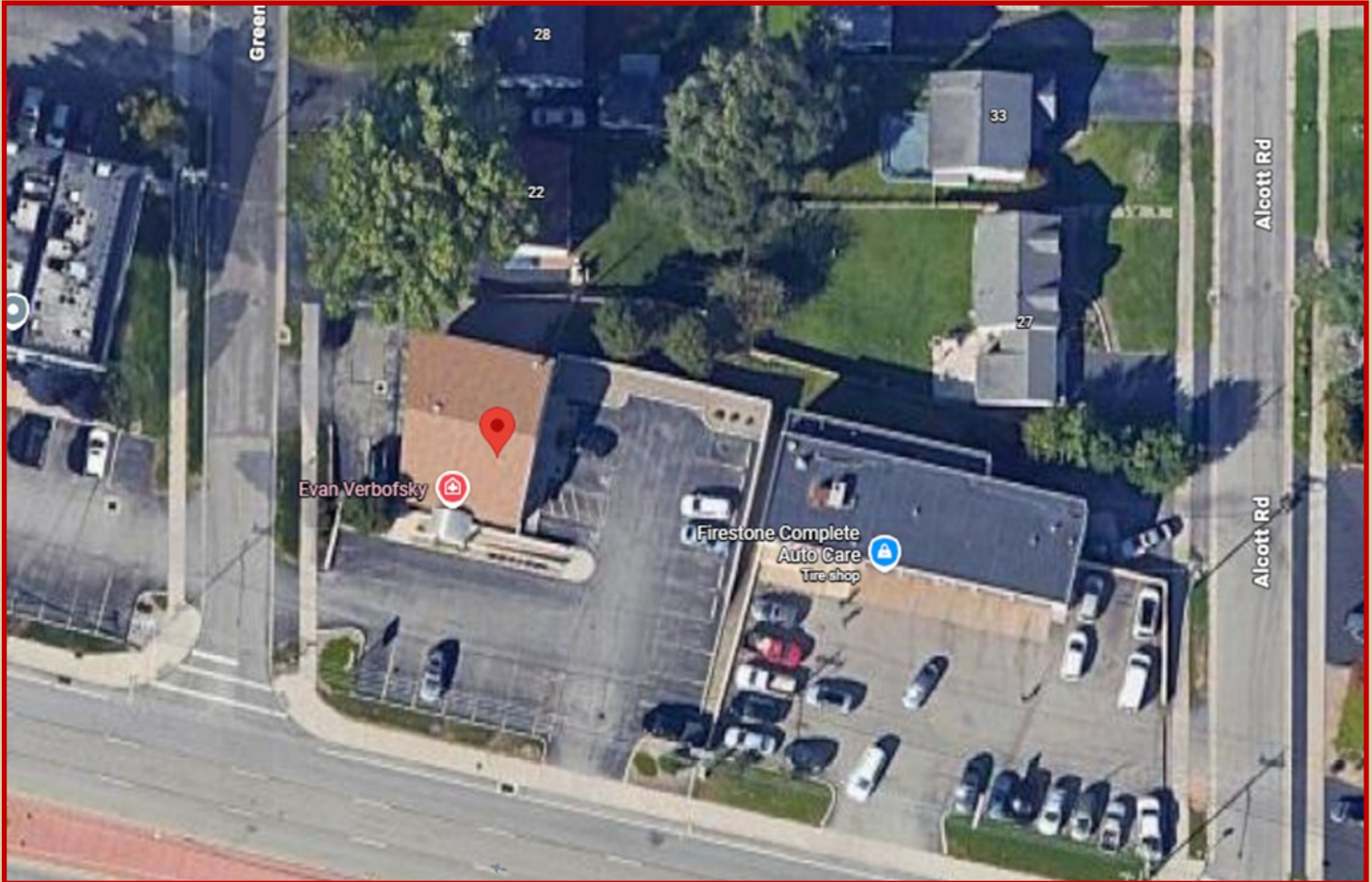
Commercial  
Industrial  
Investment  
Real Estate

**MISSION**  
**COMMERCIAL REALTY**

Brokerage  
Leasing  
Management  
Consulting

# Aerial Photograph

## 2236 Ridge Road West



Commercial  
Industrial  
Investment  
Real Estate

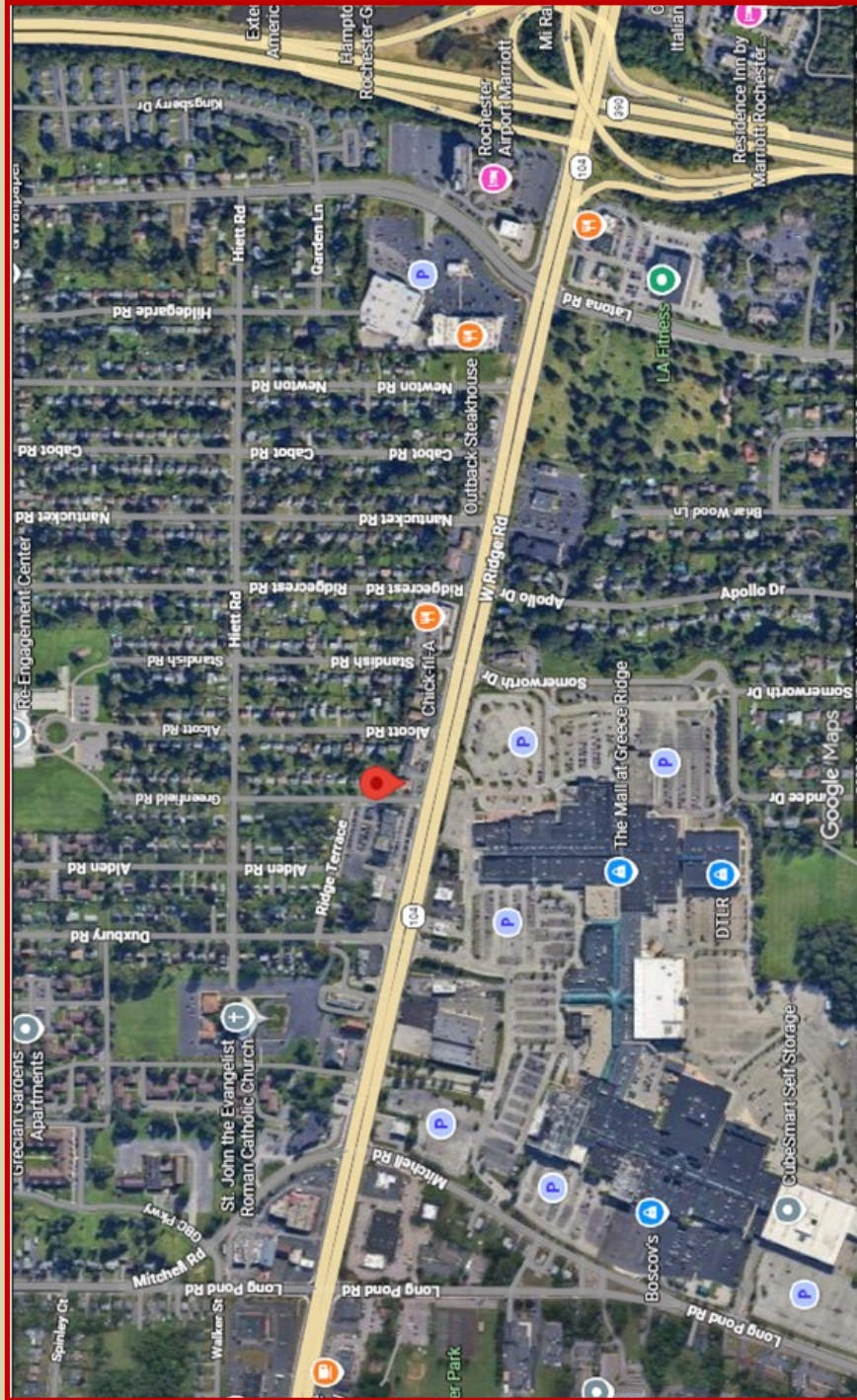
**MISSION**  
**COMMERCIAL REALTY**

Brokerage  
Leasing  
Management  
Consulting



# Neighborhood Aerial Photograph

## 2236 Ridge Road West



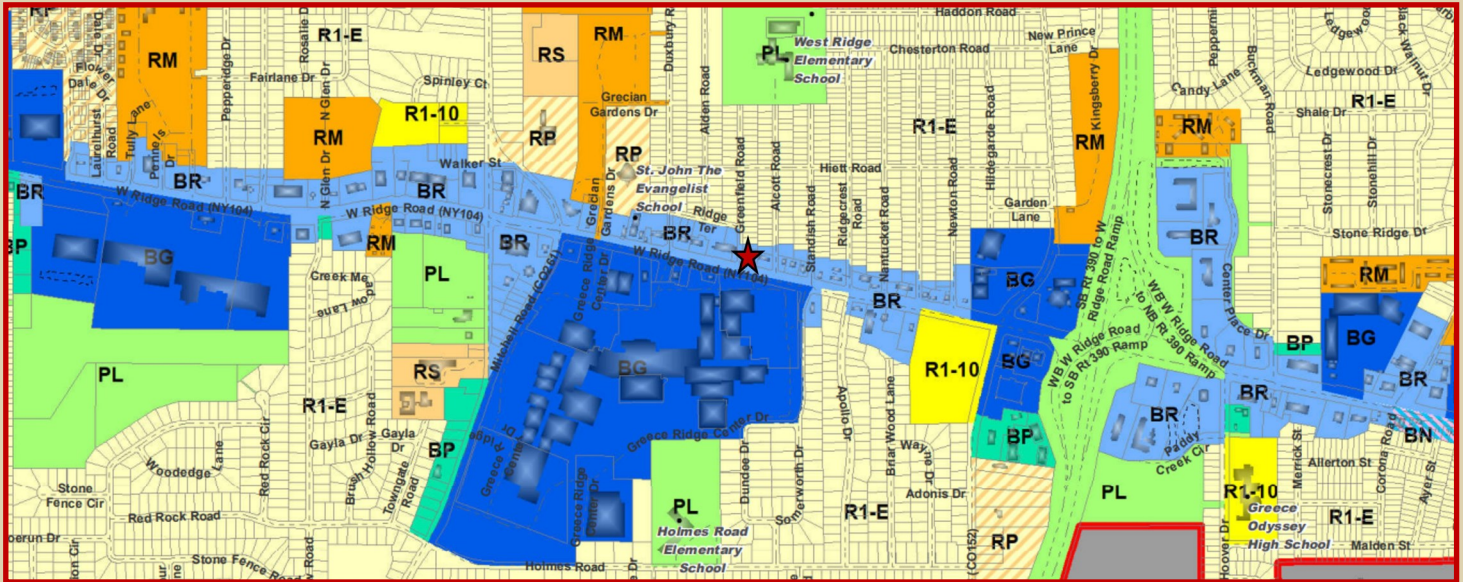
Commercial  
Industrial  
Investment  
Real Estate

**MISSION**  
COMMERCIAL REALTY

Brokerage  
Leasing  
Management  
Consulting

# Zoning Map

## 2236 Ridge Road West



Commercial  
Industrial  
Investment  
Real Estate

**MISSION**  
COMMERCIAL REALTY

Brokerage  
Leasing  
Management  
Consulting