

FOR LEASE



MINNETONKA CORPORATE CENTER

12800 & 12900 WHITEWATER DRIVE, MINNETONKA, MN



VIRTUAL TOUR

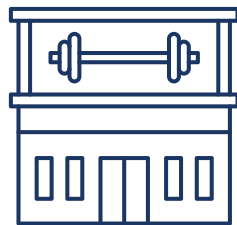
PROPERTY HIGHLIGHTS

- First-class Minnetonka location
 - Class A amenity package
 - Park-like setting complete with biking and walking trails
 - Superior access to Hwy. 62 and I-494
- Availabilities:
 - Suite 101 3,328 RSF
 - Suite 140 6,219 RSF
 - Suite 300 19,539 RSF

AMENITIES



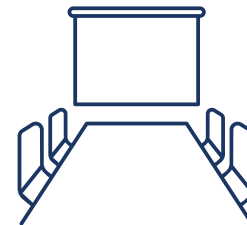
Tenant Lounges



Large Fitness Center with showers



Covered patio with direct access to Events space



Large Conference/Training Room



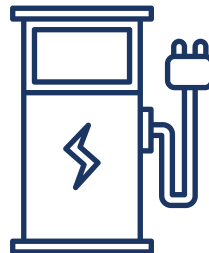
Board Room



Wellness/Mother's Room



Grab-n-Go Market



EV Charging Stations



Covered Parking



Bike Room

PROPERTY AMENITIES



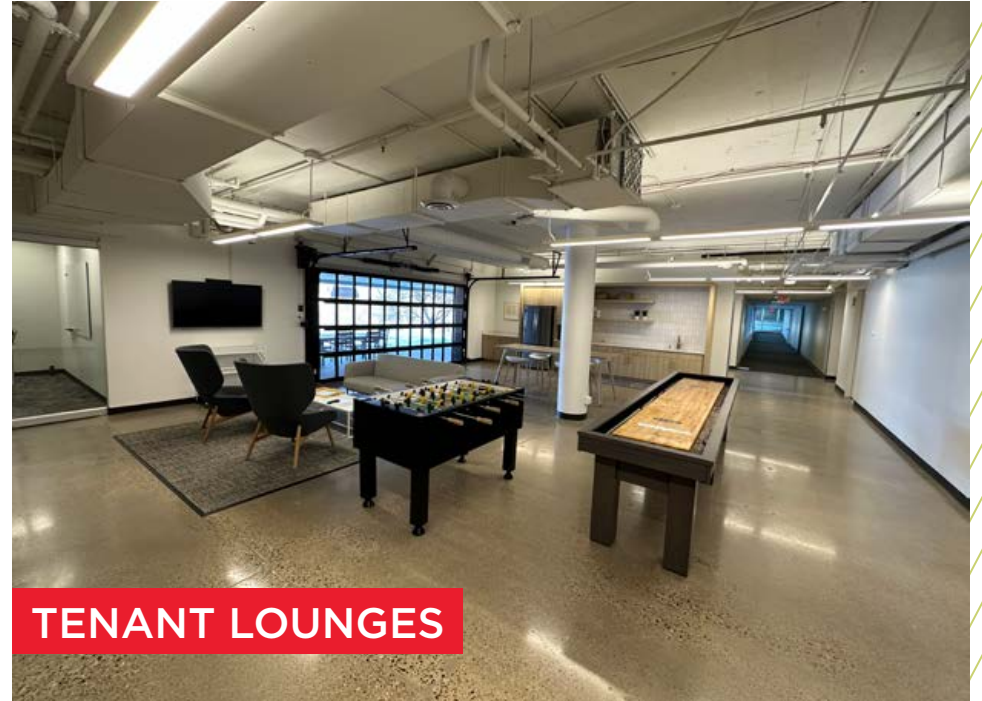
PROPERTY AMENITIES



LARGE CONFERENCE/TRAINING ROOM



BOARD ROOM



TENANT LOUNGES



BIKE ROOM

PROPERTY AMENITIES



WELLNESS/MOTHER'S ROOM

GRAB-N-GO MARKET

FITNESS CENTER

NEW COMMON AREA FINISH



LOCATION
AERIAL

CONTACT INFORMATION

AARON BARNARD, SIOR, CCIM

Senior Director

+1 952 465 3372

aaron.barnard@cushwake.com

RYAN HAMPSON

Senior Associate

+1 952 465 3309

ryan.hampson@cushwake.com

cushmanwakefield.com



©2023 Cushman & Wakefield. All rights reserved. The information contained in this communication is strictly confidential. This information has been obtained from sources believed to be reliable but has not been verified. NO WARRANTY OR REPRESENTATION, EXPRESS OR IMPLIED, IS MADE AS TO THE CONDITION OF THE PROPERTY (OR PROPERTIES) REFERENCED HEREIN OR AS TO THE ACCURACY OR COMPLETENESS OF THE INFORMATION CONTAINED HEREIN, AND SAME IS SUBMITTED SUBJECT TO ERRORS, OMISSIONS, CHANGE OF PRICE, RENTAL OR OTHER CONDITIONS, WITHDRAWAL WITHOUT NOTICE, AND TO ANY SPECIAL LISTING CONDITIONS IMPOSED BY THE PROPERTY OWNER(S). ANY PROJECTIONS, OPINIONS OR ESTIMATES ARE SUBJECT TO UNCERTAINTY AND DO NOT SIGNIFY CURRENT OR FUTURE PROPERTY PERFORMANCE.