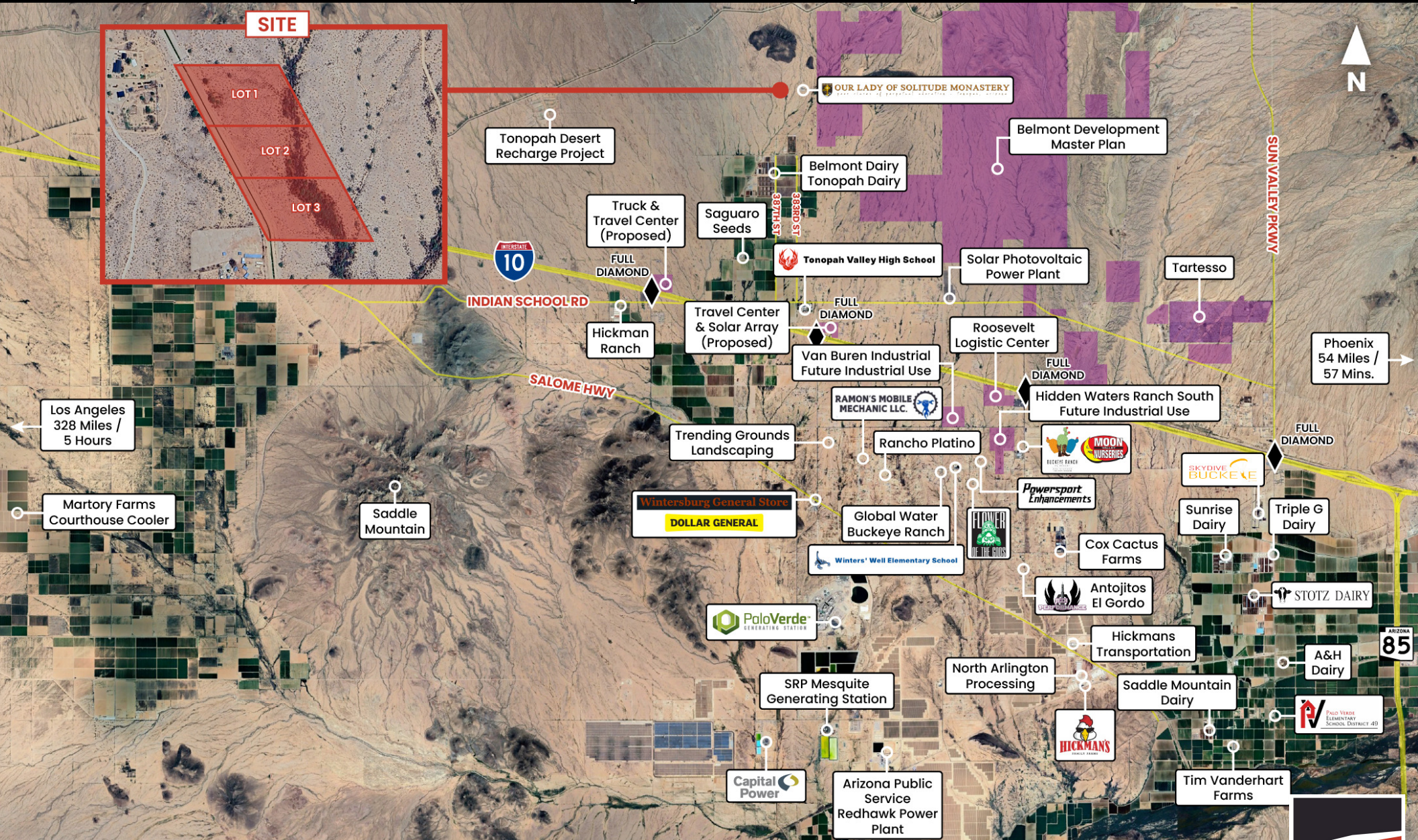


TONOPAH LAND – ±16 ACRES

506-39-056E | TONOPAH, AZ 85354



Beth Jo Zeitzer
CEO - Designated Broker
602.319.1326
bjz@roiproperties.com

Jake Vice
Commercial Associate
480.273.0212
jvice@roiproperties.com

Tommy Moore
Commercial Associate
602.397.4886
tmoore@roiproperties.com

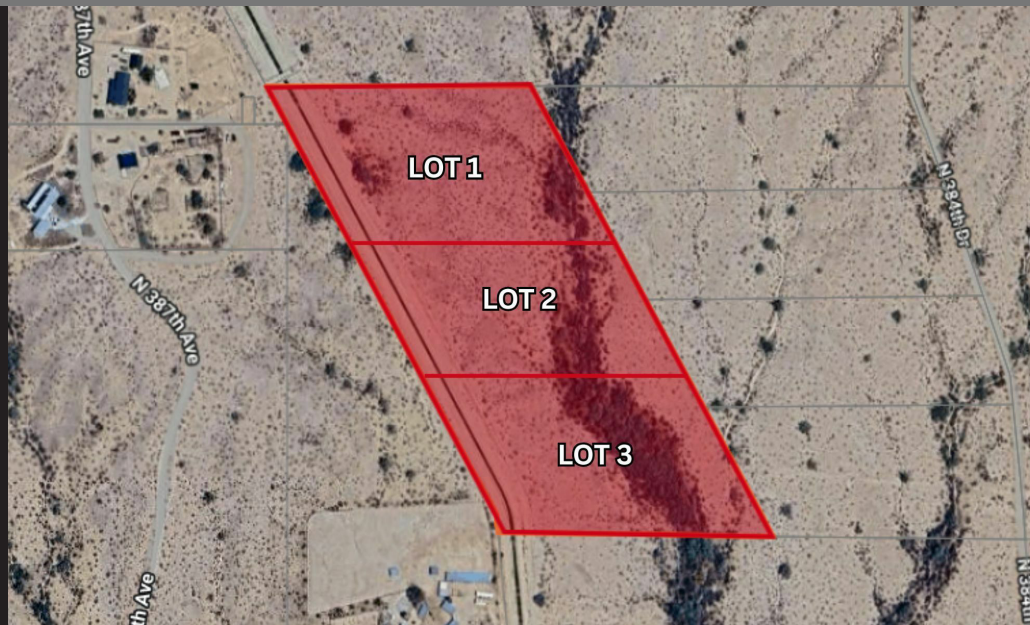
R.O.I. Properties
3333 E Camelback Rd, Ste 252
Phoenix, AZ 85018
www.roiproperties.com



TONOPAH SPEC LAND – COYOTE RIDGE

PARCEL 506-39-056E, TONOPAH, AZ 85354

FOR SALE



OFFERING SUMMARY

Lot #:	Size:	Price:	Price/AC:	Status:
1	±5 AC	\$65,000	\$13,000	Available
2	±5 AC	\$65,000	\$13,000	Available
3	±6 AC	\$69,000	\$11,500	Available

PROPERTY OVERVIEW

Located between N 384th Dr. and N 387th Ave, approximately 6.5 miles north of Indian School Rd, this ±16-acre parcel is zoned R-190 and bordered by a canal along its western boundary. The property is currently being split into two 5-acre parcels and one 6-acre parcel. It offers a quiet, rural setting with strong potential for future development or speculative land investment.

PROPERTY HIGHLIGHTS

- Rapidly developing area
- Speculative Land Potential
- Short drive from Goodyear / Buckeye / I-10

BETH JO ZEITZER

602.319.1326
bjz@roiproperties.com

JAKE VICE

480.273.0212
jvice@roiproperties.com

TOMMY MOORE

602.397.4886
tmoore@roiproperties.com

R.O.I. PROPERTIES

3333 E. Camelback RD | Suite 252 | Phoenix, AZ 85018
T: 602.319.1326 | F: 602.794.6389

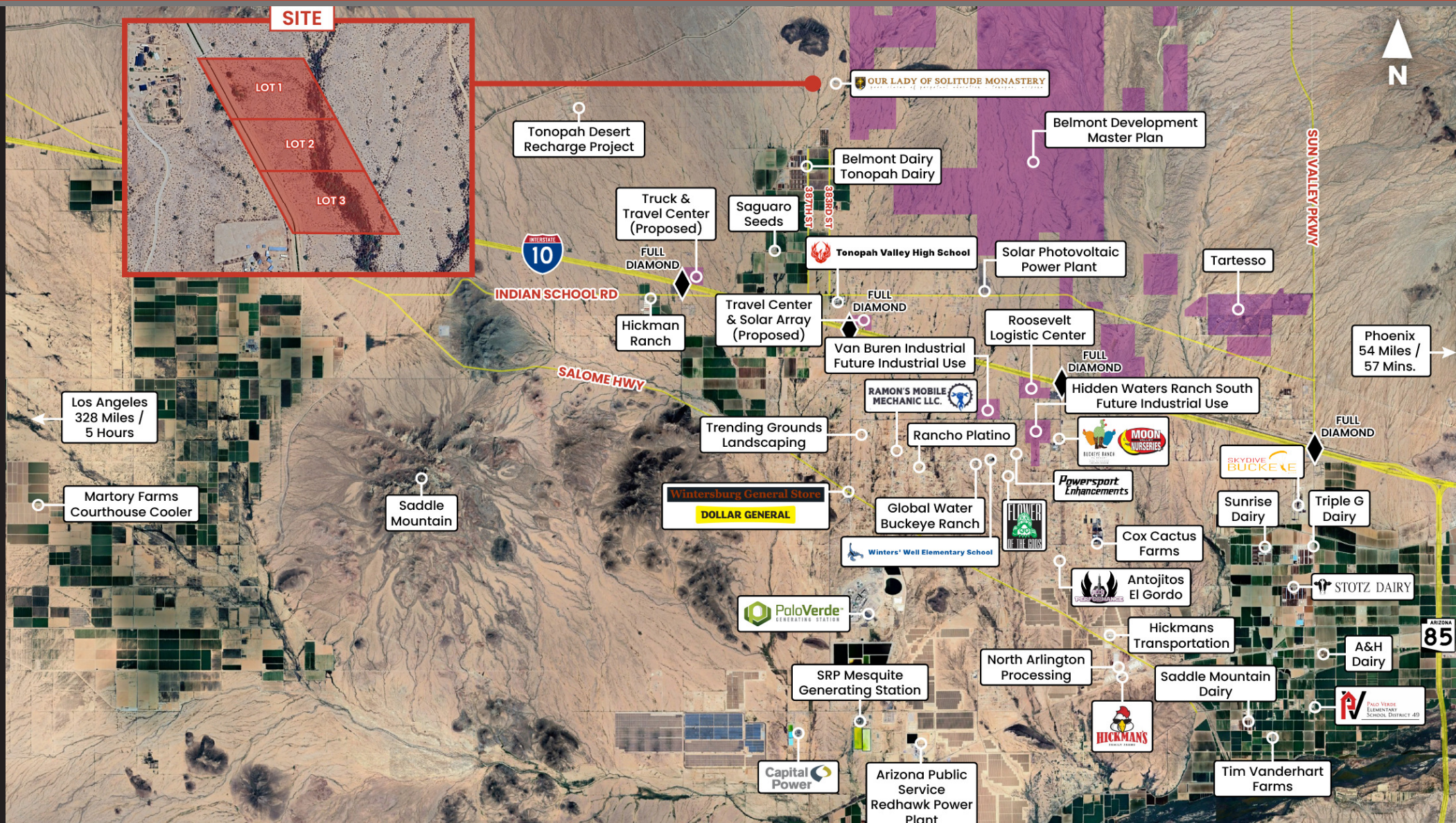
www.roiproperties.com



RAPIDLY DEVELOPING AREA - TONOPAH

PARCEL 506-39-056E, TONOPAH, AZ 85354

FOR SALE



BETH JO ZEITZER

602.319.1326

bjz@roiproperties.com

JAKE VICE

480.273.0212

jvice@roiproperties.com

TOMMY MOORE

602.397.4886

tmoore@roiproperties.com

R.O.I. PROPERTIES

3333 E. Camelback RD | Suite 252 | Phoenix, AZ 85018

T: 602.319.1326 | F: 602.794.6389

www.roiproperties.com

2025 R.O.I. Properties, LLC. All rights reserved. No warranty or representation, expressed or implied, is made to the accuracy of the information contained herein. Prices and availability subject to change without notice.



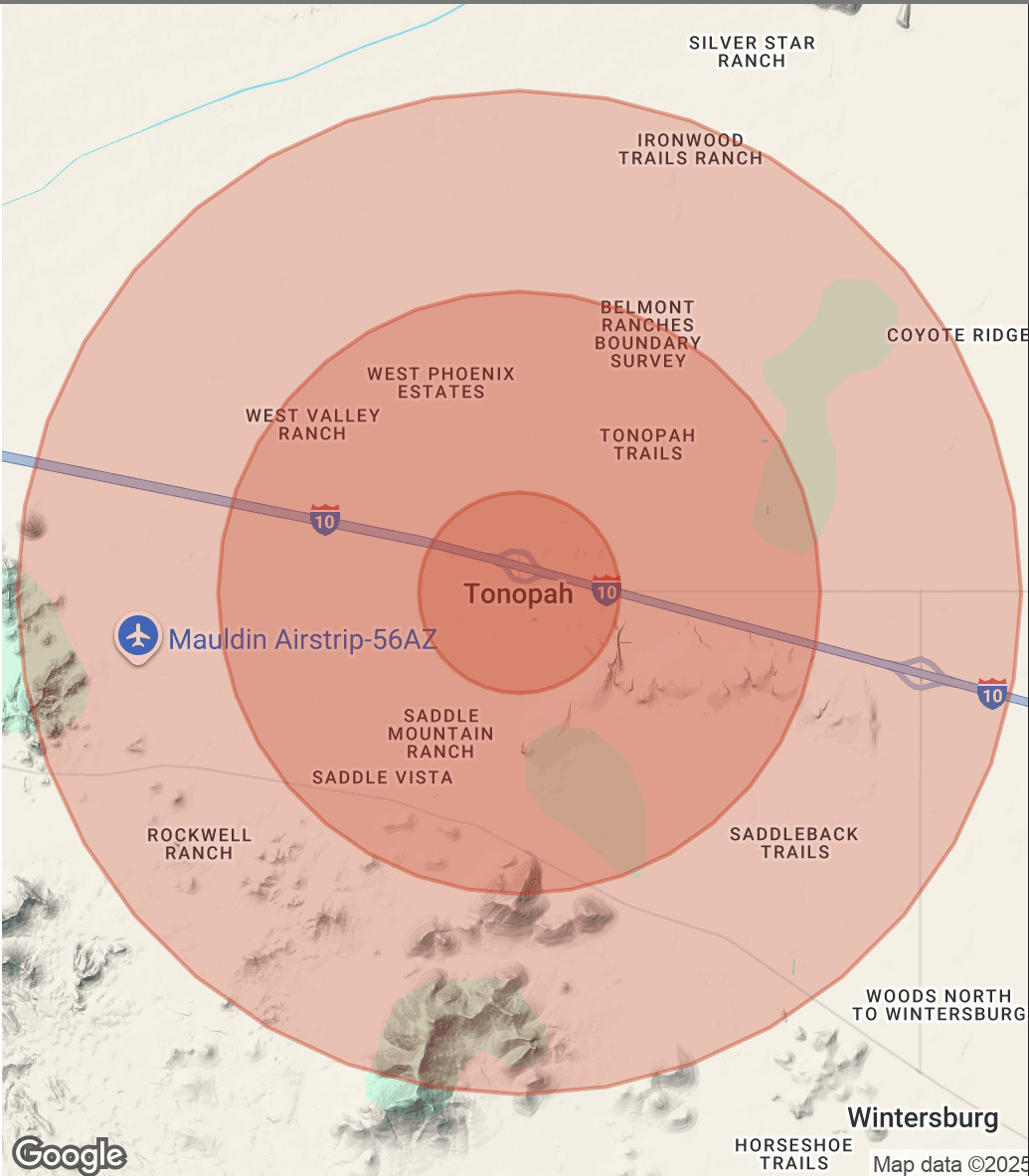
DEMOGRAPHIC SUMMARY

PARCEL 506-39-056E, TONOPAH, AZ 85354

FOR SALE

POPULATION	1 MILE	3 MILES	5 MILES
Total Population	47	494	1,722
Average Age	39	39	39
Average Age (Male)	39	38	39
Average Age (Female)	40	40	40

HOUSEHOLDS & INCOME	1 MILE	3 MILES	5 MILES
Total Households	15	163	567
# of Persons per HH	3.1	3	3
Average HH Income	\$67,915	\$78,535	\$77,708
Average House Value	\$304,885	\$323,552	\$318,614



BETH JO ZEITZER

602.319.1326
bjz@roiproperties.com

JAKE VICE

480.273.0212
jvice@roiproperties.com

TOMMY MOORE

602.397.4886
tmoore@roiproperties.com

R.O.I. PROPERTIES

3333 E. Camelback RD | Suite 252 | Phoenix, AZ 85018
T: 602.319.1326 | F: 602.794.6389

www.roiproperties.com

