

SOUTH WILLIAMSBURG, BROOKLYN, NY

99 SOUTH 3RD STREET

MOD



SPACE DETAILS

LOCATION

Corner of Berry and South 3rd Streets

SPACE

Second Floor- 10,000 SF

Basement - 9,000 SF

CEILING HEIGHT

10 Feet

POSSESSION

Immediate

ASKING RENT

Second Floor - \$46 PSF

Basement - \$32 PSF

NEIGHBORS

MOXY Hotel, Layla, PingPod, Namkeen, Mission Sandwich, Meadowsweet, Baby's All Right, Misi, Hole in the Wall, L'Industrie Pizza, Vanessa's Dumpling House

TRANSPORTATION



COMMENTS

- Second Floor Space
- Prime Location in South Williamsburg
- Proximity to Domino Sugar Factory & Waterfront Park
- Open Layout
- Multiple Offices Included
- HVAC in place
- 8 bathrooms in place
- Dedicated lobby and entrance
- Logical divisions considered

CONTACTS

MEYER DAGMY

718-249-3613

m@modcre.com

EDDIE MAMIYE

917-379-6719

e@modcre.com

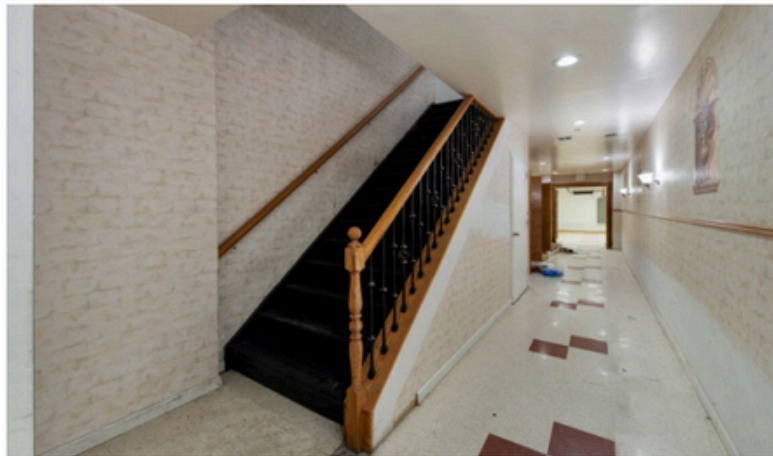
ISAAC BIJOU

718-594-6377

ib@modcre.com



LOWER LEVEL



CONTACTS

MEYER DAGMY

718-249-3613

m@modcre.com

EDDIE MAMIYE

917-379-6719

e@modcre.com

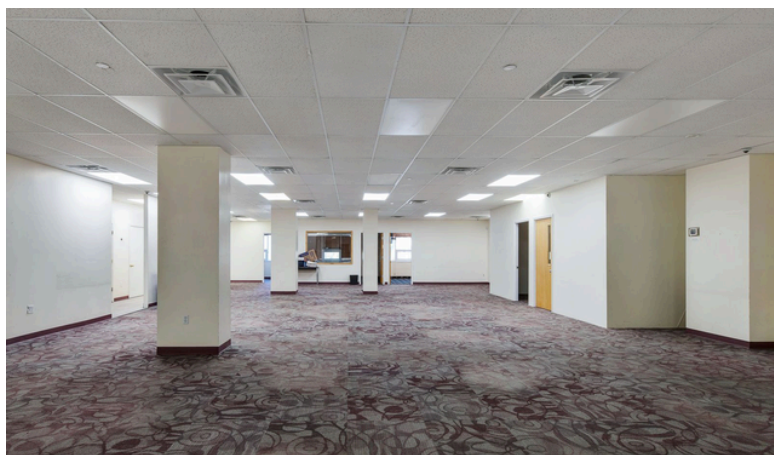
ISAAC BIJOU

718-594-6377

ib@modcre.com



SECOND FLOOR



CONTACTS

MEYER DAGMY

718-249-3613

m@modcre.com

EDDIE MAMIYE

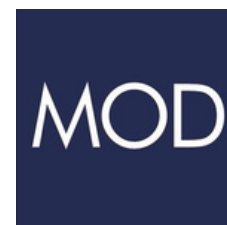
917-379-6719

e@modcre.com

ISAAC BIJOU

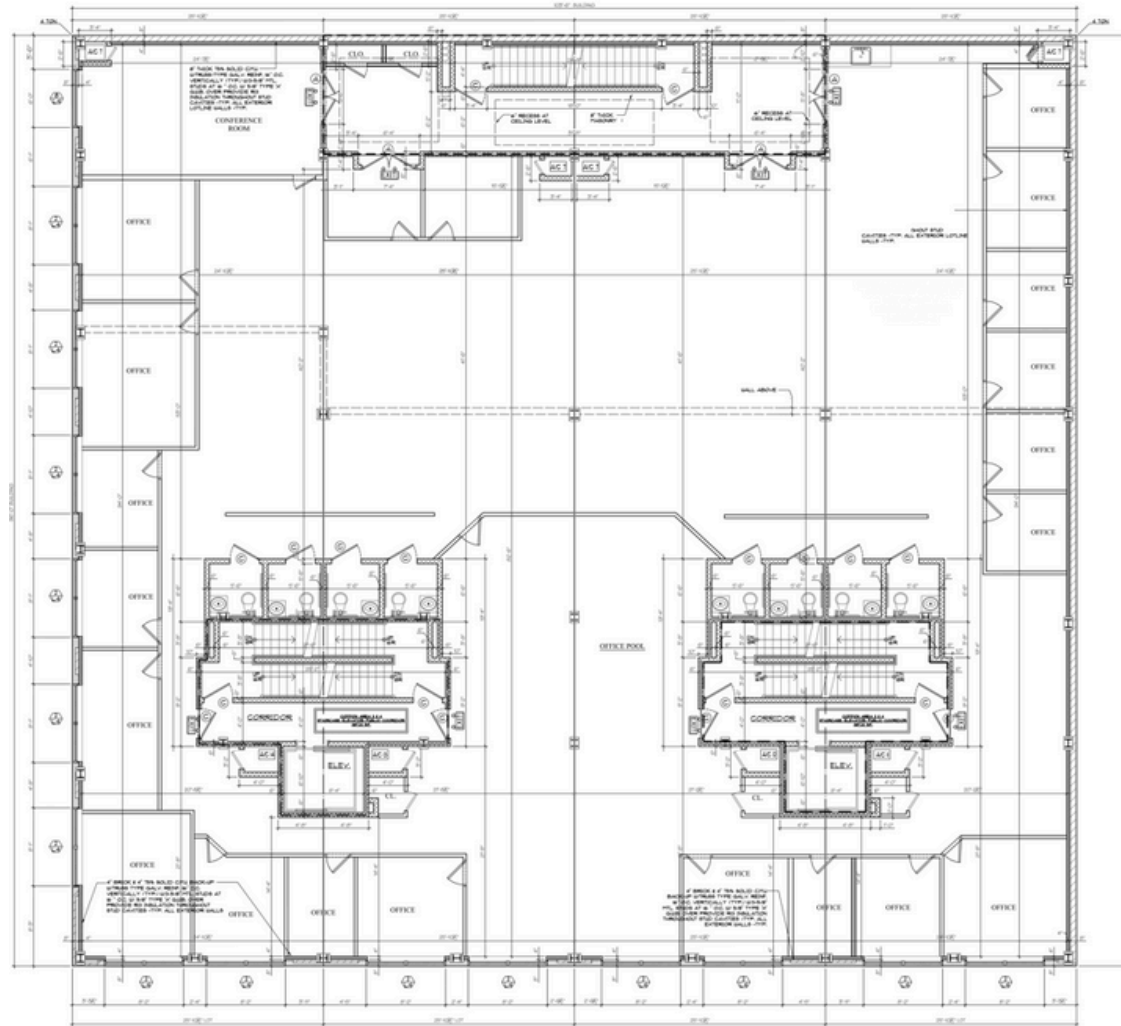
718-594-6377

ib@modcre.com



FLOOR PLAN

SECOND FLOOR



CONTACTS

MEYER DAGMY

718-249-3613

m@modcre.com

EDDIE MAMIYE

917-379-6719

e@modcre.com

ISAAC BIJOU

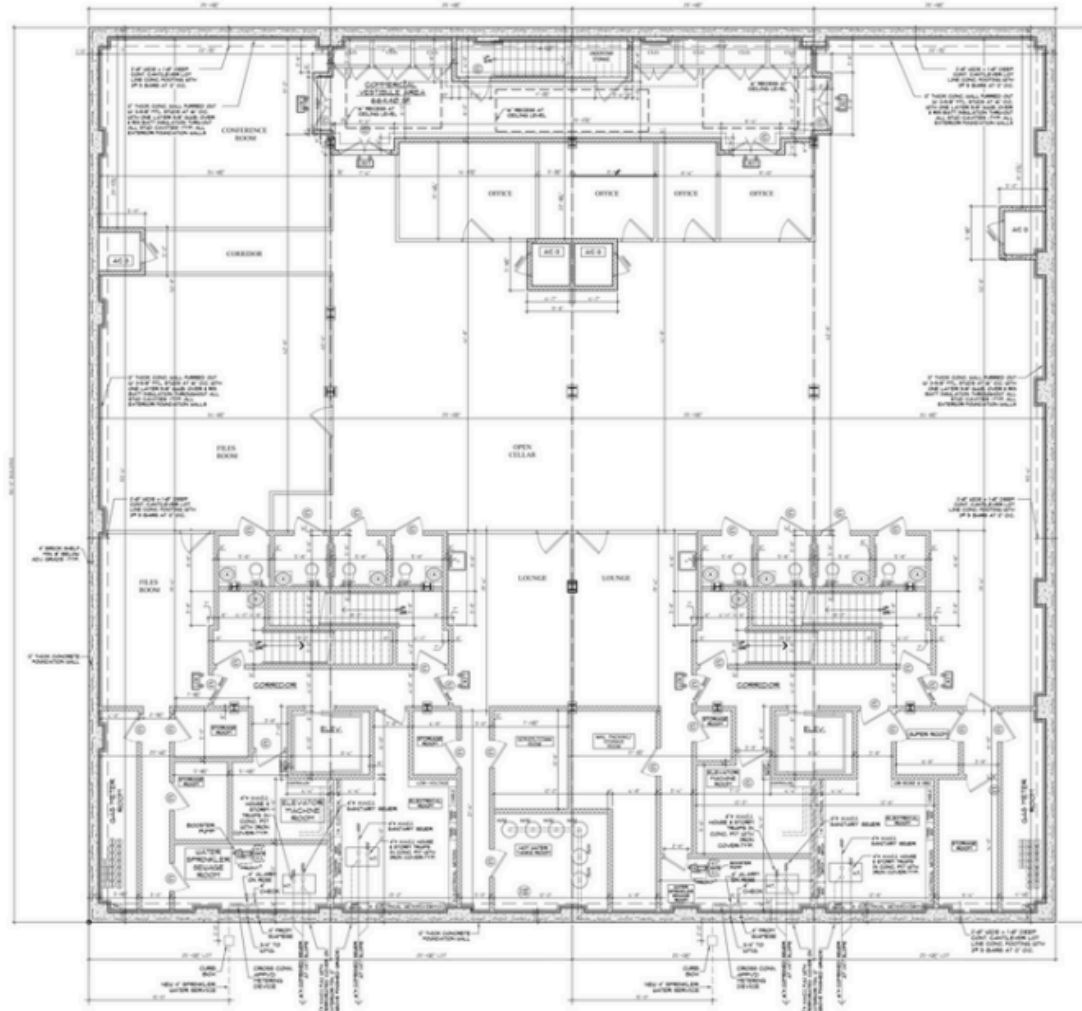
718-594-6377

ib@modcre.com



FLOOR PLAN

CELLAR FLOOR PLAN



CONTACTS

MEYER DAGMY

718-249-3613

m@modcre.com

EDDIE MAMIYE

917-379-6719

e@modcre.com

ISAAC BIJOU

718-594-6377

ib@modcre.com



AREA MAP



CONTACTS

MEYER DAGMY

718-249-3613

m@modcre.com

EDDIE MAMIYE

917-379-6719

e@modcre.com

ISAAC BIJOU

718-594-6377

ib@modcre.com

