



INCOME BASED APARTMENTS HAP Contract **FOR SALE**


225 E. Hickory
Hesston, KS 67062
(15 min from Newton))

PROPERTY INFORMATION

Price:	\$1.2 Million
Gross SF:	28,449
Total Acres:	5.55
Total Units:	30
Year Built:	1981
2024 Taxes:	\$14,605

DAVID M. LEYH, CCIM, SEC

 dleyh@ccim.net

 (316) 371-8087



APARTMENT COMPLEX FOR SALE

Section 8 income based housing
Inspection Score of 92/100 (HUD Standards)

The city of Hesston has excellent schools, 9 community parks, Dyck Arboretum, a water park, golf course, and child care.

1 Bed | 1 Bath - 618 SF
2 Bed | 1 Bath - 736 SF
3 Bed | 2 Bath - 1,152 SF

Features

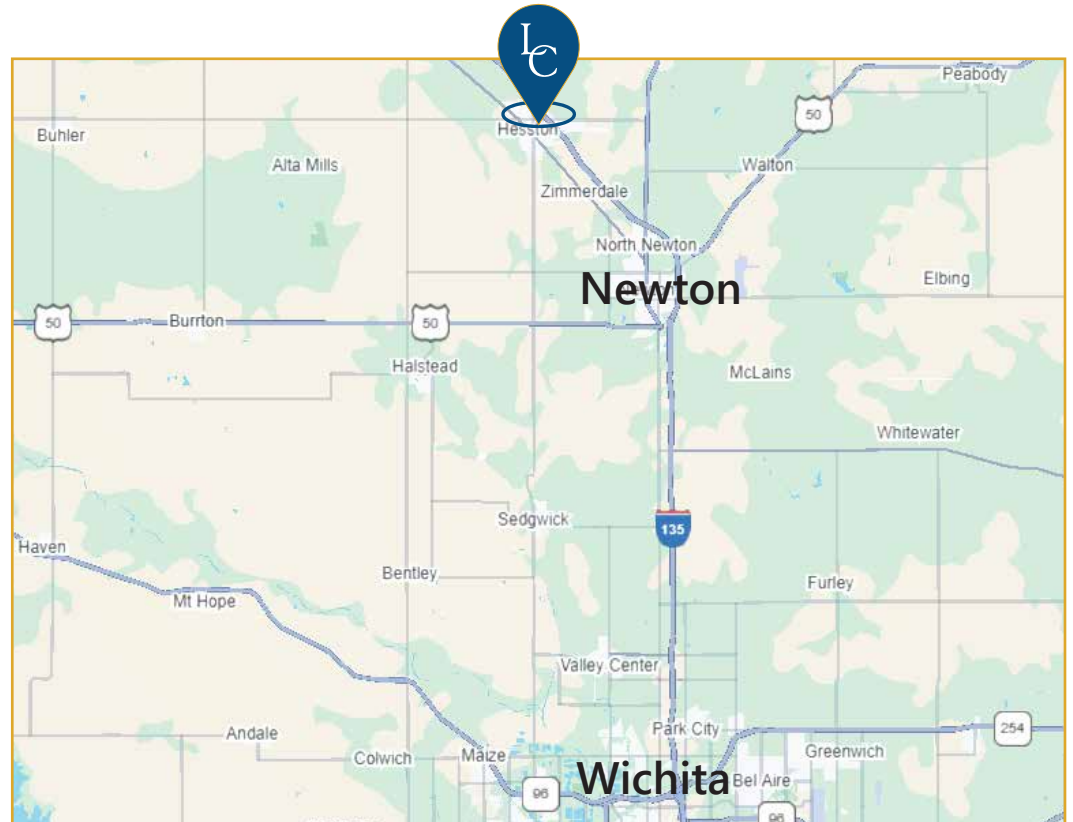
- Central heat & air
- Oven/range
- Refrigerator
- Double basin sink
- Garbage disposal
- Washer & dryer hookups
- Washer included
- Carpet, vinyl & mini blinds
- Available Cox Gigablast

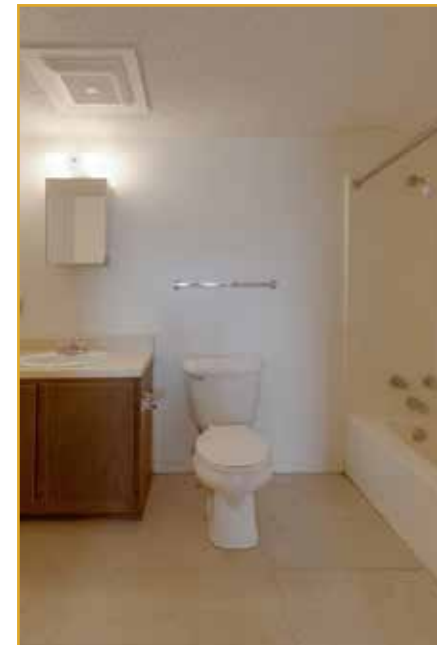
Amenities

- Community room
- Children's playground
- Basketball court
- BBQ grills
- Bike racks
- Water and Trash paid.

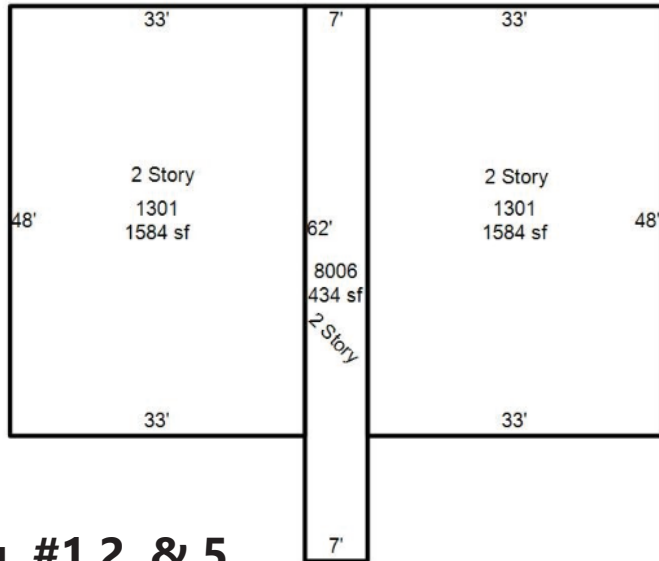
DEMOGRAPHICS

	.5 Mile	1 Mile	3 Miles
Population:	1,156	2,177	4,294
Households:	494	865	1,699
Avg. Age:	45	45	44
Median HHI:	\$65,676	\$66,681	\$71,066

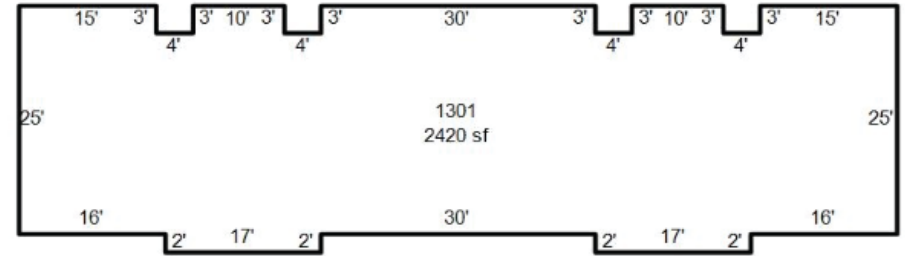




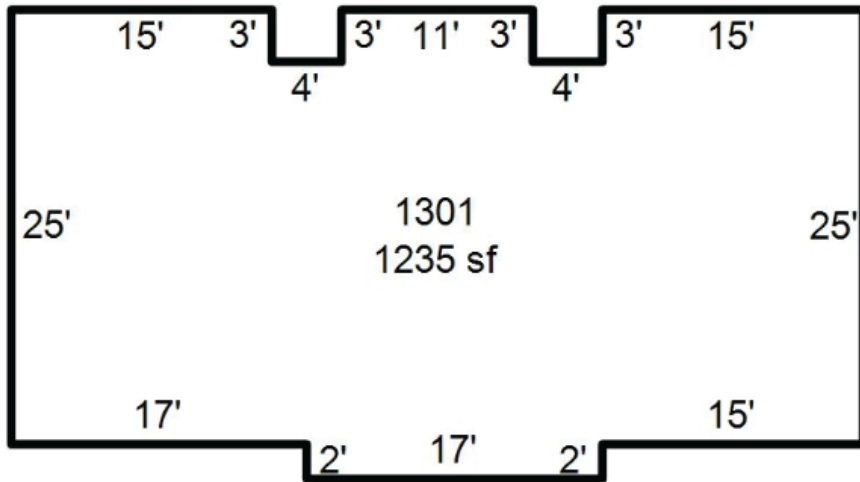
BUILDING MEASUREMENTS



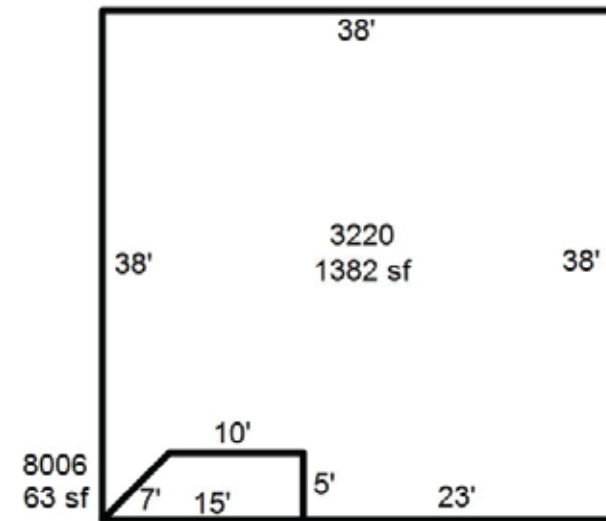
Bldg. #1, 2, & 5



Bldg. #4



Bldg. #3



Club House

AERIAL



CONTACT THE EXPERTS

Make your mark with LANDMARK



COMMERCIAL LISTING AGENT



DAVID M. LEYH, CCIM, SEC
Sr. Vice President/ Associate Broker
dleyh@ccim.net
(316) 371-8087

ABOUT OUR COMPANY

With over **38 years of experience**, Landmark Commercial Real Estate has built a reputation as the leading commercial real estate firm in Wichita, Kansas. Our team provides unmatched expertise in the sale and purchase of commercial properties. As the #1 commercial real estate team in the region, we have consistently delivered results for both buyers and sellers, offering comprehensive market knowledge, strategic insights, and a commitment to client success. Whether you're looking to buy or sell, Landmark Commercial Real Estate is your trusted partner for all commercial property needs.

DISCLAIMER

Information included herein was provided by third parties and should only be used for information purposes. Landmark Commercial Real Estate, Inc. and their respective agents, representatives, and employees, (i) make no representations or warranties of any kind, express or implied, with respect to the accuracy or completeness of any information herein, and (ii) shall have no liability whatsoever arising from any errors or discrepancies between the above listed information or actual documents.



156 N. Emporia Ave. | Wichita, Kansas 67202

 www.LandmarkRealEstate.net

 (316) 262-2442