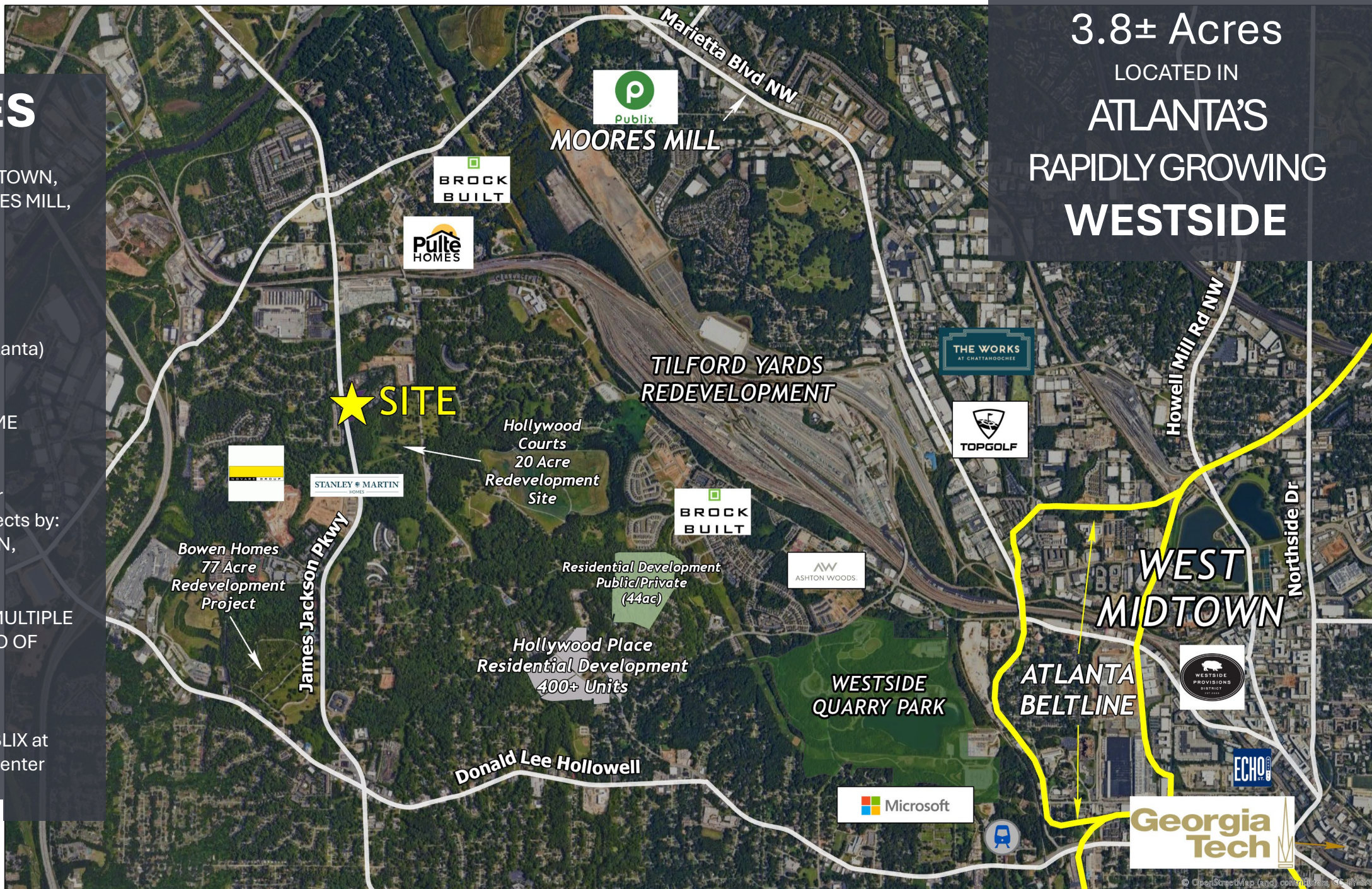


SITE

FEATURES

- › MINUTES TO WEST MIDTOWN, GEORGIA TECH, MOORES MILL, VININGS
- › MINUTES TO WESTSIDE QUARRY PARK, MARTA
- › ZONED RG-3 (City of Atlanta) FAR 0.696
- › ZONED FOR TOWNHOME DEVELOPMENT
- › 0.5 mi ± RADIUS to other successful market projects by: PULTE, STANLEY MARTIN, NOVARE, BROCK BUILT
- › CLOSE PROXIMITY TO MULTIPLE PARKS AND PHASE TWO OF THE PROCTOR CREEK GREENWAY TRAIL
- › 5 MINUTE DRIVE to PUBLIX at Moores Mill Shopping Center



3.8± Acres

LOCATED IN

ATLANTA'S
RAPIDLY GROWING
WESTSIDE



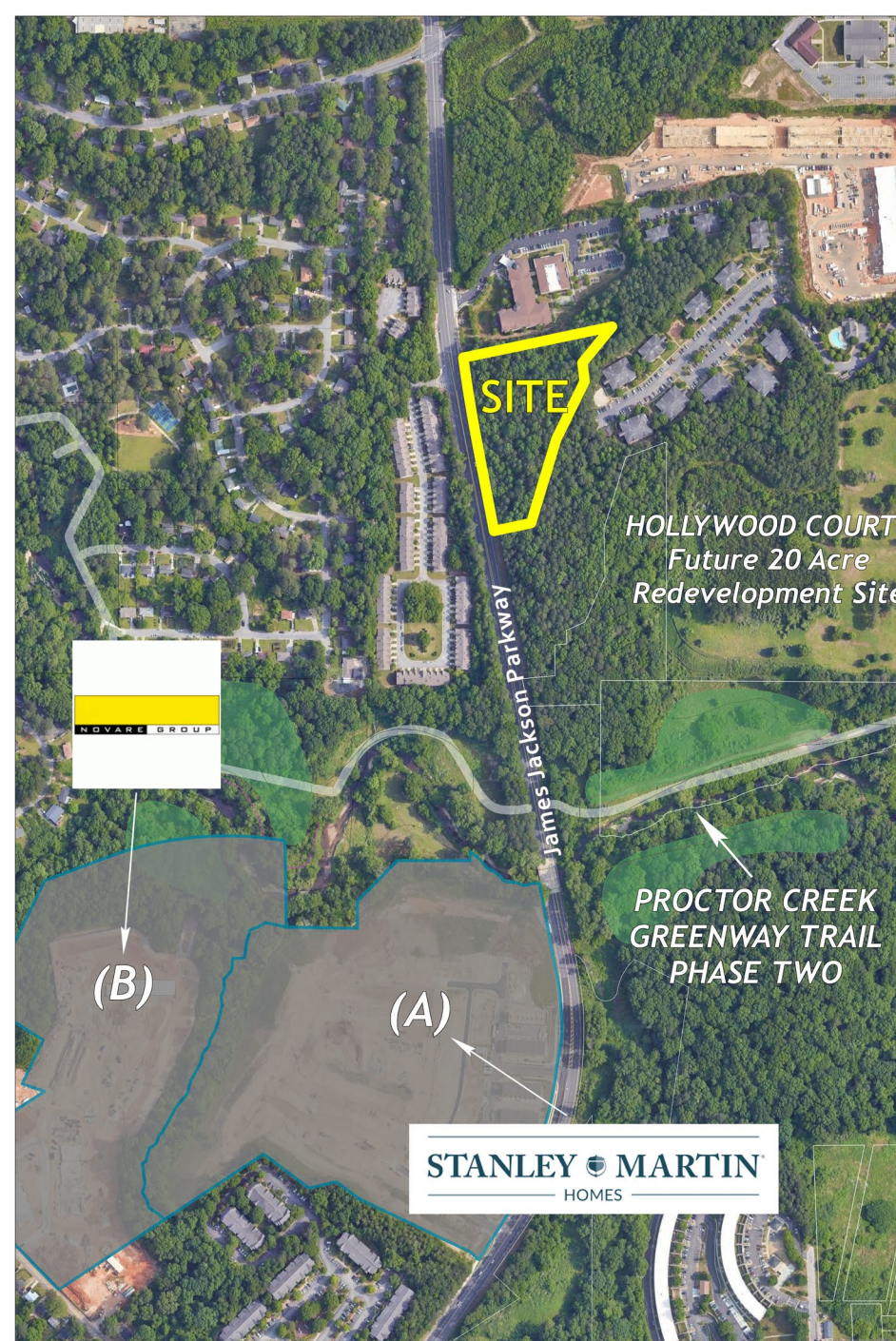
RASMUSSEN
REALTY

1625

JAMES JACKSON

RECENT DEVELOPMENT ACTIVITY

- A. WESTSIDE BEND by STANLEY MARTIN HOMES | 200+ TOWNHOMES | mid-\$400s (170+ sold)
- B. POPULUS WESTSIDE by NOVARE | 280+ MARKET MULTIFAMILY UNITS
- C. 1871 HOLLYWOOD by PULTE HOMES | 50+ TOWNHOMES | mid-\$500s (20+ sold | 2024 delivered)
- D. RIVERLINE by BROCK BUILT 52 TOWNHOMES – Sold Out mid-\$500s
- E. THE COLLECTIVE by TELLUS PARTNERS | 190 MARKET MULTIFAMILY UNITS | Delivered Q12024



BROKER CONTACT



RASMUSSEN
REALTY

Christopher Rasmussen
PRINCIPAL BROKER

RASMUSSEN REALTY LLC

1320 Ellsworth Industrial Blvd NW | Suite A1500

Atlanta, GA 30318

Brokerage Firm License #: H-77610

Chris Rasmussen

803.431.1190 cell | chris@rg-pg.com

Broker, License #: 363085

Disclosures: Broker hereby discloses that it is affiliated with the Seller. Information in this package was obtained from sources believed to be reliable. Rasmussen Realty, the Seller, and their respective agents and business affiliates may not have verified its accuracy and makes no guarantee, warranty or representation about it. This package is submitted to recipients and any digital real estate listing services, subject to the possibility of errors, omissions, change of price or other conditions, prior sale, lease or financing, or withdrawal without prior notice.