



Property Information

Location:	1801 W Loop 281 Longview, Texas 75604 On the corner of W Loop 281 and Gilmer Road
Building Size:	Approximately 8,132 square feet
Asking Rent:	\$35.00/SF/YR + NNN
Zoning:	General Retail
Amenities:	Modernly updated medical facility on just under an acre with numerous exam rooms, large central nurses' station, beautiful floors, welcoming waiting room with snack service and a fenced outside space for staff located behind the building.

For more information:

Walter R. Northcutt

(903) 753-2191

wnorthcutt@beerwellseasttexas.com

PROPERTY PHOTOS





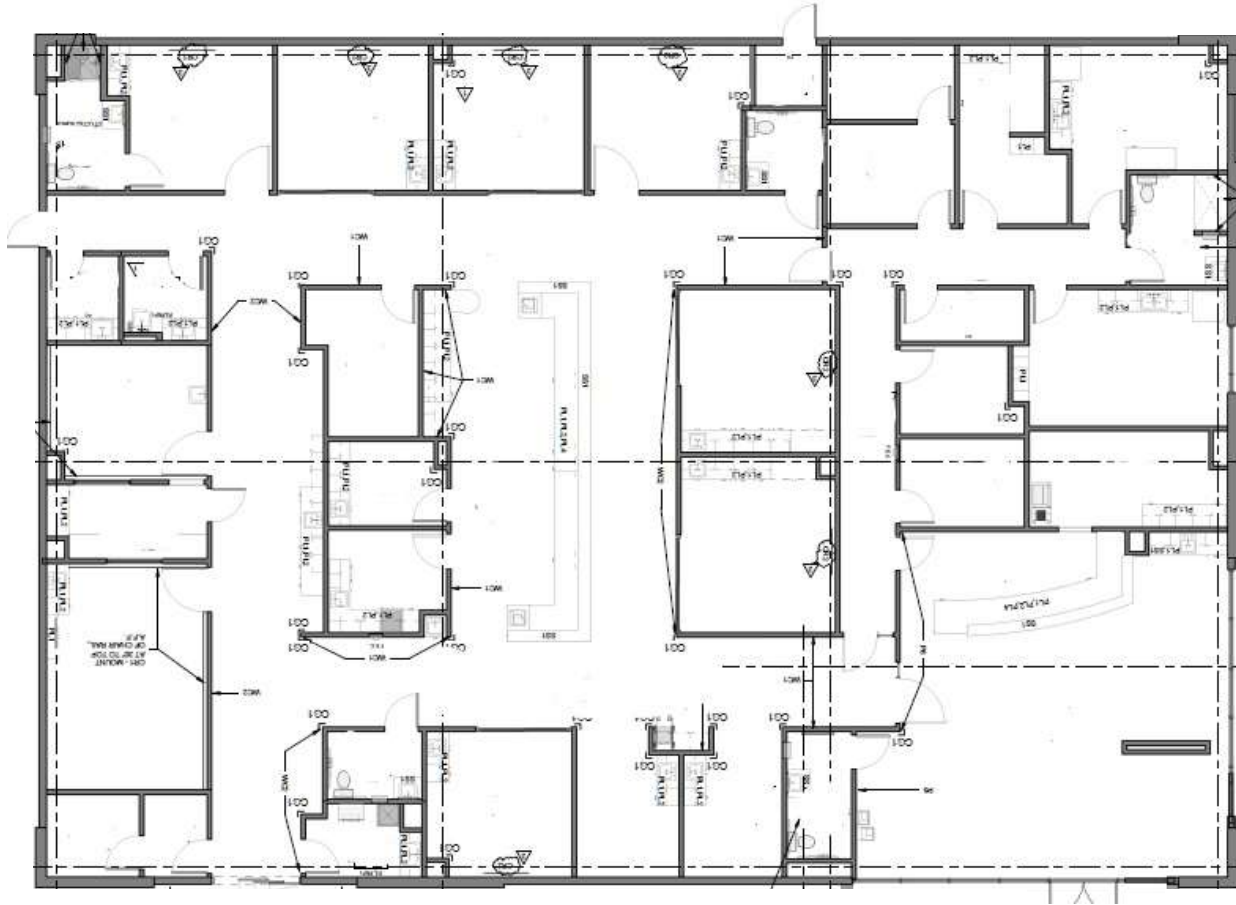
This information has been secured from sources we believe to be reliable, but we make no representations or warranties, expressed or implied, as to the accuracy of the information. References to square footage or property boundary lines are approximate. Buyer must verify the information and bears all risk for any inaccuracies.





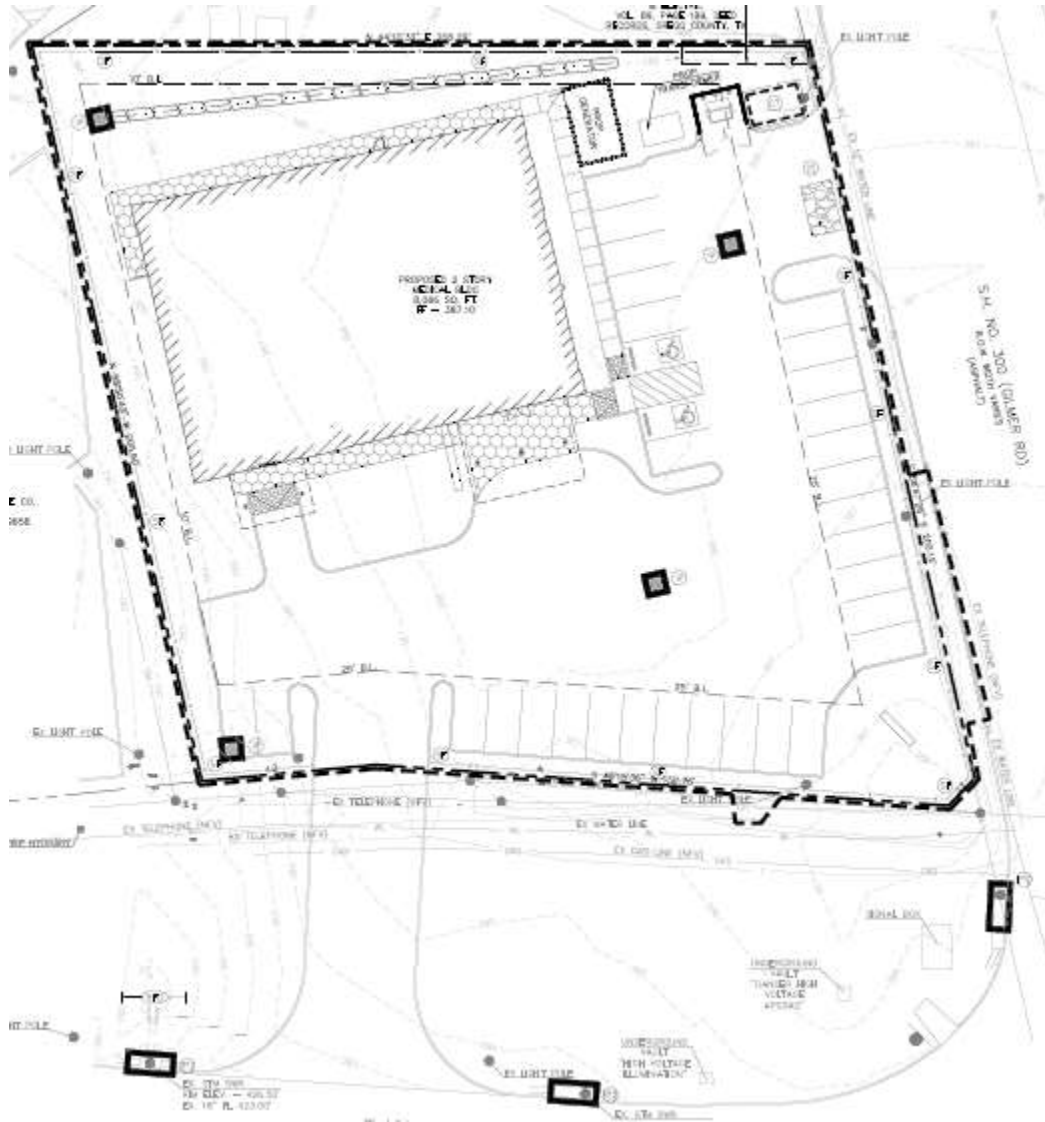
FLOOR PLAN

(Actual Layout May Vary)



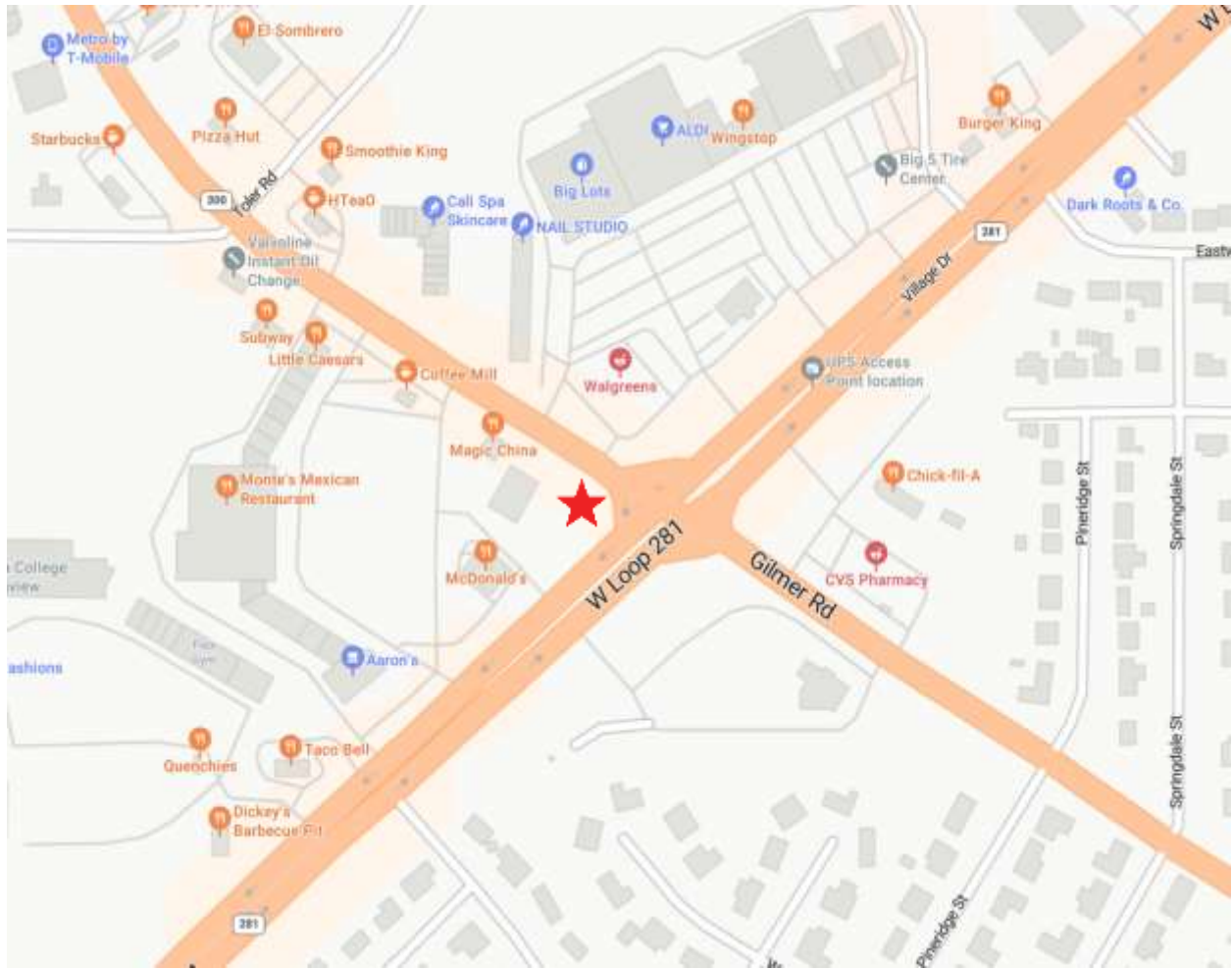
This information has been secured from sources we believe to be reliable, but we make no representations or warranties, expressed or implied, as to the accuracy of the information. References to square footage or property boundary lines are approximate. Buyer must verify the information and bears all risk for any inaccuracies.

SITE PLAN

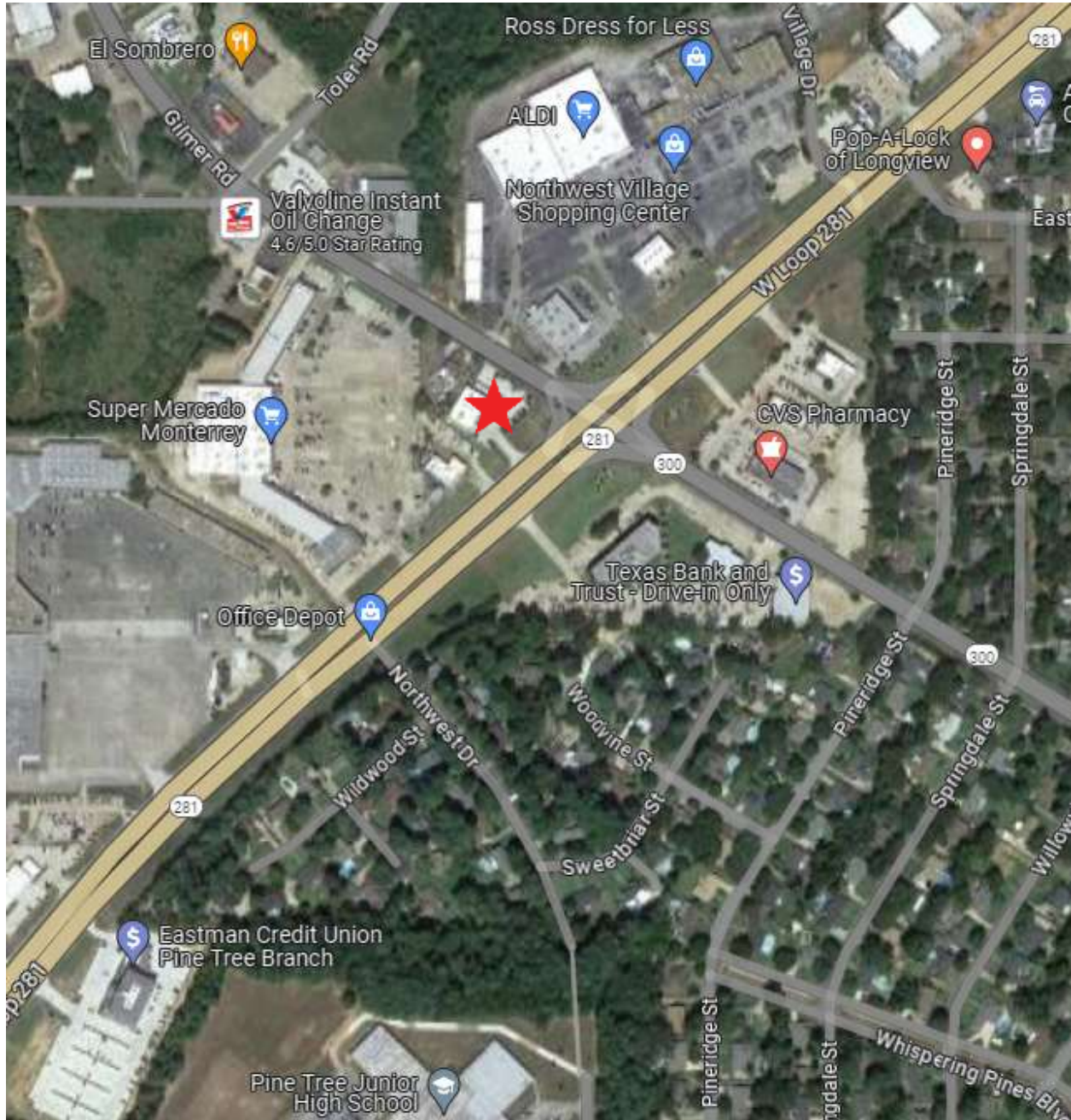


This information has been secured from sources we believe to be reliable, but we make no representations or warranties, expressed or implied, as to the accuracy of the information. References to square footage or property boundary lines are approximate. Buyer must verify the information and bears all risk for any inaccuracies.

MAP



AERIAL



TRAFFIC COUNTS

