

SOUTHPOINT OFFICE CENTER SUITE 1501
6817 SOUTHPOINT PRKY, JACKSONVILLE, FL 32216

**OFFICE
FOR LEASE**



Suite 1501

1180 Square Feet

\$20.60/sf/yr Modified Gross

Suite 1501 is centrally located in Southpoint Office Center with close proximity to St. Johns Town Center, St. Vincent's Hospital, I-95, I-295, US-1, and Jay Turner Butler Blvd. The property is approved for both office and medical users. This suite features 4 private offices, reception/lobby, a break-room equipped with a kitchenette, and an ADA compliant bathroom.

- **Efficient floor plan**
- **Excellent location offering easy access to I-295, I-95, and Jay Turner Butler Blvd.**
- **Modified Gross Lease, no CAM**
- **Restaurants and shopping nearby**
- **Short Lease term available for sublease.**

Eric Akers, Broker

Phone: (904)535-8465

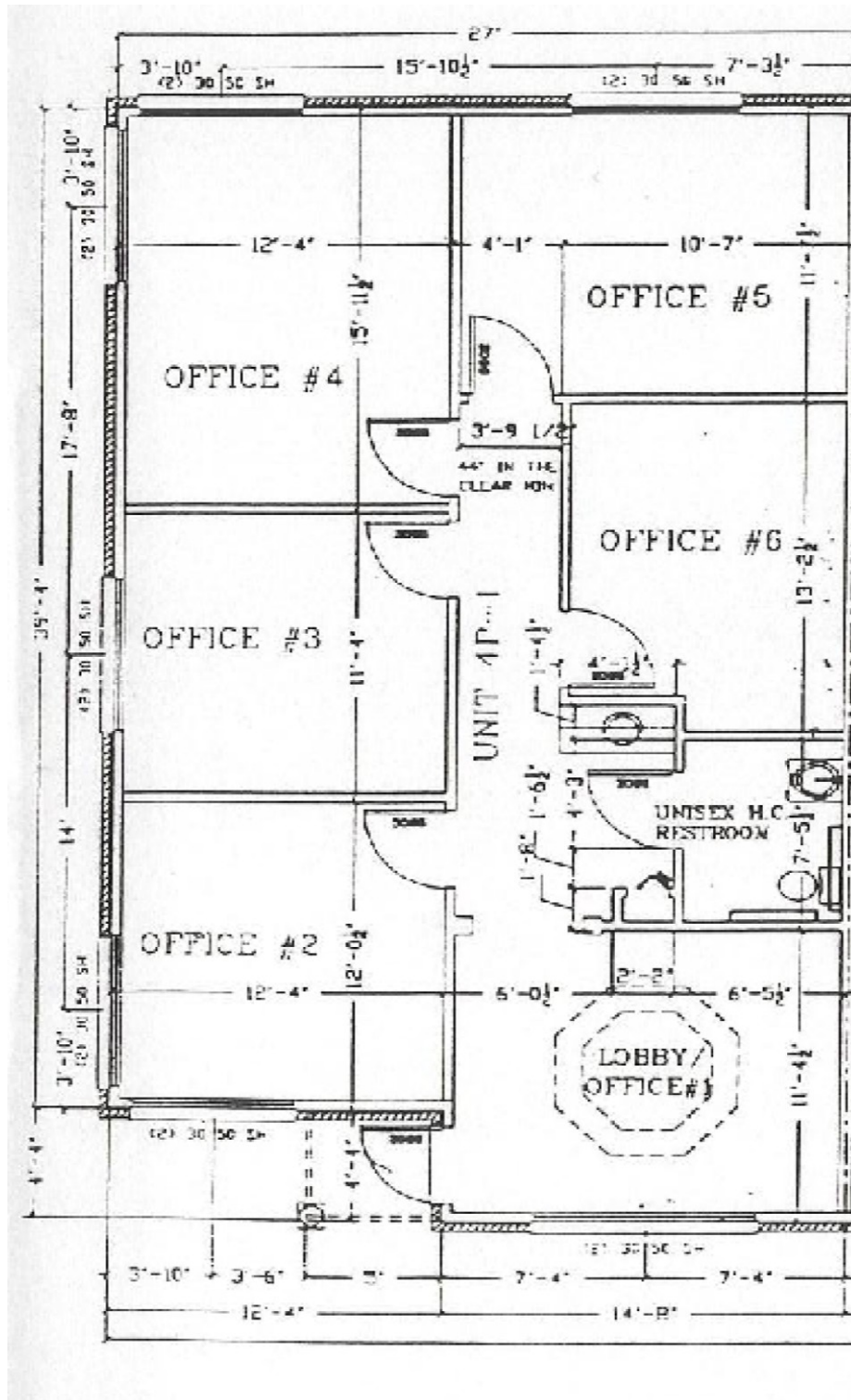
william.e.akers@gmail.com



The information contained herein was obtained from reliable sources and is believed to be accurate. All information presented should be verified. All or part of the property may be withdrawn from the market at any time without notice.

SOUTHPOINT OFFICE CENTER SUITE 1501
6817 SOUTHPOINT PRKY, JACKSONVILLE, FL 32216

FLOOR PLAN



Eric Akers, Broker

Phone: (904)535-8465

william.e.akers@gmail.com

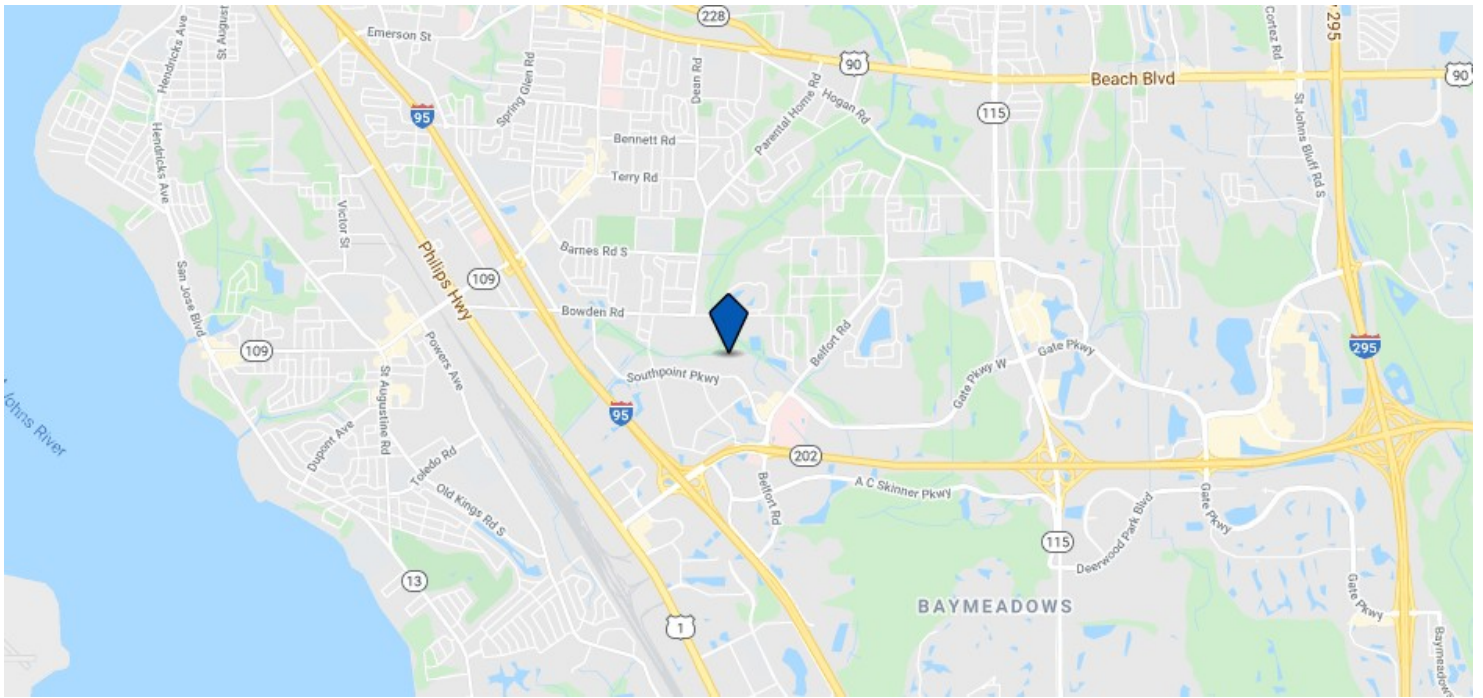


The information contained herein was obtained from reliable sources and is believed to be accurate. All information presented should be verified. All or part of the property may be withdrawn from the market at any time without notice.

SOUTHPOINT OFFICE CENTER SUITE 1501

6817 SOUTHPOINT PRKY, JACKSONVILLE, FL 32216

PHOTOS & LOCATION MAP



Eric Akers, Broker

Phone: (904)535-8465

william.e.akers@gmail.com



The information contained herein was obtained from reliable sources and is believed to be accurate. All information presented should be verified. All or part of the property may be withdrawn from the market at any time without notice.