

**103  
JONESBORO  
ROAD**  
MCDONOUGH,  
GA 30253

**Office Space For Lease**

**RYAN CLARK**

*Vice President*

404.942.2037

[rclark@kingindustrial.com](mailto:rclark@kingindustrial.com)

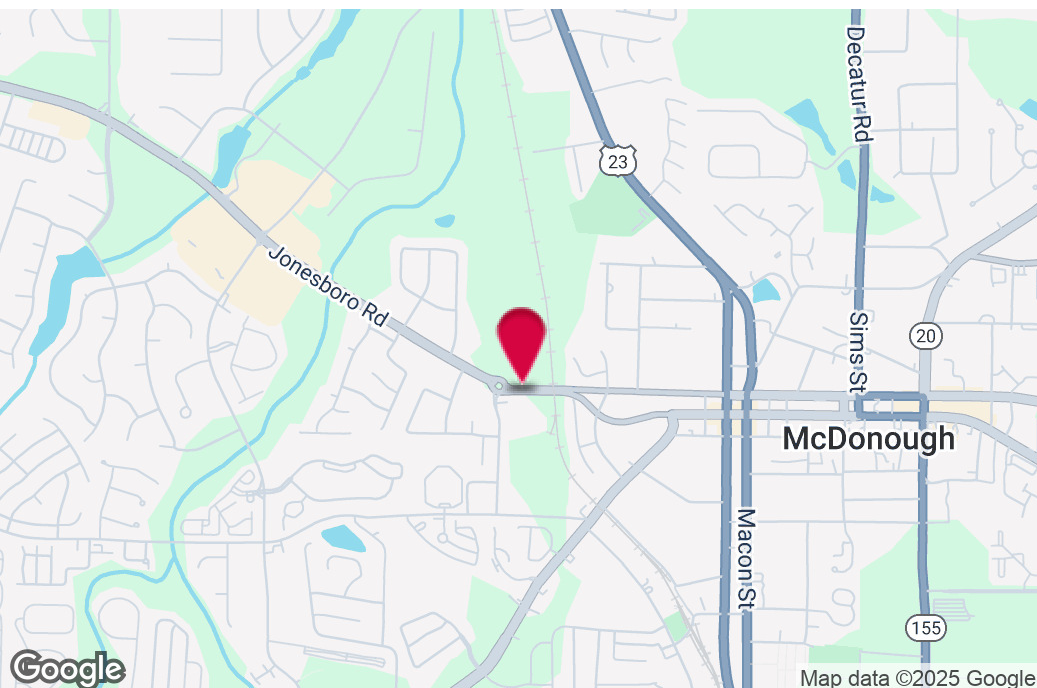
**King** *Industrial  
Realty, Inc.*

Industrial • Commercial • Investment

404.942.2000 | [kingindustrial.com](http://kingindustrial.com)



FOR LEASE  
OFFICE SPACE



### PROPERTY HIGHLIGHTS

- **Suite A1 & A2:** 3,000+/- SF Office Space
- Prime Location
- Maximum Tenant Exposure
- 22,700+/- Cars Per Day
- Zoned Highway Commercial

### OFFERING SUMMARY

Available SF:	3,000 SF
Building Size:	12,000 SF
Zoning:	C3

#### RYAN CLARK

Vice President

404.942.2037

rclark@kingindustrial.com

*Every effort has been made to provide accurate information, but no liability is assumed for errors or omissions.*



Industrial • Commercial • Investment  
404.942.2000 | kingindustrial.com



SUITE A1 & A2  
3,000± SF



**RYAN CLARK**

Vice President

404.942.2037

rclark@kingindustrial.com

*Every effort has been made to provide accurate information, but no liability is assumed for errors or omissions.*

**king** Industrial  
Realty, Inc. **CORFAC**  
INTERNATIONAL

Industrial • Commercial • Investment  
404.942.2000 | kingindustrial.com



SUITE C  
320± SF



**RYAN CLARK**

Vice President

404.942.2037

rclark@kingindustrial.com

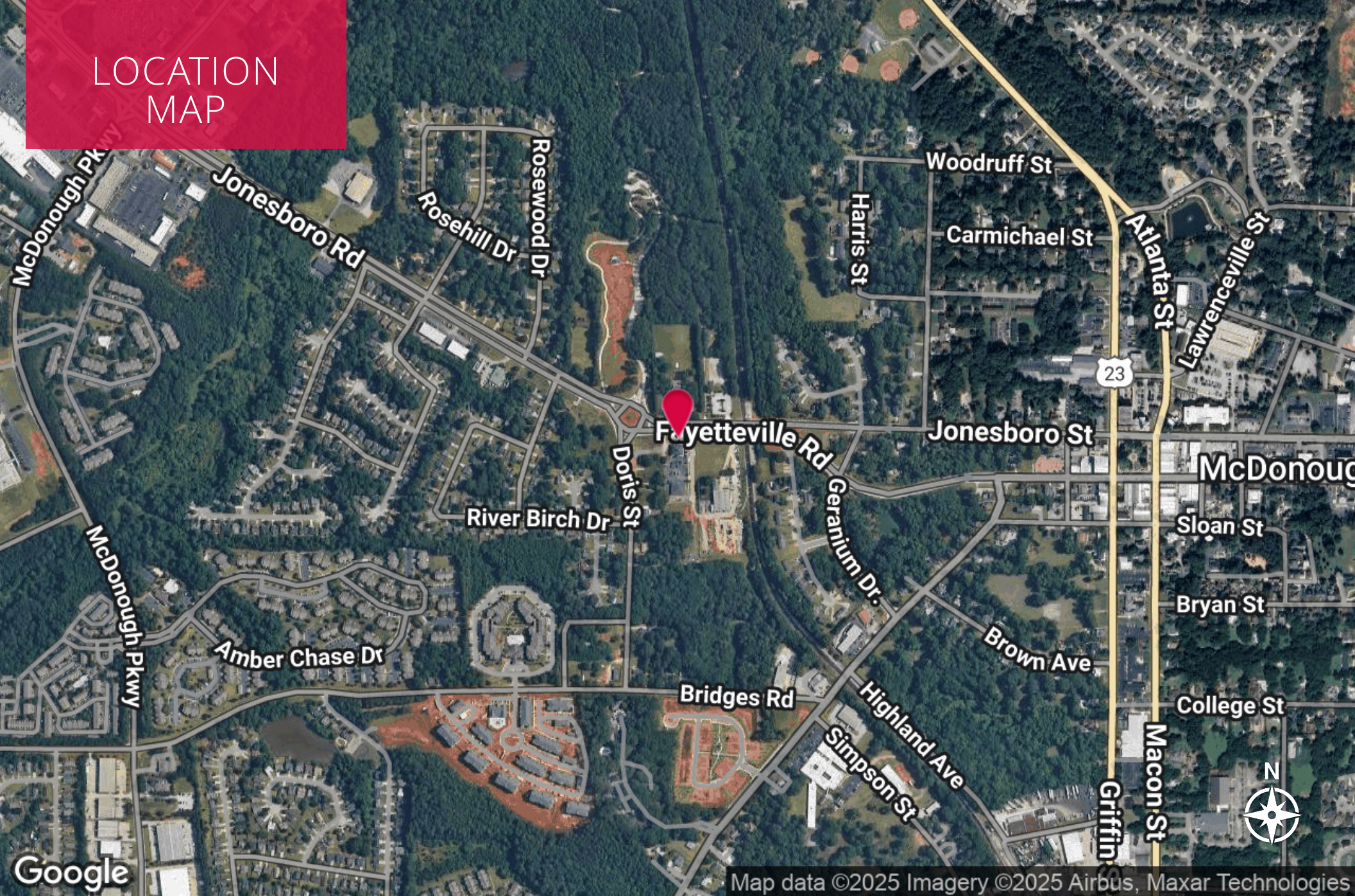
*Every effort has been made to provide accurate information, but no liability is assumed for errors or omissions.*

**king** Industrial  
Realty, Inc. **CORFAC**  
INTERNATIONAL

Industrial • Commercial • Investment  
404.942.2000 | kingindustrial.com



# LOCATION MAP



**RYAN CLARK**

Vice President

404.942.2037

rclark@kingindustrial.com

*Every effort has been made to provide accurate information, but no liability is assumed for errors or omissions.*

**king** Industrial  
Realty, Inc.

**CORFAC**  
INTERNATIONAL

Industrial • Commercial • Investment  
404.942.2000 | kingindustrial.com





EXCLUSIVELY LISTED BY:

**RYAN CLARK**

*Vice President*

[rclark@kingindustrial.com](mailto:rclark@kingindustrial.com)

404.942.2037

**King** Industrial  
Realty, Inc.

Industrial • Commercial • Investment  
404.942.2000 | [kingindustrial.com](http://kingindustrial.com)