

FOR LEASE

PRIME MEDICAL/OFFICE SPACE



210 S. Palisade Drive, Ste. 203-A | Santa Maria, CA

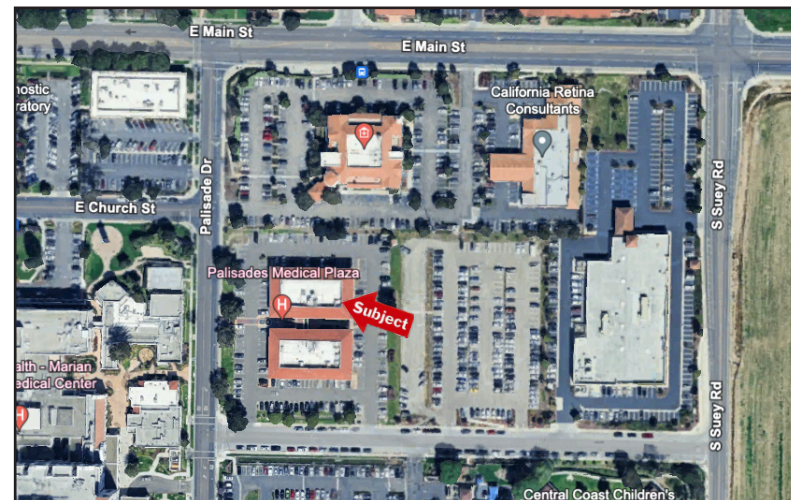
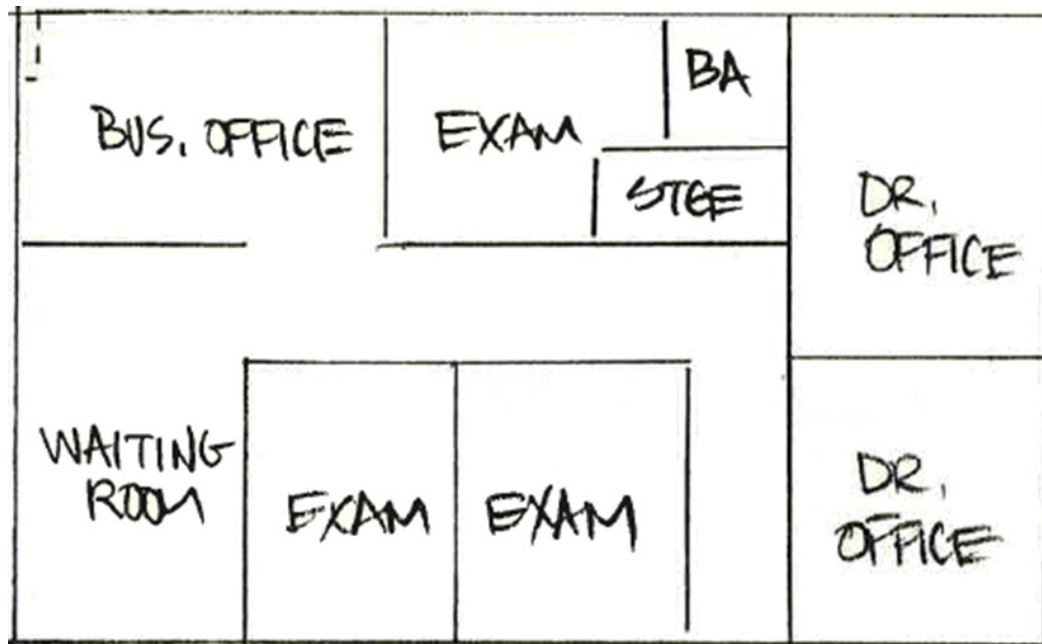
Brian LaCabe
805.928.2800 ext. 103
BLaCabe@PacificaCRE.com
Lic #01026699



PO Box 250 | Santa Maria, CA 93456 | PacificaCommercialRealty.com

Information contained herein has been obtained from the owner of the property or from other sources deemed reliable. We have no reason to doubt its accuracy, but we do not guarantee it.

FOR LEASE 210 S. PALISADE DRIVE, STE. 203-A | SANTA MARIA, CA



Lease Information

- Rental Rate: \$3.20/SF/FSG
- Term: 3-5 Years

Property Information

- Size: +/-1,215 Sq. Ft.
- Location: 2nd Floor
- Elevator Served: Yes
- Restroom: Common
- Parking: Private Lot and Street
- Zoning: PD/CPO (Professional Office)

Prime medical office space in "Palisades Medical Plaza" on S. Palisade Drive. Located in the Santa Maria's medical hub and across from "Marian Regional Medical Center", this space is ideal for a variety of medical uses. Included in the space are 3 exam rooms with sinks, 2 physician offices, reception area and business office (see Space Plan). Rental rate includes all your utilities except telephone and internet. Clean, bright and ready for your practice. Call listing agent for additional information.



PO Box 250 | Santa Maria, CA 93456 | PacificaCommercialRealty.com

Information contained herein has been obtained from the owner of the property or from other sources deemed reliable. We have no reason to doubt its accuracy, but we do not guarantee it.

FOR LEASE 210 S. PALISADE DRIVE, STE. 203-A | SANTA MARIA, CA



PO Box 250 | Santa Maria, CA 93456 | PacificaCommercialRealty.com

Information contained herein has been obtained from the owner of the property or from other sources deemed reliable. We have no reason to doubt its accuracy, but we do not guarantee it.