



Woodfield Lake Office Court II

939 N Plum Grove Rd, Schaumburg, IL 60173

Naimesh Shah

Real Estate Company

939 N Plum Grove Rd, Schaumburg, IL 60173

shahnaimesh@yahoo.com

(847) 721-2974



Woodfield Lake Office Court II

\$19.00 /SF/YR

Recently renovated. Neutral colors. Bright LED light through out. Large Windows. Natural light as well. Close to highways. Small private kitchen. Multiple Private Offices, Reception Area and Open Area can fit 1 to 10 people....

- Recently renovated. New floors, LED lights, neutral paint, private offices, small private kitchen.



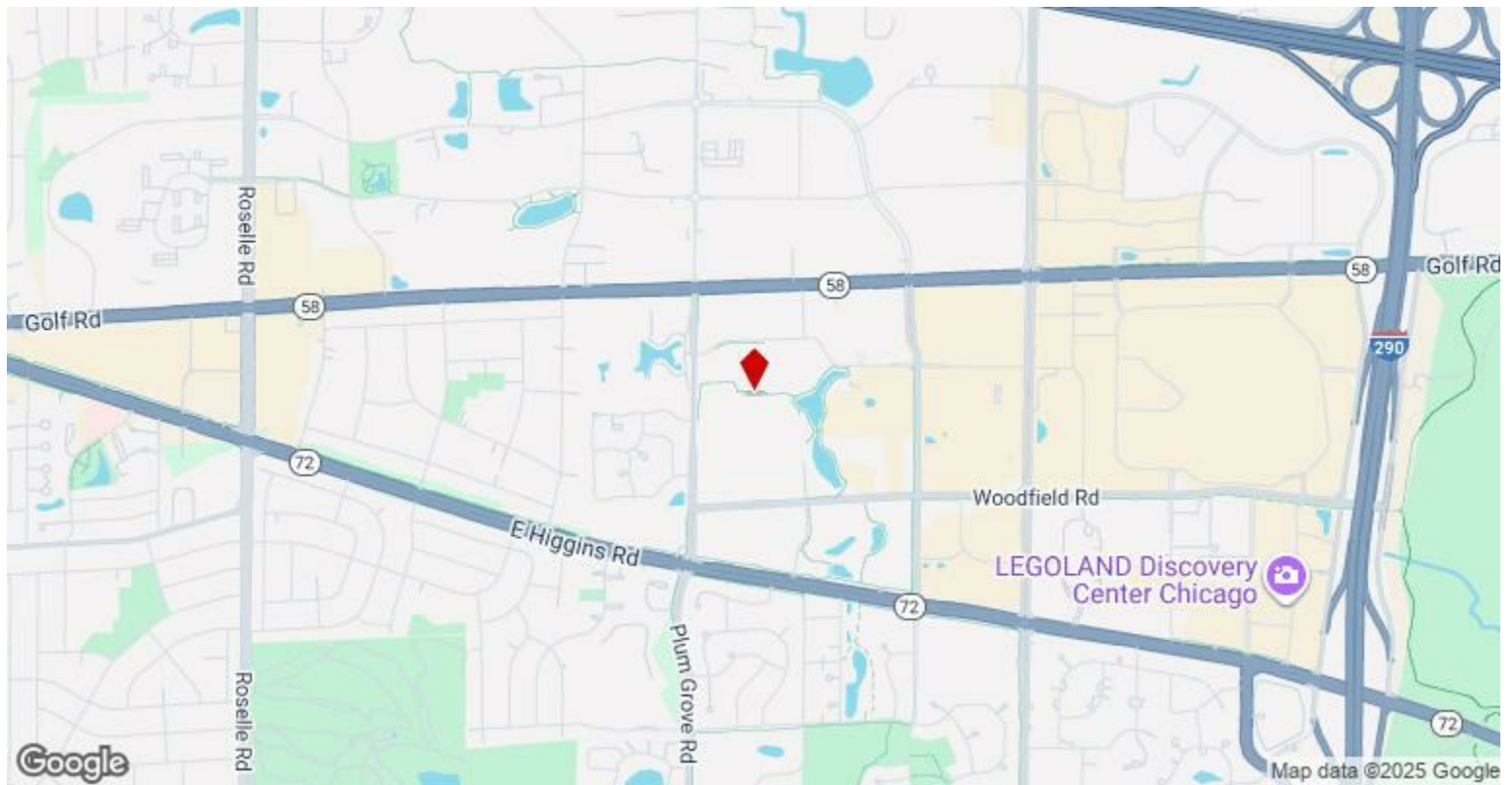
Rental Rate:	\$19.00 /SF/YR
Property Type:	Office
Property Subtype:	Medical
Building Class:	C
Rentable Building Area:	5,500 SF
Year Built:	1982
Walk Score ®:	36 (Car-Dependent)
Rental Rate Mo:	\$1.58 /SF/MO

1

1st Floor Ste H

Space Available	1,085 SF
Rental Rate	\$19.00 /SF/YR
Date Available	Now
Service Type	Modified Gross
Built Out As	Professional Services
Space Type	Relet
Space Use	Office
Lease Term	Negotiable

Nice vinyl flooring, neutral colors. Bright LED light through out. Private offices which can be partitioned. Large Windows with Natural light. Close to highways. Very quiet. Desirable location. Surrounded by business community. Safe.



939 N Plum Grove Rd, Schaumburg, IL 60173

Recently renovated. Neutral colors. Bright LED light through out. Large Windows. Natural light as well. Close to highways. Small private kitchen. Multiple Private Offices, Reception Area and Open Area can fit 1 to 10 people.

Property Photos



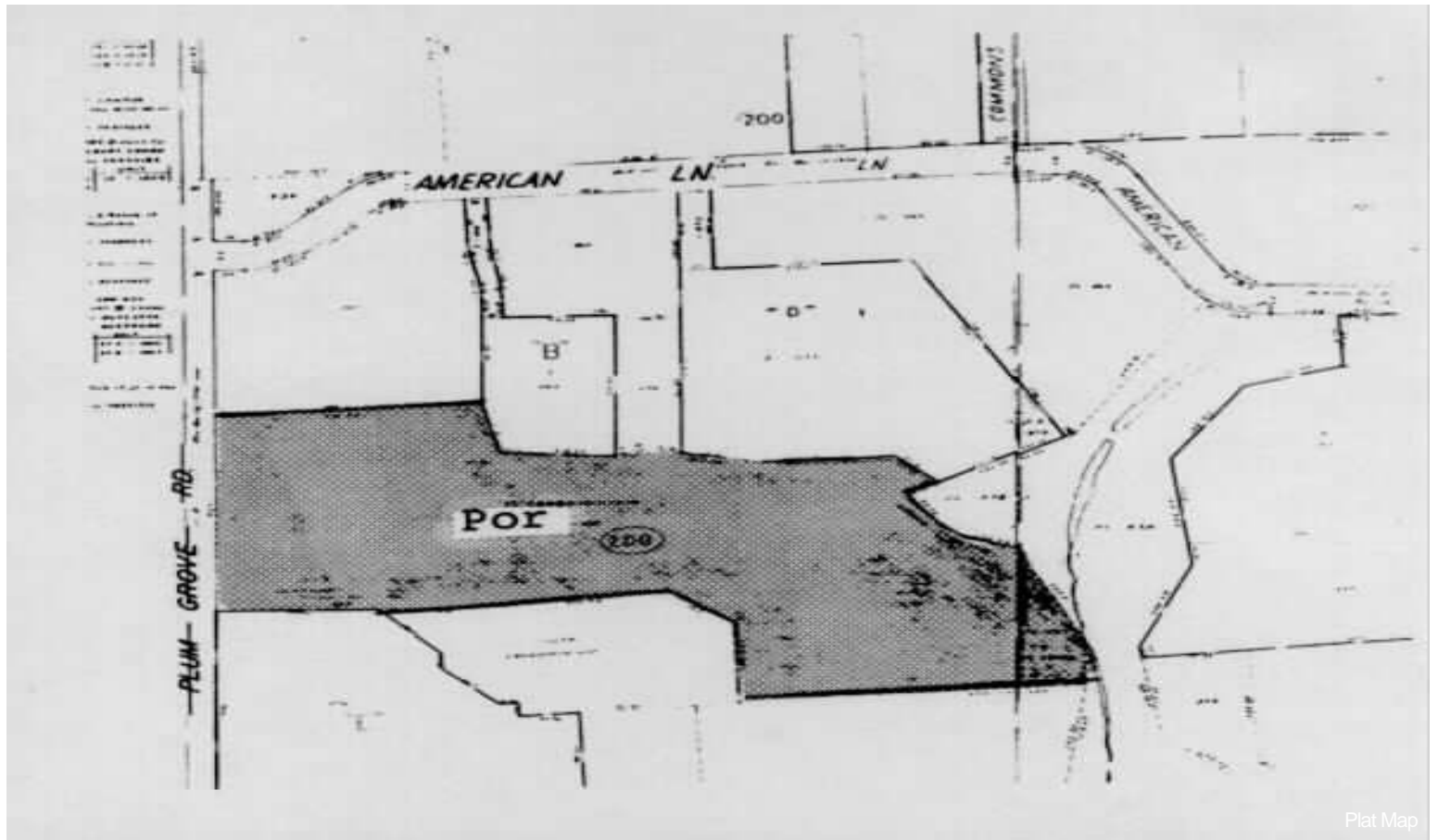
Property Photos



Property Photos



Building Photo



Plat Map

Property Photos



Building Photo



Building Photo

Property Photos

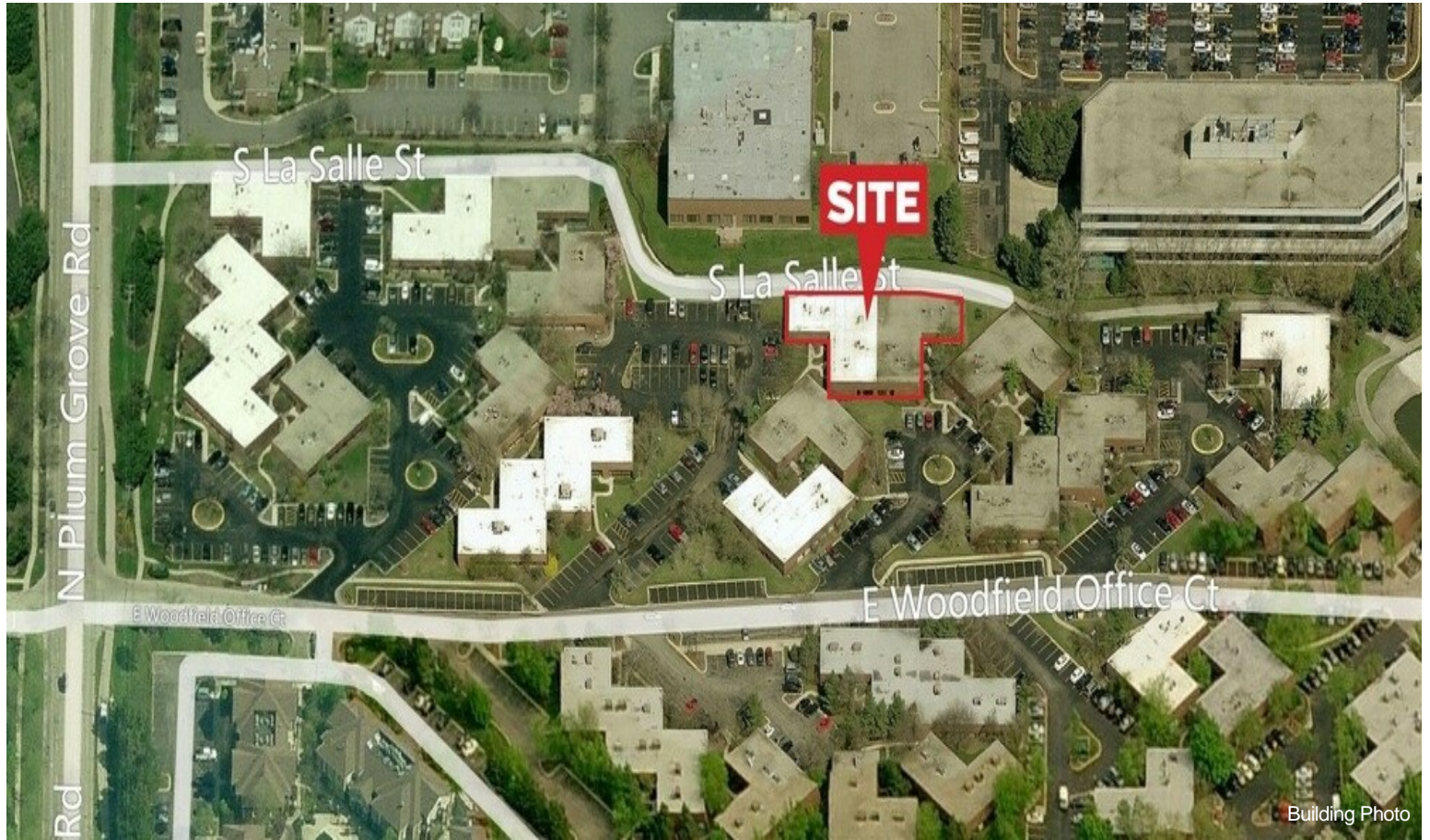


EXHIBIT A
939 N Plum Grove Road
Suite H
Schaumburg IL 60173

