

The Colliers logo is a blue rectangle with rounded corners, containing the word "Colliers" in white serif font. Below the text are three horizontal stripes: yellow, red, and blue.

# 2200 Riverside Drive

Green Bay, WI 54301

For Sublease  
\$8.00 - \$10.00/SF NNN

Contact Us!

**Colliers | Wisconsin**  
4321 W College Ave, Suite 260  
Appleton, WI 54914  
P: +1 920 739 5300

**Mark Pucci**  
Senior Vice President  
+1 920 410 5094 (mobile)  
mark.pucci@colliers.com



**Parking**  
158 Spaces (4.6/1,000)



**Availability**  
+/- 34,607 SF



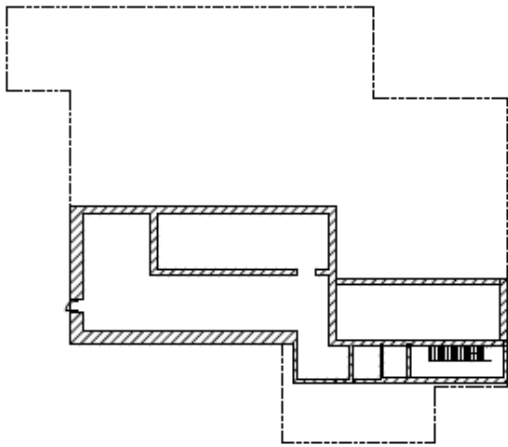
Austin Straubel International  
Airport is 10 minutes away



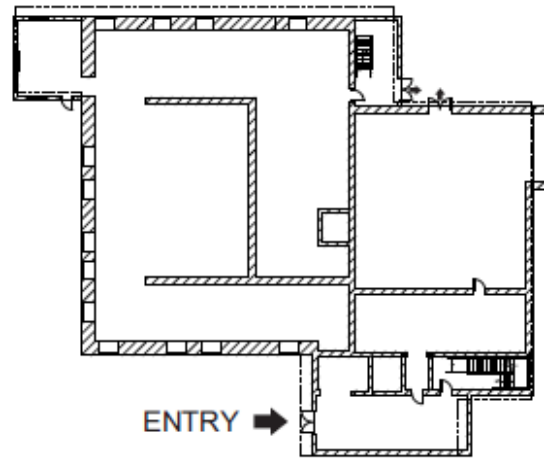
**Year Built**  
1858 - Converted in 1984

# Building Layout

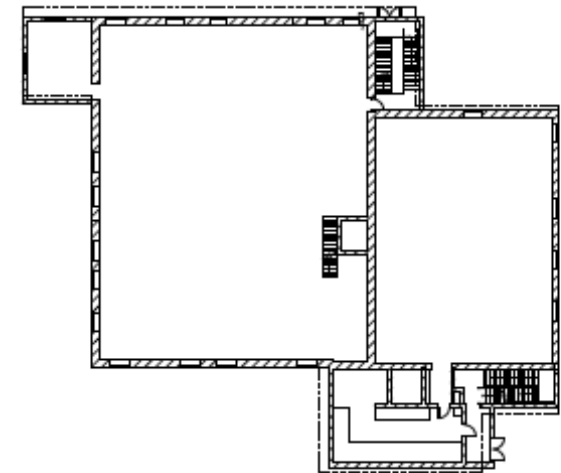
34,607 SF of Contiguous Space Available!



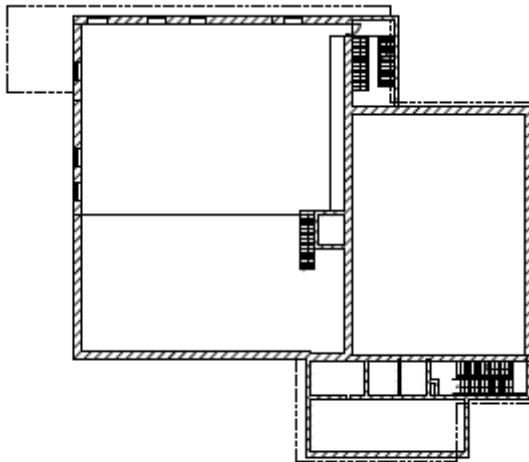
**L** Lower Level  
Basement



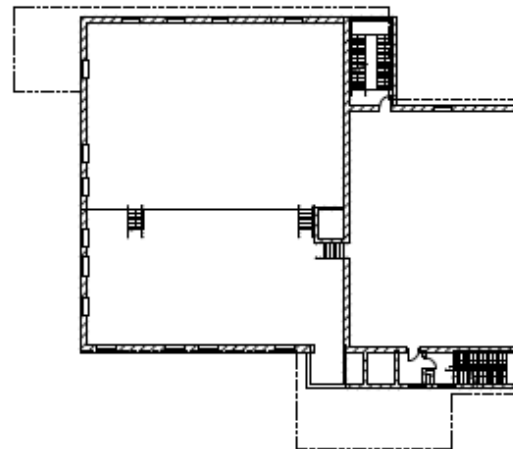
**1** First Floor  
9,711 SF



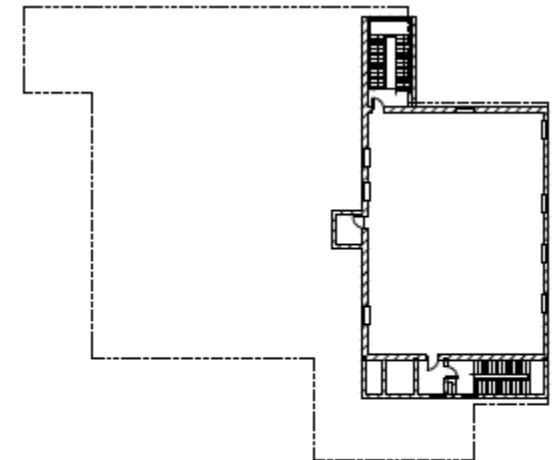
**2** Second Floor  
9,697 SF



**2B** Second Floor Mezzanine  
3,349 SF



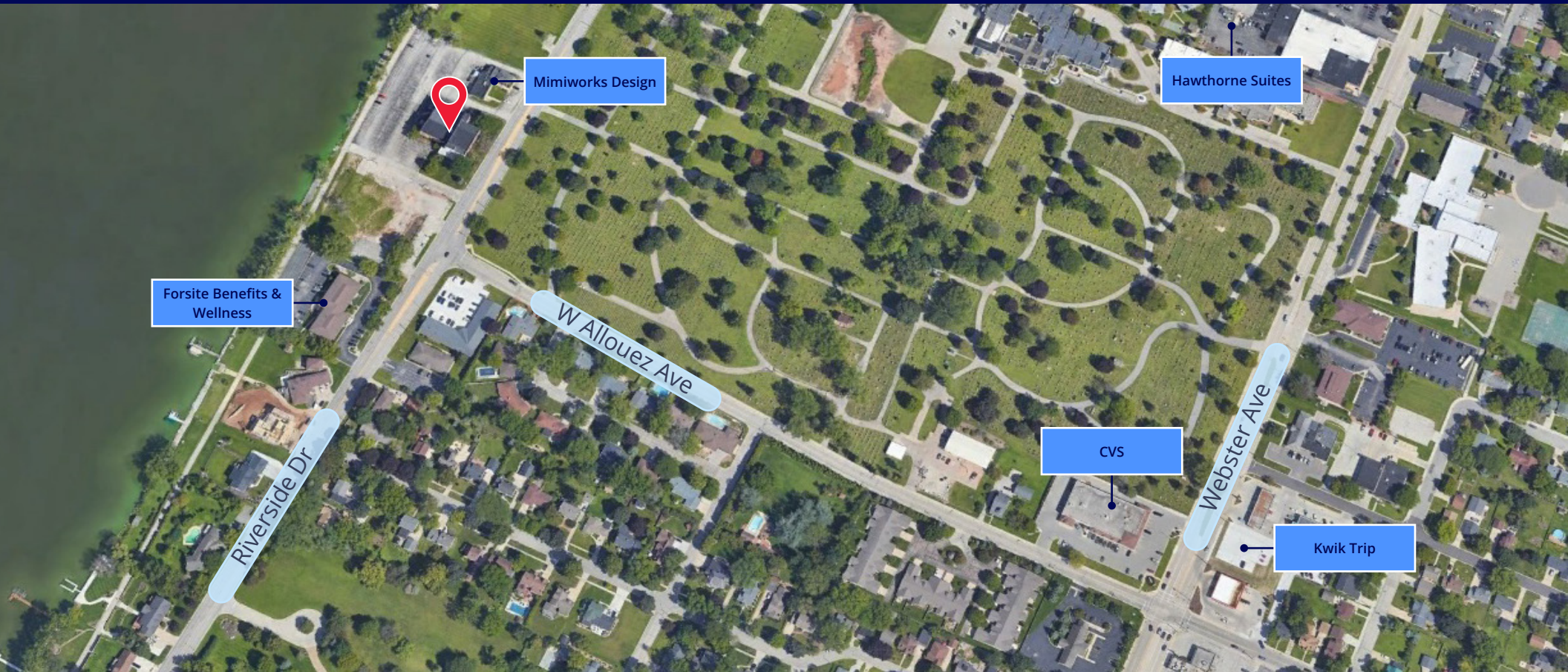
**3** Third Floor  
8,607 SF





**4** Fourth Floor  
3,243 SF



# Area Overview



## Demographic Summary

	1 Mile	5 Miles	10 Miles	
	2023 Population	6,120	169,407	244,420
	2023 Daytime Population	12,509	207,116	267,174
	2023 Median Household Income	\$72,922	\$58,395	\$65,781
	2023 Households	2,289	74,345	104,112

## Building Highlights

This office space offers great signage, storage space, and access to a bus line for convenience. It also includes a conferencing facility for meetings, 24-hour availability for flexibility, and is located in a historic building with easy access to the highway system.

[Learn more about Green Bay!](#)



# Building Photos



### Drive Times

 **Appleton**  
32 Minutes, 30.2 Miles

 **De Pere**  
9 Minutes, 4.2 Miles



## Contact Us

**Colliers | Wisconsin**  
4321 W College Ave, Suite 260  
Appleton, WI 54914  
P: +1 920 739 5300

**Mark Pucci**  
Senior Vice President  
+1 920 410 5094 (mobile)  
mark.pucci@colliers.com





# State of Wisconsin | Broker Disclosure

## Non-Residential Customers

Wisconsin law requires all real estate licensees to give the following information about brokerage services to prospective customers.

Prior to negotiating on your behalf the Brokerage firm, or an agent associated with the firm, must provide you the following disclosure statement:

### **Broker Disclosure to Customers**

You are a customer of the broker. The broker is either an agent of another party in the transaction or a subagent of another broker who is the agent of another party in the transaction. The broker, or a salesperson acting on behalf of the broker, may provide brokerage services to you, the broker owes you, the customer, the following duties:

- The duty to provide brokerage services to you fairly and honestly.
- The duty to exercise reasonable skill and care in providing brokerage services to you.
- The duty to provide you with accurate information about market conditions with a reasonable time if you request it, unless prohibited by law.
- The duty to protect your confidentiality. Unless the law requires it, the broker will not disclose your confidential information or the confidential information to other parties.
- The duty to safeguard trust funds and other property the broker holds.
- The duty, when negotiating, to present contract proposals in an objective and unbiased manner and disclose the advantages and disadvantages of the proposals.

Please review this information carefully. A broker or salesperson can answer your questions about brokerage services, but if you need legal advice, tax advice or a professional home inspection contact an attorney, tax advisor, or home inspector. This disclosure is required by section 452.135 of the Wisconsin statutes and is for information only. It is a plain-language summary of a broker's duties to a customer under section 452.133 (1) of the Wisconsin statutes.

### **Confidentiality Notice to Customers**

Broker will keep confidential any information given to broker in confidence, or any information obtained by broker that he or she knows a reasonable person would want to be kept confidential. Unless the information must be disclosed by law or you authorize the broker to disclose particular information. A broker shall continue to keep the information confidential after broker is no longer providing brokerage services to you. The following information is required to be disclosed by law:

1. Material adverse facts, as defined in section 452.01 (5g) of the Wisconsin Statutes.
2. Any facts known by the broker that contradict any information included in a written inspection report on the property or real estate that is the subject of the transaction.

To ensure that the broker is aware of what specific information you consider confidential, you may list that information below. At a later time, you may also provide the broker with other information you consider to be confidential.

Confidential information: \_\_\_\_\_

Non-Confidential information: (The following information may be disclosed by Broker): \_\_\_\_\_

(Insert information you authorize the broker to disclose such as financial qualification information.)

### **Consent to Telephone Solicitation**

I/We agree that the broker and any affiliated settlement service providers (for example, a mortgage company or title company) may call our/my home or cell phone numbers regarding issues, goods and services related to the real estate transaction until I/we withdraw this consent in writing. List Home/Cell Numbers: \_\_\_\_\_

### **Sex Offender Registry**

Notice: You may obtain information about the sex offender registry and persons registered with the registry by contacting the Wisconsin Department of Corrections on the Internet at <http://offender.doc.state.wi.us/public/>

### **Definition of Material Adverse Facts**

A "material adverse fact" is defined in Wis. Stat 452.01 (5g) as an adverse fact that a party indicates is of such significance, or that is generally recognized by a competent licensee as being of such significance to a reasonable party, that it affects or would affect the party's decision to enter into a contract or agreement concerning a transaction or affects or would affect the party's decision to enter into a contract or agreement concerning a transaction or affects or would affect the party's decision about the terms of such a contract or agreement. An "adverse" fact is defined in Wis. Stat. 452.01 (1e) as a condition or occurrence that a competent licensee generally recognizes will significantly and adversely affect the value of the property, significantly reduce the structural integrity of improvements to real estate, or present a significant health risk to occupants of the property; or information that indicates that a party to a transaction is not able to or does not intend to meet his or her obligations under a contract or agreement made concerning the transaction.