

# Flex/Manufacturing Sublease in Torrance

savills

*Perfect for aerospace, defense, and manufacturing start-up companies*

**FOR SUBLEASE** 1978 Del Amo Boulevard, Suite B



## SPACE PROFILE

1,200  
**Total SF**

Feb 28, 2027  
**Term**

Negotiable  
**Rental rate**

Immediate  
**Availability**

18'  
**Clear Height**

1 Ground Level  
**Doors**

NA  
**Furniture**

200A, 120/208V, 3P  
**Power**

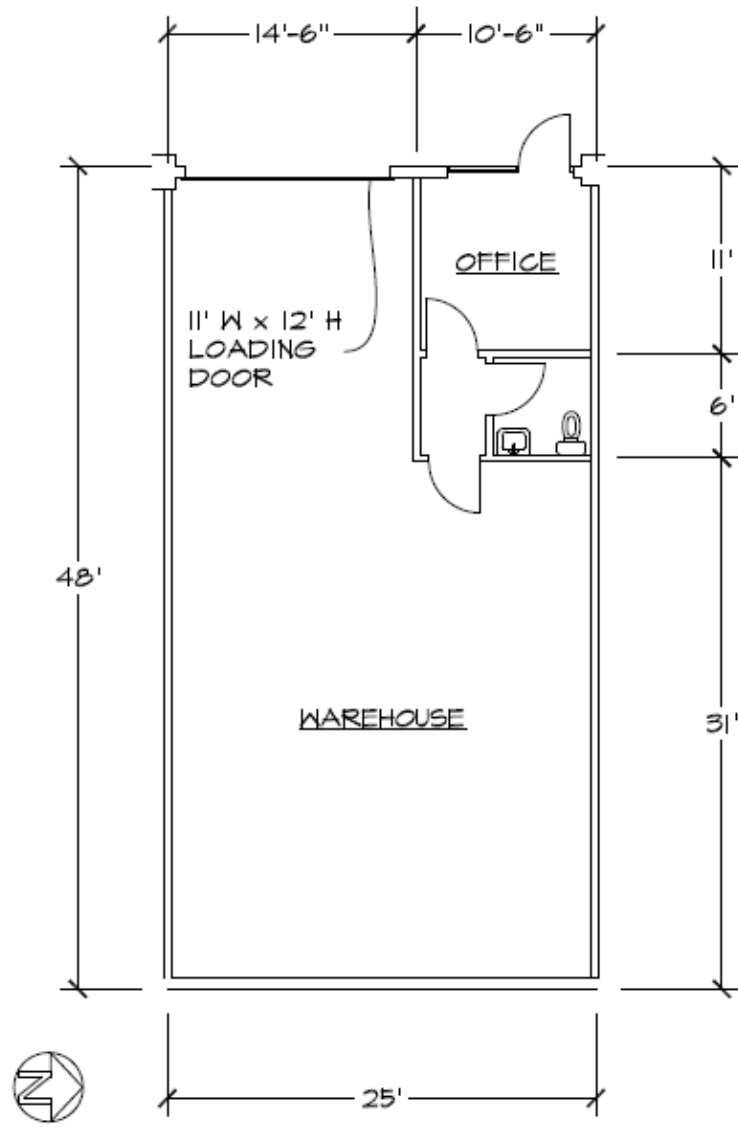


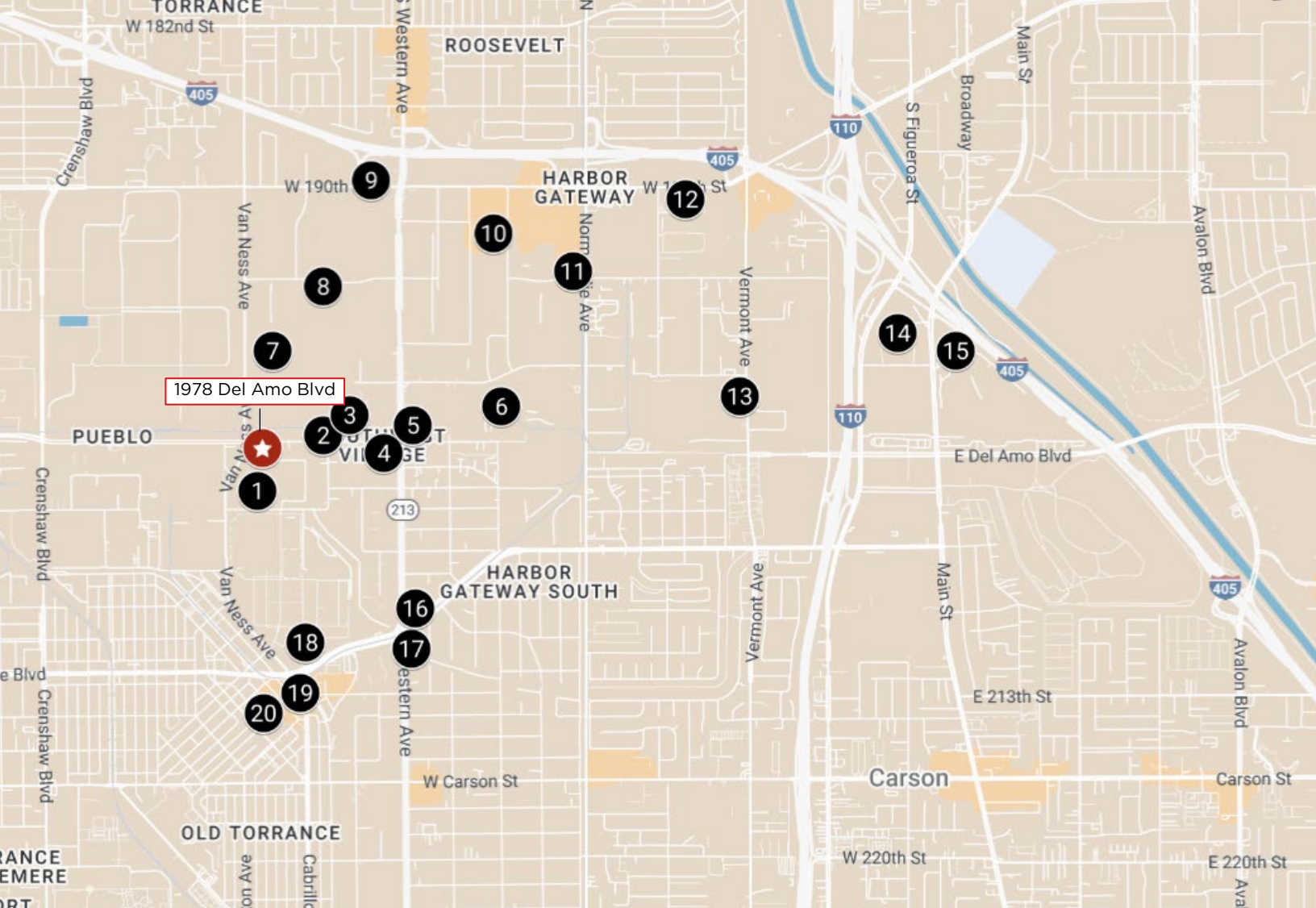
#### PROPERTY OVERVIEW

- Polished concrete warehouse flooring
- Walking distance to numerous amenities
- Excellent access to the 405 and 110 freeways









- |                                 |                               |
|---------------------------------|-------------------------------|
| 1. Virco                        | 11. Toyo Sushi                |
| 2. Smog City Brewing Co.        | 12. Nook Coffee Bar           |
| 3. Moog Aircraft Group          | 13. Amazon Logistics          |
| 4. Monkish Brewing Co.          | 14. Pepsi Bottling Company    |
| 5. Denso Ten America            | 15. Porsche Experience Center |
| 6. Frito-Lay                    | 16. Jessie Lord Bakery        |
| 7. Torrance Distribution Center | 17. Starbucks                 |
| 8. Arc Boat Company             | 18. American Honda Motor Co.  |
| 9. Shake Shack                  | 19. Madre! Oaxacan Restaurant |
| 10. King's Hawaiian Bakery      | 20. Torrance Bakery           |



### Chris Valcarcel

Associate  
+1 310 444 1067  
cvalcarcel@savills.us

### Demarco Duran

Corporate Managing Director  
+1 310 444 1015  
dduran@savills.us

The information contained in this communication has been obtained from a variety of sources believed to be reliable but has not been verified. NO WARRANTY OR REPRESENTATION, EXPRESS OR IMPLIED, IS MADE AS TO THE CONDITION OF THE PROPERTY OR ACCURACY OR COMPLETENESS OF THE INFORMATION CONTAINED HEREIN AND SAME IS SUBMITTED SUBJECT TO ERRORS, OMISSIONS, CHANGE OF PRICE, RENTAL OR OTHER CONDITIONS, WITHDRAWAL WITHOUT NOTICE AND TO ANY SPECIFIC CONDITIONS IMPOSED BY THE PROPERTY OWNER OR LESSOR.