

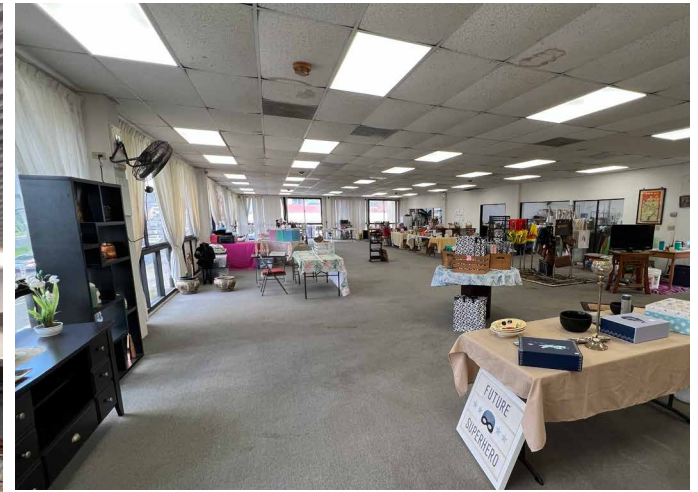
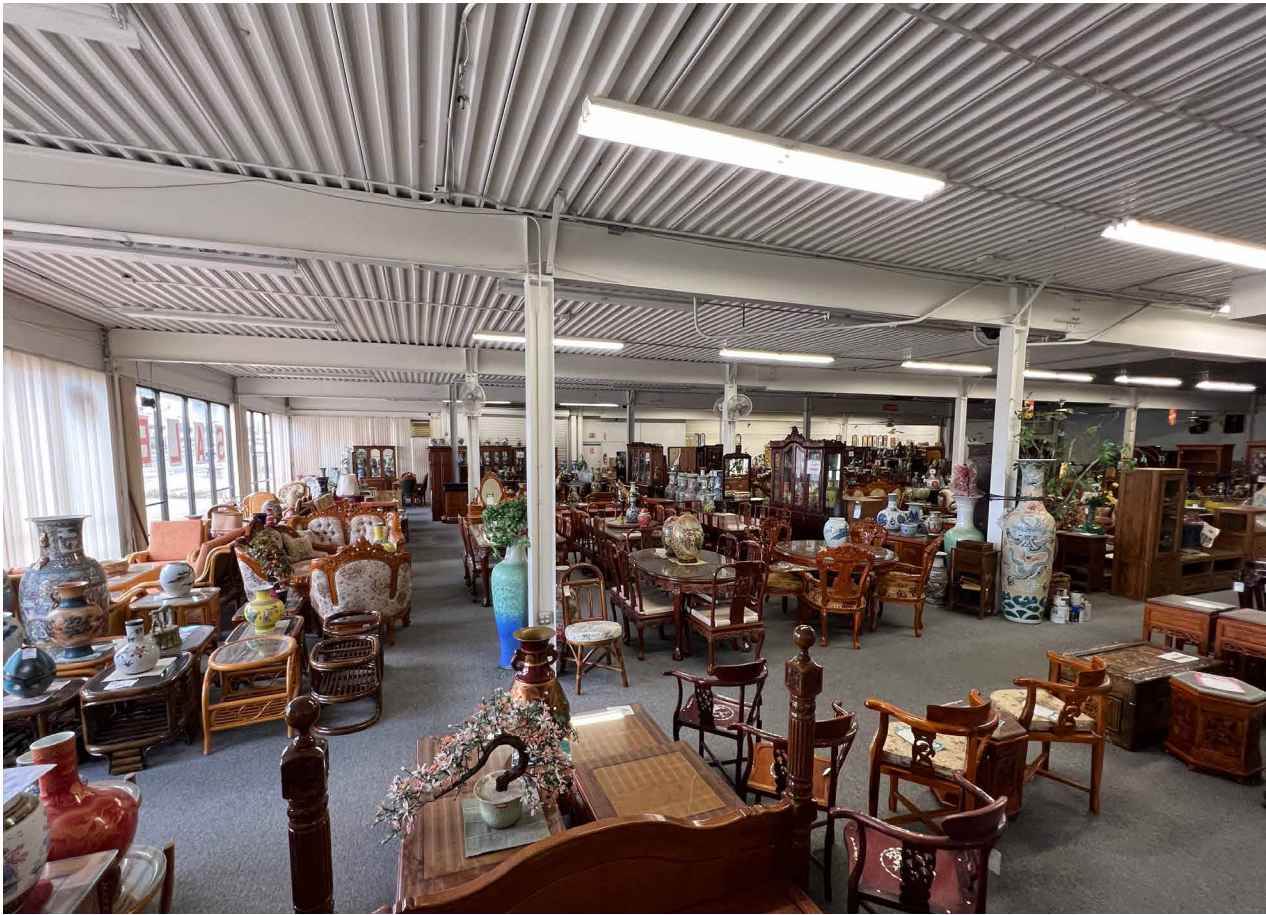


FOR SALE | FREESTANDING BUILDING IN WAIPAHU

94-303 FARRINGTON HIGHWAY · WAIPAHU, HAWAII 96797



INDUSTRIAL
GROUP HAWAII



PROPERTY DESCRIPTION

The property consists of 18,938 square feet of fee simple land with a two-story retail/office/warehouse building. The ground floor is currently used as a furniture showroom and is serviced by large 12'X14' roll up door, double wide glass entry door and includes large glass picture windows around most of the building. With over 100 linear feet of street frontage along Farrington Hwy., the building benefits from great visibility. The second floor is both showroom and high cube storage supported by

concrete floor and heavy structural steel support. There is access by way of stairwell and overhead cable lift system, and there is space for a freight elevator on the ground floor to the second floor. This is a rare opportunity with a fully functional second floor. The property is located in the Farrington/Leoku Transit Influenced Zone (TIZ) precinct with up zoning to BMX-3 that allows residential mixed use for future development with a height limit of 60 feet.



PROPERTY DETAILS

ASKING PRICE \$5,888,888

TMK I-9-4-49-58

ZONING BMX-3
(TIZ) PRECINCT

TENURE Fee Simple

YEAR BUILT 1985

FLOOD ZONE D - UNDETERMINED
FLOOD HAZARD

BUILDING AREA 20,802 SF

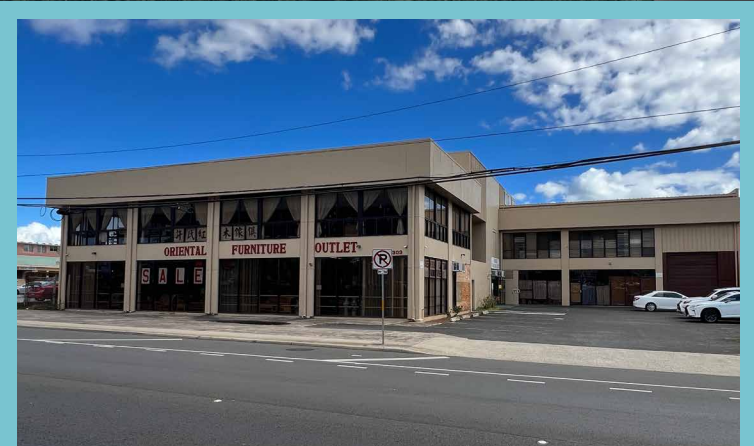
GROUND FLOOR 10,649 SF

SECOND FLOOR 10,153 SF

LAND SIZE 18,938 SF

PARKING 16 STALLS





94-303 FARRINGTON HIGHWAY

WAIPAHU INTERMEDIATE

LEOKANE STREET

LEOLEE STREET

FT. WEAVER ROAD

WALGREENS

FARRINGTON HWY

LEEWARD DRIVE INN

CENTRAL PAC. BANK

ZIPPY'S

SAVERS

DON QUIJOTE

MCDONALD'S



IGHI INDUSTRIAL GROUP HAWAII

JAY K. ELICKER (B) CCIM, SIOR
 Senior Vice President · RB 21204
 808-218-8318 · jelicker@caahawaii.com

KEVIN KO (S)
 Senior Associate · RS 82504
 808-971-1986 · kko@caahawaii.com

SEAN DO (S) CCIM
 Vice President · RS 75040
 808-387-6903 · sdo@caahawaii.com