

# Hwy 287 Frontage

## For Lease

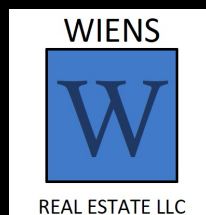
\$4,100/month

3080 W Highway 287 Bypass,  
Waxahachie, Texas 75167

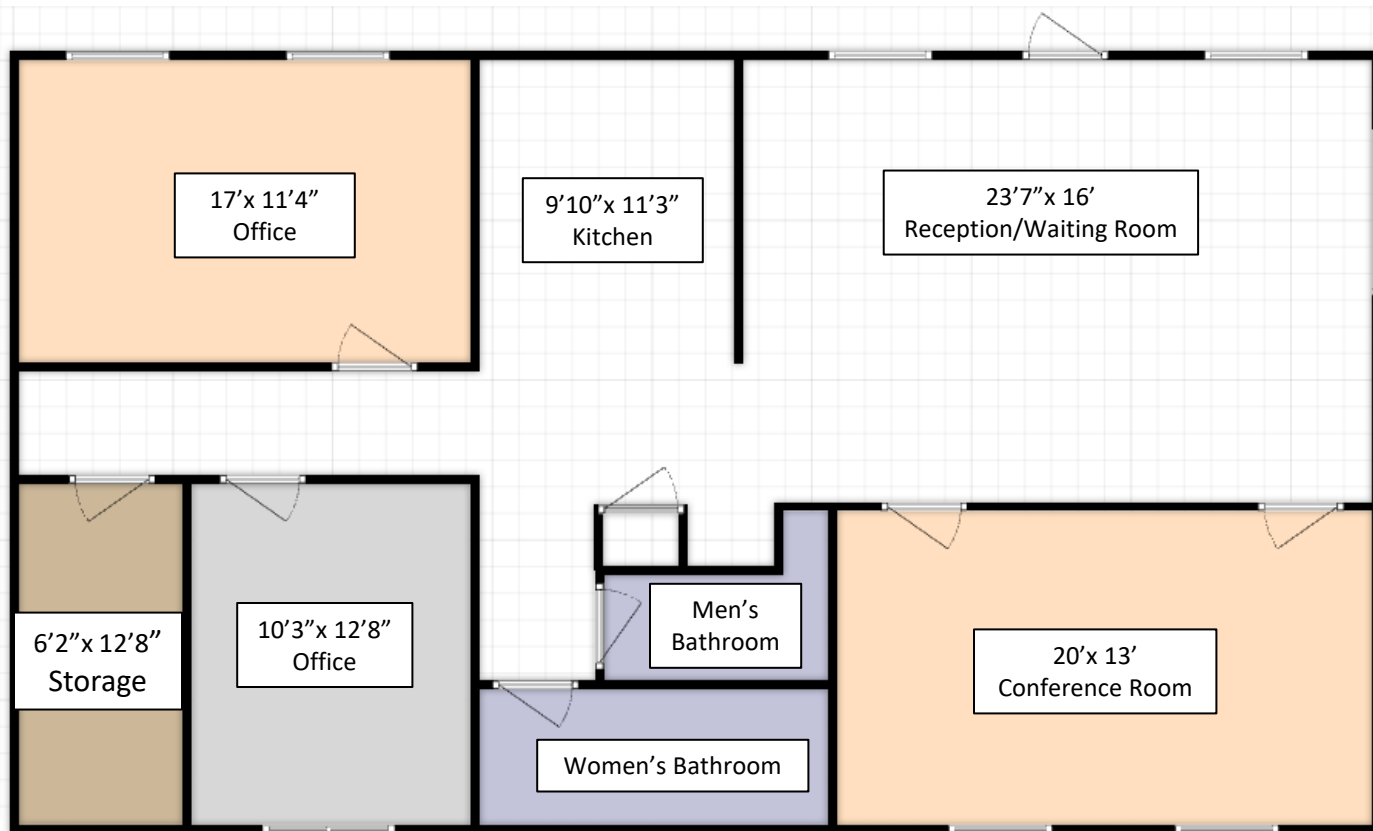


**Midlothian/Waxahachie**  
**High Growth**  
**Market**

1,640 SF  
Hwy Signage  
Reception Area  
Conference Room  
Kitchen  
2-4 Offices  
Storage/Electrical Room  
Men's and Women's  
Restrooms



Kim Wiens  
972-816-2008  
wiens@flash.net  
Kimberly Klor  
817-948-6940



# Floor Plan

**17 Parking Spaces/2 Handicap Parking Spaces**

## Fully Furnished



Kim Wiens 972-816-2008  
 wiens@flash.net  
 Kimberly Klor 817-948-6940



**3080 W Highway 287 Bypass, Waxahachie, Texas 75167**

**Conveniently Located Next to Midway Airport on Hwy 287  
between Waxahachie and Midlothian**





THANK  
YOU!

Wiens Real Estate LLC

***Phone:***

972-816-2008  
817-9480-6940

***Email:***

wiens@flash.net  
kimberlyaklor@gmail.com

***Broker:***

Kim Wiens