



# BRIGHT OAKS COURTYARD

2021 EMMORTON ROAD | BEL AIR, MARYLAND 21015

FOR  
LEASE



**MACKENZIE**

COMMERCIAL REAL ESTATE SERVICES, LLC



# PROPERTY OVERVIEW

## HIGHLIGHTS:

- Abundant, free on-site parking available
- High end finishes
- Excellent location in the heart of Harford County's population
- Air conditioning and heating controlled by tenant
- Zoned B-3, which is Harford County's designation for the highest level of retailer, office, and services



AVAILABLE:

BUILDING A:  
SUITE 218: 2,000 SF  
BUILDING B:  
SUITE 122: 2,038 SF

STORIES:

2

PARKING:

70 FREE SURFACE SPACES

RENTAL RATE:

\$20.00/SF, NNN

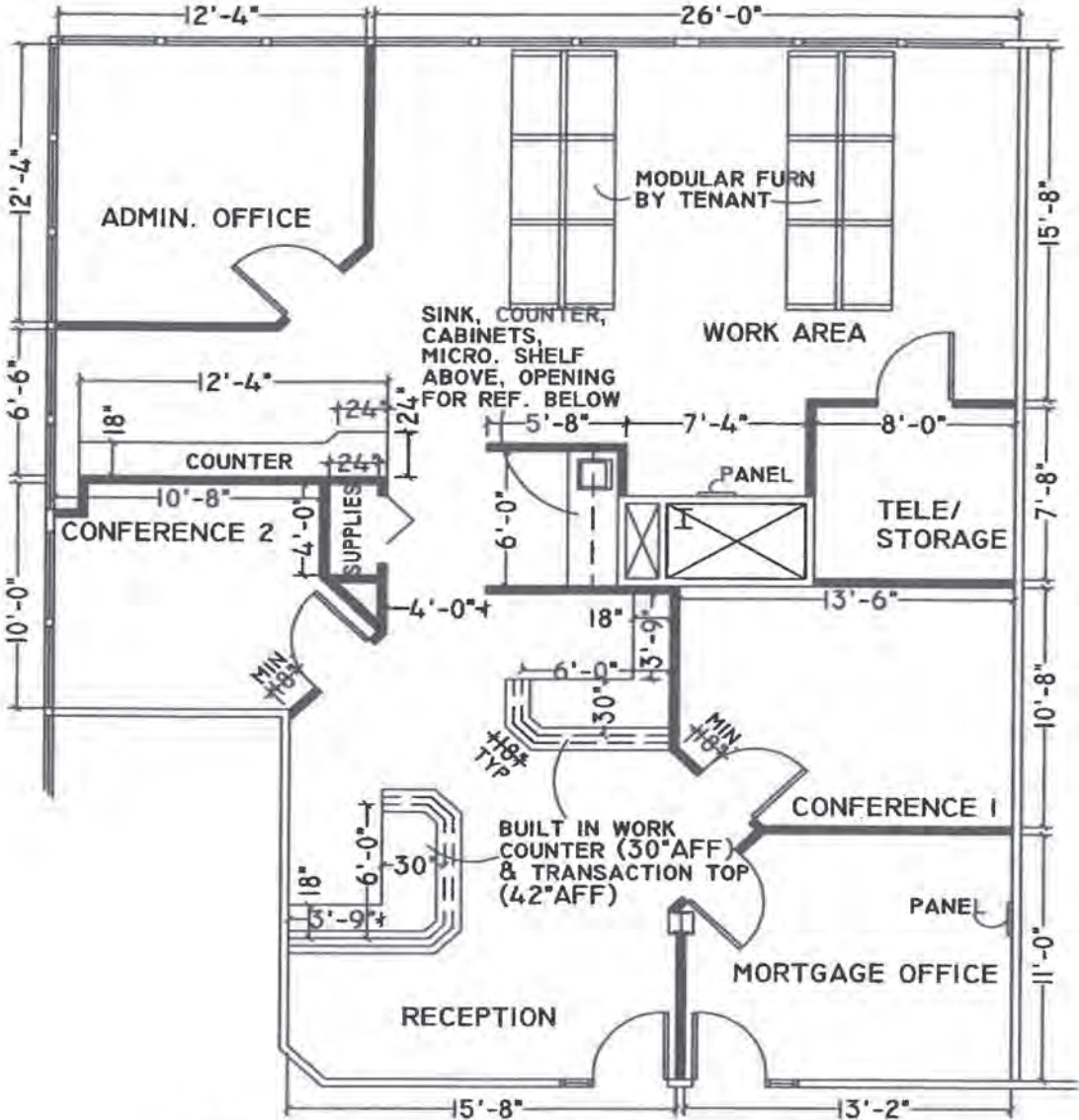


GOOGLE STREET VIEW



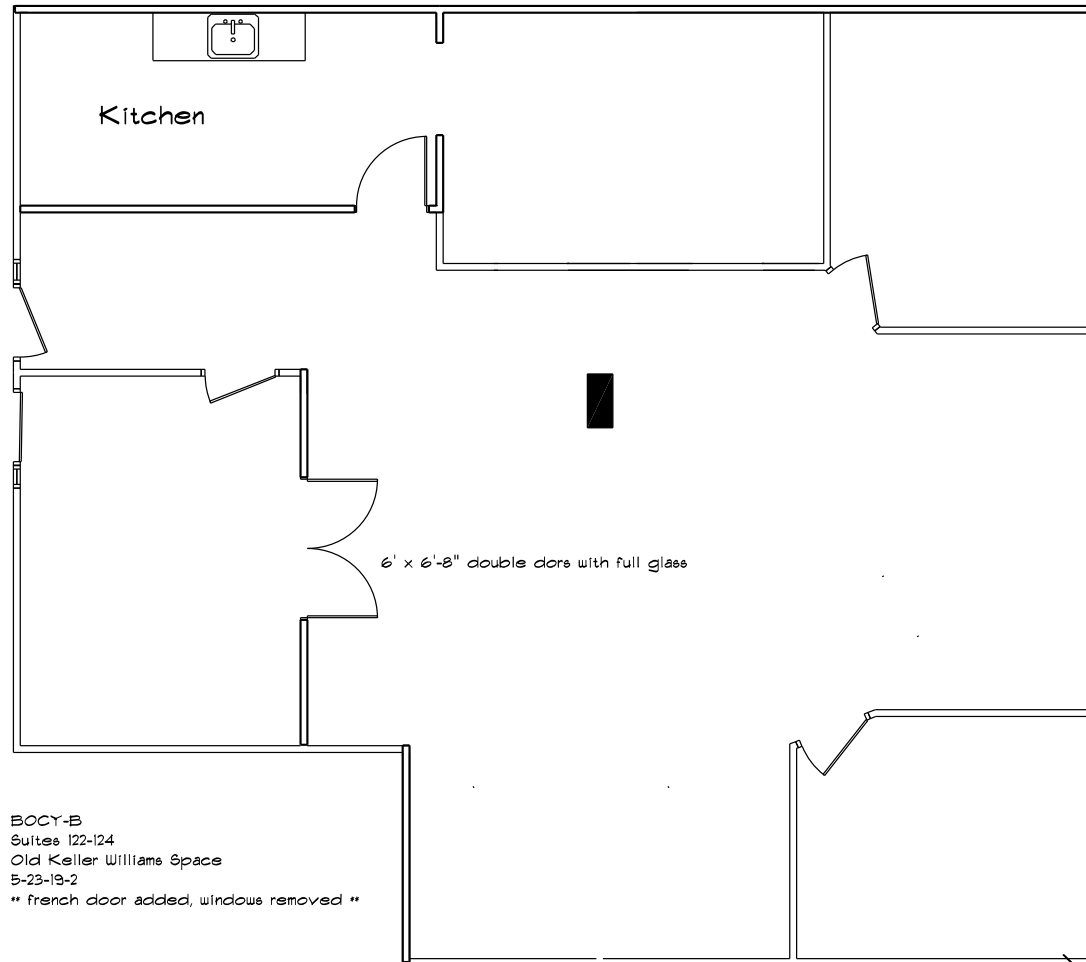


# FLOOR PLAN - BUILDING A - 218



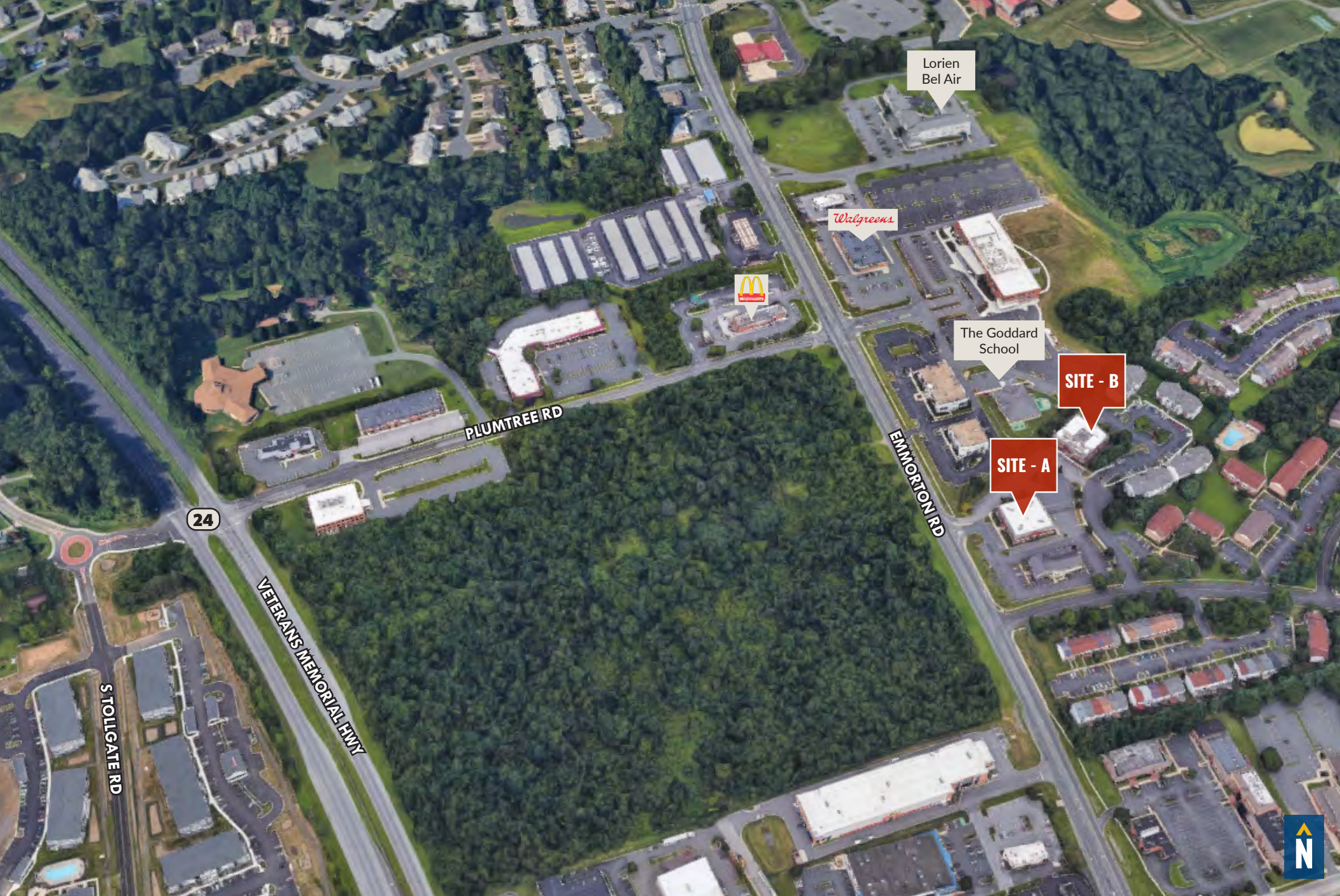
NOTE: DIMENSIONS ARE APPROX. FROM OWNER'S DRAWING.

# FLOOR PLAN - BUILDING B -122





# LOCAL BIRDSEYE



Lorien  
Bel Air

Walgreens



The Goddard  
School

SITE - B

SITE - A

24

PLUMTREE RD

EMMORTON RD

VETERANS MEMORIAL HWY

S TOLLGATE RD





# FOR MORE INFO **CONTACT:**



## **TOM MOTTLEY**

*SENIOR VICE PRESIDENT & PRINCIPAL*

**443.573.3217**

**TMOTTLEY@mackenziecommercial.com**



## **BEETLE SMITH**

*SENIOR VICE PRESIDENT*

**443.573.3219**

**BSMITH@mackenziecommercial.com**



# **MACKENZIE**

COMMERCIAL REAL ESTATE SERVICES, LLC

**410-879-1900**

3465 Box Hill Corporate Center Drive, Suite F  
Abingdon, MD 21009

OFFICES IN: **ANNAPOLIS** **BALTIMORE** **BEL AIR** **COLUMBIA** **LUTHERVILLE**

[www.MACKENZIECOMMERCIAL.com](http://www.MACKENZIECOMMERCIAL.com)



VISIT **PROPERTY PAGE** FOR MORE INFORMATION.

*No warranty or representation, expressed or implied, is made as to the accuracy of the information contained herein, and same is submitted subject to errors, omissions, change of price, rental or other conditions, withdrawal without notice, and to any specific listing conditions imposed by our principals.*