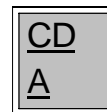




**Pinewood 30-A,
a Condominium
393 Holdings, LLC**

179 S. County Highway 393, Santa Rosa Beach, FL 32459

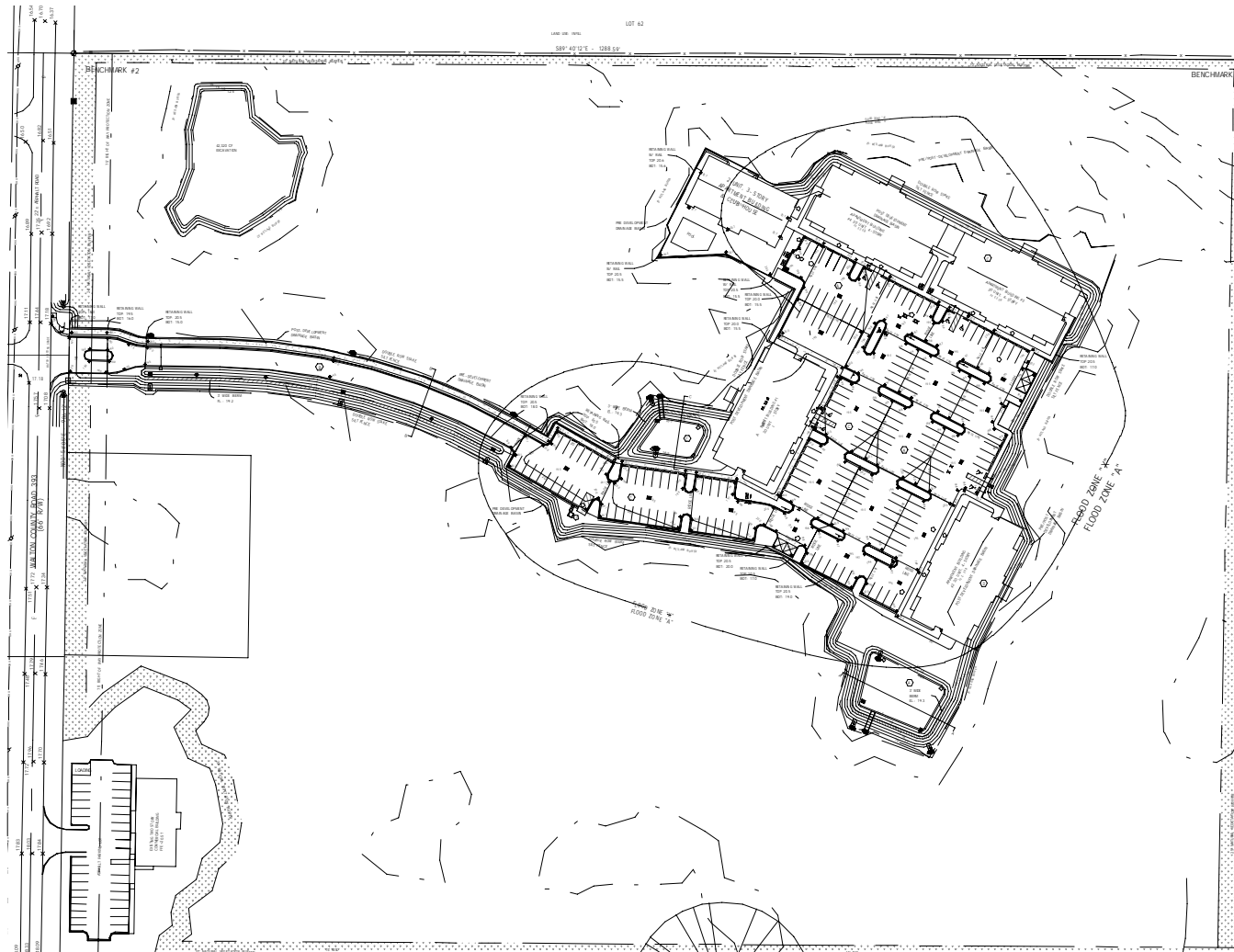
NOTE: ALL DIMENSIONS AND SQUARE FOOTAGE CALCULATIONS ARE MEASURED FROM THE STUD FACE OF THE INTERIOR WALLS. THE UNIT SQUARE FOOTAGE CALCULATIONS REPRESENT THE GROSS SQUARE FOOTAGE FOR THE UNIT AND INCLUDE ALL SPACE OCCUPIED BY INTERIOR WALLS, DRYWALL, PLUMBING FIXTURES, APPLIANCES, CABINETS, AND DOORS. ALL IMPROVEMENTS ARE PROPOSED.



Anthony J. Vallee, Architect - FL: AR95108
Firm License No. 28625

4639 Gulf Starr Drive
Destin, Florida 32541
Tel: 850.837.4664
Fax: 850.654.2000

A0.0



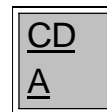
SITE PLAN

SCALE: 1/16" = 1'-0"

Pinewood 30-A,
a Condominium
393 Holdings, LLC

179 S. County Highway 393, Santa Rosa Beach, FL 32459

NOTE: ALL DIMENSIONS AND SQUARE FOOTAGE CALCULATIONS ARE MEASURED FROM THE STUD FACE OF THE INTERIOR WALLS. THE UNIT SQUARE FOOTAGE CALCULATIONS REPRESENT THE GROSS SQUARE FOOTAGE FOR THE UNIT AND INCLUDE ALL SPACE OCCUPIED BY INTERIOR WALLS, DRYWALL, PLUMBING FIXTURES, APPLIANCES, CABINETS, AND DOORS. ALL IMPROVEMENTS ARE PROPOSED.



4639 Gulf Starr Drive
Destin, Florida 32541
Tel: 850.837.4664
Fax: 850.654.2000

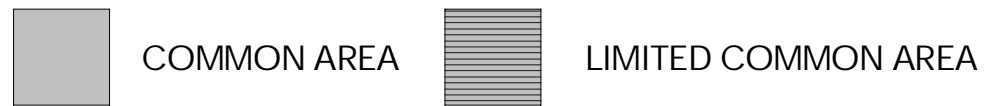
Anthony J. Vallee, Architect - FL: AR95108
Firm License No. 28625

A0.1



Building No. 1 FIRST FLOOR PLAN

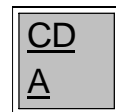
SCALE: 1/16" = 1'-0"



**Pinewood 30-A,
a Condominium**
393 Holdings, LLC

179 S. County Highway 393, Santa Rosa Beach, FL 32459

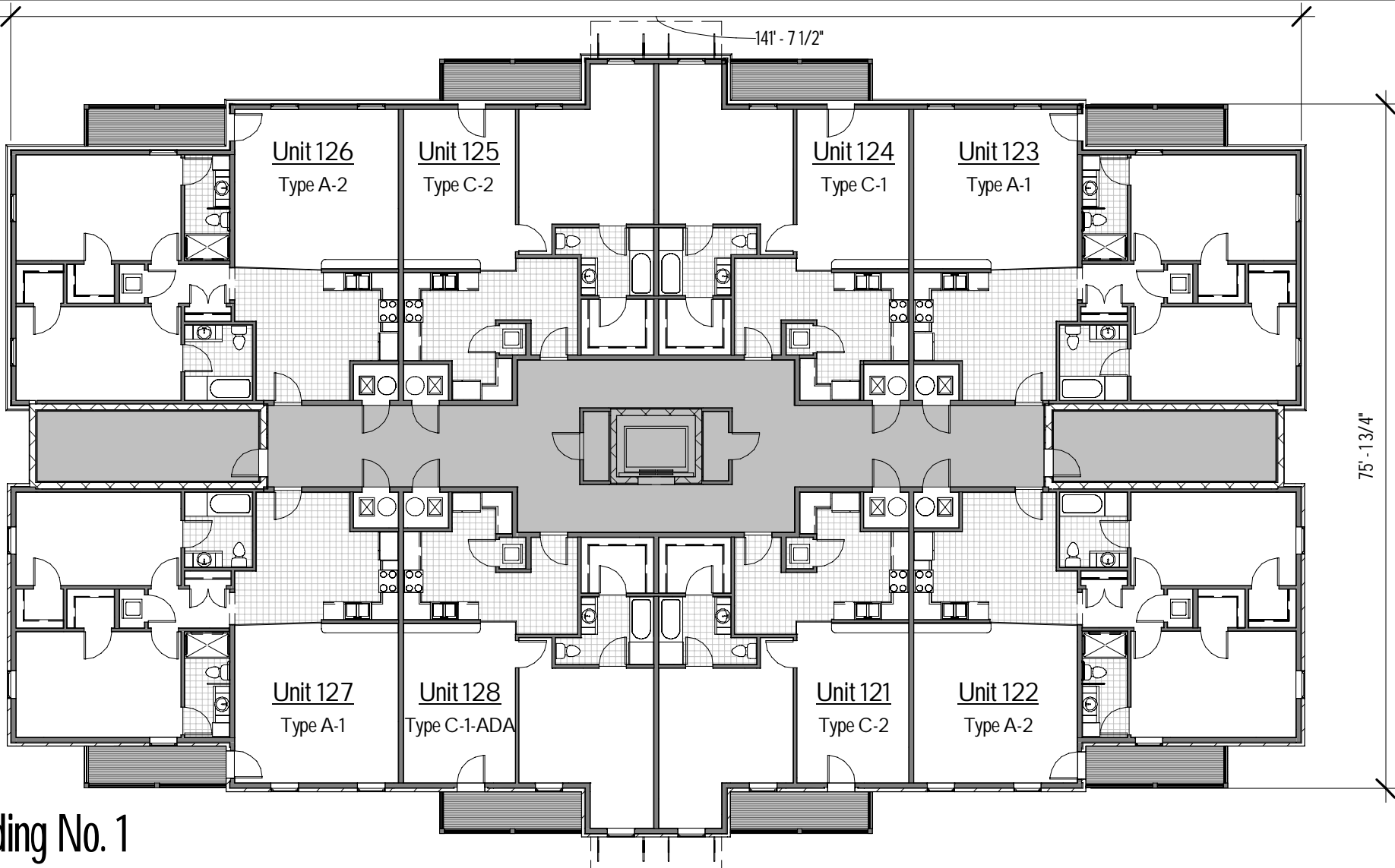
NOTE: ALL DIMENSIONS AND SQUARE FOOTAGE CALCULATIONS ARE MEASURED FROM THE STUD FACE OF THE INTERIOR WALLS. THE UNIT SQUARE FOOTAGE CALCULATIONS REPRESENT THE GROSS SQUARE FOOTAGE FOR THE UNIT AND INCLUDE ALL SPACE OCCUPIED BY INTERIOR WALLS, DRYWALL, PLUMBING FIXTURES, APPLIANCES, CABINETS, AND DOORS. ALL IMPROVEMENTS ARE PROPOSED.



4639 Gulf Starr Drive
Destin, Florida 32541
Tel: 850.837.4664
Fax: 850.654.2000

Anthony J. Vallee, Architect - FL: AR95108
Firm License No. 28625

A1.0



Building No. 1 SECOND FLOOR PLAN

SCALE: 1/16" = 1'-0"

COMMON AREA LIMITED COMMON AREA

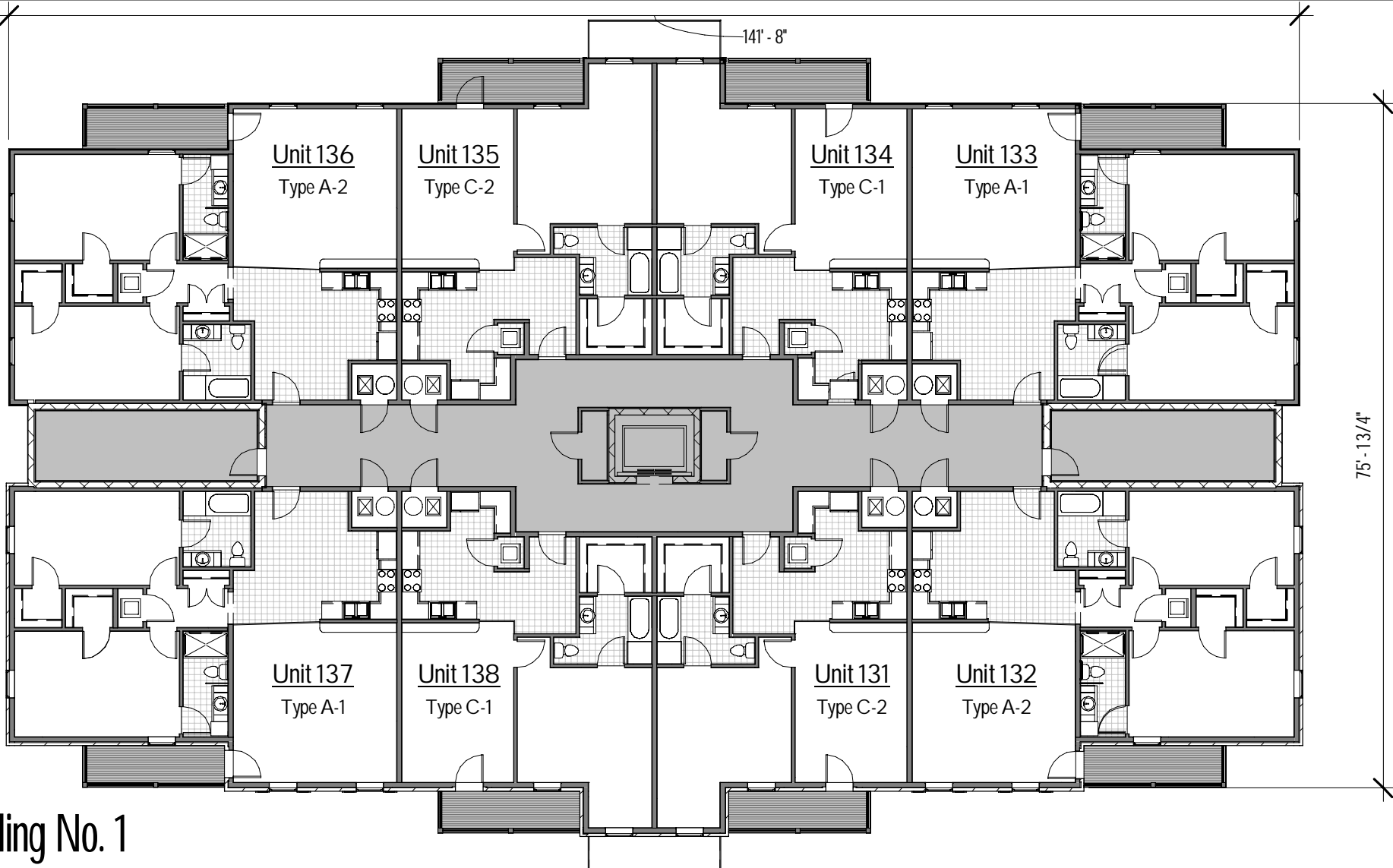
**Pinewood 30-A,
a Condominium**
393 Holdings, LLC
179 S. County Highway 393, Santa Rosa Beach, FL 32459

NOTE: ALL DIMENSIONS AND SQUARE FOOTAGE CALCULATIONS ARE MEASURED FROM THE STUD FACE OF THE INTERIOR WALLS. THE UNIT SQUARE FOOTAGE CALCULATIONS REPRESENT THE GROSS SQUARE FOOTAGE FOR THE UNIT AND INCLUDE ALL SPACE OCCUPIED BY INTERIOR WALLS, DRYWALL, PLUMBING FIXTURES, APPLIANCES, CABINETS, AND DOORS. ALL IMPROVEMENTS ARE PROPOSED.



CD
A
Anthony J. Vallee, Architect - FL: AR95108
Firm License No. 28625
4639 Gulf Starr Drive
Destin, Florida 32541
Tel: 850.837.4664
Fax: 850.654.2000

A2.0



Building No. 1 THIRD FLOOR PLAN

SCALE: 1/16" = 1'-0"

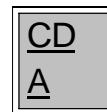
COMMON AREA

LIMITED COMMON AREA

Pinewood 30-A,
a Condominium
393 Holdings, LLC

179 S. County Highway 393, Santa Rosa Beach, FL 32459

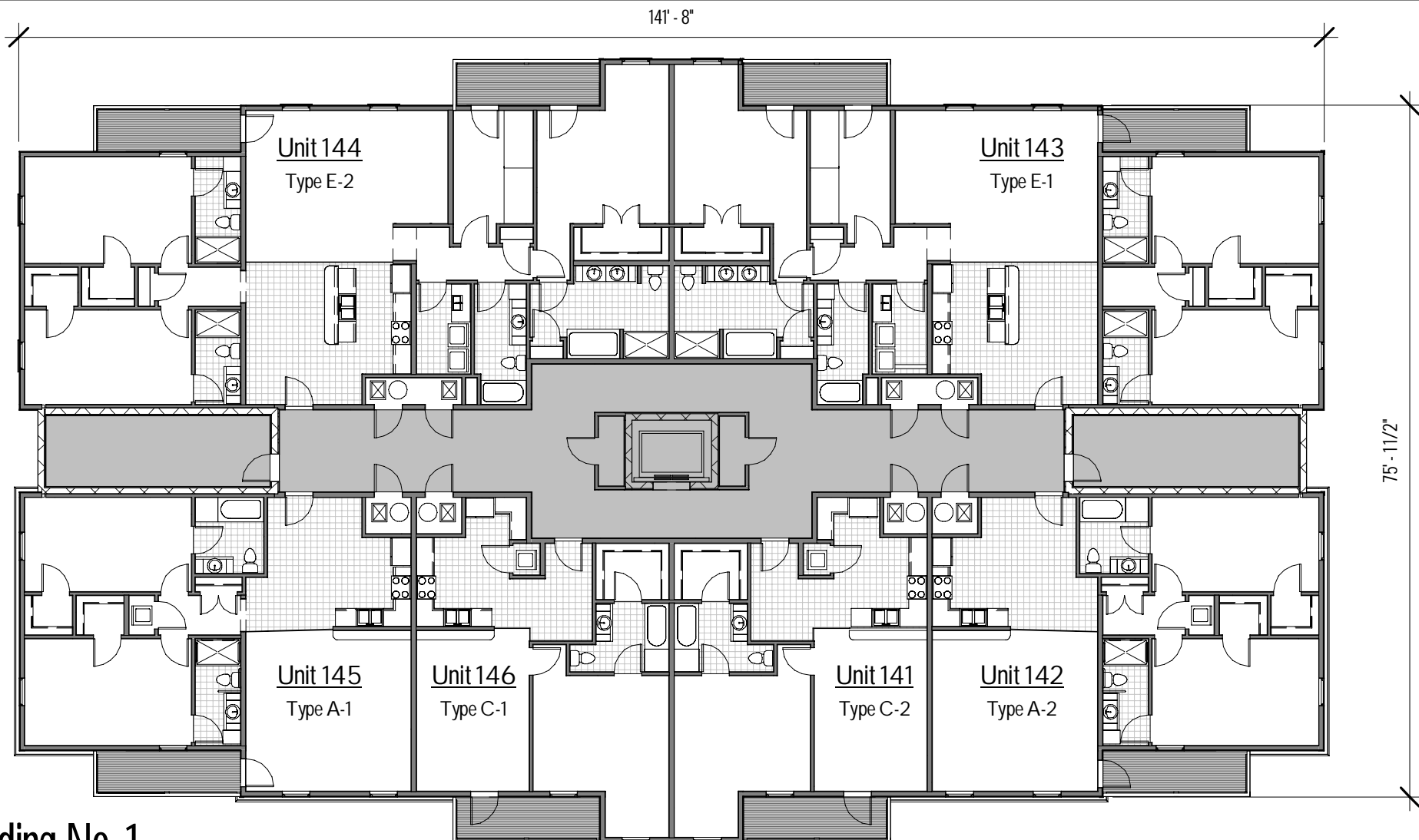
NOTE: ALL DIMENSIONS AND SQUARE FOOTAGE CALCULATIONS ARE MEASURED FROM THE STUD FACE OF THE INTERIOR WALLS. THE UNIT SQUARE FOOTAGE CALCULATIONS REPRESENT THE GROSS SQUARE FOOTAGE FOR THE UNIT AND INCLUDE ALL SPACE OCCUPIED BY INTERIOR WALLS, DRYWALL, PLUMBING FIXTURES, APPLIANCES, CABINETS, AND DOORS. ALL IMPROVEMENTS ARE PROPOSED.



4639 Gulf Starr Drive
Destin, Florida 32541
Tel: 850.837.4664
Fax: 850.654.2000

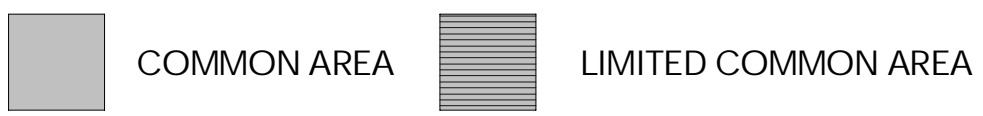
Anthony J. Vallee, Architect - FL: AR95108
Firm License No. 28625

A3.0



Building No. 1 FOURTH FLOOR PLAN

SCALE: 1/16" = 1'-0"



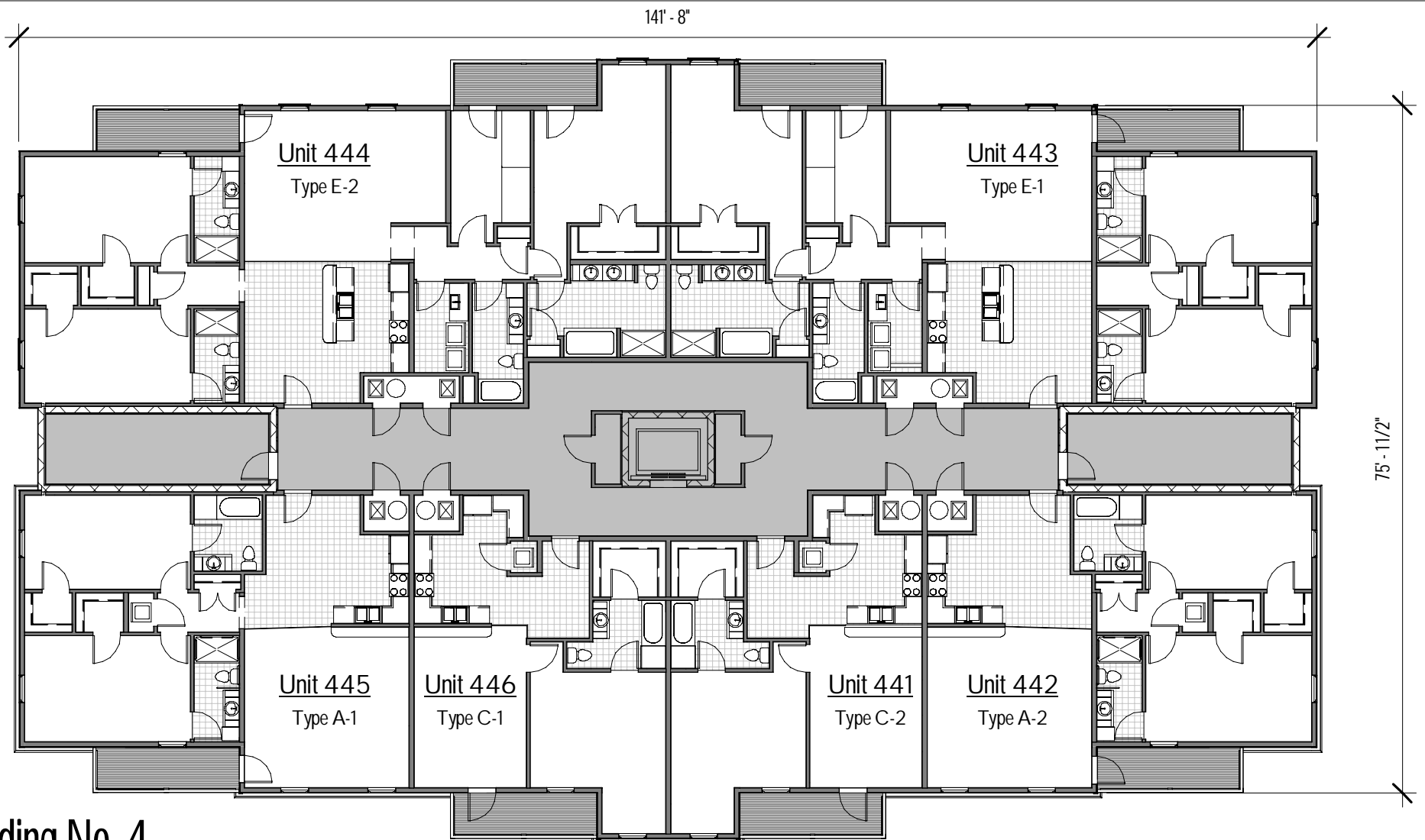
**Pinewood 30-A,
a Condominium**
393 Holdings, LLC
179 S. County Highway 393, Santa Rosa Beach, FL 32459

NOTE: ALL DIMENSIONS AND SQUARE FOOTAGE CALCULATIONS ARE MEASURED FROM THE STUD FACE OF THE INTERIOR WALLS. THE UNIT SQUARE FOOTAGE CALCULATIONS REPRESENT THE GROSS SQUARE FOOTAGE FOR THE UNIT AND INCLUDE ALL SPACE OCCUPIED BY INTERIOR WALLS, DRYWALL, PLUMBING FIXTURES, APPLIANCES, CABINETS, AND DOORS. ALL IMPROVEMENTS ARE PROPOSED.



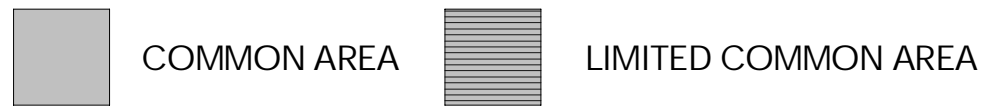
CD
A
Anthony J. Vallee, Architect - FL: AR95108
Firm License No. 28625
4639 Gulf Starr Drive
Destin, Florida 32541
Tel: 850.837.4664
Fax: 850.654.2000

A4.0



Building No. 4 FOURTH FLOOR PLAN

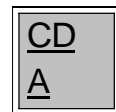
SCALE: 1/16" = 1'-0"



Pinewood 30-A,
a Condominium
393 Holdings, LLC

179 S. County Highway 393, Santa Rosa Beach, FL 32459

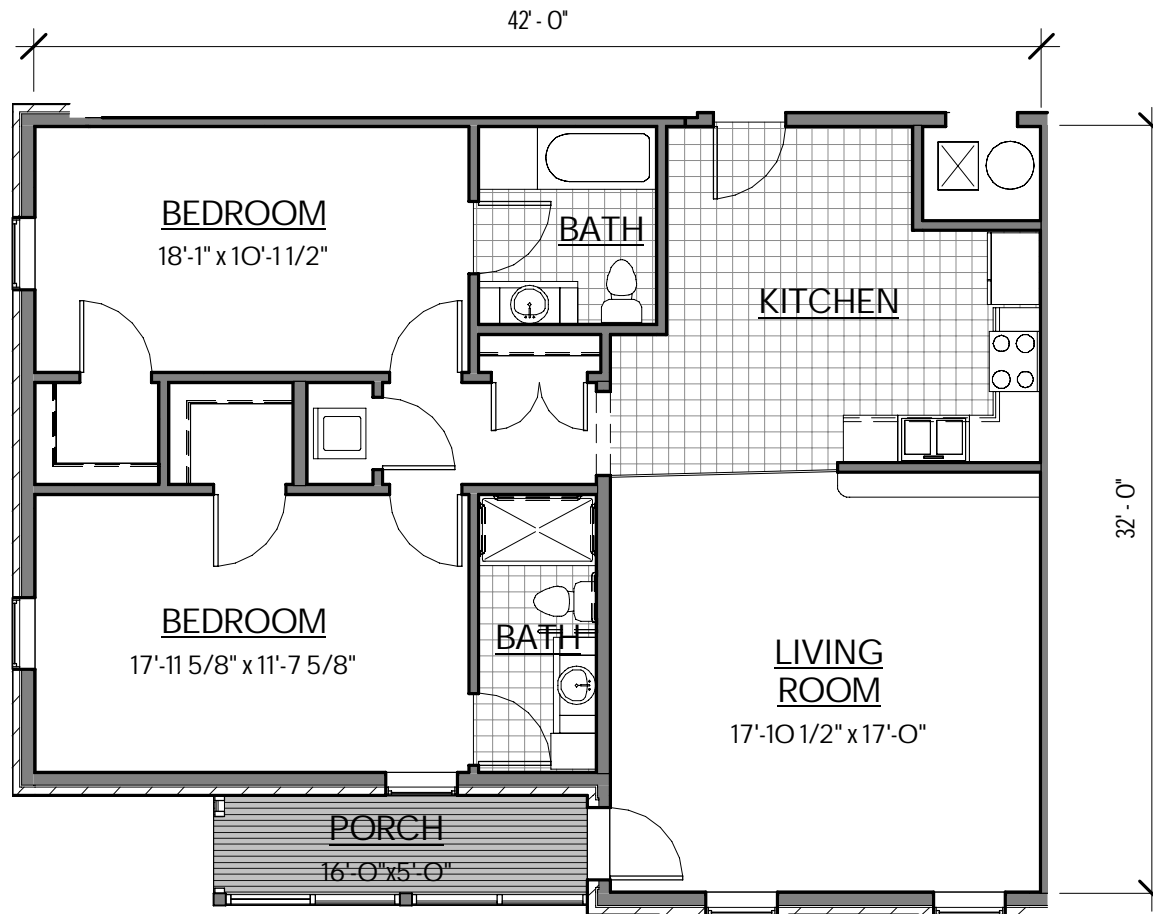
NOTE: ALL DIMENSIONS AND SQUARE FOOTAGE CALCULATIONS ARE MEASURED FROM THE STUD FACE OF THE INTERIOR WALLS. THE UNIT SQUARE FOOTAGE CALCULATIONS REPRESENT THE GROSS SQUARE FOOTAGE FOR THE UNIT AND INCLUDE ALL SPACE OCCUPIED BY INTERIOR WALLS, DRYWALL, PLUMBING FIXTURES, APPLIANCES, CABINETS, AND DOORS. ALL IMPROVEMENTS ARE PROPOSED.



4639 Gulf Starr Drive
Destin, Florida 32541
Tel: 850.837.4664
Fax: 850.654.2000

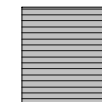
Anthony J. Vallee, Architect - FL: AR95108
Firm License No. 28625

A4.3



UNIT A-1

SCALE: 1/8" = 1'-0"



LIMITED COMMON AREA

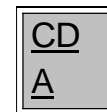
UNITS THIS TYPE: 113, 123, 127, 133, 137, 145, 213, 223, 227, 233, 237, 245, 313, 323, 327, 333, 337, 345, 413, 423, 427, 433, 437 & 445

UNIT AREA: 1,224 SF

**Pinewood 30-A,
a Condominium
393 Holdings, LLC**

179 S. County Highway 393, Santa Rosa Beach, FL 32459

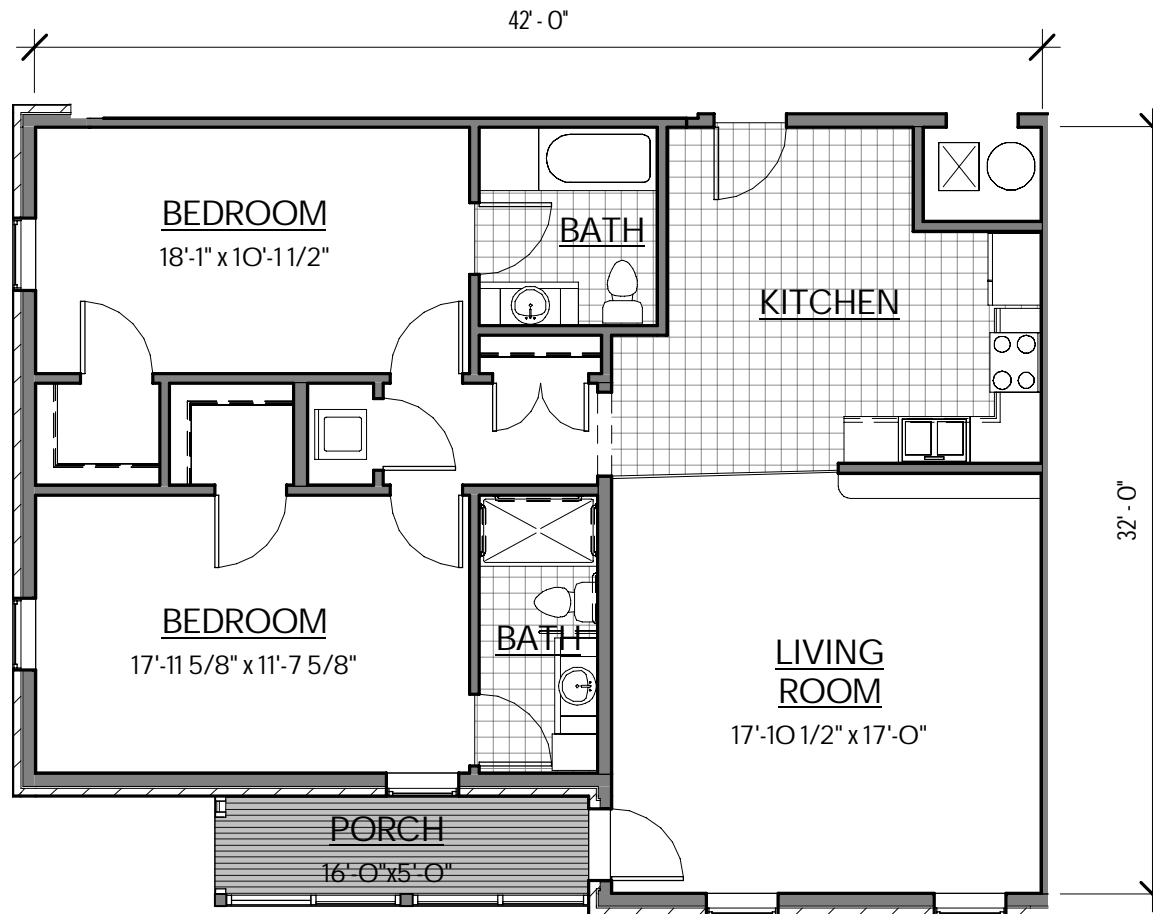
NOTE: ALL DIMENSIONS AND SQUARE FOOTAGE CALCULATIONS ARE MEASURED FROM THE STUD FACE OF THE INTERIOR WALLS. THE UNIT SQUARE FOOTAGE CALCULATIONS REPRESENT THE GROSS SQUARE FOOTAGE FOR THE UNIT AND INCLUDE ALL SPACE OCCUPIED BY INTERIOR WALLS, DRYWALL, PLUMBING FIXTURES, APPLIANCES, CABINETS, AND DOORS. ALL IMPROVEMENTS ARE PROPOSED.



Anthony J. Vallee, Architect - FL: AR95108
Firm License No. 28625

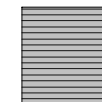
4639 Gulf Starr Drive
Destin, Florida 32541
Tel: 850.837.4664
Fax: 850.654.2000

A5.0



UNIT A-1 ADA

SCALE: 1/8" = 1'-0"



LIMITED COMMON AREA

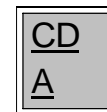
UNITS THIS TYPE: 117, 217, 317 & 417

UNIT AREA: 1,224 SF

Pinewood 30-A,
a Condominium
393 Holdings, LLC

179 S. County Highway 393, Santa Rosa Beach, FL 32459

NOTE: ALL DIMENSIONS AND SQUARE FOOTAGE CALCULATIONS ARE MEASURED FROM THE STUD FACE OF THE INTERIOR WALLS. THE UNIT SQUARE FOOTAGE CALCULATIONS REPRESENT THE GROSS SQUARE FOOTAGE FOR THE UNIT AND INCLUDE ALL SPACE OCCUPIED BY INTERIOR WALLS, DRYWALL, PLUMBING FIXTURES, APPLIANCES, CABINETS, AND DOORS. ALL IMPROVEMENTS ARE PROPOSED.



4639 Gulf Starr Drive
 Destin, Florida 32541
 Tel: 850.837.4664
 Fax: 850.654.2000

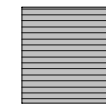
Anthony J. Vallee, Architect - FL: AR95108
 Firm License No. 28625

A5.0
ADA



UNIT A-2

SCALE: 1/8" = 1'-0"



LIMITED COMMON AREA

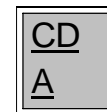
UNITS THIS TYPE: 112, 116, 122, 126, 132, 136, 142, 212, 216, 222, 226, 232, 236, 242, 312, 316, 322, 326, 332, 336, 342, 412, 416, 422, 426, 432, 436 & 442

UNIT AREA: 1,224 SF

**Pinewood 30-A,
a Condominium
393 Holdings, LLC**

179 S. County Highway 393, Santa Rosa Beach, FL 32459

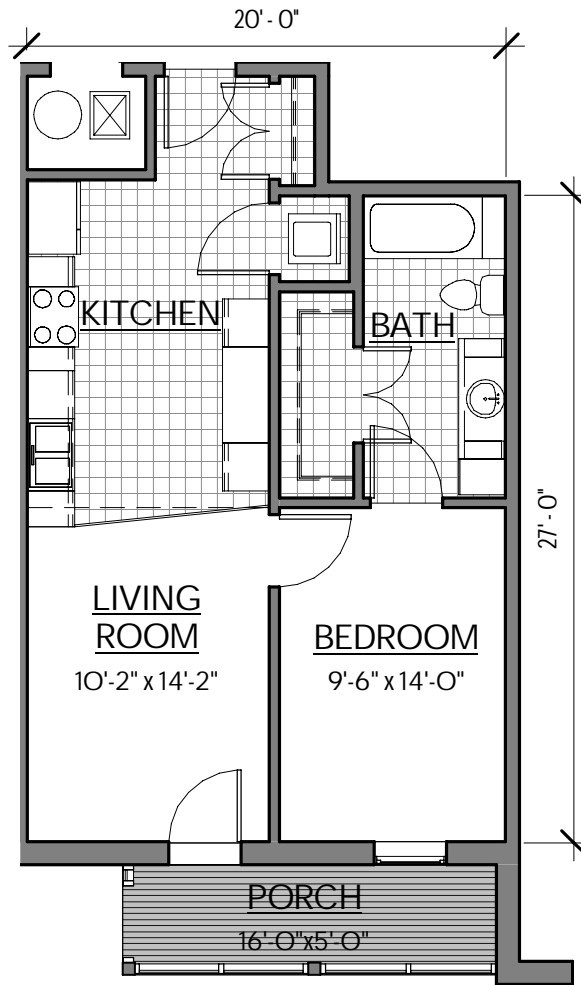
NOTE: ALL DIMENSIONS AND SQUARE FOOTAGE CALCULATIONS ARE MEASURED FROM THE STUD FACE OF THE INTERIOR WALLS. THE UNIT SQUARE FOOTAGE CALCULATIONS REPRESENT THE GROSS SQUARE FOOTAGE FOR THE UNIT AND INCLUDE ALL SPACE OCCUPIED BY INTERIOR WALLS, DRYWALL, PLUMBING FIXTURES, APPLIANCES, CABINETS, AND DOORS. ALL IMPROVEMENTS ARE PROPOSED.



Anthony J. Vallee, Architect - FL: AR95108
Firm License No. 28625

4639 Gulf Starr Drive
Destin, Florida 32541
Tel: 850.837.4664
Fax: 850.654.2000

A5.1



UNIT B-1

SCALE: 1/8" = 1'-0"



LIMITED COMMON AREA

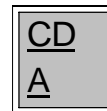
UNITS THIS TYPE: 118, 218, 318 & 418

UNIT AREA: 600 SF

**Pinewood 30-A,
a Condominium
393 Holdings, LLC**

179 S. County Highway 393, Santa Rosa Beach, FL 32459

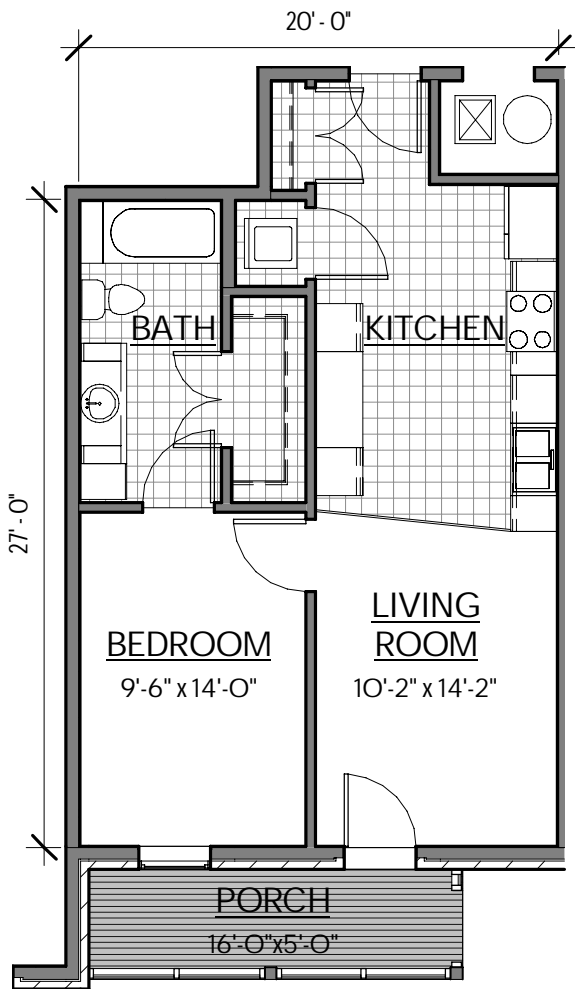
NOTE: ALL DIMENSIONS AND SQUARE FOOTAGE CALCULATIONS ARE MEASURED FROM THE STUD FACE OF THE INTERIOR WALLS. THE UNIT SQUARE FOOTAGE CALCULATIONS REPRESENT THE GROSS SQUARE FOOTAGE FOR THE UNIT AND INCLUDE ALL SPACE OCCUPIED BY INTERIOR WALLS, DRYWALL, PLUMBING FIXTURES, APPLIANCES, CABINETS, AND DOORS. ALL IMPROVEMENTS ARE PROPOSED.



4639 Gulf Starr Drive
Destin, Florida 32541
Tel: 850.837.4664
Fax: 850.654.2000

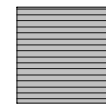
Anthony J. Vallee, Architect - FL: AR95108
Firm License No. 28625

A5.2



UNIT B-2

SCALE: 1/8" = 1'-0"



LIMITED COMMON AREA

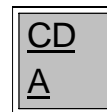
UNITS THIS TYPE: 111, 211, 311 & 411

UNIT AREA: 600 SF

Pinewood 30-A,
a Condominium
393 Holdings, LLC

179 S. County Highway 393, Santa Rosa Beach, FL 32459

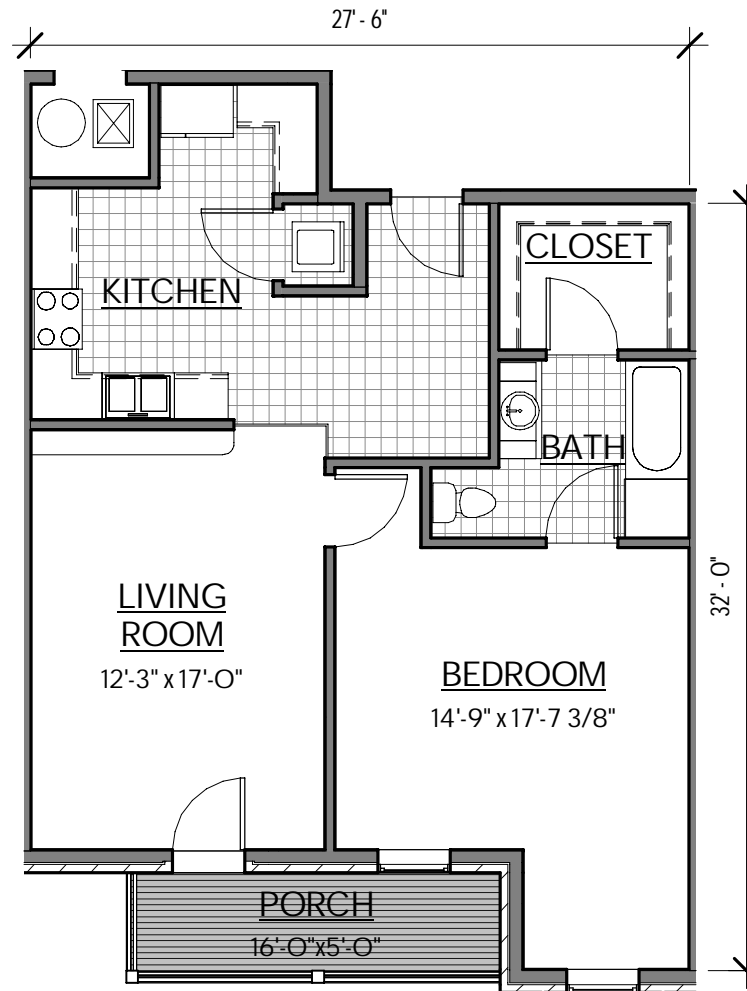
NOTE: ALL DIMENSIONS AND SQUARE FOOTAGE CALCULATIONS ARE MEASURED FROM THE STUD FACE OF THE INTERIOR WALLS. THE UNIT SQUARE FOOTAGE CALCULATIONS REPRESENT THE GROSS SQUARE FOOTAGE FOR THE UNIT AND INCLUDE ALL SPACE OCCUPIED BY INTERIOR WALLS, DRYWALL, PLUMBING FIXTURES, APPLIANCES, CABINETS, AND DOORS. ALL IMPROVEMENTS ARE PROPOSED.



4639 Gulf Starr Drive
Destin, Florida 32541
Tel: 850.837.4664
Fax: 850.654.2000

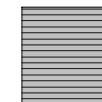
Anthony J. Vallee, Architect - FL: AR95108
Firm License No. 28625

A5.3



UNIT C-1

SCALE: 1/8" = 1'-0"



LIMITED COMMON AREA

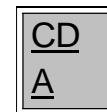
UNITS THIS TYPE: 124, 134, 138, 146, 224, 234, 238, 246, 324, 334, 338, 346, 424, 434, 438 & 446

UNIT AREA: 837.5 SF

**Pinewood 30-A,
a Condominium
393 Holdings, LLC**

179 S. County Highway 393, Santa Rosa Beach, FL 32459

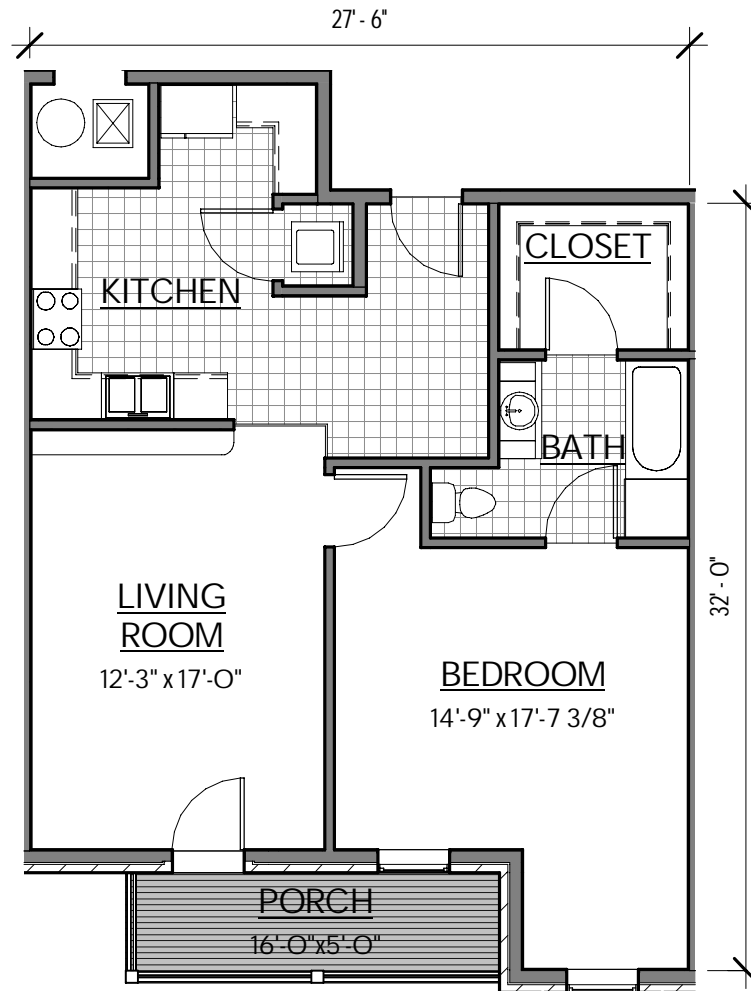
NOTE: ALL DIMENSIONS AND SQUARE FOOTAGE CALCULATIONS ARE MEASURED FROM THE STUD FACE OF THE INTERIOR WALLS. THE UNIT SQUARE FOOTAGE CALCULATIONS REPRESENT THE GROSS SQUARE FOOTAGE FOR THE UNIT AND INCLUDE ALL SPACE OCCUPIED BY INTERIOR WALLS, DRYWALL, PLUMBING FIXTURES, APPLIANCES, CABINETS, AND DOORS. ALL IMPROVEMENTS ARE PROPOSED.



4639 Gulf Starr Drive
Destin, Florida 32541
Tel: 850.837.4664
Fax: 850.654.2000

Anthony J. Vallee, Architect - FL: AR95108
Firm License No. 28625

A5.4



UNIT C-1 ADA

SCALE: 1/8" = 1'-0"



LIMITED COMMON AREA

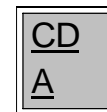
UNITS THIS TYPE: 128, 228, 328 & 428

UNIT AREA: 837.5 SF

Pinewood 30-A,
a Condominium
393 Holdings, LLC

179 S. County Highway 393, Santa Rosa Beach, FL 32459

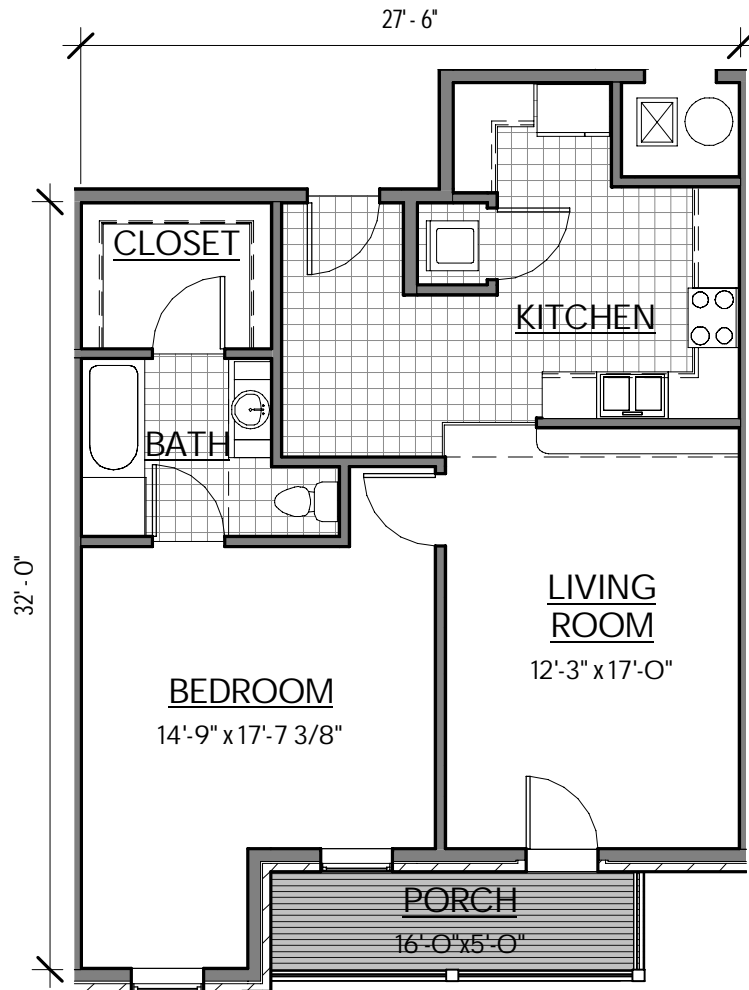
NOTE: ALL DIMENSIONS AND SQUARE FOOTAGE CALCULATIONS ARE MEASURED FROM THE STUD FACE OF THE INTERIOR WALLS. THE UNIT SQUARE FOOTAGE CALCULATIONS REPRESENT THE GROSS SQUARE FOOTAGE FOR THE UNIT AND INCLUDE ALL SPACE OCCUPIED BY INTERIOR WALLS, DRYWALL, PLUMBING FIXTURES, APPLIANCES, CABINETS, AND DOORS. ALL IMPROVEMENTS ARE PROPOSED.



4639 Gulf Starr Drive
Destin, Florida 32541
Tel: 850.837.4664
Fax: 850.654.2000

Anthony J. Vallee, Architect - FL: AR95108
Firm License No. 28625

A5.4
ADA



UNIT C-2

SCALE: 1/8" = 1'-0"



LIMITED COMMON AREA

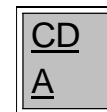
UNITS THIS TYPE: 121, 125, 131, 135, 141, 221, 225, 231, 235, 241, 321, 325, 331, 335, 341, 421, 425, 431, 435 & 441

UNIT AREA: 837.5 SF

**Pinewood 30-A,
a Condominium
393 Holdings, LLC**

179 S. County Highway 393, Santa Rosa Beach, FL 32459

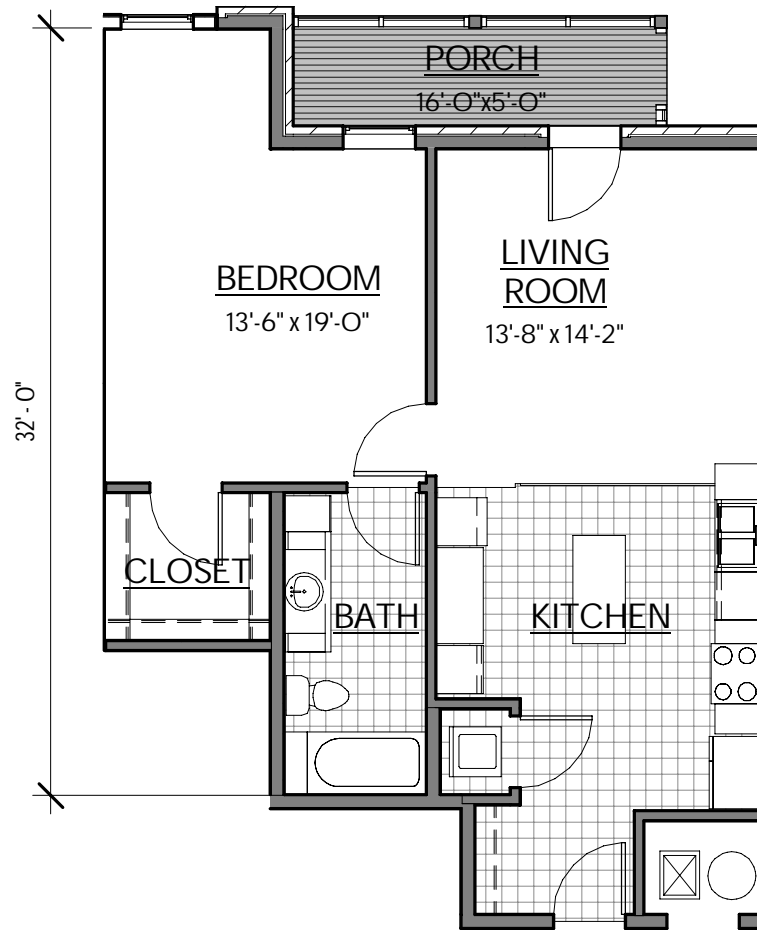
NOTE: ALL DIMENSIONS AND SQUARE FOOTAGE CALCULATIONS ARE MEASURED FROM THE STUD FACE OF THE INTERIOR WALLS. THE UNIT SQUARE FOOTAGE CALCULATIONS REPRESENT THE GROSS SQUARE FOOTAGE FOR THE UNIT AND INCLUDE ALL SPACE OCCUPIED BY INTERIOR WALLS, DRYWALL, PLUMBING FIXTURES, APPLIANCES, CABINETS, AND DOORS. ALL IMPROVEMENTS ARE PROPOSED.



4639 Gulf Starr Drive
Destin, Florida 32541
Tel: 850.837.4664
Fax: 850.654.2000

Anthony J. Vallee, Architect - FL: AR95108
Firm License No. 28625

A5.5



UNIT D-1

SCALE: 1/8" = 1'-0"



LIMITED COMMON AREA

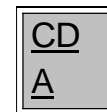
UNITS THIS TYPE: 114, 214, 314 & 414

UNIT AREA: 785 SF

**Pinewood 30-A,
a Condominium
393 Holdings, LLC**

179 S. County Highway 393, Santa Rosa Beach, FL 32459

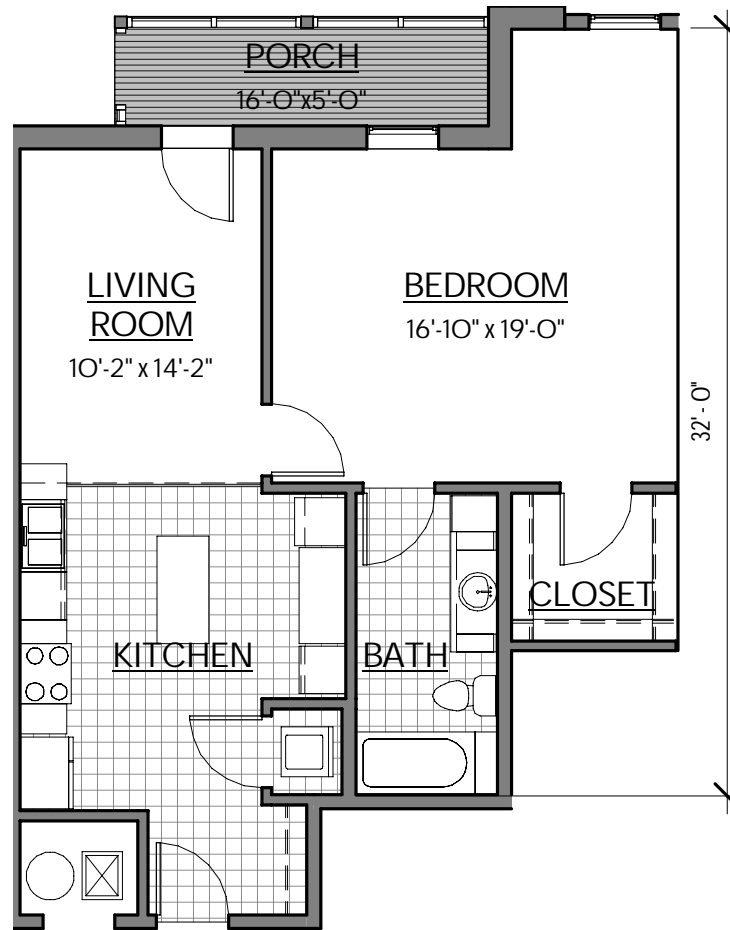
NOTE: ALL DIMENSIONS AND SQUARE FOOTAGE CALCULATIONS ARE MEASURED FROM THE STUD FACE OF THE INTERIOR WALLS. THE UNIT SQUARE FOOTAGE CALCULATIONS REPRESENT THE GROSS SQUARE FOOTAGE FOR THE UNIT AND INCLUDE ALL SPACE OCCUPIED BY INTERIOR WALLS, DRYWALL, PLUMBING FIXTURES, APPLIANCES, CABINETS, AND DOORS. ALL IMPROVEMENTS ARE PROPOSED.



4639 Gulf Starr Drive
Destin, Florida 32541
Tel: 850.837.4664
Fax: 850.654.2000

Anthony J. Vallee, Architect - FL: AR95108
Firm License No. 28625

A5.6



UNIT D-2

SCALE: 1/8" = 1'-0"



LIMITED COMMON AREA

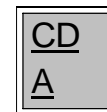
UNITS THIS TYPE: 115, 215, 315 & 415

UNIT AREA: 785 SF

**Pinewood 30-A,
a Condominium
393 Holdings, LLC**

179 S. County Highway 393, Santa Rosa Beach, FL 32459

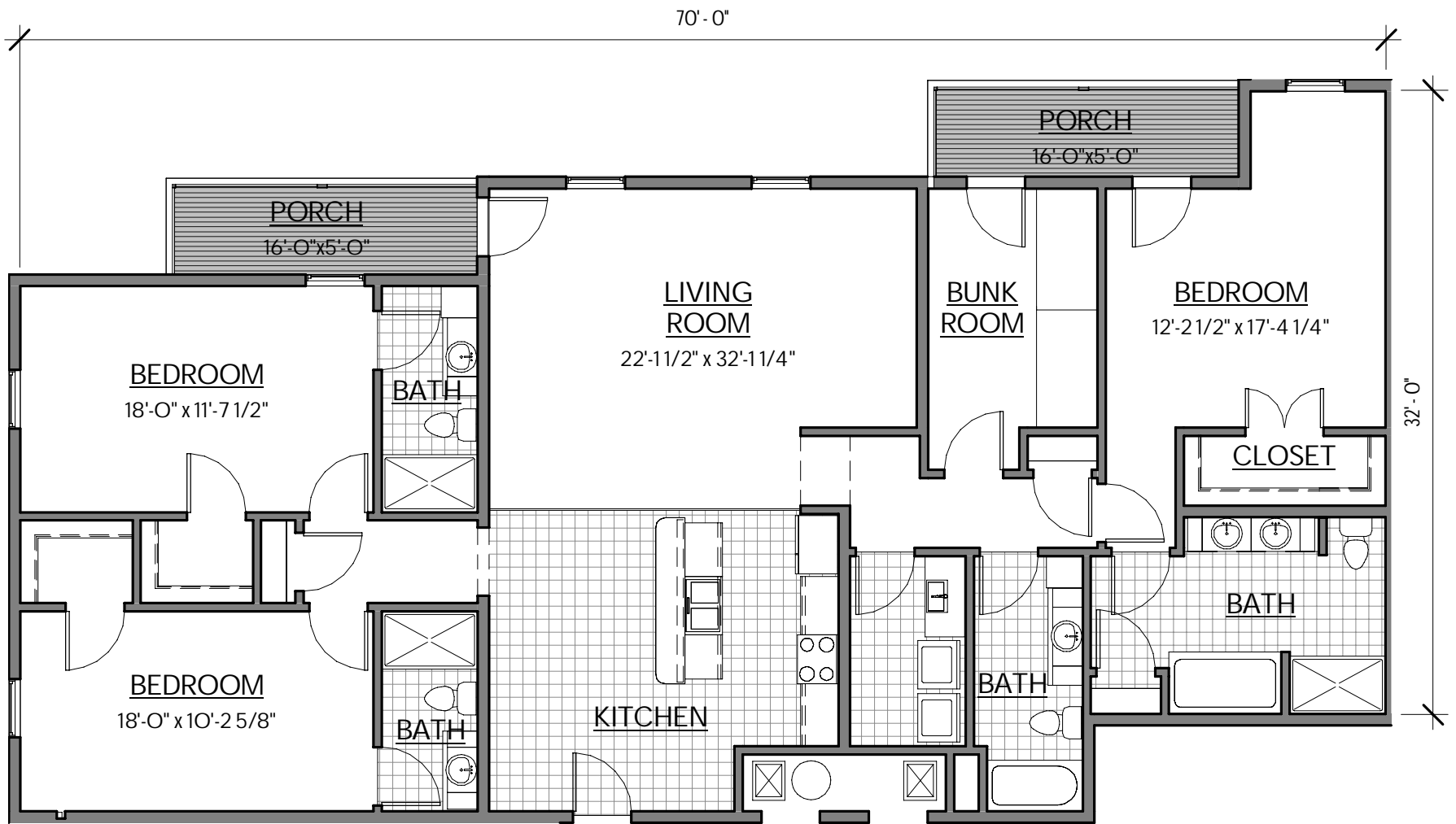
NOTE: ALL DIMENSIONS AND SQUARE FOOTAGE CALCULATIONS ARE MEASURED FROM THE STUD FACE OF THE INTERIOR WALLS. THE UNIT SQUARE FOOTAGE CALCULATIONS REPRESENT THE GROSS SQUARE FOOTAGE FOR THE UNIT AND INCLUDE ALL SPACE OCCUPIED BY INTERIOR WALLS, DRYWALL, PLUMBING FIXTURES, APPLIANCES, CABINETS, AND DOORS. ALL IMPROVEMENTS ARE PROPOSED.



4639 Gulf Starr Drive
Destin, Florida 32541
Tel: 850.837.4664
Fax: 850.654.2000

Anthony J. Vallee, Architect - FL: AR95108
Firm License No. 28625

A5.7



UNIT E-1

SCALE: 1/8" = 1'-0"



LIMITED COMMON AREA

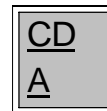
UNITS THIS TYPE: 143, 243, 343 & 443

UNIT AREA: 2,077.5 SF

**Pinewood 30-A,
a Condominium
393 Holdings, LLC**

179 S. County Highway 393, Santa Rosa Beach, FL 32459

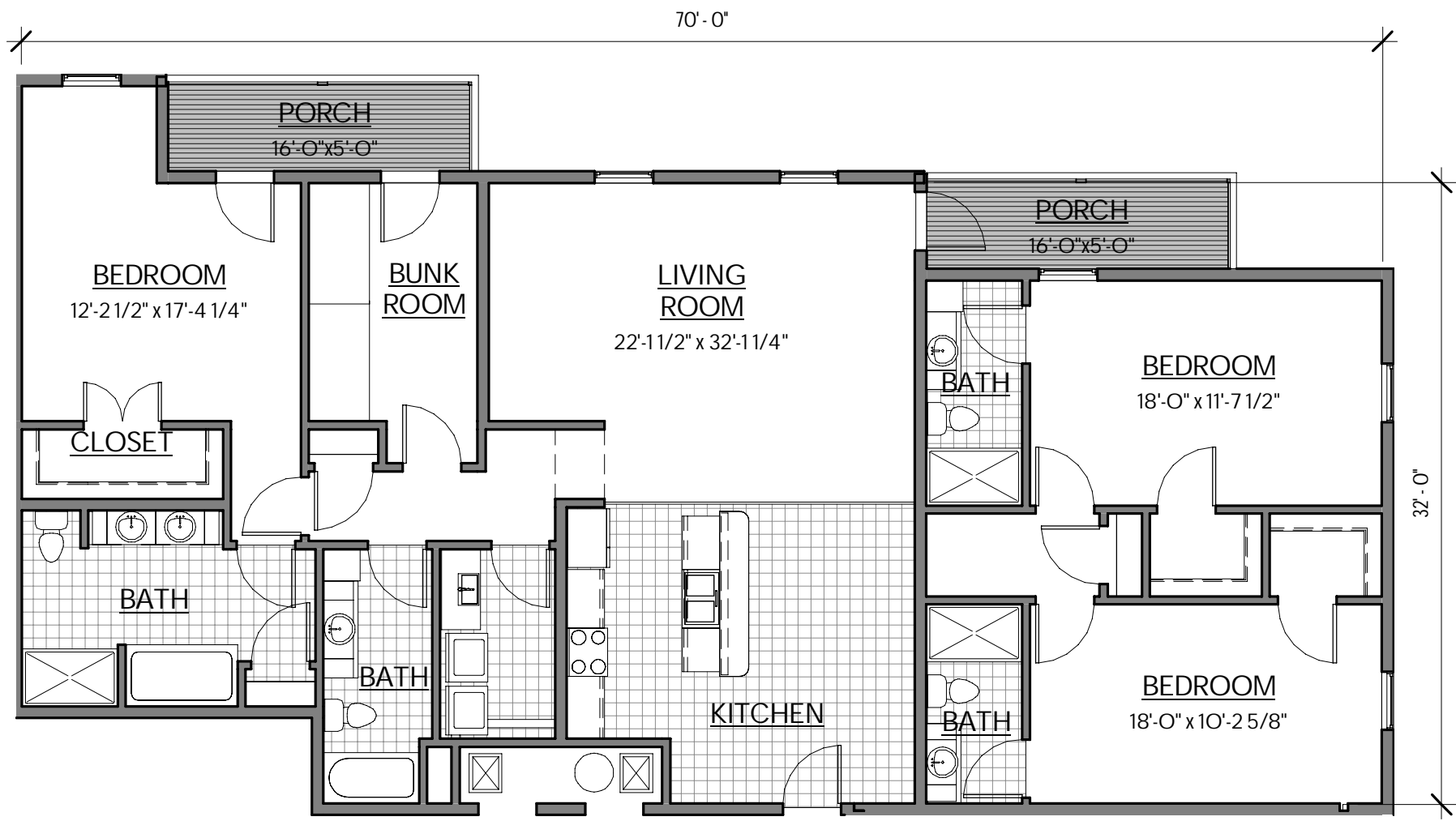
NOTE: ALL DIMENSIONS AND SQUARE FOOTAGE CALCULATIONS ARE MEASURED FROM THE STUD FACE OF THE INTERIOR WALLS. THE UNIT SQUARE FOOTAGE CALCULATIONS REPRESENT THE GROSS SQUARE FOOTAGE FOR THE UNIT AND INCLUDE ALL SPACE OCCUPIED BY INTERIOR WALLS, DRYWALL, PLUMBING FIXTURES, APPLIANCES, CABINETS, AND DOORS. ALL IMPROVEMENTS ARE PROPOSED.



4639 Gulf Starr Drive
Destin, Florida 32541
Tel: 850.837.4664
Fax: 850.654.2000

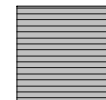
Anthony J. Vallee, Architect - FL: AR95108
Firm License No. 28625

A5.8



UNIT E-2

SCALE: 1/8" = 1'-0"



LIMITED COMMON AREA

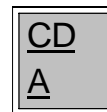
UNITS THIS TYPE: 144, 244, 344 & 444

UNIT AREA: 2,077.5 SF

Pinewood 30-A,
a Condominium
393 Holdings, LLC

179 S. County Highway 393, Santa Rosa Beach, FL 32459

NOTE: ALL DIMENSIONS AND SQUARE FOOTAGE CALCULATIONS ARE MEASURED FROM THE STUD FACE OF THE INTERIOR WALLS. THE UNIT SQUARE FOOTAGE CALCULATIONS REPRESENT THE GROSS SQUARE FOOTAGE FOR THE UNIT AND INCLUDE ALL SPACE OCCUPIED BY INTERIOR WALLS, DRYWALL, PLUMBING FIXTURES, APPLIANCES, CABINETS, AND DOORS. ALL IMPROVEMENTS ARE PROPOSED.



4639 Gulf Starr Drive
Destin, Florida 32541
Tel: 850.837.4664
Fax: 850.654.2000

Anthony J. Vallee, Architect - FL: AR95108
Firm License No. 28625

A5.9



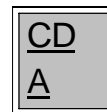
FRONT ELEVATION

SCALE: 1/16" = 1'-0"

**Pinewood 30-A,
a Condominium**
393 Holdings, LLC

179 S. County Highway 393, Santa Rosa Beach, FL 32459

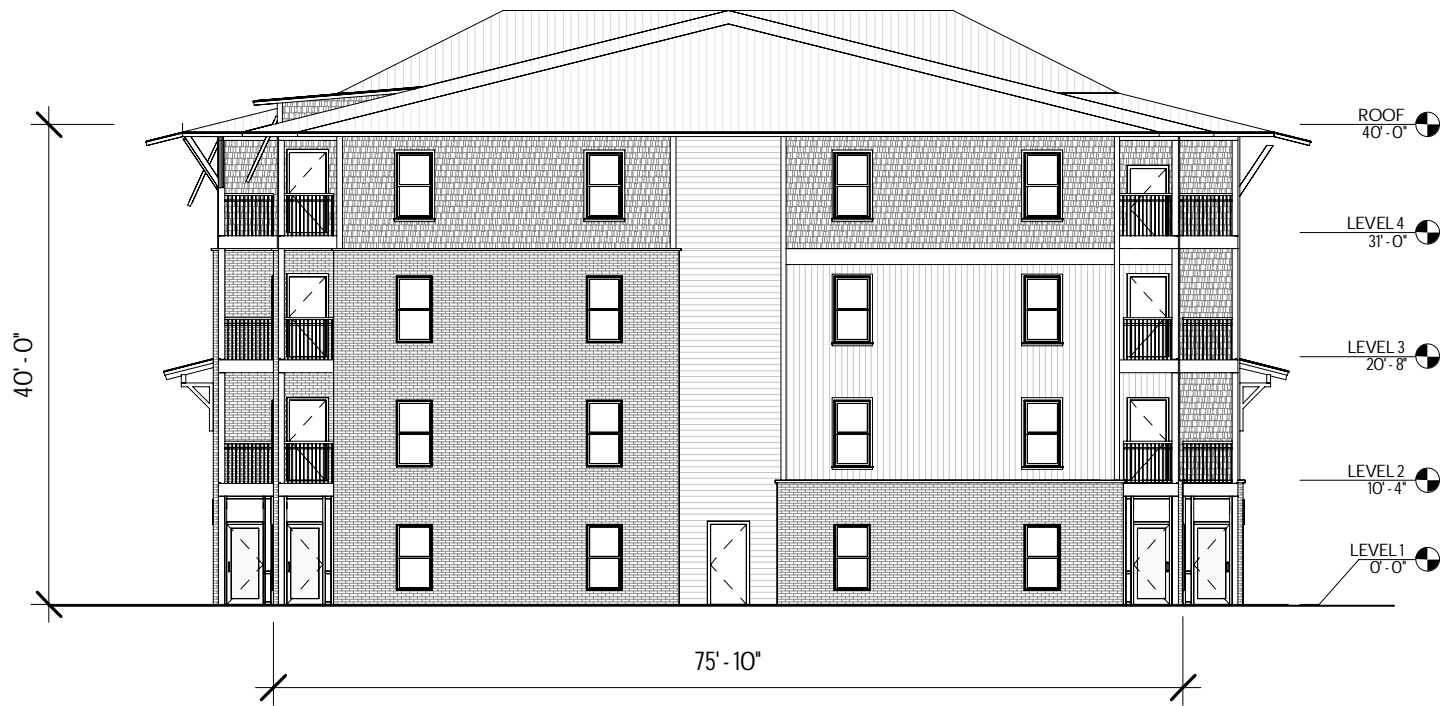
NOTE: ALL DIMENSIONS AND SQUARE FOOTAGE CALCULATIONS ARE MEASURED FROM THE STUD FACE OF THE INTERIOR WALLS. THE UNIT SQUARE FOOTAGE CALCULATIONS REPRESENT THE GROSS SQUARE FOOTAGE FOR THE UNIT AND INCLUDE ALL SPACE OCCUPIED BY INTERIOR WALLS, DRYWALL, PLUMBING FIXTURES, APPLIANCES, CABINETS, AND DOORS. ALL IMPROVEMENTS ARE PROPOSED.



4639 Gulf Starr Drive
Destin, Florida 32541
Tel: 850.837.4664
Fax: 850.654.2000

Anthony J. Vallee, Architect - FL: AR95108
Firm License No. 28625

A6.0



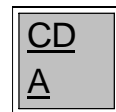
SIDE ELEVATION

SCALE: 1/16" = 1'-0"

**Pinewood 30-A,
a Condominium
393 Holdings, LLC**

179 S. County Highway 393, Santa Rosa Beach, FL 32459

NOTE: ALL DIMENSIONS AND SQUARE FOOTAGE CALCULATIONS ARE MEASURED FROM THE STUD FACE OF THE INTERIOR WALLS. THE UNIT SQUARE FOOTAGE CALCULATIONS REPRESENT THE GROSS SQUARE FOOTAGE FOR THE UNIT AND INCLUDE ALL SPACE OCCUPIED BY INTERIOR WALLS, DRYWALL, PLUMBING FIXTURES, APPLIANCES, CABINETS, AND DOORS. ALL IMPROVEMENTS ARE PROPOSED.



Anthony J. Vallee, Architect - FL: AR95108
Firm License No. 28625

4639 Gulf Starr Drive
Destin, Florida 32541
Tel: 850.837.4664
Fax: 850.654.2000

A6.1



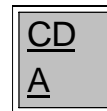
REAR ELEVATION

SCALE: 1/16" = 1'-0"

**Pinewood 30-A,
a Condominium
393 Holdings, LLC**

179 S. County Highway 393, Santa Rosa Beach, FL 32459

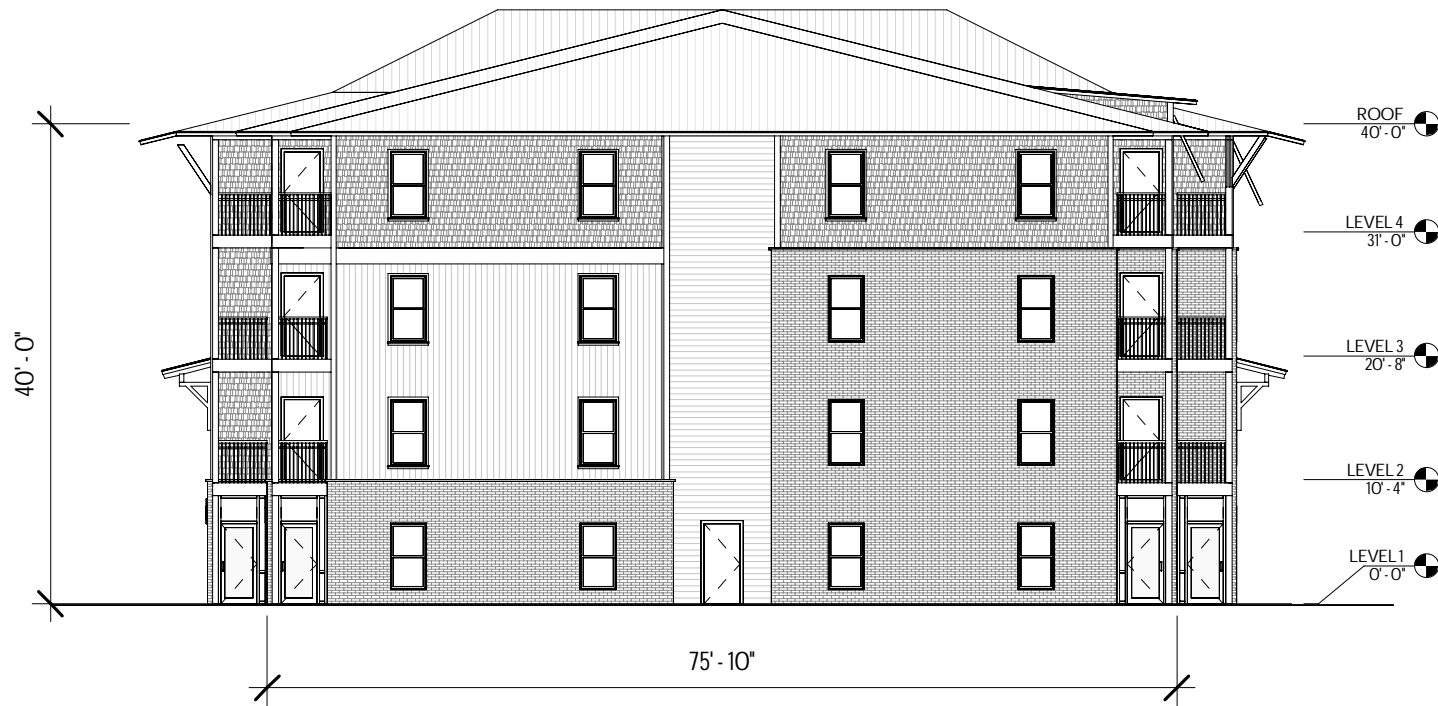
NOTE: ALL DIMENSIONS AND SQUARE FOOTAGE CALCULATIONS ARE MEASURED FROM THE STUD FACE OF THE INTERIOR WALLS. THE UNIT SQUARE FOOTAGE CALCULATIONS REPRESENT THE GROSS SQUARE FOOTAGE FOR THE UNIT AND INCLUDE ALL SPACE OCCUPIED BY INTERIOR WALLS, DRYWALL, PLUMBING FIXTURES, APPLIANCES, CABINETS, AND DOORS. ALL IMPROVEMENTS ARE PROPOSED.



4639 Gulf Starr Drive
Destin, Florida 32541
Tel: 850.837.4664
Fax: 850.654.2000

Anthony J. Vallee, Architect - FL: AR95108
Firm License No. 28625

A6.2



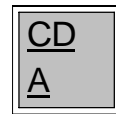
SIDE ELEVATION

SCALE: 1/16" = 1'-0"

**Pinewood 30-A,
a Condominium
393 Holdings, LLC**

179 S. County Highway 393, Santa Rosa Beach, FL 32459

NOTE: ALL DIMENSIONS AND SQUARE FOOTAGE CALCULATIONS ARE MEASURED FROM THE STUD FACE OF THE INTERIOR WALLS. THE UNIT SQUARE FOOTAGE CALCULATIONS REPRESENT THE GROSS SQUARE FOOTAGE FOR THE UNIT AND INCLUDE ALL SPACE OCCUPIED BY INTERIOR WALLS, DRYWALL, PLUMBING FIXTURES, APPLIANCES, CABINETS, AND DOORS. ALL IMPROVEMENTS ARE PROPOSED.



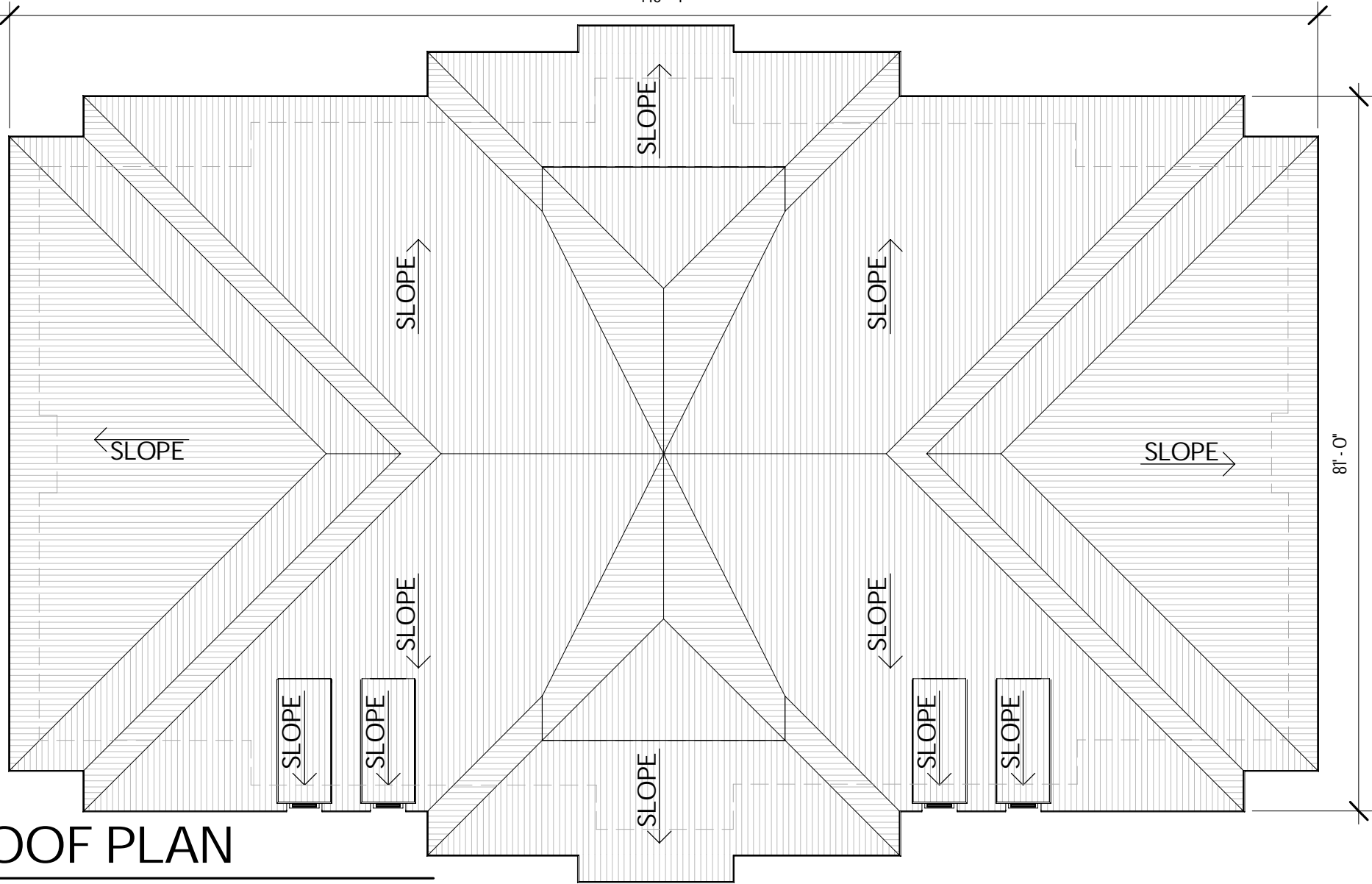
Anthony J. Vallee, Architect - FL: AR95108
Firm License No. 28625

4639 Gulf Starr Drive
Destin, Florida 32541
Tel: 850.837.4664
Fax: 850.654.2000

A6.3

148' - 4"

81' - 0"



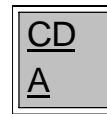
ROOF PLAN

SCALE: 1/16" = 1'-0"

Pinewood 30-A,
a Condominium
393 Holdings, LLC

179 S. County Highway 393, Santa Rosa Beach, FL 32459

NOTE: ALL DIMENSIONS AND SQUARE FOOTAGE CALCULATIONS ARE MEASURED FROM THE STUD FACE OF THE INTERIOR WALLS. THE UNIT SQUARE FOOTAGE CALCULATIONS REPRESENT THE GROSS SQUARE FOOTAGE FOR THE UNIT AND INCLUDE ALL SPACE OCCUPIED BY INTERIOR WALLS, DRYWALL, PLUMBING FIXTURES, APPLIANCES, CABINETS, AND DOORS. ALL IMPROVEMENTS ARE PROPOSED.



4639 Gulf Starr Drive
Destin, Florida 32541
Tel: 850.837.4664
Fax: 850.654.2000

Anthony J. Vallee, Architect - FL: AR95108
Firm License No. 28625

A7.0