

For sublease

620 McIntyre Road | McKinney, TX 75071
±25,000 SF of dead storage space available



JLL

Kodie Comby
Senior Associate
kodie.comby@jll.com
+1 214 438 6192

Graham Cash
Associate
graham.cash@jll.com
+1 214 396 5464

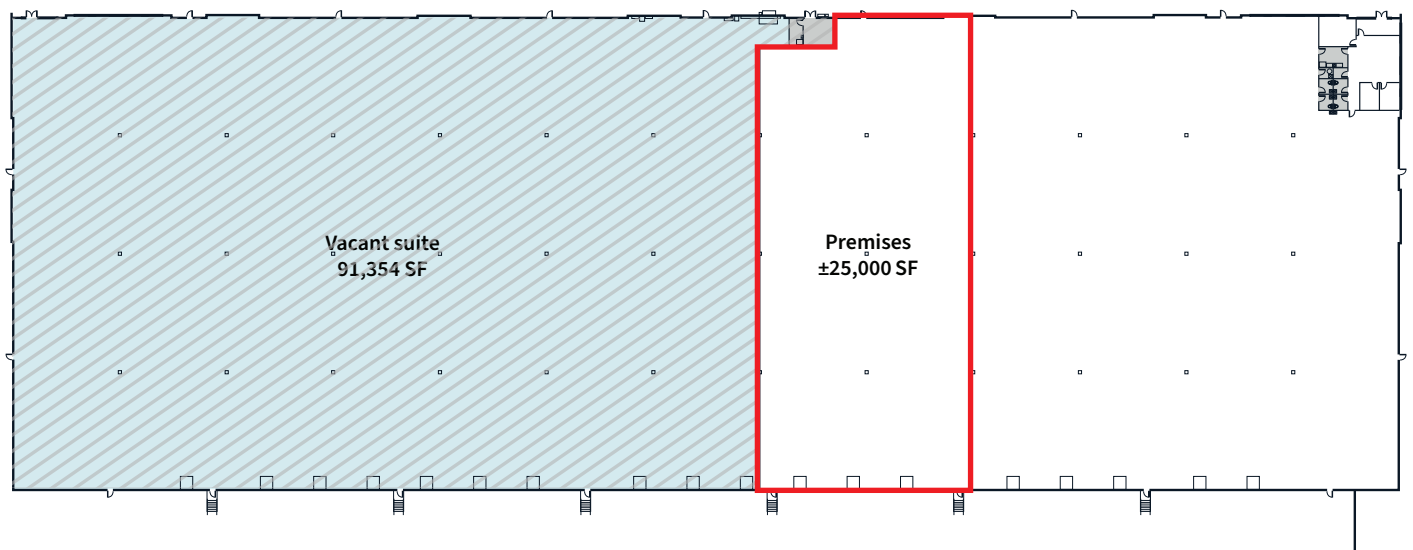
Randy Touchstone
Managing Director
randy.touchstone@jll.com
+1 214 438 1533

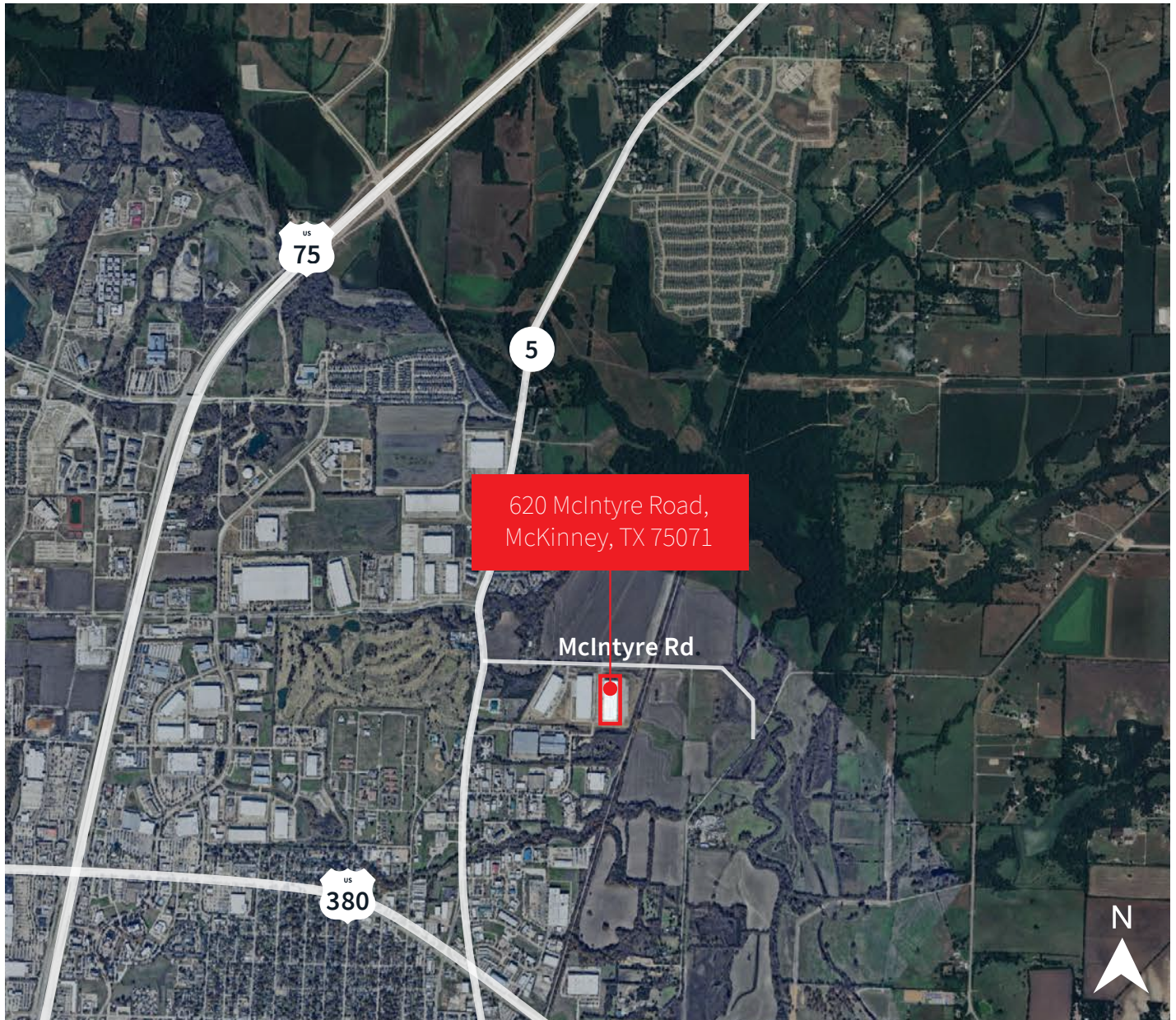
Property description

- Flexible dead storage layouts available
- 32' clear height
- 6 dock doors with 40LB levelers
- Car and trailer parking available
- Flexible term
- Available now
- ESFR Sprinkler system



Premises outline





JLL

Kodie Comby

Senior Associate

kodie.comby@jll.com

+1 214 438 6192

Graham Cash

Associate

graham.cash@jll.com

+1 214 396 5464

Randy Touchstone

Managing Director

randy.touchstone@jll.com

+1 214 438 1533

Although information has been obtained from sources deemed reliable, JLL does not make any guarantees, warranties or representations, express or implied, as to the completeness or accuracy as to the information contained herein. Any projections, opinions, assumptions or estimates used are for example only. There may be differences between projected and actual results, and those differences may be material. JLL does not accept any liability for any loss or damage suffered by any party resulting from reliance on this information. If the recipient of this information has signed a confidentiality agreement with JLL regarding this matter, this information is subject to the terms of that agreement. ©2024 Jones Lang LaSalle Brokerage, Inc. All rights reserved.