

175

CHRYSTIE STREET

BETWEEN RIVINGTON & DELANCEY STREETS

WHERE NOLITA, LOWER EAST SIDE,
AND EAST VILLAGE CONVERGE



SIZE: Ground Floor - 1,721 SF
Selling Lower Level - 2,294 SF
Total - 4,015 SF

FRONTAGE: 25'

CEILING HEIGHTS: Ground Floor - 11'
Selling Lower Level - 20'

POSSESSION: Immediate

HIGHLIGHTS:

- Located at the crossroads of Nolita, Lower East Side, and East Village
- At the base of a brand new, luxury condo building
- Kitchen exhaust opening in place
- Selling lower level with 20 foot ceilings and skylights
- Dedicated elevator from the ground to the selling lower level
- Ground level is open to below
- Two ADA restrooms in place
- Most uses considered-ideal for retail, restaurants, fitness, health, wellness, galleries, and many more

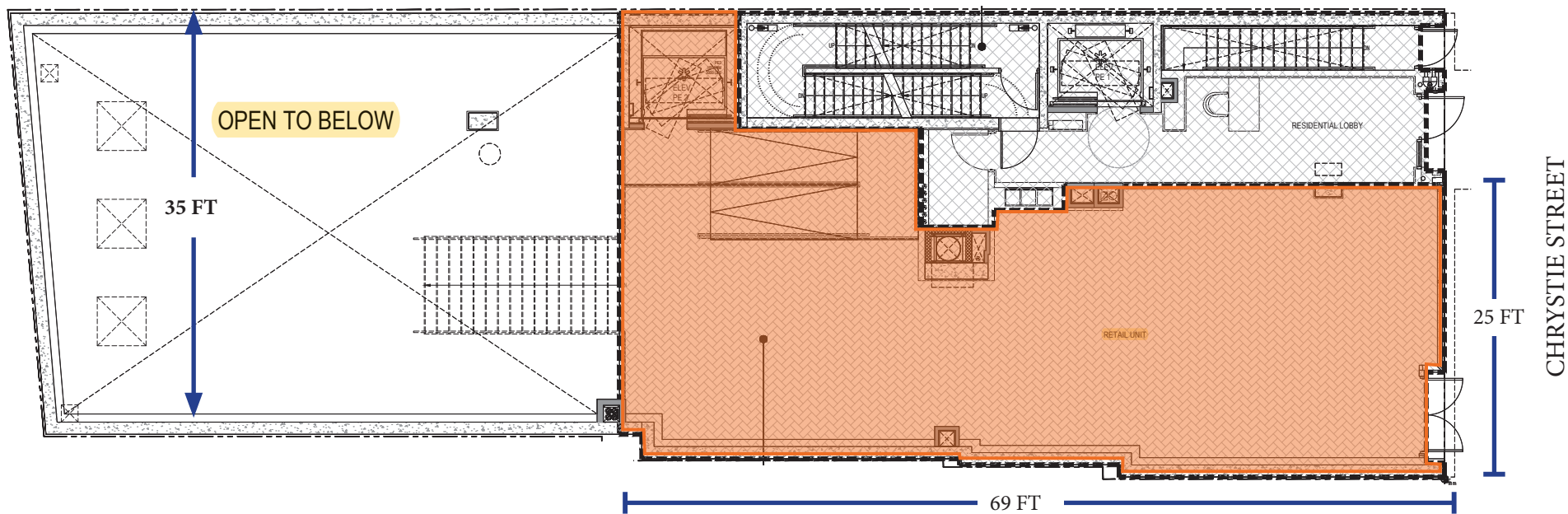


PROPERTY IMAGES:
GROUND FLOOR

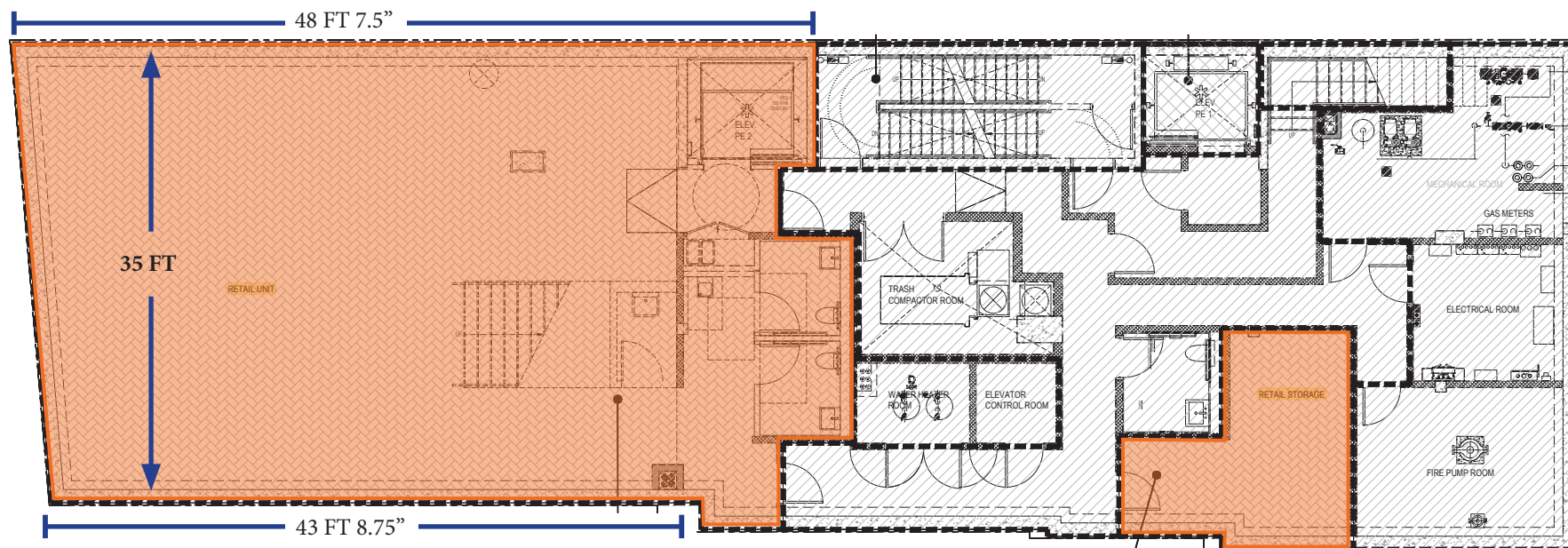
SELLING LOWER LEVEL



GROUND FLOOR - 1,721 SF



SELLING LOWER LEVEL - 2,294 SF



175

CHRYSTIE STREET

BETWEEN RIVINGTON & DELANCEY STREETS

FOR MORE INFORMATION,
PLEASE CONTACT:

ZACH NATHAN

240.731.8333 | ZNathan@ksrny.com

ELI YADID

917.770.9173 | EYadid@ksrny.com

NORMA ASHKENAZI

732.492.3566 | NAshkenazi@ksrny.com



1385 Broadway, 22nd Floor | New York, NY 10018
212.417.9217

ksrny.com

All information supplied in this marketing presentation and/or flyer is from sources deemed reliable and is furnished subject to errors, omissions, modifications, removal of listings from sale/lease and to any listing condition. Any square footage, dimensions, floor plans and/or technical data set forth are approximations and are subject to further elaboration/confirmation.