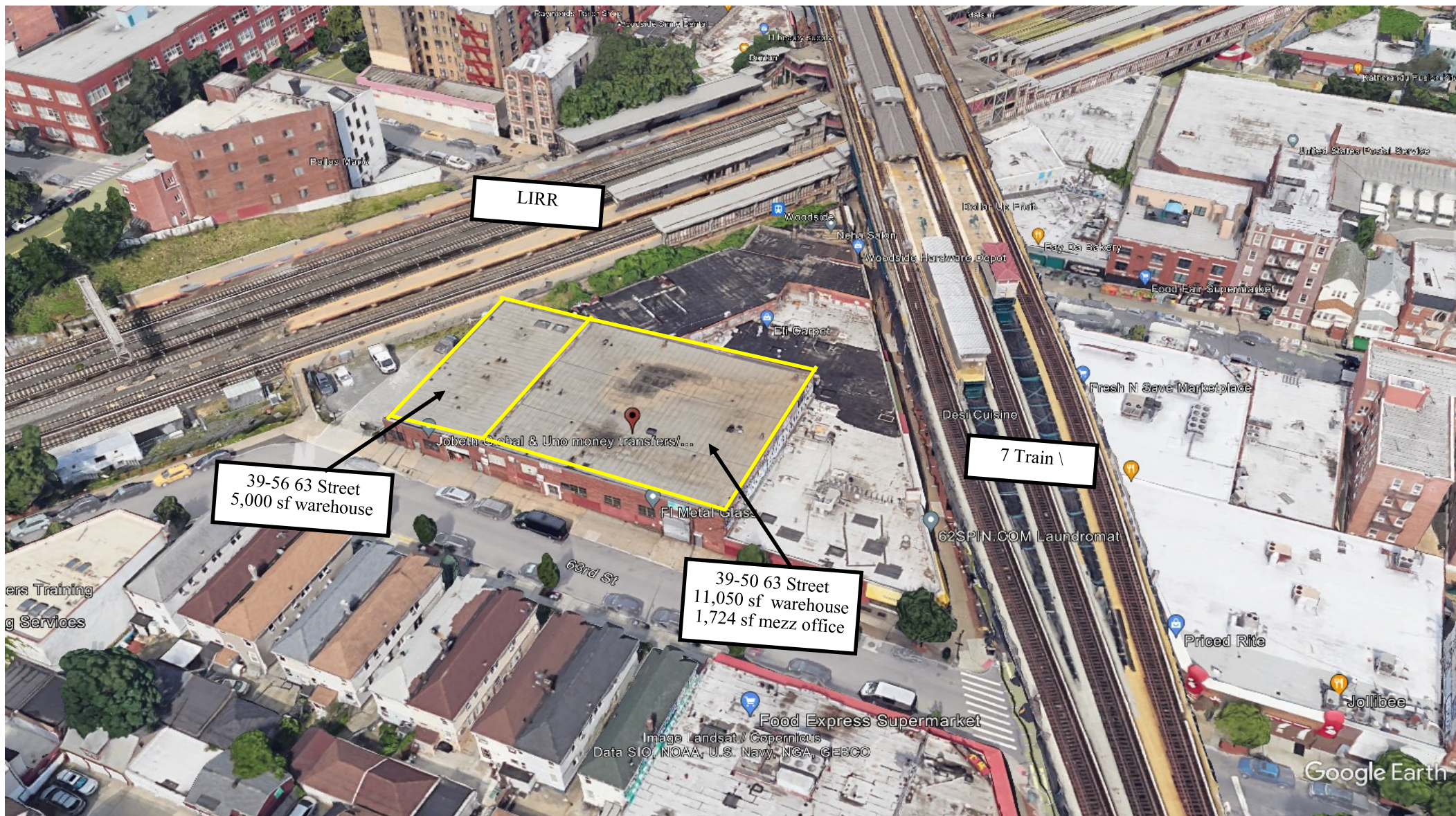


39-50 & 39-56 63 Street, Woodside (LIRR & 7 Train Adjacent)



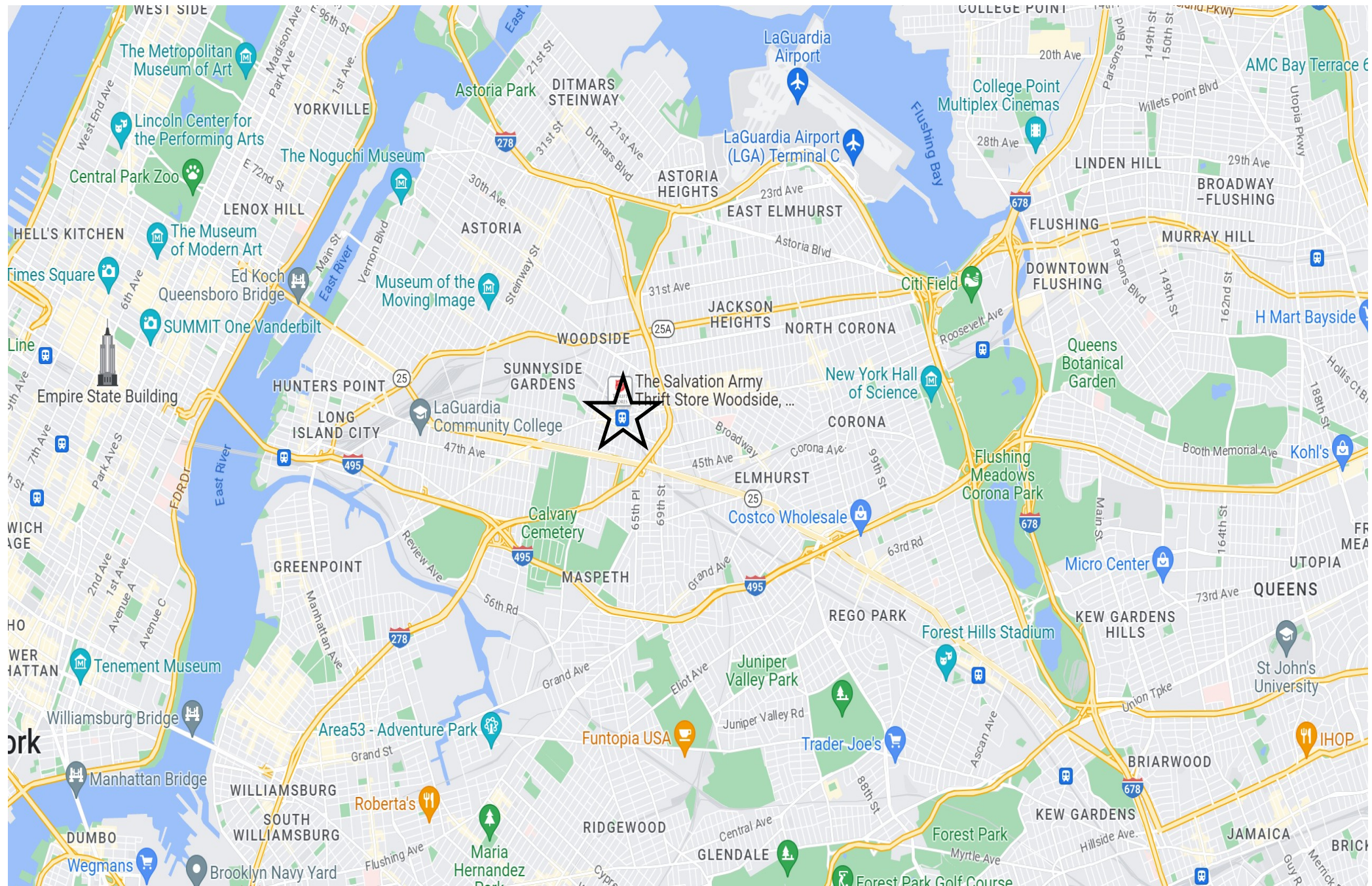
39-56 63 Street

- ◆ 5,000 sf
- ◆ 50X100
- ◆ 13 Foot Ceiling Heights
- ◆ Small Office
- ◆ Roll up door for loading
- ◆ 800+ Amps

39-50 63 Street

- ◆ 11,050 sf of warehouse
- ◆ 35 x 20 column grid
- ◆ 19 Foot Ceiling Heights
- ◆ 1,724 sf office space
- ◆ 1 Roll up door for loading
- ◆ 1000+ Amps
- ◆ Separate office en-

Easy Access to... Manhattan - Queens - Brooklyn - Long Island



Adjacent buldings—same block access to LIRR & 7 Train



Stephen Lysohir
718.880.3980
slysohir@ej-stevens.com

39-50 63 Street, Woodside, NY—5k SF



39-56 63 Street, Woodside, NY—12,700 sf (including office space)

