

2811 E. ANA STREET

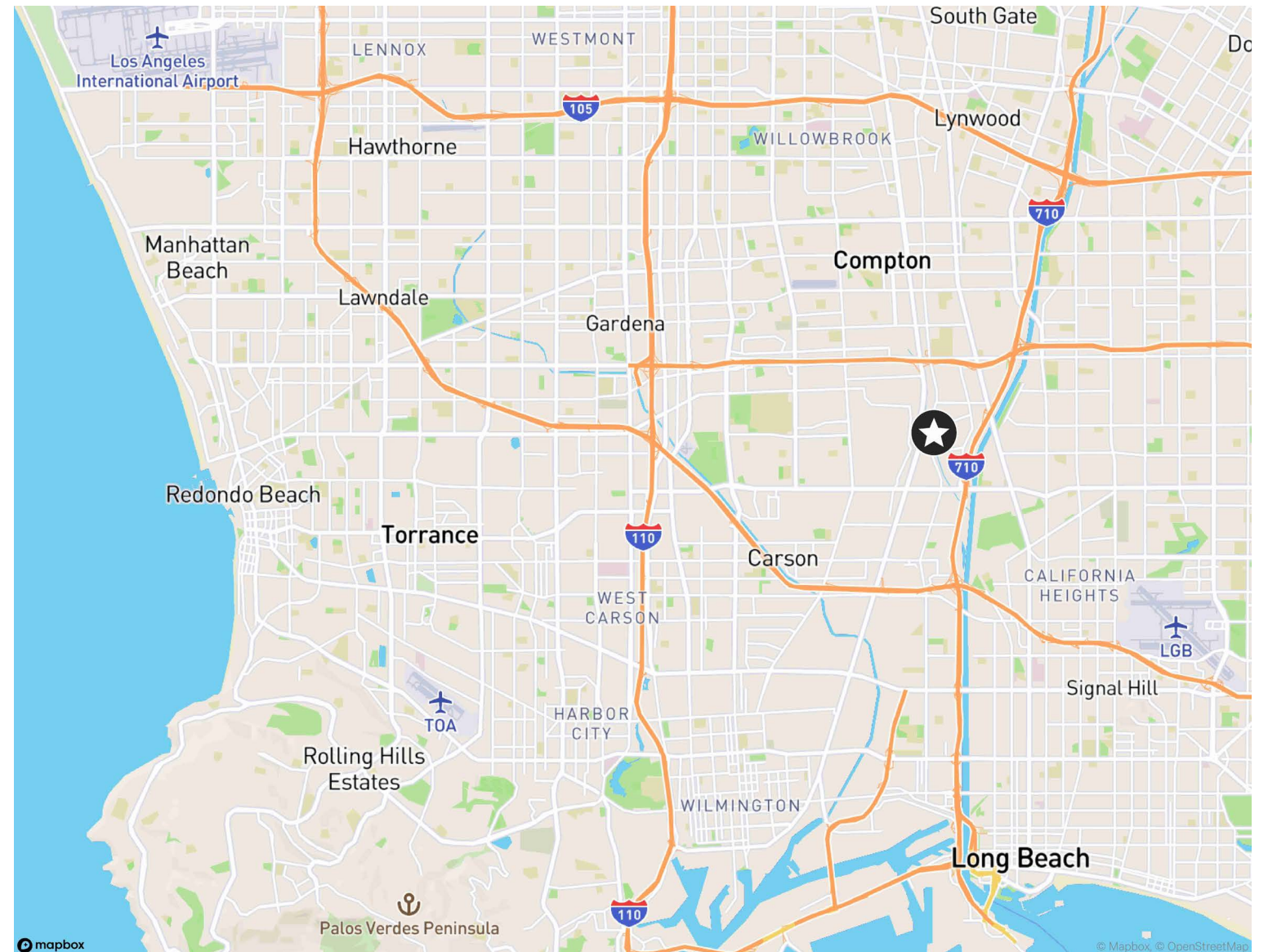
Rancho Dominguez, CA 90221

25,087 SF FREESTANDING BUILDING ON 45,302 SF OF LAND



Property Features

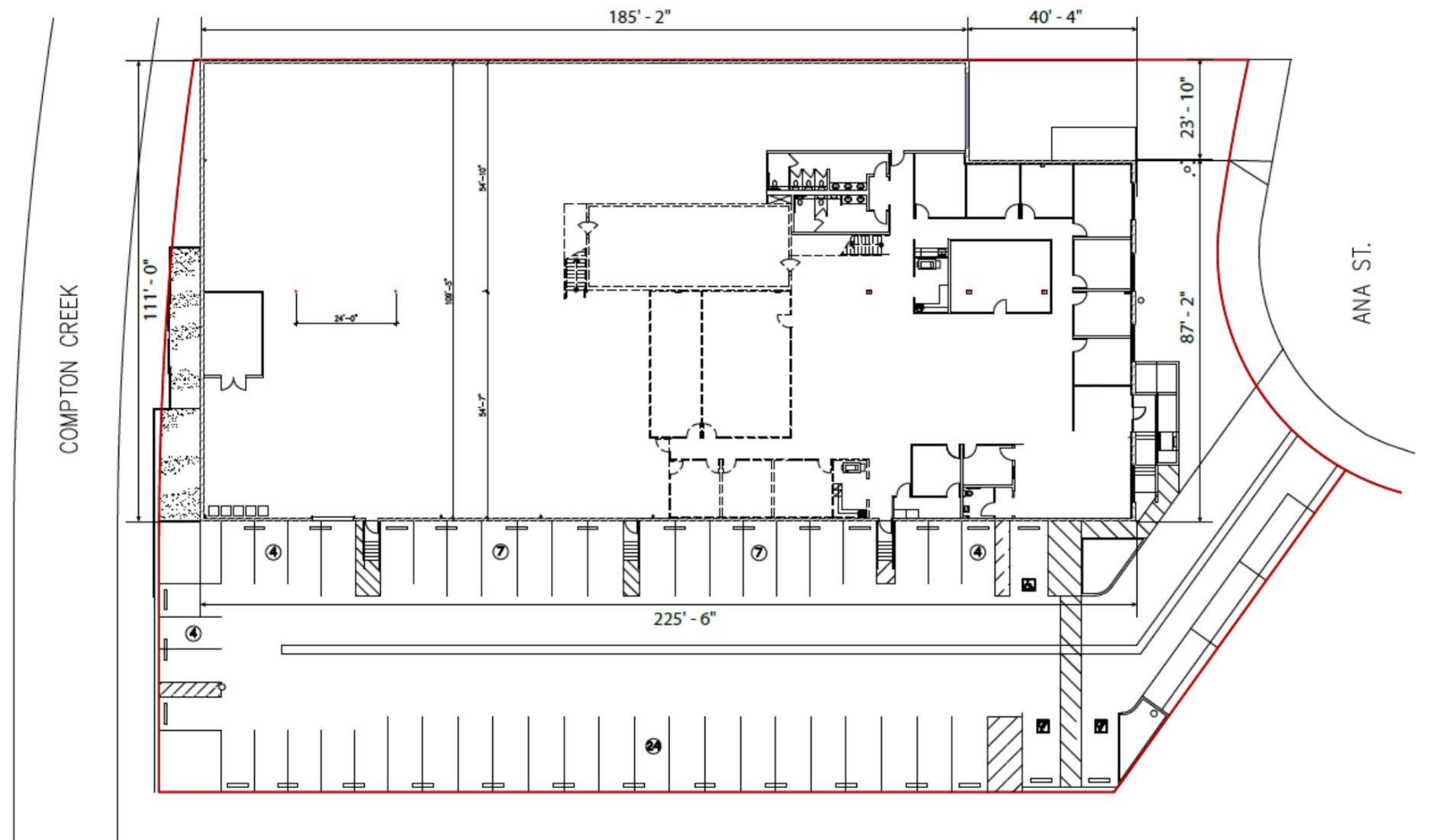
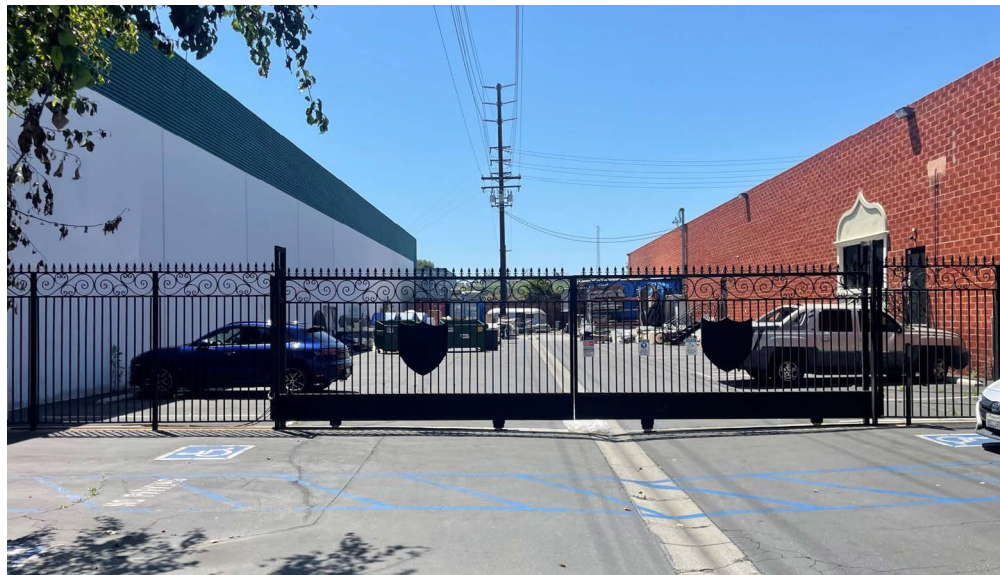
- + Sale Price: \$6,898,925 (\$275 PLSF)
- + Lease Rate: \$32,613 per month (\$1.30 PLSF) Gross
- + Free Standing Warehouse/Manufacturing Building
- + Well Appointed Creative Offices (Can Modify to Suit)
- + Large Private Secured Fenced Yard
- + 3 Dock Positions
- + 600 Amps, 480/277 Volts, 3 Phase, 4 Wire
- + Located on a Cul-De-Sac



Contact Us

Brian Held
Senior Vice President
310 363 4825
Brian.held@cbre.com
Lic. 01100518

Robert Spratlin
Associate
404 558 8572
Robert.Spratlin@cbre.com
Lic. 02236093

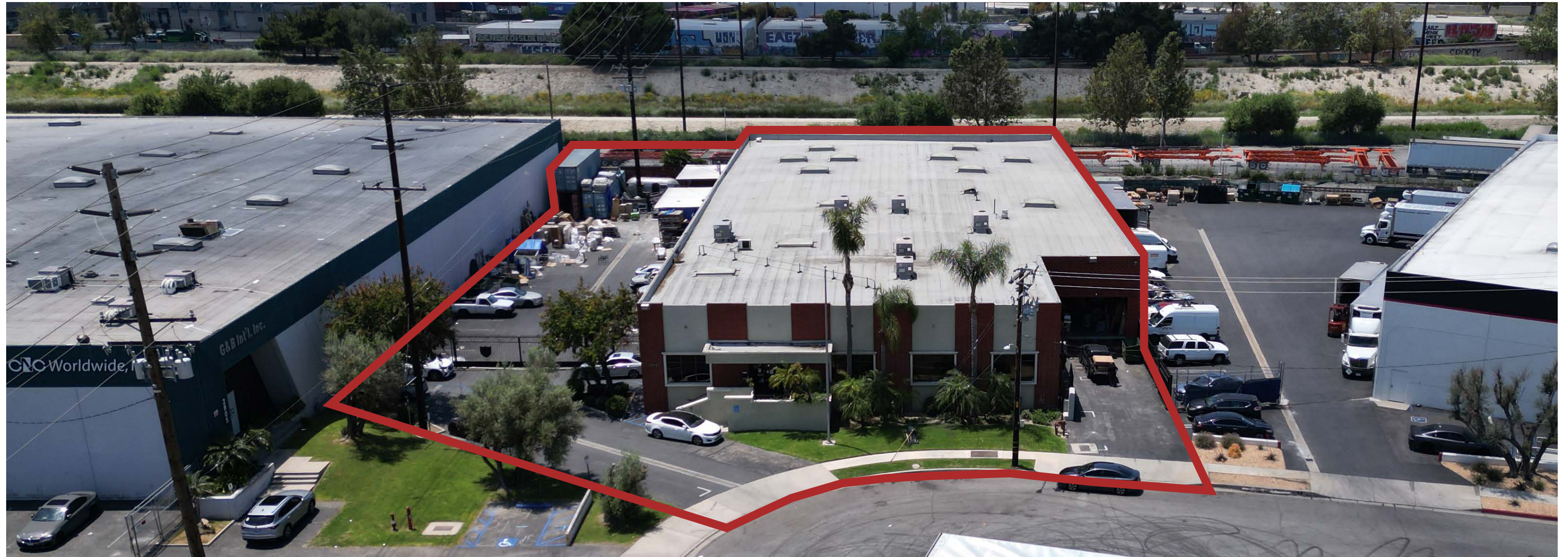


*Owner can modify offices to suit

Contact Us

Brian Held
Senior Vice President
310 363 4825
Brian.held@cbre.com
Lic. 01100518

Robert Spratlin
Associate
404 558 8572
Robert.Spratlin@cbre.com
Lic. 02236093



Contact Us

Brian Held
Senior Vice President
310 363 4825
Brian.held@cbre.com
Lic. 01100518

Robert Spratlin
Associate
404 558 8572
Robert.Spratlin@cbre.com
Lic. 02236093

© 2024 CBRE, Inc. All rights reserved. This information has been obtained from sources believed reliable, but has not been verified for accuracy or completeness. You should conduct a careful, independent investigation of the property and verify all information. Any reliance on this information is solely at your own risk. CBRE and the CBRE logo are service marks of CBRE, Inc. All other marks displayed on this document are the property of their respective owners, and the use of such logos does not imply any affiliation with or endorsement of CBRE. Photos herein are the property of their respective owners. Use of these images without the express written consent of the owner is prohibited.